

Panola College



M. P. Baker Library, Photo by Teresa Beasley

Fact Book 2009 - 2010

Table of Contents

Acknowledgments.....	3
About Panola College	4
Statement of Vision.....	5
Mission Statement.....	5
Strategic Planning Objectives 2010 Linked to Institutional Goals 2010 - 2015	5
Administrative Organizational Chart.....	9
Academic and Career / Technical Instruction Organizational Chart	10
Student Services Department Organizational Chart	11
Fiscal Services Organizational Chart.....	12
Harrison County: Geography and Population Statistics.....	13
Marion County: Geography and Population Statistics.....	15
Panola County: Geography and Population Statistics.....	17
Shelby County: Geography and Population Statistics	19
Panola College District Demographics	21
Five Year Fall / Spring Enrollment Report.....	23
Five Year Credit Enrollment By Full-time/Part-time Status Fall Semesters	24
Five Year Fall Credit Enrollment By Tuition Status and Geographical Distribution.....	25
Five Year Trend of Credit Students By Ethnicity Fall Semesters	26
Five Year Trend of Credit Students by Gender Fall Semesters	27
Fall 2009 Credit Students Ethnic/Gender Breakdown.....	28
Five Year Fall Enrollment By Level.....	29
Five Year Trend of Fall Student Headcount Breakdown By Campus	30
Fall Distance Learning Duplicated Headcount	31
Definition of Distance Learning Modes of Delivery	32
Five Year Trend for Fall Distance Learning Enrollment Unduplicated Head Count	33
Five Year Trend Fall Student Distribution	34
Seven Year Trend of Fall Contact Hours By Program Area.....	35
Fall Contact Hours By Campus: Academic and Career / Technical.....	36
Continuing Education: Five Year Trend of Fall Contact Hours by Campus	37
Five Year Trend Fall Credit	38
Academic / Career and Technical Full-Time Equivalent (FTE).....	38
Panola College: Programs Offered 2009-2010	39
Fall 2009 Enrollment by Declared Major Field of Study	40
Five Year Trend Total Number of Degrees and Certificates Awarded	42
Percent of First Time, Full-time College Ethnic Grouped Students Who Entered in Fall 2006 (Cohort 2006) and Completed or Transferred-out by Fall 2009	43
Number of Full-time Faculty By Degree and Gender (Fall 2009).....	44
Full-time Employees By Ethnicity and Gender (Fall 2009)	45
Full-time Employees By Activity and Gender (Fall 2009).....	46
Revenues, Expenses, and Changes in Net Assets September 1, 2008 – August 31, 2009..	47
Five Year Trend Need-Based Aid Received by Students	48
Athletic Scholarships (2009 - 2010)	48
Academic/Performance Scholarships (2009 - 2010).....	50
Summary of Financial Aid/Scholarships (2009 - 2010)	51
Five Year Trend Number of Financial Aid Applicants and Recipients	52
Library Budget: 2005-2010.....	53
Library Materials: 2005 - 2009	54
Library Services: 2005 - 2009.....	55



Photo by Teresa Beasley

Introduction

Acknowledgments

This edition of the Panola College Fact Book reflects the diversity of the institution and provides a convenient and authoritative source of information about the college. The Offices of the President, the Vice President of Instruction, Fiscal Affairs, Financial Aid, the Registrar, the Director of Administrative Services, the Executive Director of Institutional Advancement, and the M. P. Baker Library assisted in the compilation of the data in the book.

Chris Blair

Chris Blair

Director of Institutional Research / Math Instructor
Panola College
1109 West Panola
Carthage, TX 75633
903-693-2075



About Panola College

Panola College is a comprehensive public community college serving the citizens of Harrison, Marion, Panola, and Shelby counties. Founded in 1947, Panola College has a rich tradition of helping students achieve their academic and personal goals.

Enrollment at the College has grown from fewer than 100 students at the first registration in January of 1948 to its highest enrollment of 2,111 in the fall of 2009. The College provides many services that enrich the lives of individuals in the region by offering a wide range of educational and training opportunities to citizens of all ages. Students can choose from a variety of technical programs that provide quick employment and career enhancement opportunities, or they can pursue a two-year associate degree and academic courses for transfer to a four-year university.

Panola College offers courses through its main campus in Carthage and at centers in Marshall and Center, Texas. Panola College is also a leader in offering distance learning courses via the Internet, and since 2003 has been listed by the Center for Digital Education as one of the top 10 tech-savvy community colleges in the nation. This year Panola College was declared “Number One” among small colleges with less than 3,000 students in the fifth national Digital Community Colleges Survey by the Center of Digital Education and *Converge* magazine. The Digital Community Colleges Survey identifies and spotlights colleges that provide high level technology ranging from online registration, distance learning, advisory services, to technology training for students and faculty.

Panola College provides numerous cultural events to the local community. Patrons of the arts can choose from a wide selection of plays, concerts, lectures, and art exhibits presented annually at the College. For those who prefer athletic competition, Panola College is home to the Panola Ponies and Fillies intercollegiate basketball, volleyball, baseball and rodeo teams.

An associate degree from Panola College is equivalent to the first two years of a four-year degree but at a fraction of the cost charged by state and private universities. Graduates transfer to a wide range of four-year institutions that include Texas A&M University, the University of Texas at Tyler, East Texas Baptist University, Stephen F. Austin State University, Louisiana State University and many others.

Van Patterson
Executive Director of Institutional Advancement

Statement of Vision

Panola College is committed to excellence in instructional programs, student services, service to the community, and leadership in economic development and cultural enrichment of the region.

Mission Statement

Panola College shapes its mission around the needs of the people within its service area. As a two-year public community institution, Panola College is dedicated to providing excellence in education for its constituents. The range of educational offerings, both electronic and face-to-face, includes university transfer programs, technical and workforce programs, developmental courses designed to increase academic proficiencies and continuing education to enrich lives and improve skills. Our aim is to help each student achieve his or her full potential and contribute to the further development of society.

Strategic Planning Objectives 2010 Linked to Institutional Goals 2010 - 2015

Institutional Goal 1: Provide excellence in teaching and to develop and revise curricula to meet the needs of the community.

- 1.1 Award excellence in teaching
- 1.2 Develop leadership opportunities for faculty
- 1.3 Survey business and industry to determine instructional needs
- 1.4 Review developmental studies program
- 1.5 Review and revise programs periodically
- 1.6 Review and revise syllabi every two years
- 1.7 Explore service learning projects and instruction
- 1.8 Continue to develop QEP to get it approved for implementation
- 1.9 Continue to emphasize assessment of student learning
- 1.10 Investigate Medical Lab Technician Program
- 1.11 Investigate Bio-Technology Program
- 1.12 Investigate OSHA Certificate Program
- 1.13 Investigate Arborist Certificate Program
- 1.14 Investigate name change of Petroleum Tech to Energy Tech

Institutional Goal 2: To maintain and refine support systems for enhancing student success.

- 2.1 Develop criteria and explore idea of Honors Award Program
- 2.2 Continue to refine first-year program
- 2.3 Expand tutoring process and evaluate
- 2.4 Review and expand student organizations and projects (field trips), community service partnerships
- 2.5 Develop opportunities for students/faculty/staff to interact
- 2.6 Provide transportation for fans to attend athletic away events
- 2.7 Increase employee participation in Panola College events
- 2.8 Target GED students for college enrollment (scholarship program)
- 2.9 Improve retention rate
- 2.10 Review TSI statement
- 2.11 Review and revise new student advising and orientation

- 2.12 Revise student handbook
- 2.13 Develop Master textbook list and send copy to Library
- 2.14 Provide work-study training and job postings
- 2.15 Investigate Federal Guaranteed Student Loans
- 2.16 Investigate setting up a clothes closet to be used for donations to students for interviews and recitals
- 2.17 Investigate Bookstore improvements and inventory (hours open/SGA survey)
- 2.18 Investigate used book exchange
- 2.19 Set up historical preservation committee

Institutional Goal 3: To provide appropriate facilities and a quality and productive work, study, living and learning experience.

- 3.1 Improve dorm Internet access
- 3.2 Improve wireless hotspots
- 3.3 Continue to provide new, technology-equipped classrooms
- 3.4 Formalize a wellness program and include off-campus centers; enhance services for virtual students
- 3.5 Continue campus beautification projects
- 3.6 Continue to review safety protocol
- 3.7 Reconsider smoking policy
- 3.8 Develop facilities maintenance schedule
- 3.9 Continue landscaping on campus
- 3.10 Investigate and plan for new residence hall
- 3.11 Investigate and plan for new fitness center gym
- 3.12 Investigate and plan for new student center
- 3.13 Investigate and plan to move Welding Center
- 3.14 Service Learning Project: Place tobacco signs on all buildings
- 3.15 Service Learning Project: Create tobacco designated areas
- 3.16 Service Learning Project: Develop policy on tobacco abuse

Institutional Goal 4: To maintain a strong commitment to excellence through professional development.

- 4.1 Continue to provide grant writing workshops on campus
- 4.2 Continue to provide leadership development for faculty/staff
- 4.3 Coordinate PC training to meet the college's diverse needs and write plan
- 4.4 Continue to establish partnerships for educational and professional development
- 4.5 Continue technology training through DL
- 4.6 Train Library staff to assist students in completing FASFA forms
- 4.7 Continue professional development (customer service) through Human Resources for support staff
- 4.8 Continue technical training for professional staff (new technology like Podcasting)
- 4.9 Offer Professional Development in writing and understanding press releases
- 4.10 Investigate using AVID for retention

Institutional Goal 5: To seek additional resources to support the College's mission.

- 5.1 Research and write a title grant
- 5.2 Conduct an annual campaign

- 5.3 Continue to raise funds through the Office of Institutional Advancement
- 5.4 Investigate Department of Labor grants
- 5.5 Investigate ABE Workforce Literacy options and partnerships
- 5.6 investigate subscribing to a grant repository and investigate partnering with SFA for subscription

Institutional Goal 6: To distribute resources in a manner that is productive, efficient and consistent with the College's mission.

- 6.1 Review the budgeting process; workshops will be mandatory
- 6.2 Continue to set up summer programs
- 6.3 Investigate and implement summer workshops as appropriate

Institutional Goal 7: To provide College systems and practices that provides effective support and ensures public accountability.

- 7.1 Expand use of imaging system
- 7.2 Expand use of electronic forms for both completion and submission
- 7.3 Develop new student evaluation systems
- 7.4 Explore possibility of using debit cards
- 7.5 Explore possibility of installing ATM machine
- 7.6 Expand instructors' use of WebCT training
- 7.7 Update servers and ensure adequate network and server efficiency

Institutional Goal 8: To support the College's commitment to expanded enrollment, access, equity and diversity.

- 8.1 Actively recruit people of diverse backgrounds
- 8.2 Expand enrollment and scholarship programs (creative use of scholarships)
- 8.3 Create and administer survey to examine scheduling of classes
- 8.4 Review recruitment practices
- 8.5 Explore possibility of Senior College
- 8.6 Send job announcements to minority colleges
- 8.7 Partner with outside agencies such as TWC, DARS, Head Start, Tri-County

Institutional Goal 9: To provide leadership in the cultural and economic development of the College's service area.

- 9.1 Expand economic development through partnerships based on training funds
- 9.2 Get listing of economic development board lists
- 9.3 Offer fine and performing arts programs outside Panola County
- 9.4 Provide exhibit space (in new library)
- 9.5 Continue to involve alumni and others in presenting programs to the college

Institutional Goal 10: To seek out and cultivate partnerships beneficial to Panola College.

- 10.1 Continue to develop and/or maintain relationships with ISDs and universities, government, and non-profit groups
- 10.2 Develop student health services through East Texas Medical Center
- 10.3 Continue partnerships with businesses for field training and financial support
- 10.4 Continue to develop distance learning course exchanges with other colleges

Panola College Board of Trustees

Mr. William Goolsby, Chair – 2010

Mr. Hal Palmer, Vice Chair – 2014

Mrs. Evelyn Sharp, Secretary – 2012

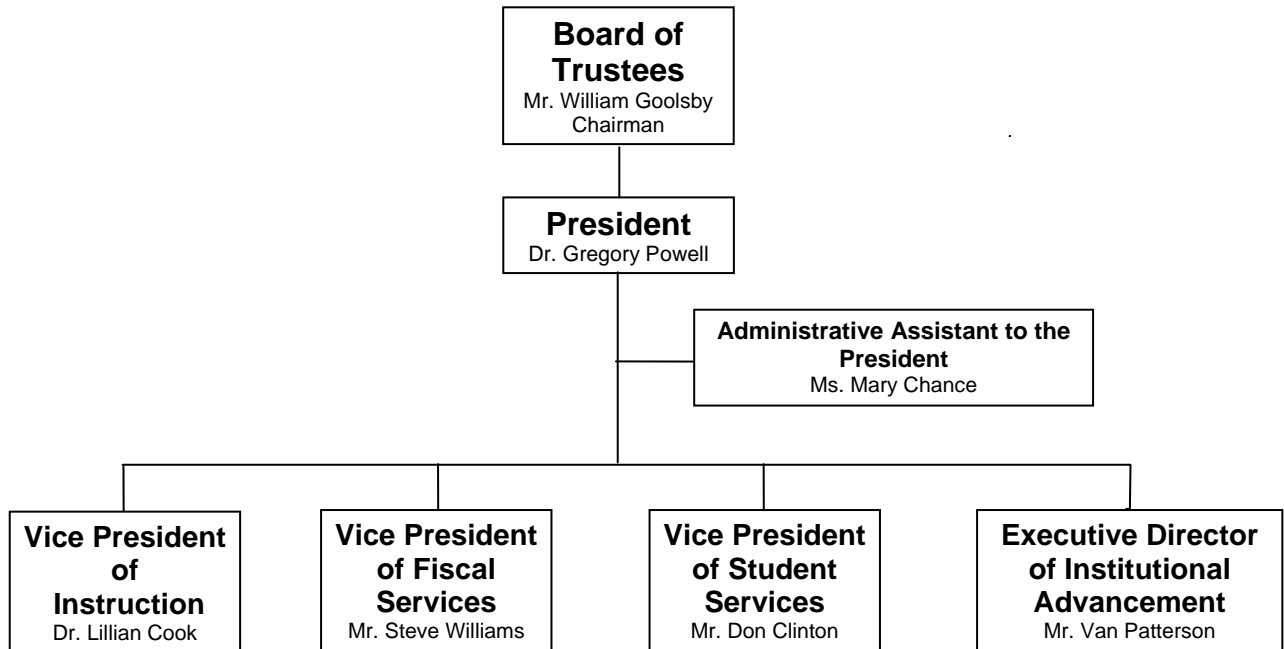
Mrs. Glendell Chadwick – 2014

Mr. Kevin Smith – 2010

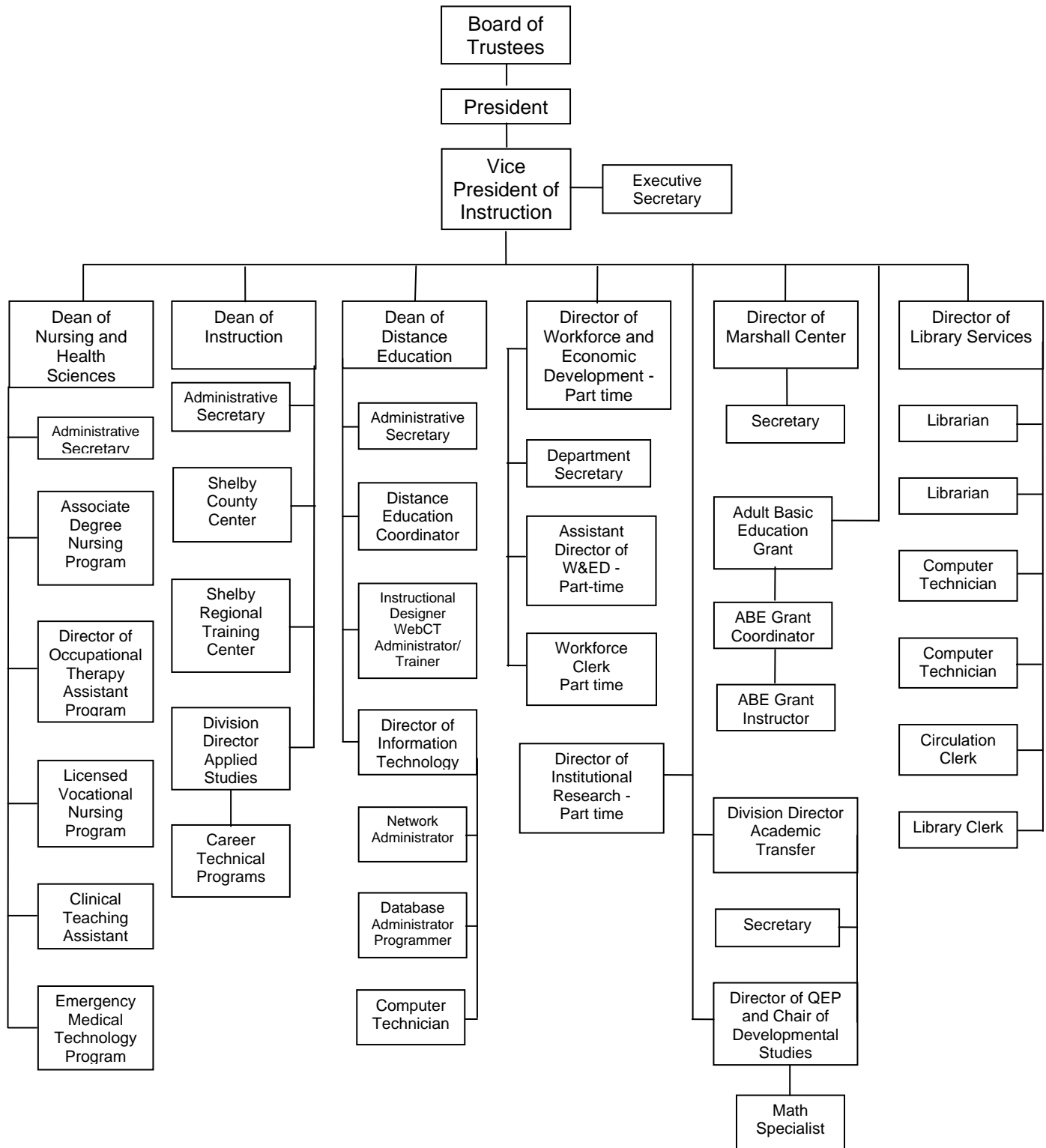
Mr. Bobby Phillips – 2010

Mr. Richard Thomas – 2012

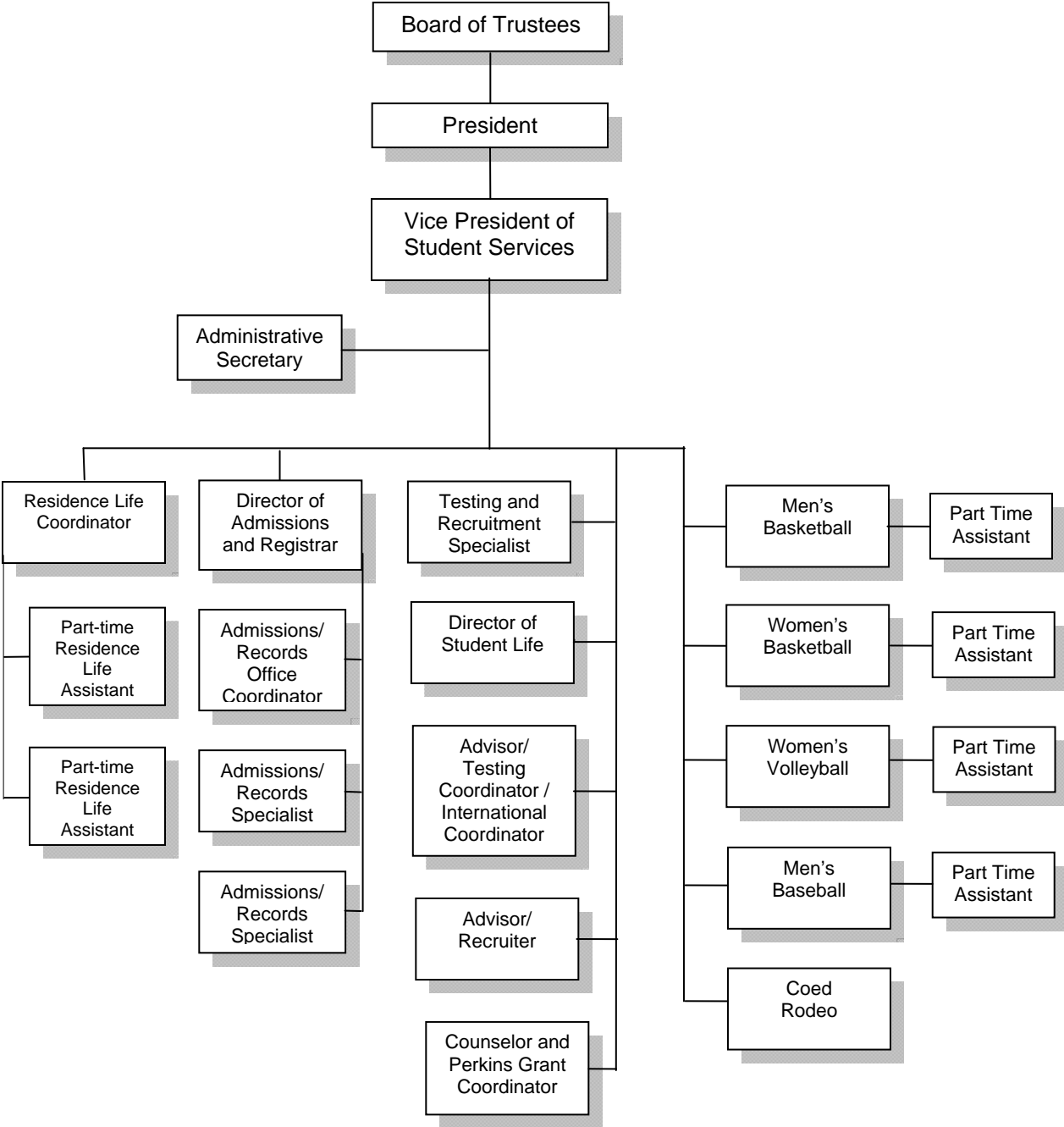
Administrative Organizational Chart



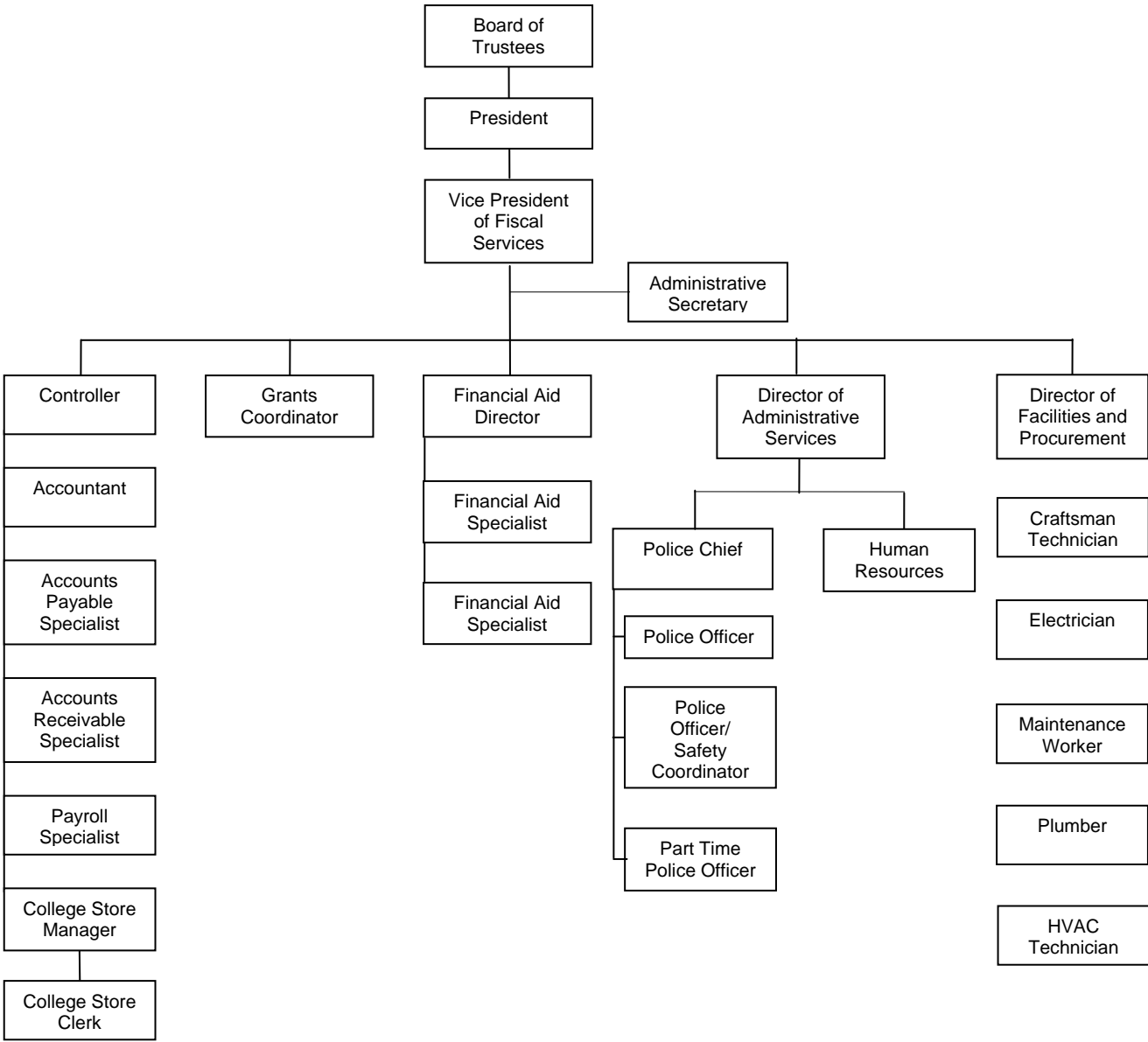
Academic and Career / Technical Instruction Organizational Chart



Student Services Department Organizational Chart



Fiscal Services Organizational Chart



Harrison County

Geography

Harrison County is the 49th largest in population of the 254 counties in Texas with an estimated population of 64,219 in July 2008.¹ Harrison County experienced a 3.4% increase in population since the 2000 census compared to the state increase of 16.7%. The county seat is Marshall (24,357) and Panola College's Marshall Center is housed in this city in the Marshall Mall. Other towns found within the county include Elysian Fields (300); Hallsville (3,166); Harleton (260); Karnack (775); Waskom (2,209); and part of Longview. Harrison County is a metro county which lies within the East Texas Workforce Planning region, administered by the Technology Partnership Organization.

The county consists of 899 square miles with a population density of 69.1 residents per square mile according to the 2000 census. The average density in Texas is 79.6 persons per square mile. The majority of the county is forested and includes the Sabine River and Caddo Lake.

Population Statistics

The Census Bureau estimates the county's race/ethnic distribution in 2008 to be:²

	<i>Harrison County</i>	<i>Texas</i>
White, non Hispanic	67.1%	47.4%
Black	22.4%	11.9%
Hispanic or Latino ³	8.8%	36.5%
Asian/Pacific Islander	0.6%	3.6%
Native American	0.5%	0.8%
Report 2 or more races	1.1%	1.3%

The 2008 estimates for Texas show a population composition according to age as follows:⁴

<i>Age</i>	<i>Harrison County</i>	<i>Texas</i>
0-4	6.3%	7.9%
5-18	19.4%	20.3%
19-29	15.9%	16.8%
30-44	17.4%	21.7%
45-64	27.7%	23.3%
65 plus	13.3%	9.9%

¹ July 1, 2008 population estimates for Texas counties and towns were obtained from the Texas State Data Center and Office of the State Demographer

² U. S. Census Bureau Texas County Quick Facts population estimates, July 2008

³ Hispanics may be of any race, so also are included in other applicable race categories. For this reason, the total percentage may be more than 100%

⁴ July, 2008 population estimates for Harrison County, Texas were obtained from the Texas State Data Center and Office of the State Demographer

If the population cohort 45 and over is higher than the state average, as it is in Harrison County, this suggests a stable, mature population comprised of mainly "empty-nesters," retirees and the aged. When the 30-44-age cohort is higher than the state average, this is a healthy economic situation since this group contains the greatest share of the productive labor force. This is not the case in Harrison County. Decreases over time in the 30-44 age group, especially when similar changes are not occurring statewide, can indicate a poor labor market.

Harrison County had about 23,087 households in 2000 according to the census. This represents an average of 2.62 persons per household. Statewide, there were 2.74 persons per household in 2000 with roughly 7.39 million Texas households. In 2008, an estimated 26% of Harrison County residents were children age 18 or under – these are our potential college students.

Local industry consists primarily of manufacturing, education, health and social services, and retail trade. According to the 2000 census, 59.8% of the over age 16 population of Harrison County is employed. This compares to the Texas rate of 63.6% for that age group. The median household income for Harrison County in 2008 was \$45,016, compared with a state median income of \$50,049. The annual unemployment rate in the county is 8.2% compared to 7.6% statewide (year 2009 annual unemployment data)⁵.

During 2009, the county-wide annual average food stamp recipients were 8,769 people (up 18% from the previous year) with an average of 194 receiving basic TANF. During the first half of 2009, on average 8,547 people were enrolled in Medicaid, including families and children.⁶ It has been estimated that 14.8% of Harrison County residents live below the poverty level, compared to 15.8% rate statewide.⁷

There are six independent school districts in Harrison County: Elysian Fields, Hallsville, Harleton, Karnack, Marshall, and Waskom ISD with an estimated grade 7-12 enrollment of 5,925 and an average drop out rate of 1.2% compared to the state dropout rate of 2.2%.⁸

Tracking graduates from FY 2008 shows that 40% of Elysian Fields High School graduates, 3% of Hallsville High School graduates, 14% of Marshall High School graduates, and 28% of Waskom High School graduates who were known to have enrolled in a public Texas college for fall 2008 enrolled in Panola College. Panola College information was not available from this source for Harleton or Karnack ISDs.⁹

⁵ Texas WorkForce Commission, Labor Market Information Department, 2009

⁶ Temporary Assistance for Needy Families, Food Stamp and Medicaid recipients, 2009 data from Texas Department of State Health Services

⁷ U. S. Census Bureau Texas County Quick Facts population estimates, July 2008

⁸ Texas Education Agency Secondary School Completion and Dropouts in Texas Public Schools, Supplemental County Data, 2007-2008

⁹ Texas Higher Education Coordinating Board publication; note this is not the percentage of the entire graduating class, but only those who were known to enroll in a Texas public college in fall 2008

Marion County

Geography

Marion County is the 185th largest in population of the 254 counties in Texas with an estimated population of 10,667 as of July 2008.¹⁰ The Marion County population decreased by an estimated 2.5% since the 2000 census, compared to the state rate of population growth of 16.7%. The county seat of Marion is Jefferson (2,011) which is by far the most populated city in the county. Marion County is a rural county which lies within the East Texas Workforce Planning region, administered by the Technology Partnership Organization.

The county consists of 381 square miles with a Census 2000 population density estimate of 28.7 residents per square mile. The average density in Texas was estimated to be 79.6 persons per square mile for that same time period. Pines and hardwood forests cover most of the county and the watershed drains to Caddo Lake, Lake O' the Pines, and Cypress Bayou.

Population Statistics

The Census Bureau estimates the county's race/ethnic distribution in 2008 to be:¹¹

	<i>Marion County</i>	<i>Texas</i>
White	72.9%	47.4%
Black	21.3%	11.9%
Hispanic or Latino ¹²	3.2%	36.5%
Asian/Pacific Islander	0.4%	3.6%
Native American	1.0%	0.8%
Report 2 or more races	1.7%	1.3%

The 2008 estimates for Texas show a population composition according to age as follows:¹³

<i>Age</i>	<i>Marion County</i>	<i>Texas</i>
0-4	5.3%	7.9%
5-18	15.9%	20.3%
19-29	11.7%	16.8%
30-44	13.9%	21.7%
45-64	30.6%	23.3%
65 plus	22.3%	9.9%

¹⁰ July 1, 2008 population estimates for Texas counties and towns were obtained from the Texas State Data Center and Office of the State Demographer

¹¹ U. S. Census Bureau Texas Quick Facts population estimates, 2008

¹² Hispanics may be of any race, so also are included in other applicable race categories. For this reason, the total percentage may be more than 100%

¹³ July, 2008 population estimates for Marion County, Texas were obtained from the Texas State Data Center and Office of the State Demographer

If the population cohort 45 and over is higher than the state average as it is in Marion County, this suggests a stable, mature population comprised of mainly "empty-nesters," retirees and the aged. When the 30-44-age cohort is higher than the state average, this is a healthy economic situation since this group contains the greatest share of the productive labor force. Decreases over time in this group as is the case in Marion County, especially when similar changes are not occurring statewide, can indicate a poor labor market.

Marion County had about 4,610 households in 2000 according to the census. This represents an average of 2.35 persons per household. Statewide, there were 2.82 persons per household in 2000 with roughly 7.39 million Texas households. In 2008, an estimated 21.2% of Marion County residents are children were age 18 or under– these are our potential college students.

Local industry consists primarily of tourism, timber and food processing. According to the 2000 census, 50.4% of the over age 16 population of Marion County is employed. This compares to the Texas rate of 63.6% for that age group. The median household income of Marion County in 2008 was \$31,510 compared to the state median household income of \$50,049. The annual unemployment rate in the county is 10.5% compared to 7.6% statewide (year 2009 annual unemployment data).¹⁴

During 2009, the county-wide annual average food stamp recipients were 1,576 people (up 20% from the previous year) with an average of 3 receiving basic TANF. During the first half of 2009, on average 1,219 people were enrolled in Medicaid, including families and children.¹⁵ It has been estimated that 21.6% of Marion County residents live below the poverty level, compared to 15.8% rate statewide.¹⁶

There is one independent school district in the county: Jefferson ISD with a grade 7-12 enrollment of 636 students and an average drop out rate of 2.0% compared to the state dropout rate for the same age level of 2.2%.¹⁷

¹⁴ Texas WorkForce Commission, Labor Market Information Department, 2009

¹⁵ Temporary Assistance for Needy Families, Food Stamp and Medicaid recipients, 2009 data from Texas Department of State Health Services

¹⁶ U. S. Census Bureau Texas County Quick Facts population estimates, July 2008

¹⁷ Texas Education Agency Secondary School Completion and Dropouts in Texas Public Schools, Supplemental County Data, 2007-2008

Panola County

Geography

Panola County ranks the 104th largest in population of the 254 counties in Texas with an estimated population of 23,265 in July 2008.¹⁸ Panola County's population increased an estimated 2.2% since the 2000 census, compared to the state rate of population growth of 16.7%. The city of Carthage, with an estimated population of 6,937, is the county seat and is the site of Panola College. Other towns in the county include: Beckville (772); Clayton (79); DeBerry (191); Gary (318); Long Branch (181); Panola (296); and Tatum (1,177). Panola County is a rural county which lies within the East Texas Workforce service delivery area and the East Texas Quality Workforce Planning region, administered by the Technology Partnership Organization.

The county consists of 801 square miles with a Census 2000 population density of 28.4 residents per square mile. The average density in Texas is 79.6 persons per square mile for that same period. Panola county is 60% forested; rolling plains that are broken by the Sabine River, Murval Creek and Toledo Bend Reservoir.

Population Statistics

The Census Bureau estimates the county's race/ethnic distribution in 2008 to be:¹⁹

	<i>Panola County</i>	<i>Texas</i>
White	74.5%	47.4%
Black	17.8%	11.9%
Hispanic or Latino ²⁰	6.1%	36.5%
Asian/Pacific Islander	0.5%	3.6%
Native American	0.4%	0.8%
Report 2 or more races	0.9%	1.3%

The 2008 estimates for Texas show a population composition according to age as follows:²¹

<i>Age</i>	<i>Panola County</i>	<i>Texas</i>
0-4	6.3%	7.9%
5-18	18.4%	20.3%
19-29	14.8%	16.8%
30-44	15.1%	21.7%
45-64	28.4%	23.3%
65 plus	17.0%	9.9%

¹⁸ July 1, 2008 population estimates for Texas counties and towns were obtained from the Texas State Data Center and Office of the State Demographer

¹⁹ U. S. Census Bureau Texas Quick Facts population estimates, 2008

²⁰ Hispanics may be of any race, so also are included in other applicable race categories. For this reason, the total percentage may be more than 100%

²¹ July, 2008 population estimates for Panola County, Texas were obtained from the Texas State Data Center and Office of the State Demographer

If the population cohort 45 and over is higher than the state average, as it is in Panola County, this suggests a stable, mature population comprised of mainly "empty-nesters," retirees and the aged. When the 30-44-age cohort is higher than the state average, this is a healthy economic situation since this group contains the greatest share of the productive labor force. Decreases over time in this group, as is the case with Panola County, especially when similar changes are not occurring statewide, can indicate a poor labor market.

Panola County had about 8,821 households in 2000 according to the census. This represents an average of 2.53 persons per household. Statewide, there were 2.82 persons per household in 2000 with roughly 7.39 million Texas households. In 2008, an estimated 24.7% of Panola County residents are children were age 18 or under– these are our potential college students.

Local industry consists primarily of gas processing, oil-field operations, agribusinesses, forestry, and other varied types of manufacturing. According to the 2000 census, 54.7% of the over age 16 population of Panola County is employed. This compares to the Texas rate of 63.6% for that age group. The median household income in 2008 was \$42,917 compared to the state median household income of \$50,049. The annual unemployment rate in the county is 7.4% compared to 7.6% statewide (year 2009 annual unemployment data).²²

During 2009, the county-wide annual average food stamp recipients were 2,473 people (up 88% from the previous year) with an average of 32 receiving basic TANF. During the first half of 2009, on average 2,628 people were Medicaid clients, including families and children.²³ It has been estimated that 13.9% of Panola County residents live below the poverty level, compared to 15.8% rate statewide.²⁴

There are three independent school districts and one charter school in the county: Beckville, Carthage and Gary ISD and Panola Charter School with an estimated grade 7-12 enrollment of 1,944 and an average drop out rate of 1.6% compared to the state dropout rate of 2.2%.²⁵

Tracking graduates from FY 2008 shows that 60% of Carthage High School graduates and 50% of Panola Charter School graduates who were known to have enrolled in a Texas public college for fall 2008 enrolled in Panola College. Panola College information was not available from this source for Beckville ISD or Gary ISD.²⁶

²² Texas WorkForce Commission, Labor Market Information Department, 2009

²³ Temporary Assistance for Needy Families, Food Stamp and Medicaid recipients, 2009 data from Texas Department of State Health Services

²⁴ U. S. Census Bureau Texas County Quick Facts population estimates, July 2008

²⁵ Texas Education Agency Secondary School Completion and Dropouts in Texas Public Schools, Supplemental District Data, 2007-2008

²⁶ Texas Higher Education Coordinating Board publication; note this is not the percentage of the entire graduating class, but only those who were known to enroll in a Texas public college in fall 2008.

Shelby County

Geography

Shelby County is the 96th largest in population of the 254 counties in Texas with an estimated population of 26,209 in July 2008.²⁷ Shelby County's population has had an estimated increase of 3.9% since the 2000 census, compared to the state rate of population growth of 16.7%. The county seat of Shelby is Center (5,934), so named because of its location in the center of the county. Panola College's Shelby College Center and Shelby Regional Training Center are located in Center, Texas. Other towns in the county include Timpson (1,108), Tenaha (1,057), Joaquin (1,007), and Shelbyville (215).

The county consists of 794 square miles with a Census 2000 population density of 31.8 residents per square mile. The average density in Texas is 79.6 persons per square mile for that same period. A large proportion on the county is hardwood bottomland and 67,762 acres is national forest land. Bodies of water include Attoyac Bayou and Toledo Bend Reservoir with many other streams.

Population Statistics

The Census Bureau estimates the county's race/ethnic distribution in 2008 to be:²⁸

	<i>Shelby County</i>	<i>Texas</i>
White	65.2%	47.4%
Black	17.9%	11.9%
Hispanic or Latino ²⁹	15.8%	36.5%
Asian/Pacific Islander	1.7%	3.6%
Native American	0.4%	0.8%
Report 2 or more races	1.0%	1.3%

The 2008 estimates for Texas show a population composition according to age as follows:³⁰

<i>Age</i>	<i>Shelby County</i>	<i>Texas</i>
0-4	7.3%	7.9%
5-18	20.0%	20.3%
19-29	14.1%	16.8%
30-44	17.0%	21.7%
45-64	25.0%	23.3%
65 plus	16.4%	9.9%

²⁷ July 1, 2008 population estimates for Texas counties and towns were obtained from the Texas State Data Center and Office of the State Demographer

²⁸ U. S. Census Bureau Texas Quick Facts population estimates, 2008

²⁹ Hispanics may be of any race, so also are included in other applicable race categories. For this reason, the total percentage may be more than 100%

³⁰ July, 2008 population estimates for Shelby County, Texas were obtained from the Texas State Data Center and Office of the State Demographer

If the population cohort 45 and over is higher than the state average as it is in Shelby County, this suggests a stable, mature population comprised of mainly "empty-nesters", retirees and the aged. When the 30-44-age cohort is higher than the state average, this is a healthy economic situation since this group contains the greatest share of the productive labor force. Decreases over time in this group, as is the case in Shelby County, especially when similar changes are not occurring statewide, can indicate a poor labor market.

Shelby County had about 9,595 households in 2000 according to the census. This represents an average of 2.59 persons per household. Statewide, there were 2.82 persons per household in 2000 with roughly 7.39 million Texas households. In 2007, an estimated 27.3% of Shelby County residents are children under age 18 – these are our potential college students.

Local industry consists primarily of broiler, egg production, cattle, timber and tourism. According to the 2000 census, 53.5% of the over age 16 population of Shelby County is employed. This compares to the Texas rate of 63.6% for that age group. The median household income in 2008 was \$35,154 compared to the state median household income of \$50,049. The annual unemployment rate in the county is 7.4% compared to 7.6% statewide (year 2009 annual unemployment data).³¹

During 2009, the county-wide annual average food stamp recipients were 4,025 people (up 205% from the previous year) with an average of 96 receiving basic TANF. During the first half of 2009, on average 4,097 people were enrolled in Medicaid, including families and children.³² It has been estimated that 23.5% of Shelby County residents live below the poverty level, compared to 15.8% rate statewide.³³

There are six independent school districts in the county: Center, Excelsior, Joaquin, Shelbyville, Tenaha, and Timpson ISD with an estimated grade 7-12 enrollment of 2,304 and an average drop out rate of 0.6% compared to the state dropout rate of 2.2%.³⁴

Tracking graduates from FY 2008 shows that 37% of Center High School graduates, 57% of Joaquin High School graduates, 47% of Shelbyville High School graduates, and 50% of Timpson High School graduates who were known to have enrolled in a Texas public college for fall 2008 enrolled in Panola College. Panola College information was not available from this source for Tenaha ISD.³⁵

³¹ Texas WorkForce Commission, Labor Market Information Department, 2009

³² Temporary Assistance for Needy Families, Food Stamp and Medicaid recipients, 2009 data from Texas Department of State Health Services

³³ U. S. Census Bureau Texas County Quick Facts population estimates, July 2008

³⁴ Texas Education Agency Secondary School Completion and Dropouts in Texas Public Schools, Supplemental District Data, 2007-2008

³⁵ Texas Higher Education Coordinating publication; note this is not the percentage of the entire graduating class, but only those who were known to enroll in a Texas public college in fall 2008

Panola College District Demographics

Educational Attainment – Population 25 years and older, 2000 census						
	Harrison County	Marion County	Panola County	Shelby County	4 County College District	Texas
No HS diploma or GED	21.7%	32.5 %	24.2%	31.1%	25.2%	24.4%
High school graduate or GED	34.1 %	33.1%	34.8%	35.5%	34.4%	24.8%
Some college, no degree	23.1 %	22.3%	22.4%	18.3%	21.9%	22.4%
Associate degree	5.7 %	3.5%	5.2%	3.0%	4.8%	5.2%
Bachelor's degree	10.8 %	5.5%	8.8%	7.6%	9.2%	15.6%
Graduate or professional degree	4.6%	3.0%	4.6%	4.6%	4.5%	7.6%
HS graduate or higher	78.3%	67.5%	75.8%	68.9%	74.8%	75.9%
Bachelor's degree or higher	15.4%	8.5%	13.4%	12.2%	13.7%	23.2%

Income Data, Year 2007						
Year 2007	Harrison County	Marion County	Panola County	Shelby County	4 County College District	Texas
Persons below poverty level ³⁶	16.5%	25.0%	13.7%	18.3%	17.1%	15.8%
Median household income ³⁷	\$40,873	\$31,043	\$42,324	\$33,420	\$38,957	\$47,563
Per capita income ³⁸	\$32,435	\$24,366	\$31,882	\$26,190	\$26,193	\$37,083

<p>New students (First Time in College / Full Time) entering Panola College in Fall 2009: 41.8% of new students were enrolled in developmental math 20.1% of new students were enrolled in developmental reading 19.2% of new students were enrolled in developmental writing</p>

³⁶ U. S. Census Bureau Texas County Quick Facts population estimates, July 2008

³⁷ U. S. Census Bureau Texas County Quick Facts population estimates, July 2008

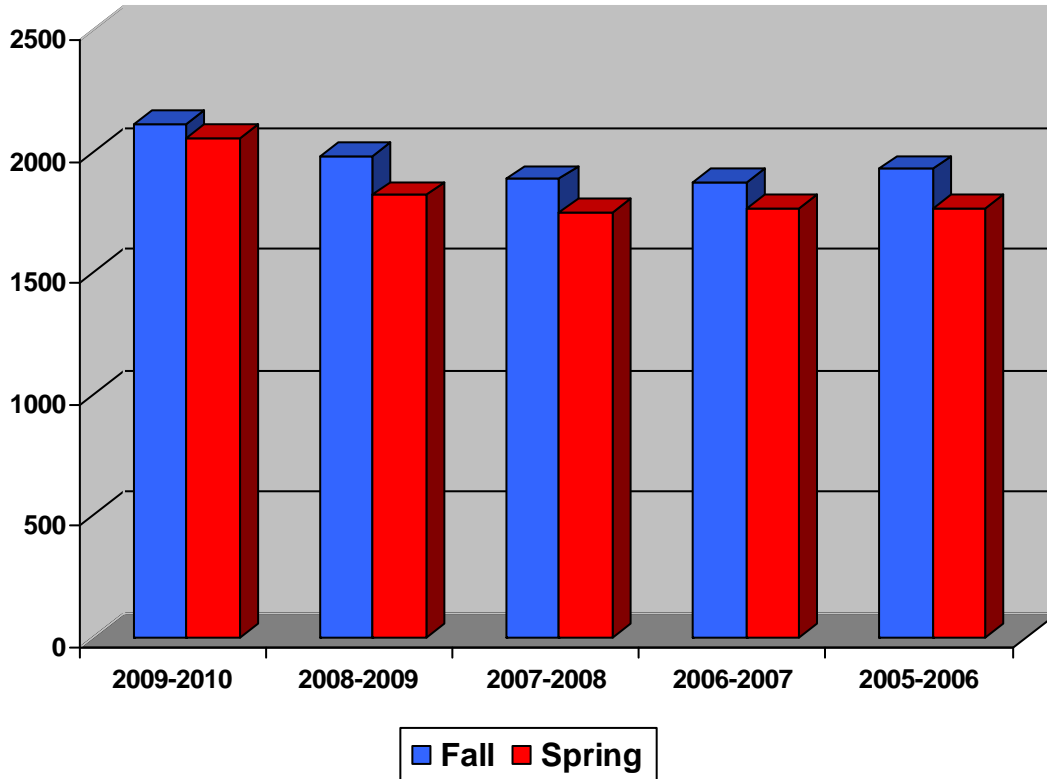
³⁸ Bureau of Economic Analysis, 2007 Per Capita Income



Panola College Volleyball Team 2009-2010, Photo Courtesy of The Pony Express

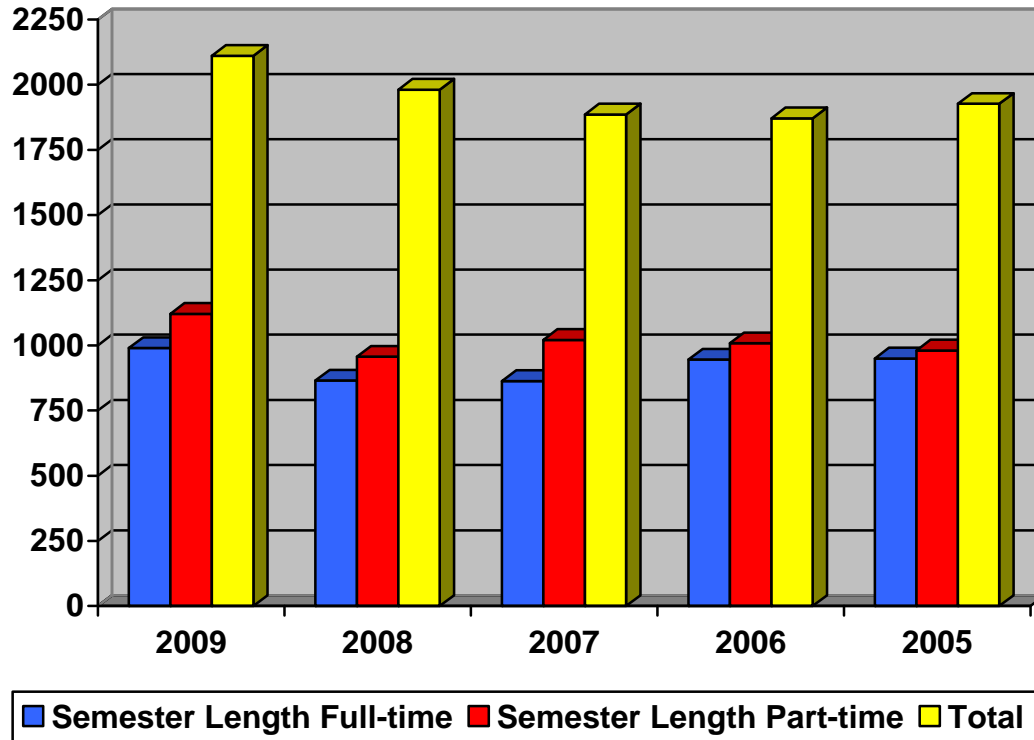
Institutional Data

Five Year Fall / Spring Enrollment Report



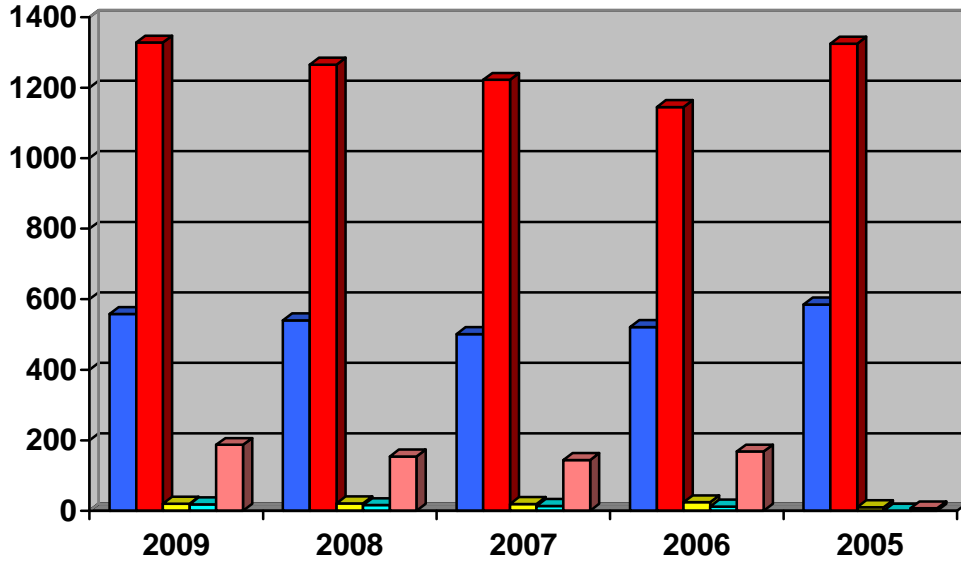
	Year	2009-2010	2008-2009	2007-2008	2006-2007	2005-2006
Number of Students	Fall	2111	1981	1886	1871	1927
	Spring	2054	1820	1753	1766	1769

**Five Year Credit Enrollment By Full-time/Part-time Status
Fall Semesters**



Status	2009	2008	2007	2006	2005
Semester Length Full-time	990	957	865	863	946
Semester Length Part-time	1121	1024	1021	1008	981
Total	2111	1981	1886	1871	1927

Five Year Fall Credit Enrollment By Tuition Status and Geographical Distribution



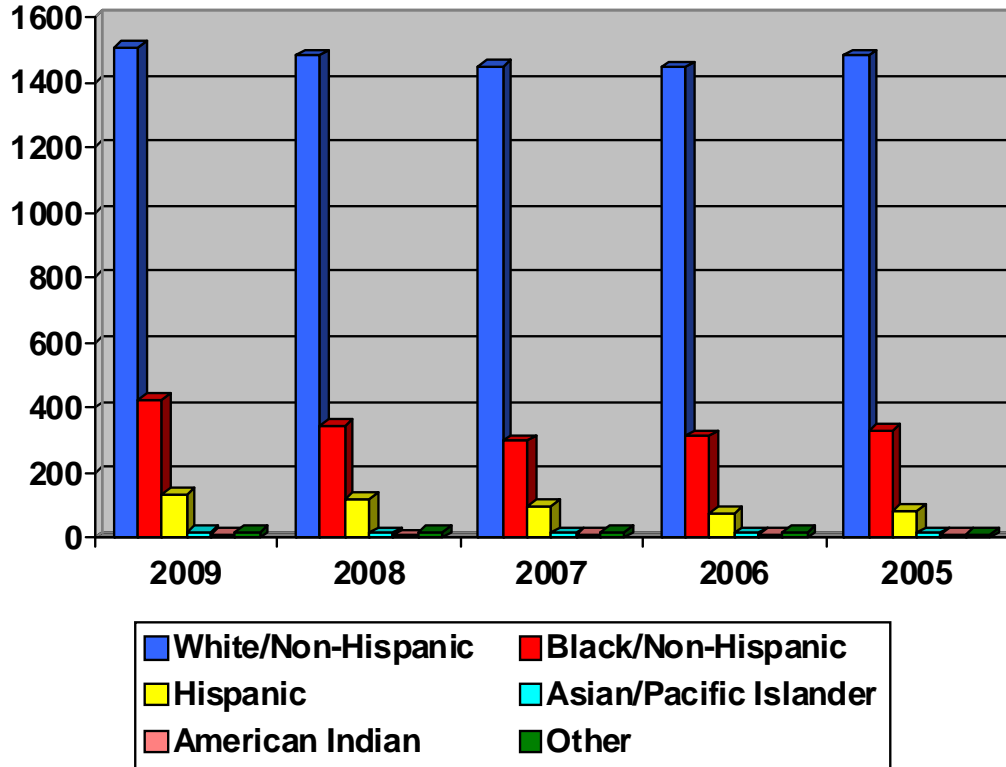
■ In-County	■ Out-of-County (includes LA)
■ Out-of-State (excludes LA)	■ Foreign
■ Exemption waivers (includes LA)	

Tuition Status	2009	2008	2007	2006	2005
In-County	558	540	501	522	585
Out-of-County	1343	1265	1215	1154	1324
Out-of-State (excludes LA)	20	21	19	27	10
Exemption waivers (includes LA)	182*	154*	144*	168*	7
Other (Hazelwood and Barksdale)	8	1	7		1
Total	2111	1981	1886	1871	1927

*Prior to Fall 2006, LA residents were counted as out of county tuition status. As of Fall 2006, LA residents are reported in the exemptions/waivers category.

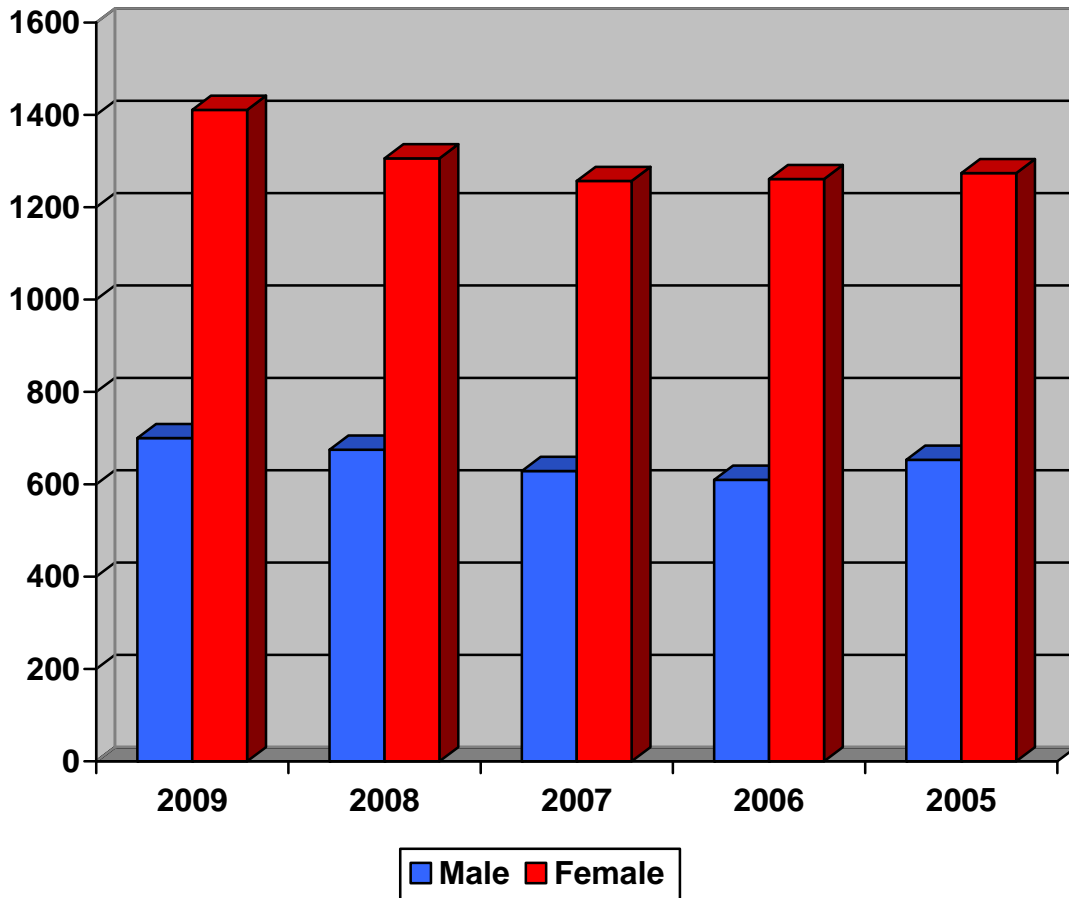
Geographic Distribution	2009	2008	2007	2006	2005
In-State	1886	1807	1721	1675	1758
Out-of-State	207	158	151	184	158
Foreign	18	16	14	12	11
Total	2111	1981	1886	1871	1927

**Five Year Trend of Credit Students By Ethnicity
Fall Semesters**



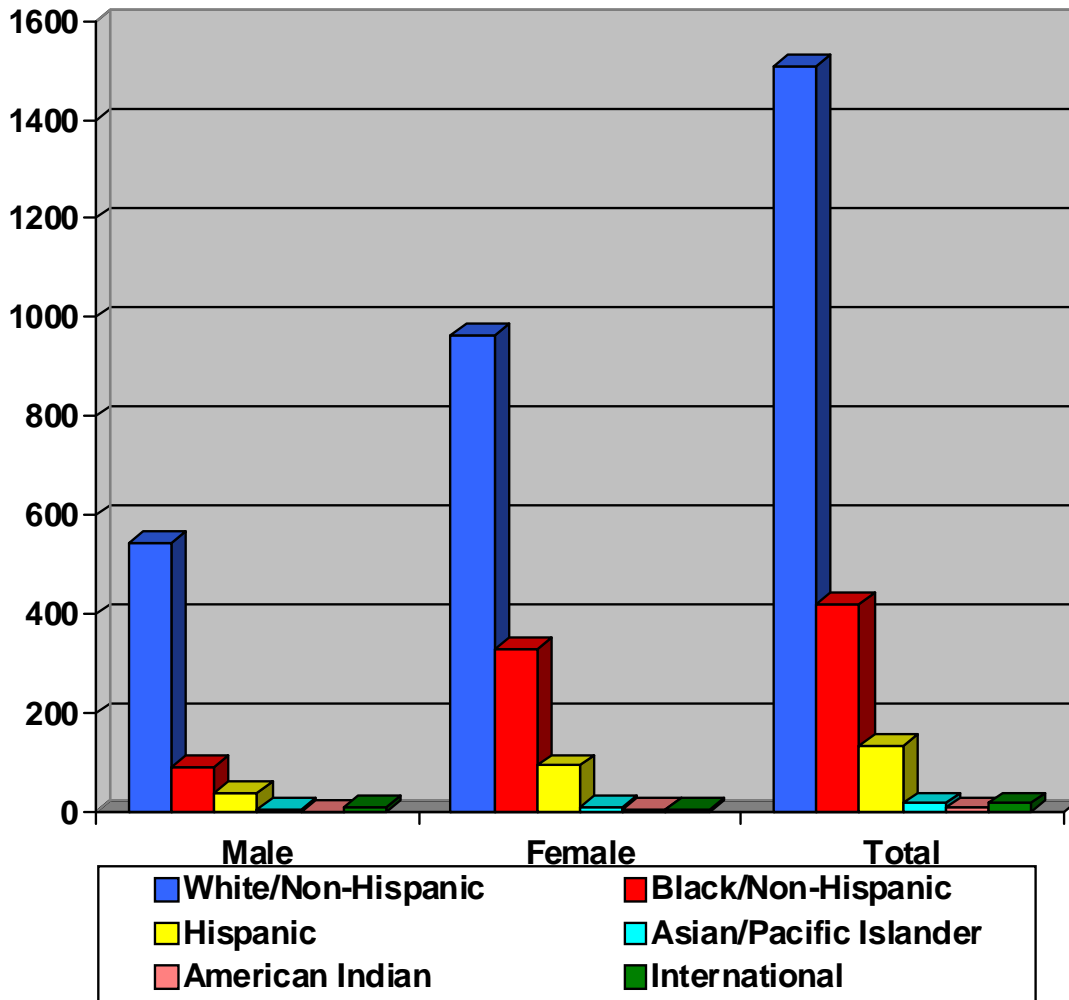
Ethnic Group	2009	2008	2007	2006	2005
White/Non-Hispanic	1508	1481	1448	1444	1482
Black/Non-Hispanic	422	343	297	312	328
Hispanic	135	121	99	74	81
Asian/Pacific Islander	19	13	14	15	13
American Indian	9	6	11	10	12
International	18	17	17	16	11
Total	2111	1981	1886	1871	1927

**Five Year Trend of Credit Students by Gender
Fall Semesters**



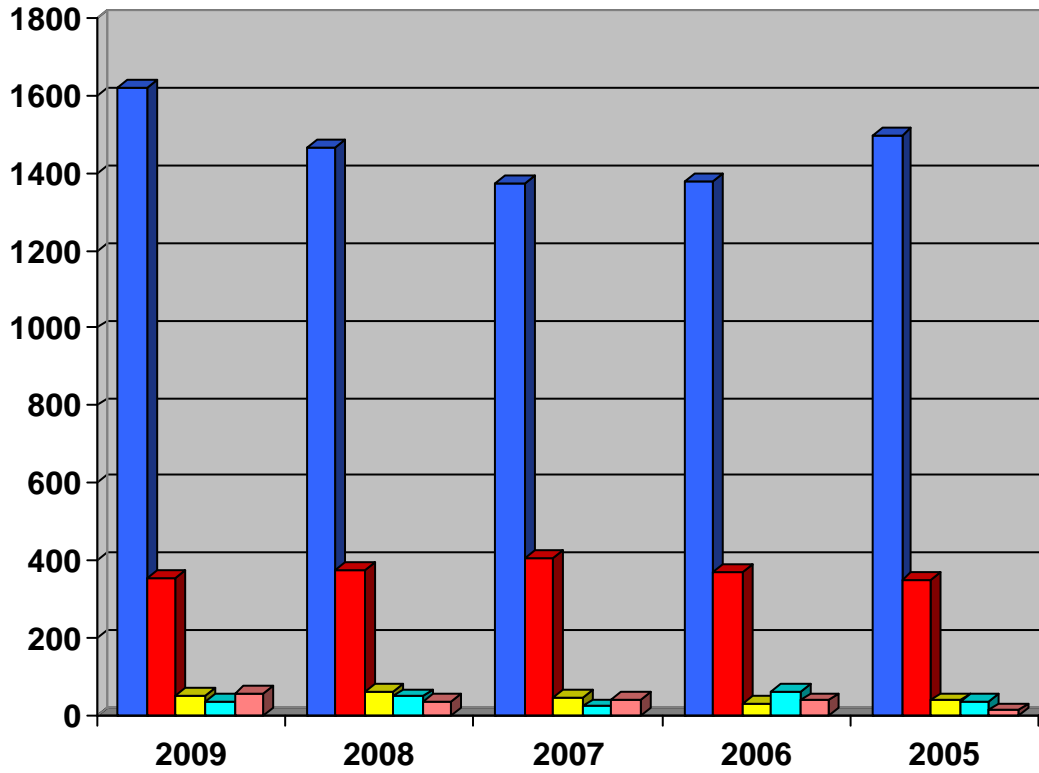
Classification	2009	2008	2007	2006	2005
Male	700	675	629	610	653
Female	1411	1306	1257	1261	1274
Total	2111	1981	1886	1871	1927

Fall 2009 Credit Students Ethnic/Gender Breakdown



Ethnic Group	Male	Female	Total
White/Non-Hispanic	545	963	1508
Black/Non-Hispanic	93	329	422
Hispanic	41	94	135
Asian/Pacific Islander	8	11	19
American Indian	2	7	9
International	11	7	18
Total	700	1411	2111

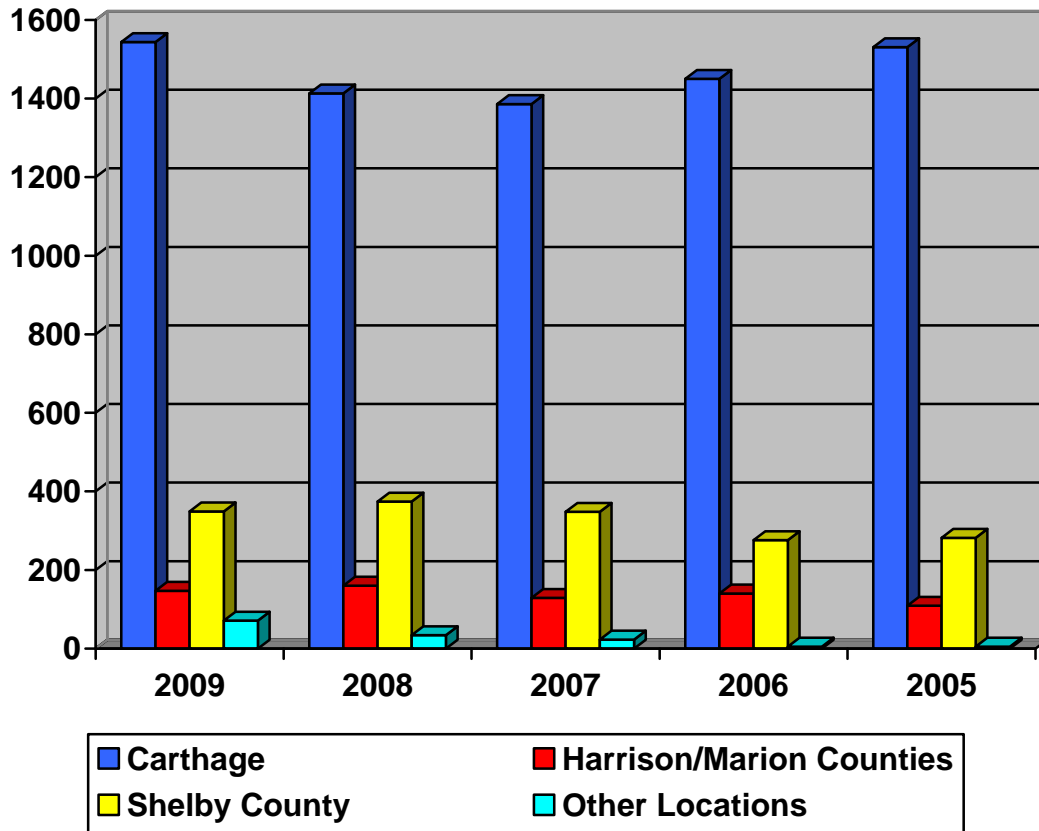
Five Year Fall Enrollment By Level



■ Freshman ■ Sophomore ■ Associates ■ Bachelors ■ Unclassified

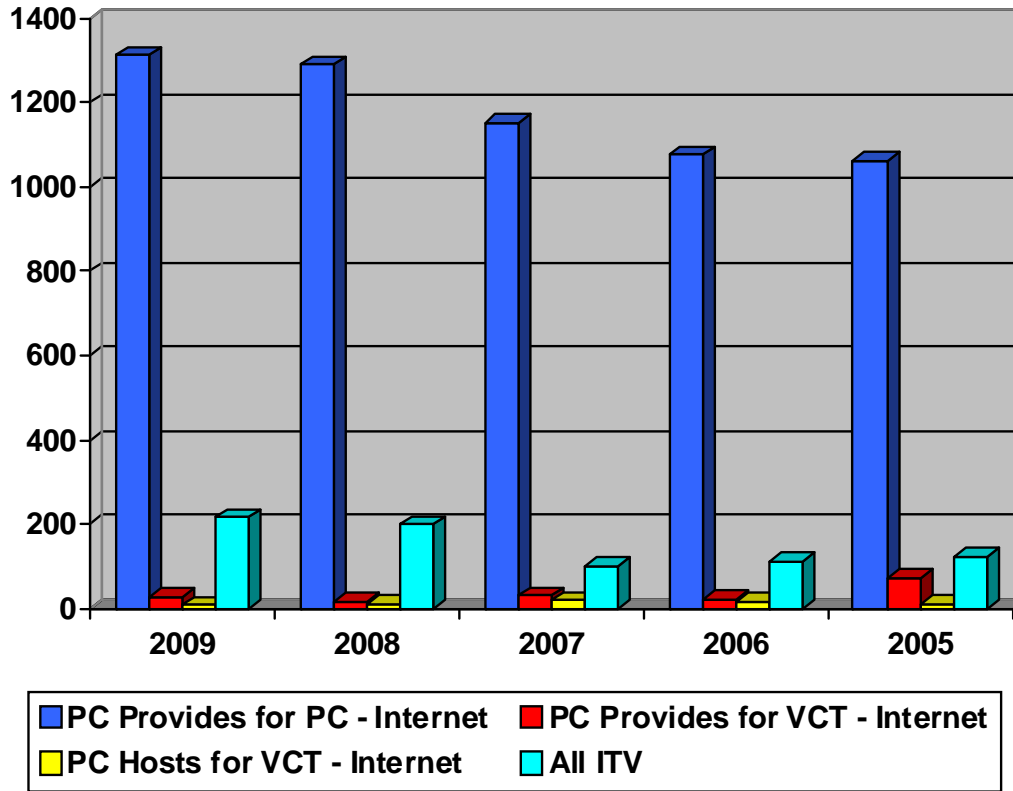
Level	2009	2008	2007	2006	2005
Freshman	1622	1467	1374	1379	1496
Sophomore	353	373	404	368	347
Associates	48	59	46	29	37
Bachelors	34	47	21	58	36
Unclassified	54	35	41	37	11
Total	2111	1981	1886	1871	1927

**Five Year Trend of Fall Student Headcount
Breakdown By Campus**



Campus	2009	2008	2007	2006	2005
Carthage	1544	1413	1386	1450	1531
Harrison/Marion Counties	147	160	129	140	109
Shelby County	349	374	348	276	282
Other Locations	71	34	23	5	5
Total	2111	1981	1886	1871	1927

Fall Distance Learning Duplicated Headcount



Mode of Delivery *	2009	2008	2007	2006	2005
Internet					
PC Provides for PC	1196	1183	1151	1076	1061
PC Provides for PC – Flex mid-semester	54	107			
PC Provides for PC – Hybrid	62				
PC Provides for VCT	26	14	31	22	72
PC Hosts for VCT	7	11	18	15	12
PC students receiving courses from other colleges per agreement	0	0	3	9	
Kilgore and Paris students receiving PC courses per agreement	0	0	26	37	
Internet Total	1345	1315	1229	1159	1145
Interactive Television					
PC Provides PC at Remote Sites	175	183	65	57	80
PC Provides for VCT	0	4	31	28	4
PC Provides for PC – Hybrid Flex	30				
Angelina/Kilgore students receiving PC courses per agreement	0	0	0	0	3
PC students receiving Angelina/Kilgore/Paris/TJC courses per agreement	11	11	2	25	12
Community Service for University courses	0	0	1	0	24
ITV Total	216	198	99	110	123
Total	1561	1513	1328	1269	1268

* An explanation of modes of delivery is on the following page.

Definition of Distance Learning Modes of Delivery

Internet Courses

PC Provides for PC – Panola College students are enrolled in Internet courses offered by Panola College.

PC Provides for VCT – Students enrolled in other community colleges take Panola College Internet courses through the Virtual College of Texas (VCT). These students are not counted toward state funding, but Panola College receives a lease fee of \$195 for each student.

PC Hosts for VCT – Panola College students are enrolled in other community colleges' courses through the Virtual College of Texas. Panola College receives state funding for these students and pays lease fees to the providing colleges.

PC students receiving courses from other colleges – Panola College students are taking an Internet course from other colleges per agreement with no exchange of funds. These students are being processed through the VCT.

Students from Other Community Colleges Receiving Courses – Students are taking an Internet course from Panola College per agreement with no exchange of funds. These students are being processed through the VCT.

PC Provides for PC – Flex mid-semester classes – Students taking Internet courses for 8 weeks. Two flex courses are offered per semester.

PC Provides Online Hybrid for PC – Classes meet face-to-face with over 51% of coursework online.

Interactive Television (ITV) Courses

PC Provides for PC Students at Remote Sites – Panola College students are enrolled in ITV courses offered by Panola College. Only the students at remote sites are counted in this category. The students seated in the originating classroom with the instructor are not included in this count. Remote sites include Shelby College Center, Marshall Mall, and area high schools.

PC Provides for VCT – Students are enrolled in Panola College ITV courses through VCT. These students are not counted toward state funding, but Panola College receives a course lease fee of \$195 for each of these students.

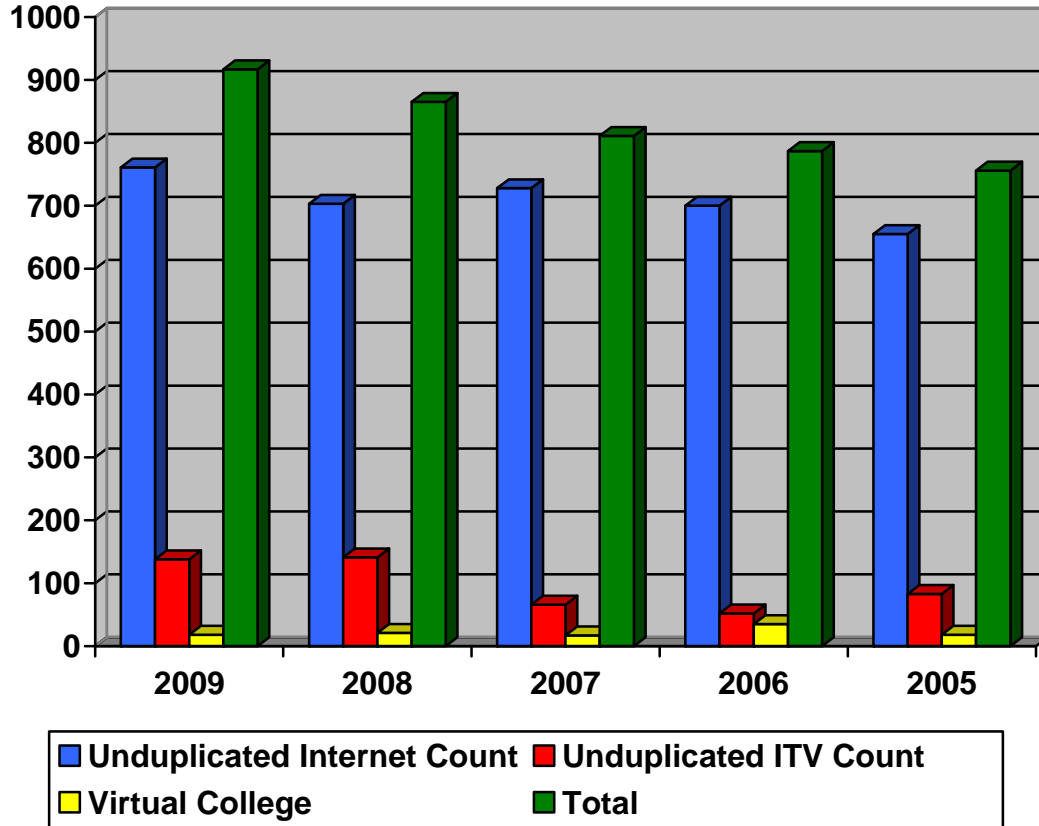
Other Community College Students Receiving PC Courses – An agreement allows institutions to mutually share courses via ITV using the NorthEast Texas Network (NETnet) system with no exchange of funds. These students are processed through the VCT.

PC Students Receiving Other Community College Courses – An agreement allows mutually shared courses via ITV using the NorthEast Texas Network (NETnet) system with no exchange of funds. These students are processed through the VCT.

Community Service for University Courses – Panola College receives upper level university courses via the NETnet system. There is no fee charged these students.

PC Provides Hybrid Online Flex for PC – Students taking 8 week ITV class meet face-to-face with over 51% of the coursework online.

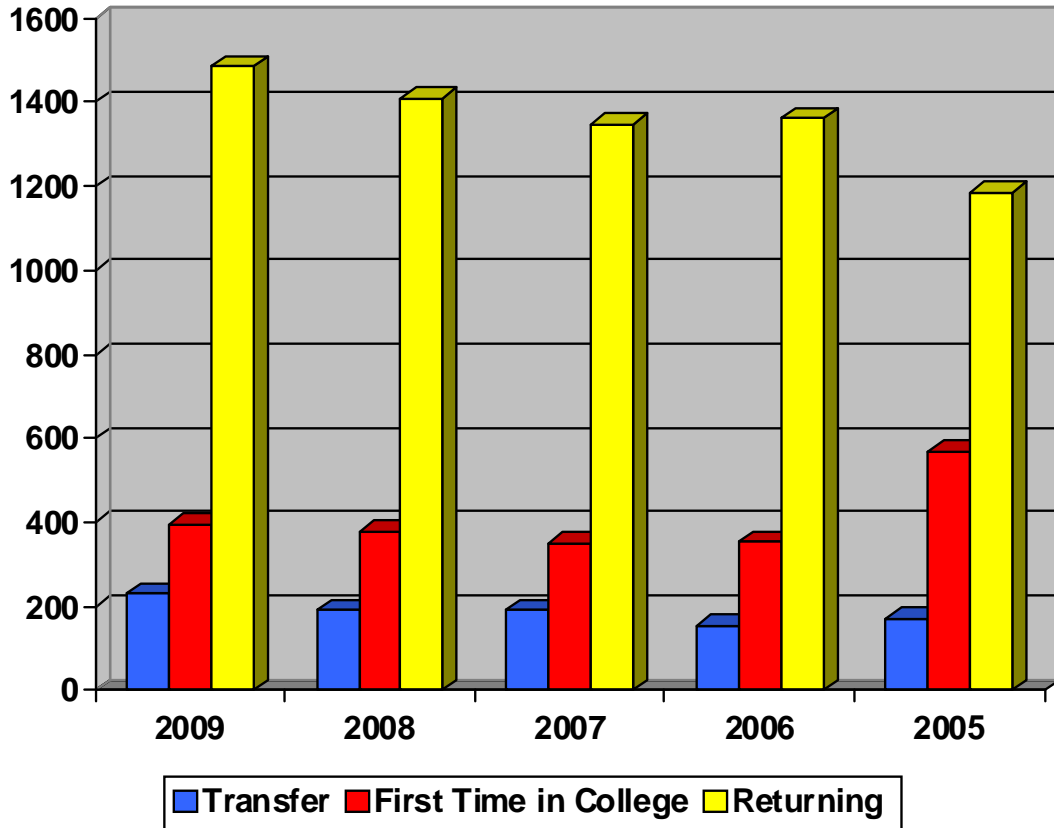
**Five Year Trend for Fall Distance Learning Enrollment
Unduplicated Head Count**



Headcount	2009	2008	2007	2006	2005
Unduplicated Internet Count	761	703	728	700	655
Unduplicated ITV Count	138	141	66	52	83
Virtual College (Internet-based)	18	21	17	35	18
Unduplicated Total **	917	865	811	787	756

** Some students may be enrolled in both Internet and ITV classes and counted once for each of the individual categories. Therefore, a student who is counted in the unduplicated headcount for the Internet and for the ITV categories will be counted more than once in the Total category.

**Five Year Trend
Fall Student Distribution**



Distribution	2009	2008	2007	2006	2005
Transfer	231	192	190	156	172
First Time in College**	394	378	350	353	568
Returning	1486	1411	1346	1362	1187
Total	2111	1981	1886	1871	1927

** First Time in College Fall 2009	Number
May 2009 Graduates	214
May 2009 Graduates with Prior Dual Enrollment or Early Admission	71
Previous High School Graduates	69
Previous HS Graduates with Prior Dual Enrollment or Early Admission	5
Individual Applications	5
GED Entrants	28
Total	392

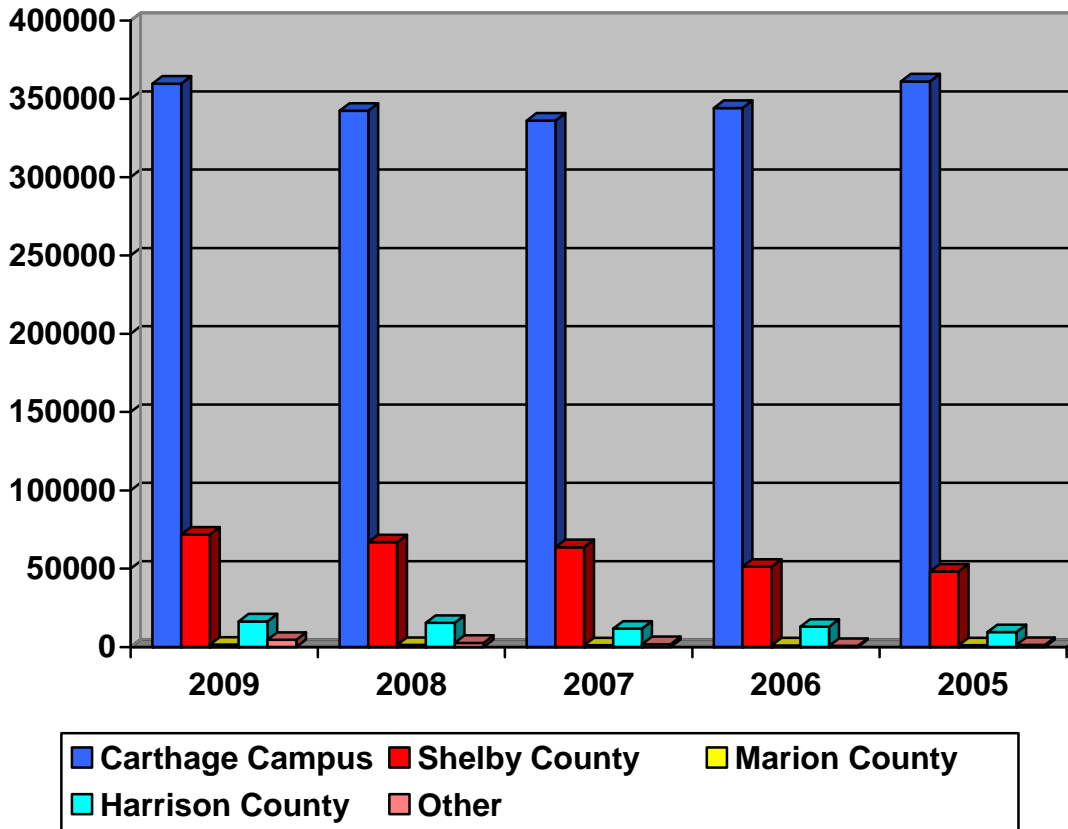
**Seven Year Trend of
Fall Contact Hours By Program Area:
Academic and Career / Technical**

Academic (Funded*)	2009	2008	2007	2006	2005	2004	2003
Agriculture	2,592	2,544	1,584	2,832	4,000	2,400	
Biology	44,160	32,352	34,992	38,880	39,840	43,584	39,744
Business Mgmt., Mrkting	2,736	4,224	4,608	3,120	4,368	4,848	5,328
Communications	1,440	3,504	912	1,248	2,304	1,824	0
Computer Science	11,808	12,960	12,192	14,256	16,272	13,488	13,872
Consumer Home EC (Nutrition)	4,800	7,216	6,112	8,128	5,520	4,032	2,736
Consumer Home EC (Education)	5,008						
Criminal Justice, Public Admin.	1,680	1,584	912	672	768	1,392	
Foreign Language	2,640	2,592	2,256	2,112	2,640	2,016	2,944
Health	3,648	2,736	2,928	2,016	2,592	2,928	1,152
Letters	47,904	45,648	46,416	46,416	52,544	49,120	47,856
Mathematics	35,040	31,872	29,520	30,560	31,328	30,432	31,312
Physical Education and Fitness	19,776	19,632	20,112	20,256	25,632	23,760	19,200
Physical Science	13,184	11,184	13,184	11,200	13,184	11,456	11,536
Psychology and Sociology	20,352	15,680	12,496	13,216	10,608	11,328	14,592
Social Science	32,784	34,080	34,800	32,736	35,040	39,168	36,768
Visual and Performing Art	31,664	30,528	29,968	31,968	29,872	30,416	26960
Total Funded Academic CH	281,216	258,336	252,992	259,616	276,512	272,192	254,000

Career / Technical (Funded*)	2009	2008	2007	2006	2005	2004	2003
Agriculture (FTN/ENV/PET)		1,296	1,344	48			
Business Mgmt, Admin (OST)	11,088	12,832	9,216	11,520	9,312	10,224	9,024
Communication/Social Sci PET	384						
Computer Info Systems related	8,640	3,408	3,024	3,936	3,312	5,536	3,344
Cosmetology (Cons & HEC)	27,808	27,440	25,888	20,192	23,360	28,256	24,448
Education Technology	0	704	1,344	0	704		
Environmental Technology	672	816	816	0	864	432	
Foreign Language (ADN, OTA)	1,472	1,248	1,184	1,968	1712	1568	832
Foreign Language (ITech/PTech)	288	320					
Forest Technology	0	0	0	0	0	0	3,168
Graphics Arts/Animation	0	0	0	480			
Health Information Technology	6,960	8,608	6,512	6,928	9,136	10,496	8,400
Industrial/Petroleum Technology	13,584	16,336	11,392	3,552	5,568	1,664	2,320
Welding	9,696	9,056	8,672	8,720	10,944	5,408	4,288
Associate Degree Nursing	35,456	32,512	37,472	35,152	30,832	30,736	25,760
Vocational Nursing	34,912	38,608	36,640	39,040	35,952	33,104	32,496
Nurse Aid CNA	1,520						
Occupational Therapy	17,344	14,272	14,320	16,048	13,712	10,064	9,696
Total Funded* Career / Tech. CH	169,824	167,456	157,824	147,584	145,408	137,488	123,776
Total Funded* Academic and Career / Technical CH	451,040	425,792	410,816	407,200	421,920	409,680	377,776

* Some contact hours are not funded by the state due to repeated courses.

**Fall Contact Hours By Campus:
Academic and Career / Technical**



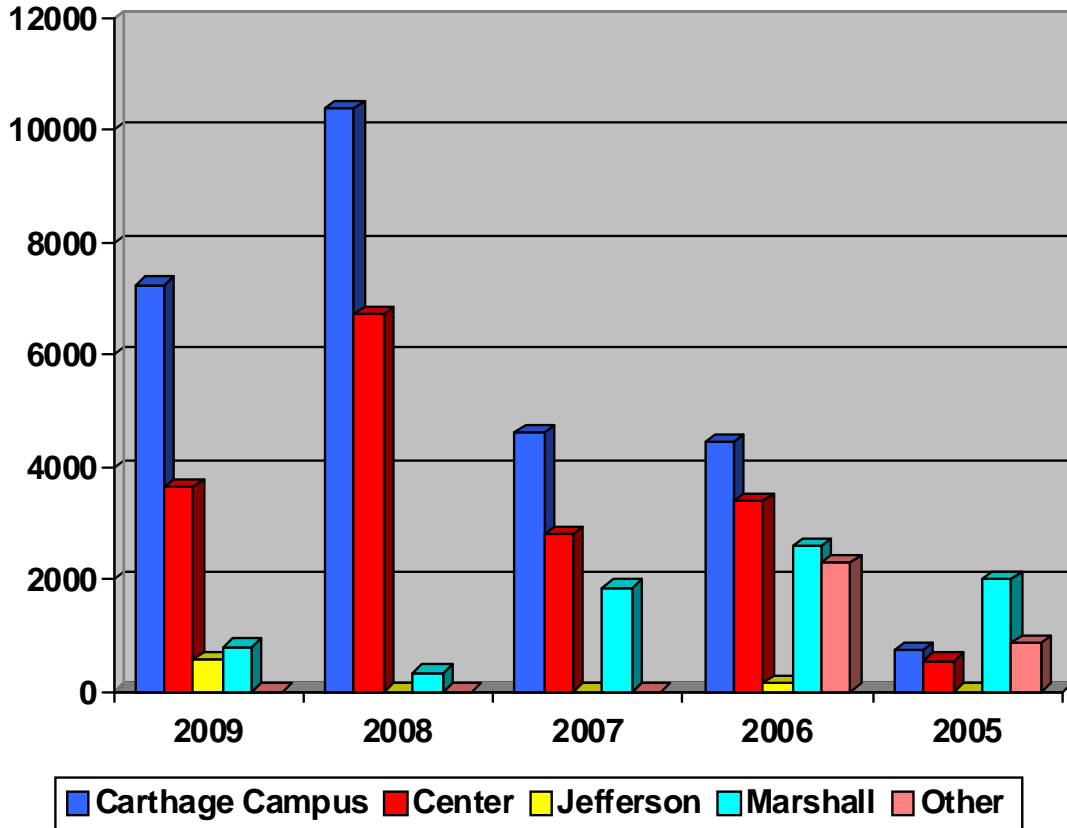
Academic & Career / Technical	2009	2008	2007	2006	2005
Carthage Campus	359,696	342,400	336,112	344,432	361,344
Panola County High Schools	2,816	1,952	1,680	0	0
Marshall Center	15,456	14,352	9,952	12,480	9,456
Harrison County High Schools	816	1,008	1,680	480	432
Jefferson High School	1,488	1,344	1,104	1,008	1,152
SCC and SRTC	59,904	58,688	56,816	44,880	48,160*
Shelby County High Schools	11,840	8,192	6,944	6,288	4,368**
Garrison High School	1,680	640	0	480	0
Non-funded (three-peats, Barksdale PE only and other non-reported, audits)	(2,656)	(2,784)	(3,472)	(2,848)	(2,992)
Total Off-Campus	94,000	86,176	78,176	65,808	63,808
Total Semester Length CH (Includes Non-funded)	453,696	428,576	414,288	410,048	424,912

For all five years, the non-funded (repeats and non-reported) have been counted in their respective categories and have been included in the totals and should not be added again.

*Center High School is included in this category.

**Center High School is excluded from this category and is counted in the SCC and SRTC category.

**Continuing Education: Five Year Trend of
Fall Contact Hours by Campus**

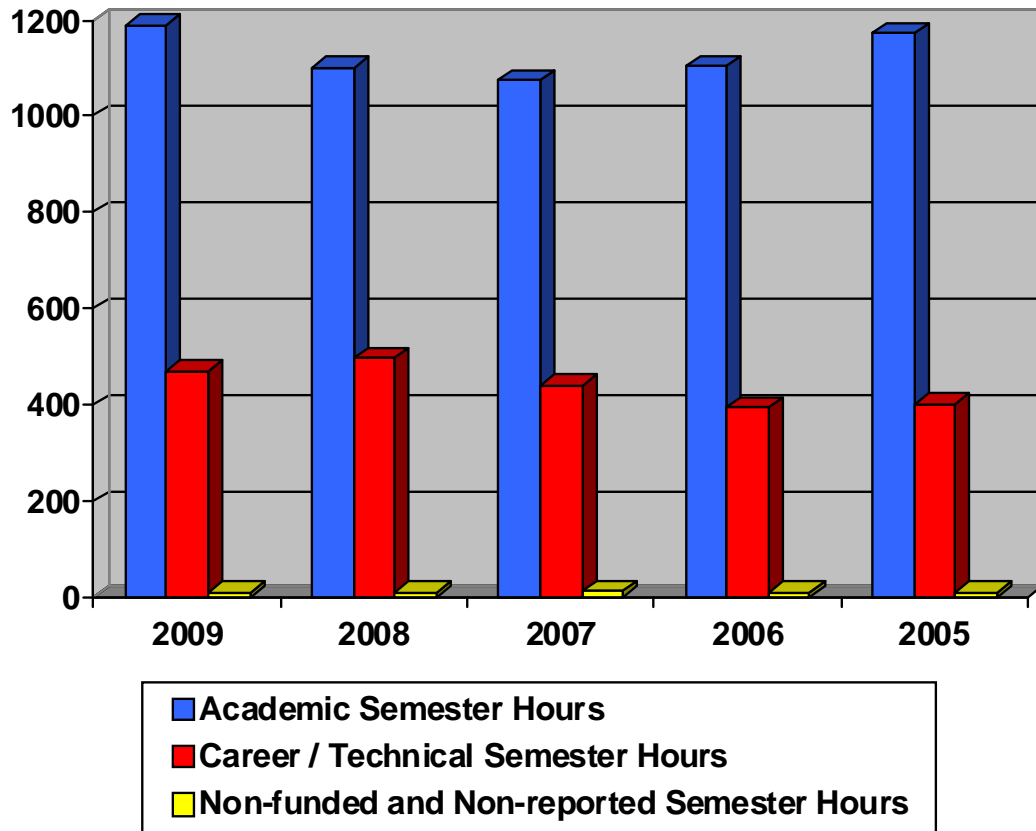


Continuing Education	2009	2008	2007	2006	2005
Carthage	7,245	10,386	4,611	4,447	736
Center	3,664	6,708	2,822	3,400	547
Jefferson	560	0	0	136	0
Marshall	800	336	1,856	2,593	1,986
Other	0	0	0	2,314	880
Total Continuing Education	12,269	17,430	9,289	12,890	4,149

Fall Contact Hour Summary	2009	2008	2007	2006	2005
Total Semester Length	453,696	428,576	414,288	410,048	424,912
Total Continuing Education	12,269	17,430	9,289	12,890	4,149
Total Unfunded (3-peats and Barksdale)	(2,656)	(2,784)	(3,472)	(3040)	(2,992)
Total Funded *	463,309	443,222	420,105	419,898	426,069

* Some contact hours are not funded by the state due to repeated courses.

Five Year Trend Fall Credit



Academic / Career and Technical Full-Time Equivalent (FTE)

Full Time Equivalent	2009	2008	2007	2006	2005
Academic Semester Hours	1189	1102	1075	1103	1173
Career / Technical Semester Hours	471	498	442	395	402
Non-funded and Non-reported Semester Hours	12*	12*	14*	12*	12*
Total FTE	1672	1612	1531	1510	1587

* Some semester hours are not funded by the state due to repeated courses.

Panola College: Programs Offered 2009-2010

Academic Degree Programs

Associate of Arts
Associate of Arts - Teaching
Associate of Science

Technical Degree Programs

Associate of Applied Science – Computer Information Technology
Associate of Applied Science – General Business
Associate of Applied Science – Health Information Technology/Technician
Associate of Applied Science – Industrial Technology Specialist
Associate of Applied Science – Nursing (Leading to RN Licensure)
Associate of Applied Science – Occupational Therapy Assistant
Associate of Applied Science – Office Professional
Associate of Applied Science – Office Professional (Legal Option)
Associate of Applied Science – Office Professional (Medical Option)
Associate of Applied Science – Petroleum Technology

Technical Certificate Programs

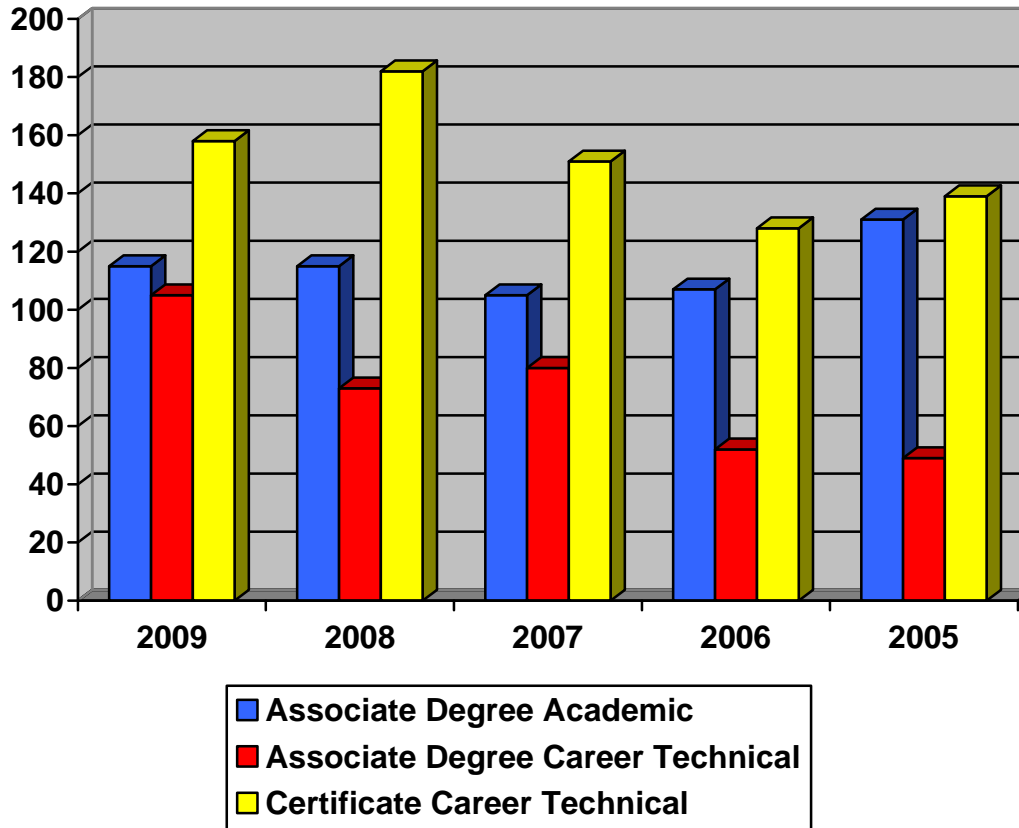
Computer Information Technology Certificates
 Digital Media Design and Development
 Digital Media Technical Support
 Game and Simulation Technology
 Microcomputer Software Operator
 Microcomputer Support Specialist
Cosmetology Certificates
 Facial/Esthetic Technology
 Instructor Training
 Nail Technology
 Operator
General Business Certificate
Health Information Technology Certificates
 Medical Office Assistant
 Medical Coding Technician
Industrial Technology Specialist Certificates
 Electrical Specialist
 Industrial Technology Specialist
 Industrial Technology Support
Nursing - Vocational (Leading to LVN)
Office Professional Certificates
 Administrative Assistant
 General Office
 Medical Office Management
Petroleum Technology Training Certificates - Tech I, II, III, and IV
Productivity Software Marketable Skills Certificate
Welding Certificate

Fall 2009 Enrollment by Declared Major Field of Study

Curriculum	Total
A D Nursing	527
Agriculture, General	20
Architecture	10
Art, General	7
Biology, General	19
Business and Management	76
Chemistry, General	1
Computer Information Technology	16
Computer Science	18
Cosmetology	50
Criminology	38
Drama / Theater Arts	28
Education, General	103
Electrical Specialist	8
Engineering	3
English Language and Literature	12
Environmental Technology	1
Facial Specialist	9
Foreign Languages & Literatures	2
General Business	24
General Business (1 year certificate)	15
General Studies	464
Health Information Technology	20
Health Professions / Related	46
Health / Medical Assistants	9
History, General	12
Industrial Technology	7
Industrial Technology Specialist	4
Industrial Technology Support	3
Journalism / Communications	11
Liberal Arts / Sciences	6
Mathematics	5
Medical Administrative Assistant / Secretary	8
Medical Coding	19

Curriculum	Total
Medical Transcription Technology	3
Microcomputer Software	1
Microcomputer Support Specialist	1
Music, General	33
Nail Technician	1
Occupational Therapy Assisting	133
Office Specialist	4
Office Systems Technology	11
Petroleum Technology	44
Petroleum Technology I	19
Petroleum Technology II	1
Petroleum Technology IV	1
Phys. Ed. - Teaching and Coach	26
Physics, General	2
Political Science and Govt., Gen.	1
Pre-Dentistry Studies	12
Pre-Law	11
Pre-Pharmacy Studies	9
Pre-Veterinary Studies	8
Psychology, General	27
Refrigeration Specialist	2
Social Work	2
Sociology	13
Speech and Rhetorical Studies	5
Teaching, 4 – 8	13
Vocational Nursing	75
Welding	45
Welding Specialist	7
Total	2111

Five Year Trend
Total Number of Degrees and Certificates Awarded

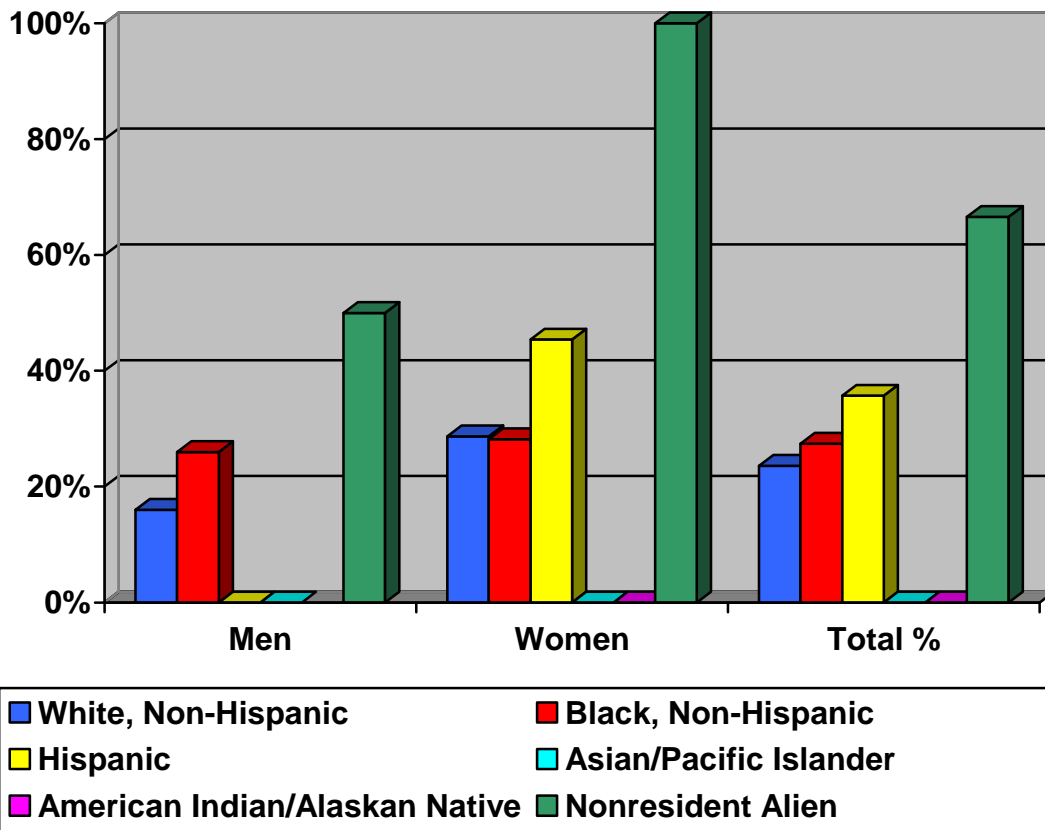


Degree/Certificate	2009	2008	2007	2006	2005
Associate Degree Academic	115	115	105	107	131
Associate Degree Career Tech	105	73	80	52	49
Certificate Career Technical	158	182	151	128	139
Total	378	370	336	287	319
Core Completers	130	125	105	109	111
Field of Study Completers	18	23	6	11	6
Total Completers	526	518	447	407	436

**Percent of First Time in College, Full-time Students
Who Entered in Fall 2006 (Cohort 2006) and
Completed or Transferred-out by Fall 2009**

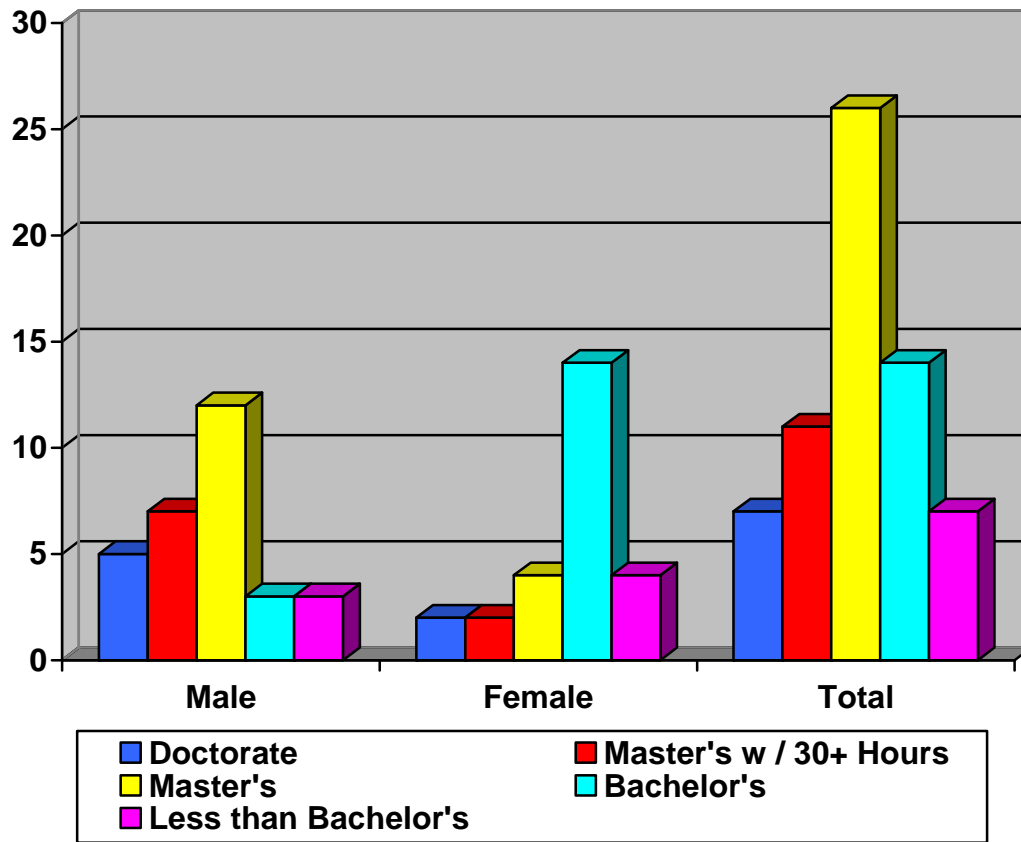
Ethnic Group	Men	Women	Total %	Transfer-out
% of Ethnic Group	% of Group Completing by 2009	% of Group Completing by 2009	% of Group Completing by 2009	% Who Transfer to Another Institution by 2009
White, Non-Hispanic	16%	29%	23%	20%
Black, Non-Hispanic	26%	28%	27%	21%
Hispanic	< 0.5%	45%	36%	21%
Asian/Pacific Islander	< 0.5%	< 0.5%	< 0.5%	33%
American Indian/ Alaskan Native	NA	< 0.5%	< 0.5 %	< 0.5%
Non-resident Alien	50%	100%	67%	17%
Total % Completing or Transferring-out	19%	30%	25%	20%

Percentage of Fall 2006 Cohort Who Completed* by Fall 2009



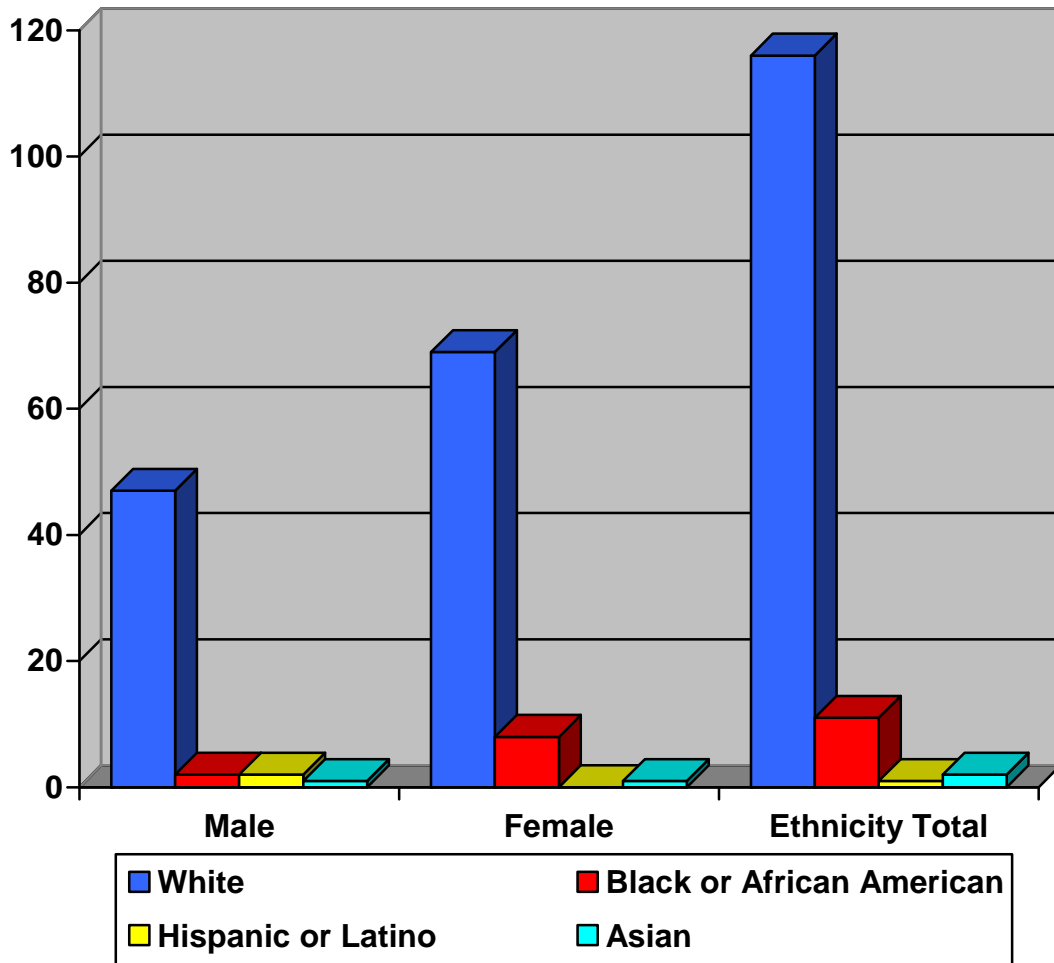
* Completers include students who earn a one or two year certificate, and students earning an Associate's degree.

Number of Full-time Faculty By Degree and Gender (Fall 2009)



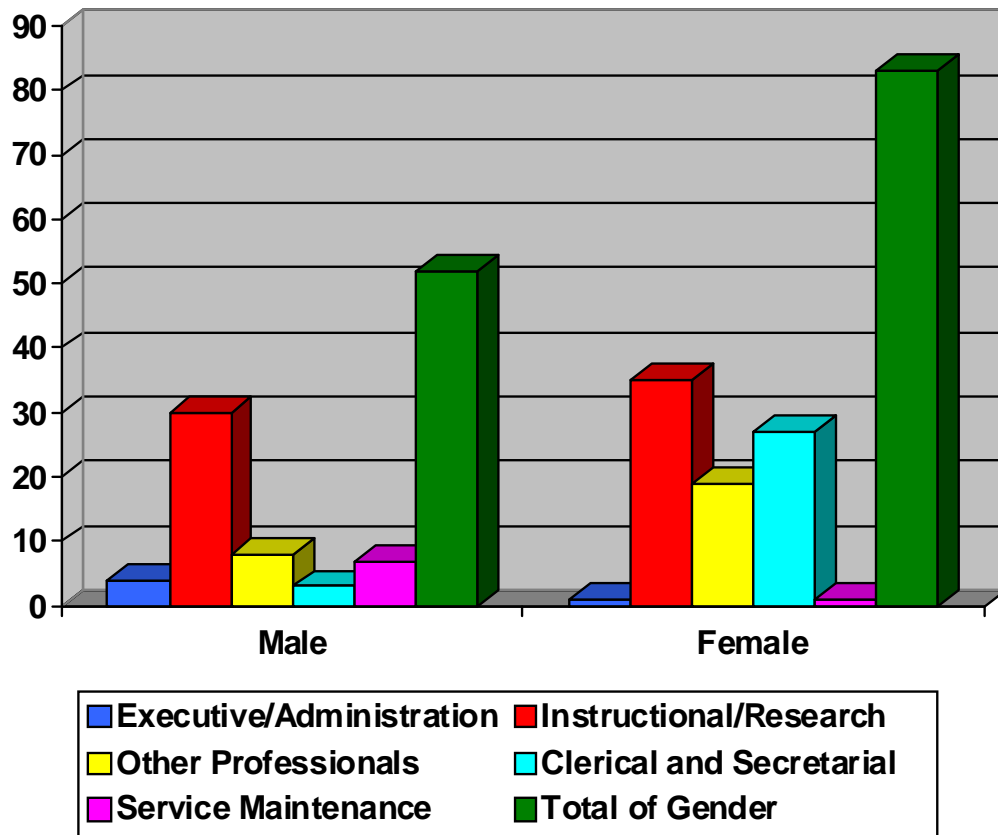
Degree	Male	Female	Total
Doctorate	5	2	7
Master's w / 30+ Hours	7	4	11
Master's	12	14	26
Bachelor's	3	11	14
Less than Bachelor's	3	4	7
Totals	30	35	65

Full-time Employees By Ethnicity and Gender (Fall 2009)



Ethnic Group	Male	Female	Total
White/Non-Hispanic	48	73	121
Black or African American	2	9	11
Hispanic or Latino	1	0	1
Asian	1	1	2
Total	52	83	135

Full-time Employees By Activity and Gender (Fall 2009)

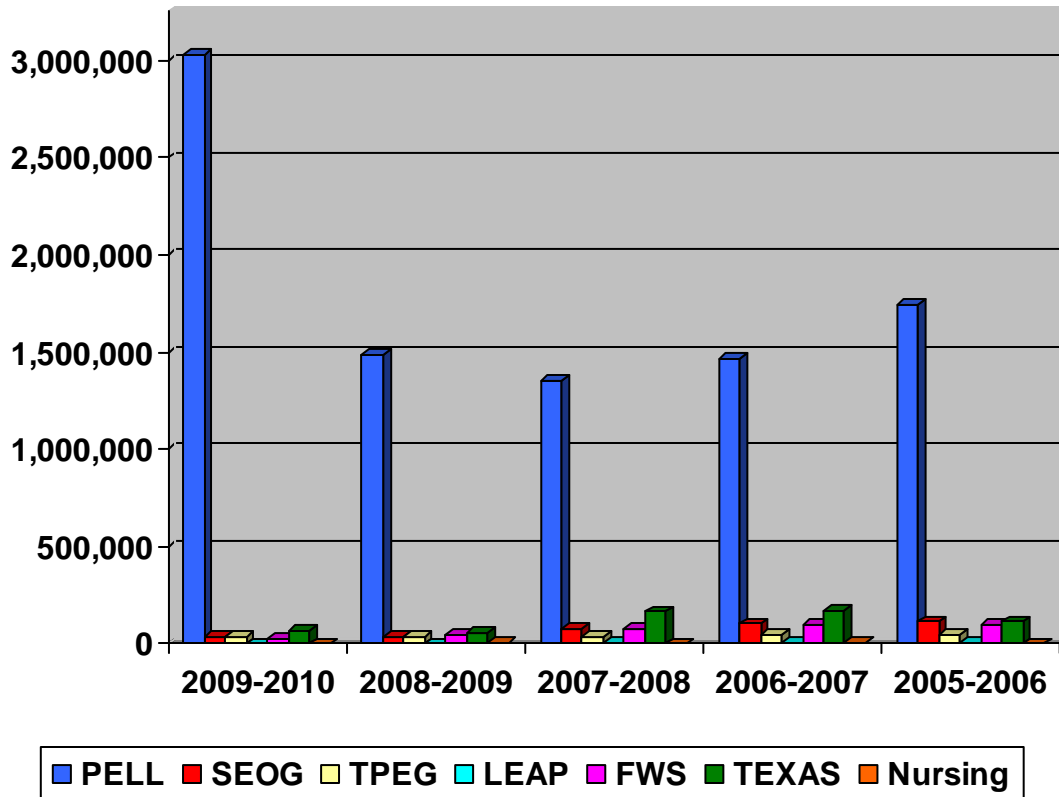


Activity	Male	Female	Total
Executive/Administration	4	1	5
Instructional/Research	30	35	65
Other Professionals	8	19	27
Clerical and Secretarial	3	27	30
Service Maintenance	7	1	8
Total	52	83	135

Revenues, Expenses, and Changes in Net Assets
September 1, 2008 – August 31, 2009

Operating Revenues	2008-2009	Prior Year
Tuition and Fees	2,335,955	2,247,922
Federal Grants and Contracts	427,660	473,503
State Grants and Contracts	261,246	274,038
Non-Government Grants and Contracts	1,446	925
Sales & Service of Educational Activities	142,692	157,976
Auxiliary Enterprises	1,400,158	1,161,246
Other Operating Revenues	303,884	371,080
Total Operating Revenues	4,873,041	4,686,690
Operating Expenses		
Instruction	6,009,005	5,652,081
Public Service	300,413	407,763
Academic Support	2,249,916	1,775,535
Student Services	1,121,788	1,122,024
Institutional Support	1,808,037	1,747,027
Operation and Maintenance of Plant	1,638,471	1,486,461
Scholarships and Fellowships	962,848	736,539
Auxiliary Enterprises	1,712,714	1,652,661
Depreciation	636,589	695,839
Total Operating Expenses	16,439,781	15,275,930
Operating Income Loss	-11,566,740	-10,589,240
Non-Operating Revenues:		
State Appropriations - General Revenue	4,994,716	4,973,753
Ad-valorem Taxes for Current Operation	5,157,869	4,624,730
Federal Revenue, Non Operating	2,468,133	1,815,907
Gifts	665,907	720,568
Investment Income	291,714	443,378
Royalty Income	47,292	58,763
Interest on Capital Related Debt	-256,390	-215,715
Loss of Disposition of Capital Assets	0	0
Net Non-Operating Revenues	13,369,241	12,421,384
Net Assets		
Net Assets – Beginning of Year	14,865,123	13,032,979
Net Assets – End of Year	16,667,624	14,865,123
Increase in Net Assets	1,802,501	1,832,144

**Five Year Trend
Need-Based Aid Received by Students**



Program	2009-2010	2008-2009	2007-2008	2006-2007	2005- 2006
PELL	3,025,372	1,488,500	1,354,442	* 1,465,000	* 1,740,000
SEOG	35,670	36,859	75,330	105,518	114,537
TPEG	40,000	40,000	38,043	47,000	47,000
LEAP	2,600	2,622	6,593	7,234	7,552
FWS	25,000	45,133	76,224	95,940	100,000
TEXAS	67,810	58,820	166,080	165,580	115,570
Nursing	736	2,801	591	4,077	2,315
TOTAL	3,197,188	1,674,735	1,717,303	1,892,349	2,126,974

Grants:

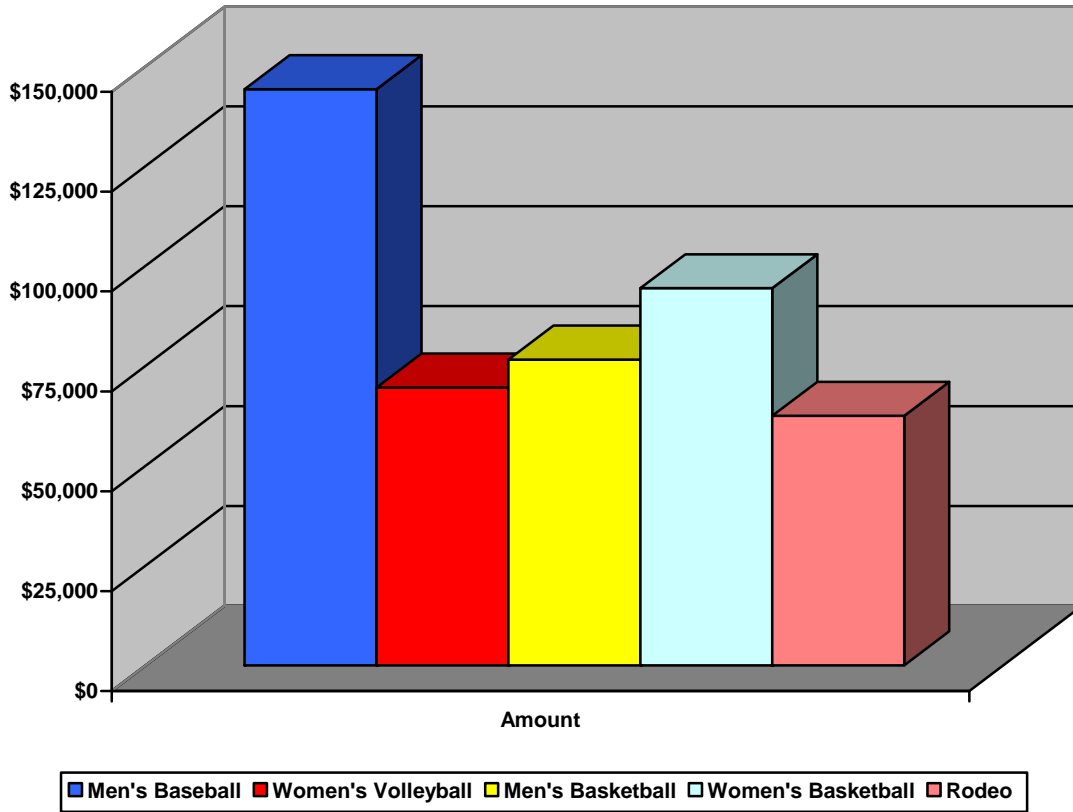
- PELL**
- SEOG** Supplemental Educational Opportunity Grant
- LEAP** Leveraging Educational Assistance Partnership (form erly SSIG)
- TEXAS** Toward Excellence, Access, and Success Grant
- TPEG** Texas Public Edu Cational Grant

Work Study:

- FWS** Federal Work Study

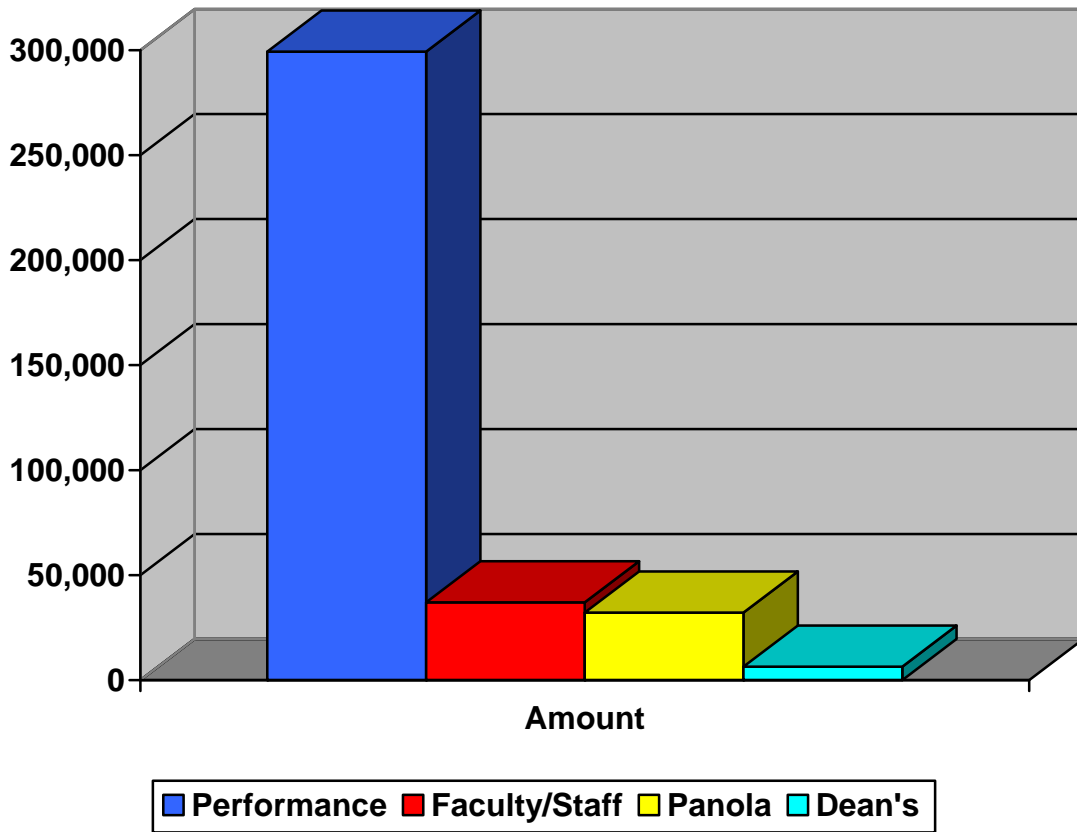
* estimated

Athletic Scholarships (2009 - 2010)



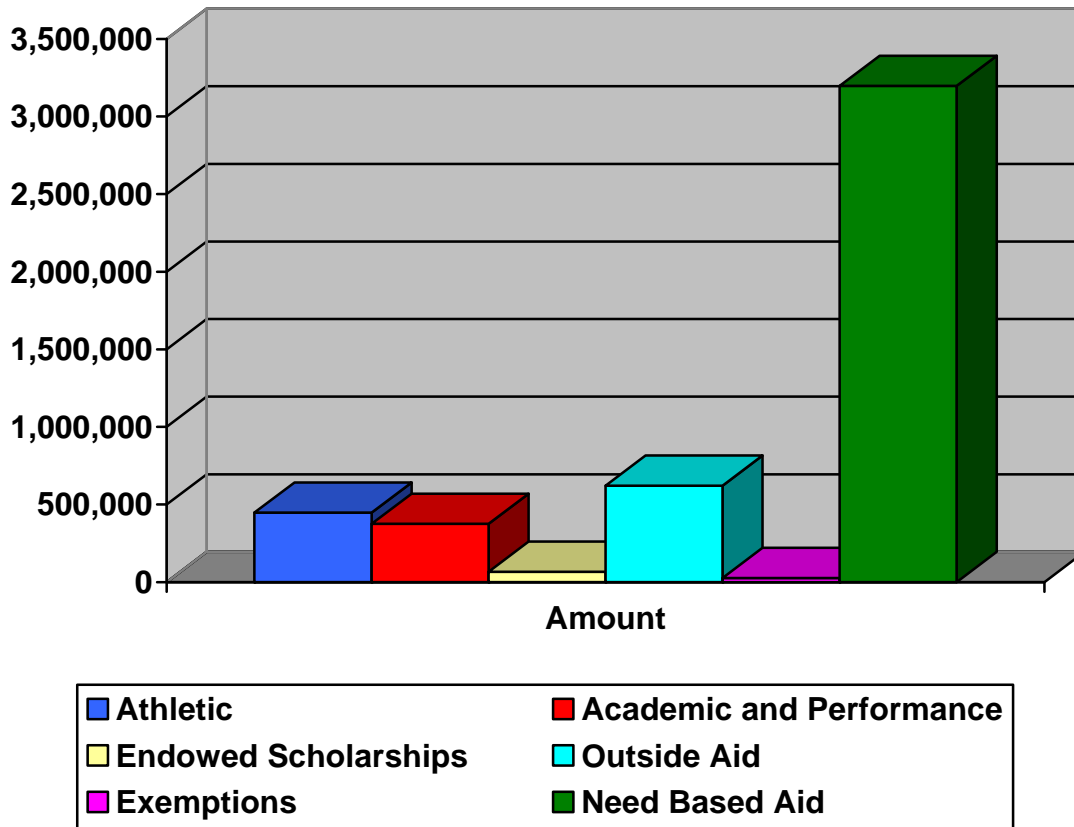
Program	Amount	% Increase/Decrease From Previous Year
Men's Baseball	144,208	17.7%
Women's Volleyball	69,532	5.7%
Men's Basketball	76560	- 7.7%
Women's Basketball	94,400	- 1.4%
Rodeo	62,470	11.5%
TOTAL	\$ 447,170	3.8%

Academic/Performance Scholarships (2009 - 2010)



Program	Amount	% Increase/Decrease From Previous Year
Performance:		
Art	2180	-73%
Band	117,468	-16%
Choir	56,542	-19%
Drama	111,023	8%
Journalism	12,117	12%
Total Performance	\$ 299,330	-10%
Faculty/Staff	37,081	-6%
Panola	32,181	5%
Dean's	6,421	-28%
TOTAL	\$ 375,013	-9%

Summary of Financial Aid/Scholarships (2009 - 2010)

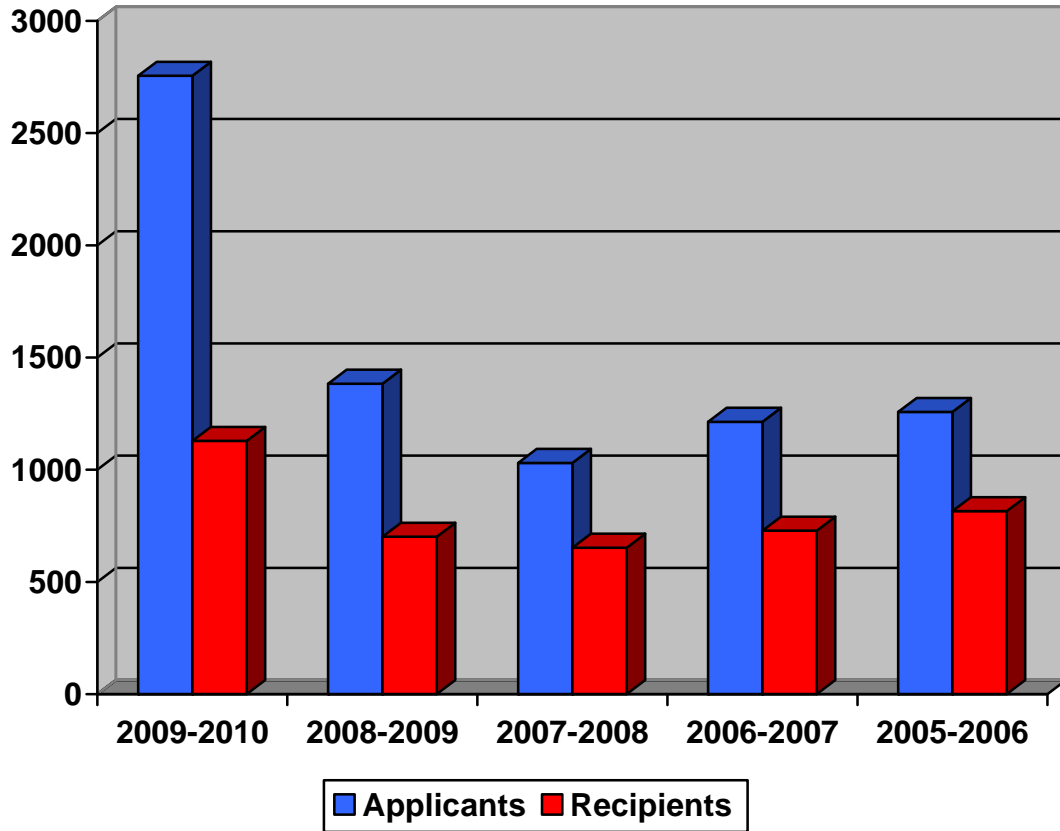


Program	Amount	% Increase/Decrease From Previous Year
Athletic	447,171	4%
Academic and Performance	375,013	-9%
Endowed Scholarships	66,318	18%
Outside Aid *	621,379	42%
Exemptions **	26,534	-36%
Need Based Aid	3,197,188	90%
TOTAL	\$ 4,733,603	55%

* any scholarship or grant not awarded by Panola College

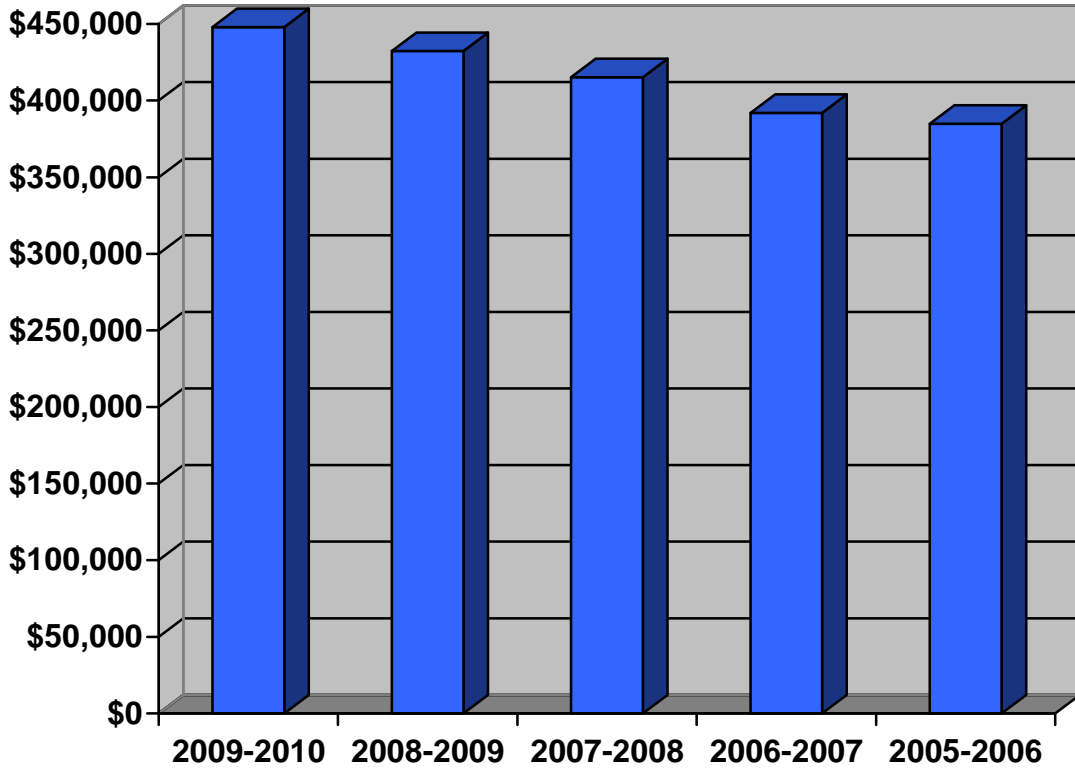
** exemptions are offered by the state for students in special populations

**Five Year Trend
Number of Financial Aid Applicants and Recipients
of Federal or State Aid**



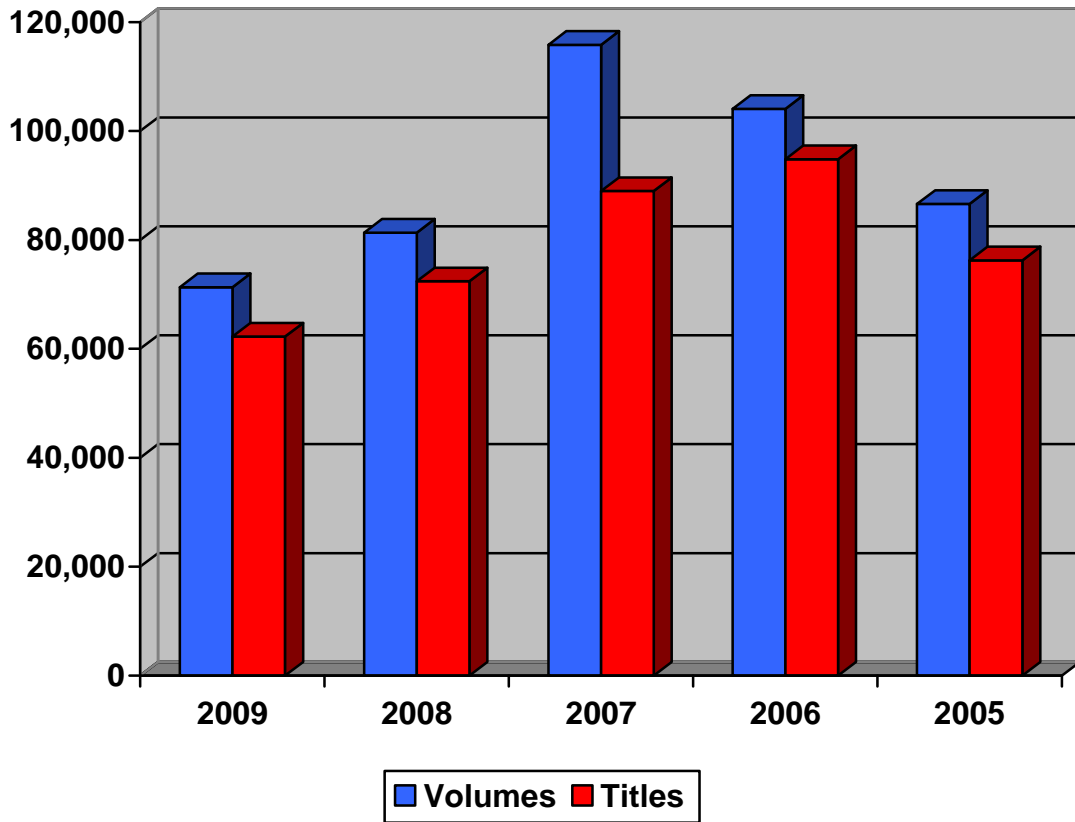
	2009-2010	2008-2009	2007-2008	2006-2007	2005-2006
Applicants	2755	1386	1030	1213	1257
Recipients	1128	701	652	728	821
Percent	41%	51%	63%	60%	65%

Library Budget: 2005-2010



Year	2009-2010	2008-2009	2007-2008	2006-2007	2005-2006
Budget	\$447,946	\$432,351	\$415,340	\$392,062	\$384,903

Library Materials: 2005 - 2009

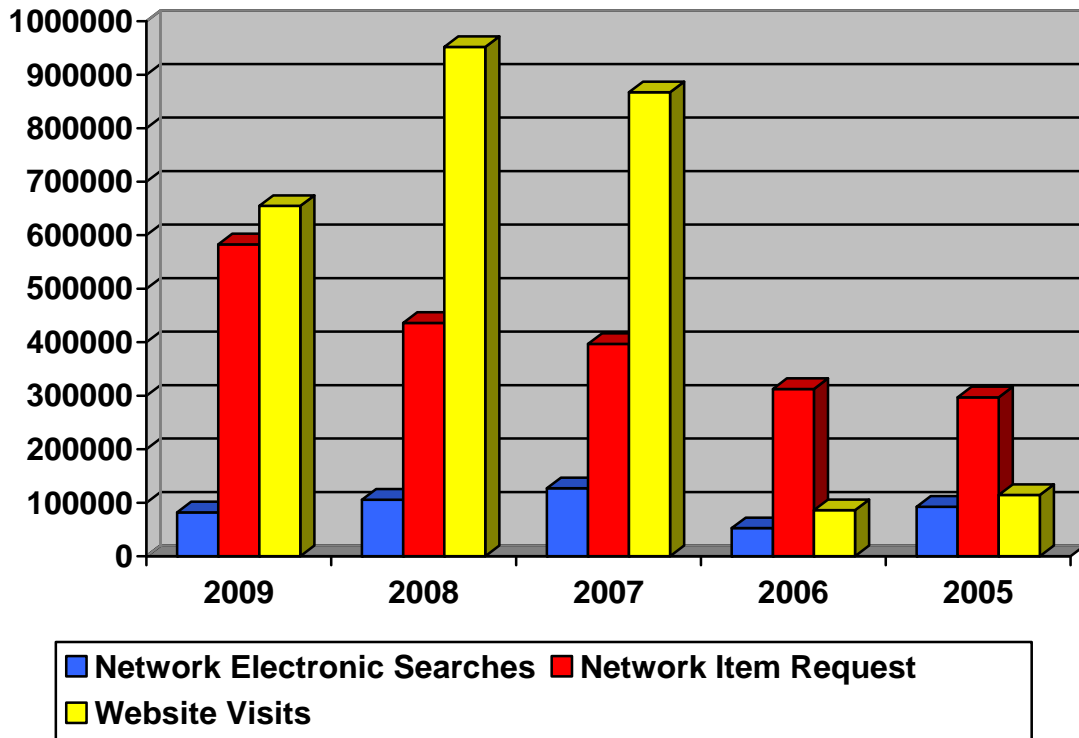


	2009	2008	2007	2006	2005
Volumes	71,322*	81,337*	115,856	104,086	85,635
Titles	62,260*	72,410*	88,992	94,834	76,270

* The library collection has been reduced due to storage issues during the renovation project.

Library Services: 2005 - 2009

Databases Usage



Databases Usage	2009	2008	2007	2006	2005
Network Electronic Searches	82,153	105,703	127,115	52,336	92,619
Network Item Requests	582,894	435,967	396,716	312,665	297,051
Library Website Page Hits	654,760	951,754	867,103	86,228	114,615
Circulation Transactions	2009	2008	2007	2006	2005
General Collection	3,184	4,128	3,917	4,424	5,255
Reserve Collection	2,026	5,179	1,561	7,514	2,134
Interlibrary Loans	2009	2008	2007	2006	2005
Lending	65	85	58	86	43
Borrowing	216	204	166	257	178
Information Services to Groups	2009	2008	2007	2006	2005
Presentations	19	36	44	42	49
People Served	397	879	618	631	387