

Panola College



Fact Book

2008-2009

Table of Contents

Acknowledgments	4
About Panola College.....	5
Statement of Vision.....	6
Mission Statement	6
Strategic Planning Objectives 2009 - 2010 Linked to Institutional Goals 2005 - 2010..	6
Administrative Organizational Chart	10
Academic and Career / Technical Instruction Organizational Chart	11
Student Services Department Organizational Chart.....	12
Fiscal Services Organizational Chart	13
Harrison County	14
Geography	14
Population Statistics.....	14
Marion County	16
Geography.....	16
Population Statistics.....	16
Panola County	18
Geography.....	18
Population Statistics.....	18
Shelby County	20
Geography.....	20
Population Statistics.....	20
Panola College District Demographics	22
Five Year Fall / Spring Enrollment Report	24
Five Year Credit Enrollment By Full-time/Part-time Status Fall Semesters	25
Five Year Fall Credit Enrollment By Tuition Status and Geographical Distribution..	26
Five Year Trend of Credit Students By Ethnicity Fall Semesters.....	27
Five Year Trend of Credit Students by Gender Fall Semesters	28
Fall 2008 Credit Students Ethnic/Gender Breakdown	29
Five Year Fall Enrollment By Level.....	30
Five Year Trend of Fall Student Headcount Breakdown By Campus	31
Fall Distance Learning Duplicated Headcount Breakdown By Mode of Delivery.....	32
Definition of Distance Learning Modes of Delivery	33
Five Year Trend for Fall Distance Learning Enrollment Unduplicated Head Count ...	34
Five Year Trend Fall Student Distribution.....	35
Six Year Trend of Fall Contact Hours By Program Area:	
Academic and Career / Technical	36
Fall Contact Hours By Campus: Academic and Career / Technical	37
Continuing Education: Five Year Trend of Fall Contact Hours By Campus.....	38
Five Year Trend Fall Credit Academic / Career and Technical Full-Time Equivalent (FTE*)	39
Panola College: Programs Offered.....	40
Fall 2008 Enrollment by Declared Major Field of Study.....	41
Five Year Trend Total Number of Degrees and Certificates Awarded.....	43
Percent of First Time, Full-time College Students Who Entered Fall 2005 (Cohort 2005) and Completed or Transferred-out by Fall 2008.....	44
Percentage of the Fall 2005 Cohort Who Completed by Fall 2008	44
Number of Full-time Faculty By Degree and Gender (Fall 2008).....	45

Full-time Employees By Ethnicity and Gender (Fall 2008)	46
Full-time Employees By Activity and Gender (Fall 2008)	47
Revenues, Expenses, and Changes in Net Assets	
September 1, 2007 – August 31, 2008	48
Five Year Trend Need-Based Aid Received by Students	49
Athletic Scholarships (2008 - 2009).....	50
Academic/Performance Scholarships (2008 - 2009).....	51
Summary of Financial Aid/Scholarships (2008 - 2009).....	52
Five Year Trend Number of Financial Aid Applicants and Recipients of Federal or State Aid.....	53
Library Budget: 2004-2009	54
Library Materials: 2004 - 2008	55
Library Services: 2004 - 2008.....	56



Introduction

Acknowledgments

This edition of the Panola College Fact Book reflects the diversity of the institution and provides a convenient and authoritative source of information about the college. Without the aid of the Offices of the President, the Vice President of Instruction, Fiscal Affairs, Financial Aid, the Registrar, the Director of Administrative Services, the Executive Director of Institutional Advancement, and the M. P. Baker Library, the compilation of the data in the book would not have been possible.

Chris Blair

Chris Blair

Director of Institutional Research / Math Instructor
Panola College
1109 West Panola
Carthage, TX 75633
903-693-2075

About Panola College

Panola College is a comprehensive public community college serving the citizens of Harrison, Marion, Panola, and Shelby counties. Founded in 1947, Panola College has a rich tradition of helping students achieve their academic and personal goals

Enrollment at the College has grown from fewer than 100 students at the first registration in January of 1948 to its highest enrollment of 1,981 in the fall of 2008. The College provides many services that enrich the lives of individuals in the region. The services the College offers have expanded greatly to meet community needs, providing a wide range of educational and training opportunities to citizens of all ages.

Panola College offers courses through its main campus in Carthage and at centers in Marshall and Center, Texas. Panola College is also a leader in offering distance learning courses via the Internet and since 2003, has been listed by the Center for Digital Education as one of the top 10 tech-savvy community colleges in the nation.

Students can choose from a variety of technical programs that provide quick employment and career enhancement opportunities, or they can pursue a two-year associate degree and academic courses for transfer to a four-year university.

Panola College faculty members are constantly striving to offer students the courses they need in a format that is most convenient for them. A good example of this philosophy is the Online Flex Delivery Registered Nursing Program. It is designed to give students an opportunity to earn an associate degree in nursing through a non-traditional, flexible format with online classes and flexible clinical experiences. This innovative delivery system allows students to continue working while pursuing a degree in nursing. A program of this kind would not be possible without high caliber people who are constantly pushing the envelope.

An associate degree from Panola College is equivalent to the first two years of a four-year degree but at a fraction of the cost charged by State and private universities. Graduates transfer to a wide range of four-year institutions that include Texas A&M University, the University of Texas at Tyler, East Texas Baptist University, Stephen F. Austin State University, Louisiana State University and many others.

Statement of Vision

Panola College is committed to excellence in instructional programs, student services, service to the community, and leadership in economic development and cultural enrichment of the region.

Mission Statement

Panola College shapes its mission around the needs of the people within its service area. As a two-year public community institution, Panola College is dedicated to providing excellence in education for its constituents. The range of educational offerings, both electronic and face-to-face, includes university transfer programs, technical and workforce programs, developmental courses designed to increase academic proficiencies and continuing education to enrich lives and improve skills. Our aim is to help each student achieve his or her full potential and contribute to the further development of society.

Strategic Planning Objectives 2009 - 2010 Linked to Institutional Goals 2005 - 2010

Institutional Goal 1: Provide excellence in teaching and to develop and revise curricula to meet the needs of the community.

- 1.1 Award excellence in teaching
- 1.2 Develop leadership opportunities for faculty
- 1.3 Survey business and industry to determine instructional needs
- 1.4 Review developmental studies program
- 1.5 Review and revise programs periodically
- 1.6 Review and revise syllabi every two years
- 1.7 Explore service learning projects and instruction
- 1.8 Continue to develop QEP to get it approved for implementation
- 1.9 Continue to emphasize assessment of student learning

Institutional Goal 2: To maintain and refine support systems for enhancing student success.

- 2.1 Refine One-Stop Shop
- 2.2 Develop criteria and explore idea of Honors Award Program
- 2.3 Continue to refine first-year program
- 2.4 Expand tutoring process and evaluate
- 2.5 Review and expand student organizations and projects (field trips), community service partnerships
- 2.6 Develop opportunities for students/faculty/staff to interact
- 2.7 Provide transportation for fans to attend athletic away events
- 2.8 Increase employee participation in Panola College events
- 2.9 Target GED students for college enrollment (scholarship program)
- 2.10 Improve retention rate
- 2.11 Review TSI statement
- 2.12 Review and revise new student advising and orientation
- 2.13 Revise student handbook
- 2.14 Develop Master textbook list and send copy to Library
- 2.15 Provide work-study training and job postings

2.16 Investigate Federal Guaranteed Student Loans

Institutional Goal 3: To provide appropriate facilities and a quality and productive work, study, living and learning environment.

- 3.1 Improve dorm Internet access
- 3.2 Improve wireless hotspots
- 3.3 Continue to provide new, technology-equipped classrooms
- 3.4 Formalize a wellness program and include off-campus centers; enhance services for virtual students
- 3.5 Create partnerships for a swimming pool
- 3.6 Continue campus beautification projects
- 3.7 Continue to review safety protocol
- 3.8 Reconsider smoking policy
- 3.9 Develop facilities maintenance schedule

Institutional Goal 4: To maintain a strong commitment to excellence through professional development.

- 4.1 Continue to provide grant writing workshops on campus
- 4.2 Continue to provide leadership development for faculty/staff
- 4.3 Coordinate PC training to meet the college's diverse needs and write plan
- 4.4 Continue to establish partnerships for educational and professional development
- 4.5 Continue technology training through DL
- 4.6 Train Library staff to assist students in completing FASFA forms

Institutional Goal 5: To seek additional resources to support the College's mission.

- 5.1 Research and write a title grant
- 5.2 Conduct an annual campaign
- 5.3 Continue to raise funds through the Office of Institutional Advancement
- 5.4 Investigate Department of Labor grants
- 5.5 Investigate ABE Workforce Literacy options and partnerships

Institutional Goal 6: To distribute resources in a manner that is productive, efficient and consistent with the College's mission.

- 6.1 Review the budgeting process; workshops will be mandatory
- 6.2 Continue to set up summer programs

Institutional Goal 7: To provide College systems and practices that provide effective support and ensure public accountability.

- 7.1 Expand use of imaging system
- 7.2 Expand use of electronic forms for both completion and submission
- 7.3 Develop web reports
- 7.4 Develop new student evaluation systems
- 7.5 Explore possibility of using debit cards
- 7.6 Explore possibility of installing ATM machine
- 7.7 Expand instructors' use of WebCT training
- 7.8 Update servers and ensure adequate network and server efficiency

Institutional Goal 8: To support the College's commitment to expanded enrollment, access, equity and diversity.

- 8.1 Actively recruit people of diverse backgrounds
- 8.2 Expand enrollment and scholarship programs (creative use of scholarships)
- 8.3 Create and administer survey to examine scheduling of classes
- 8.4 Review recruitment practices
- 8.5 Explore possibility of Senior College

Institutional Goal 9: To provide leadership in the cultural and economic development of the College's service area.

- 9.1 Expand economic development through partnerships based on training funds
- 9.2 Get listing of economic development board lists
- 9.3 Offer fine and performing arts programs outside Panola County
- 9.4 Provide exhibit space (in new library)

Institutional Goal 10: To seek out and cultivate partnerships beneficial to Panola College.

- 10.1 Continue to develop and/or maintain relationships with ISDs and universities, government, and non-profit groups
- 10.2 Develop student health services through East Texas Medical Center
- 10.3 Continue partnerships with businesses and field training and financial support
- 10.4 Continue to develop distance learning course exchanges with other colleges

Panola College Board of Trustees

Mr. William Goolsby, Chair – 2010

Mr. Hal Palmer, Vice Chair – 2014

Mrs. Evelyn Sharp, Secretary – 2012

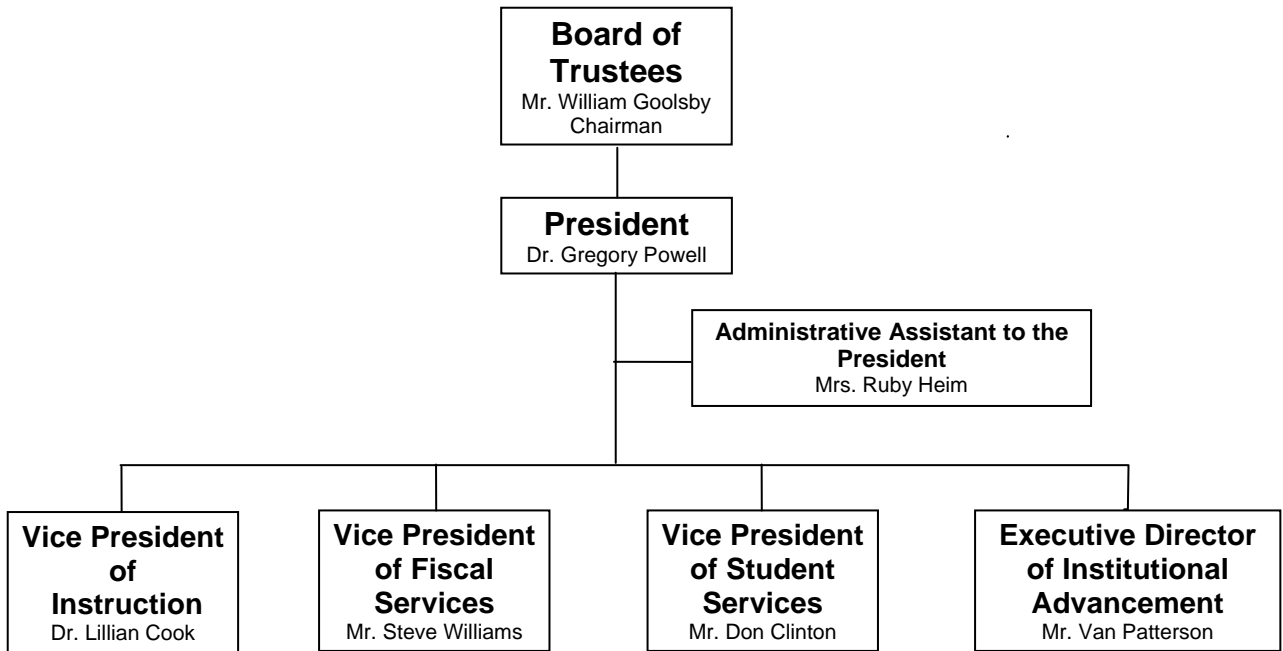
Mrs. Glendell Chadwick – 2014

Dr. Dennis Golden – 2010

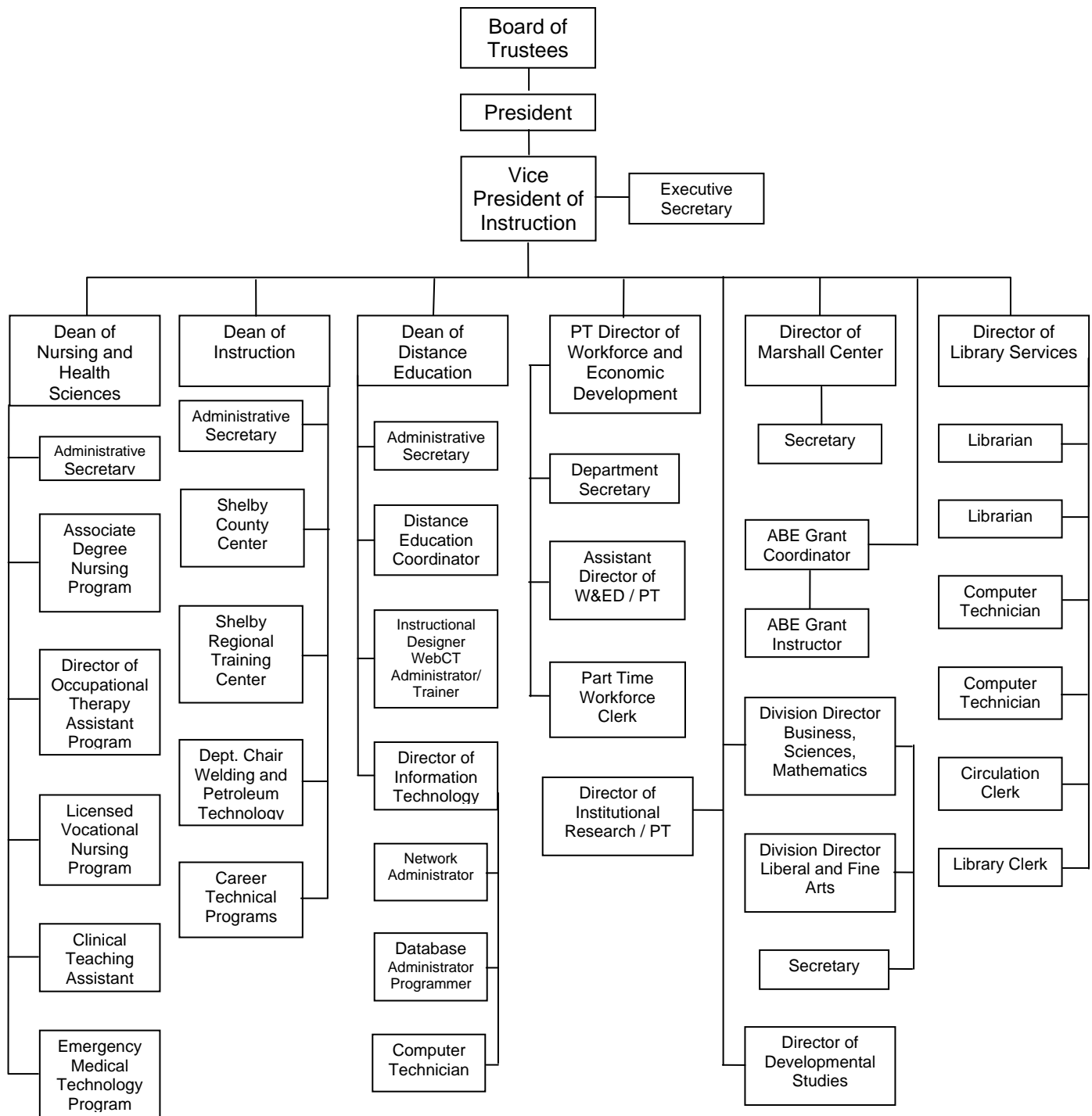
Mr. Bobby Phillips – 2010

Mr. Richard Thomas – 2012

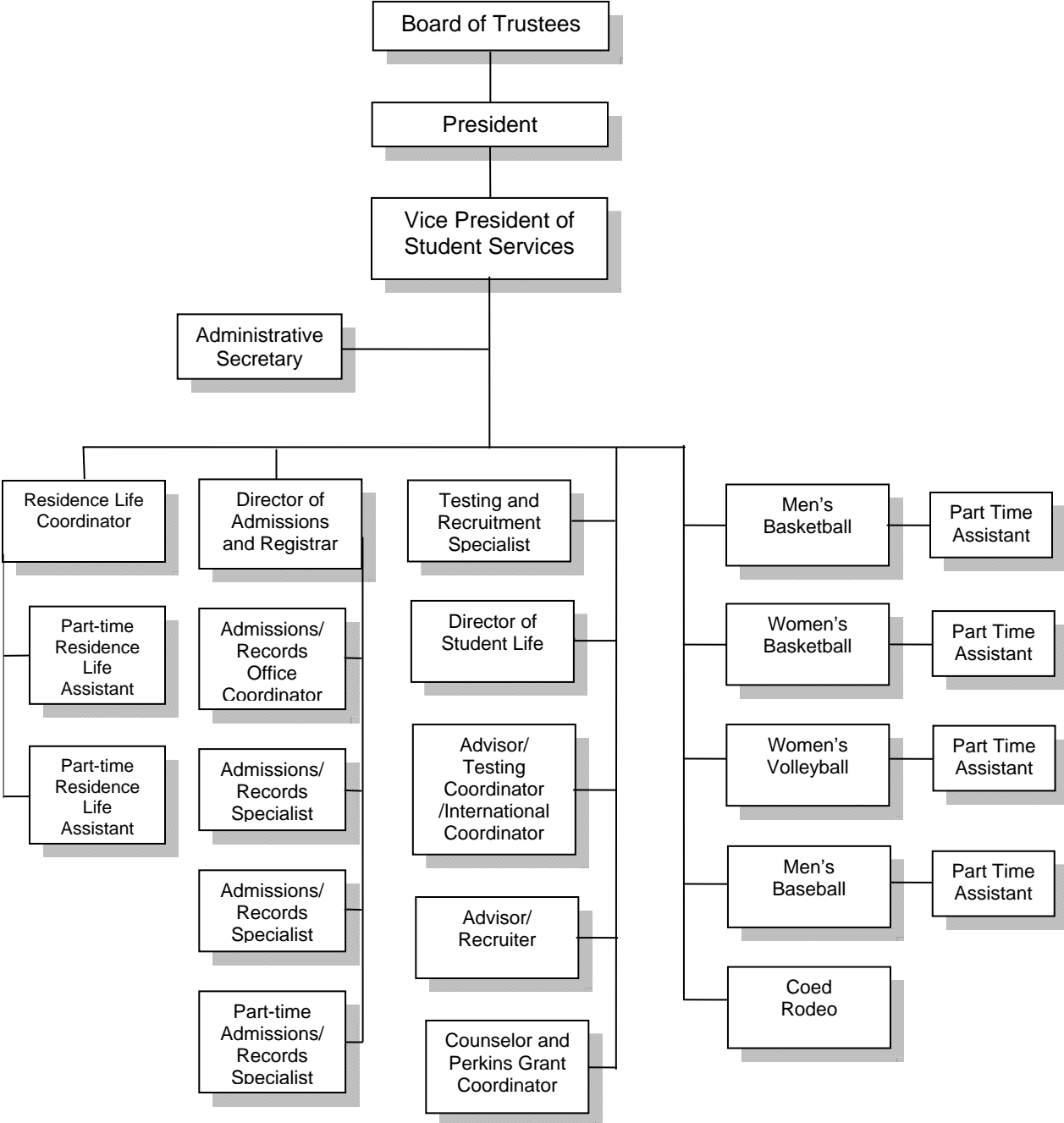
Administrative Organizational Chart



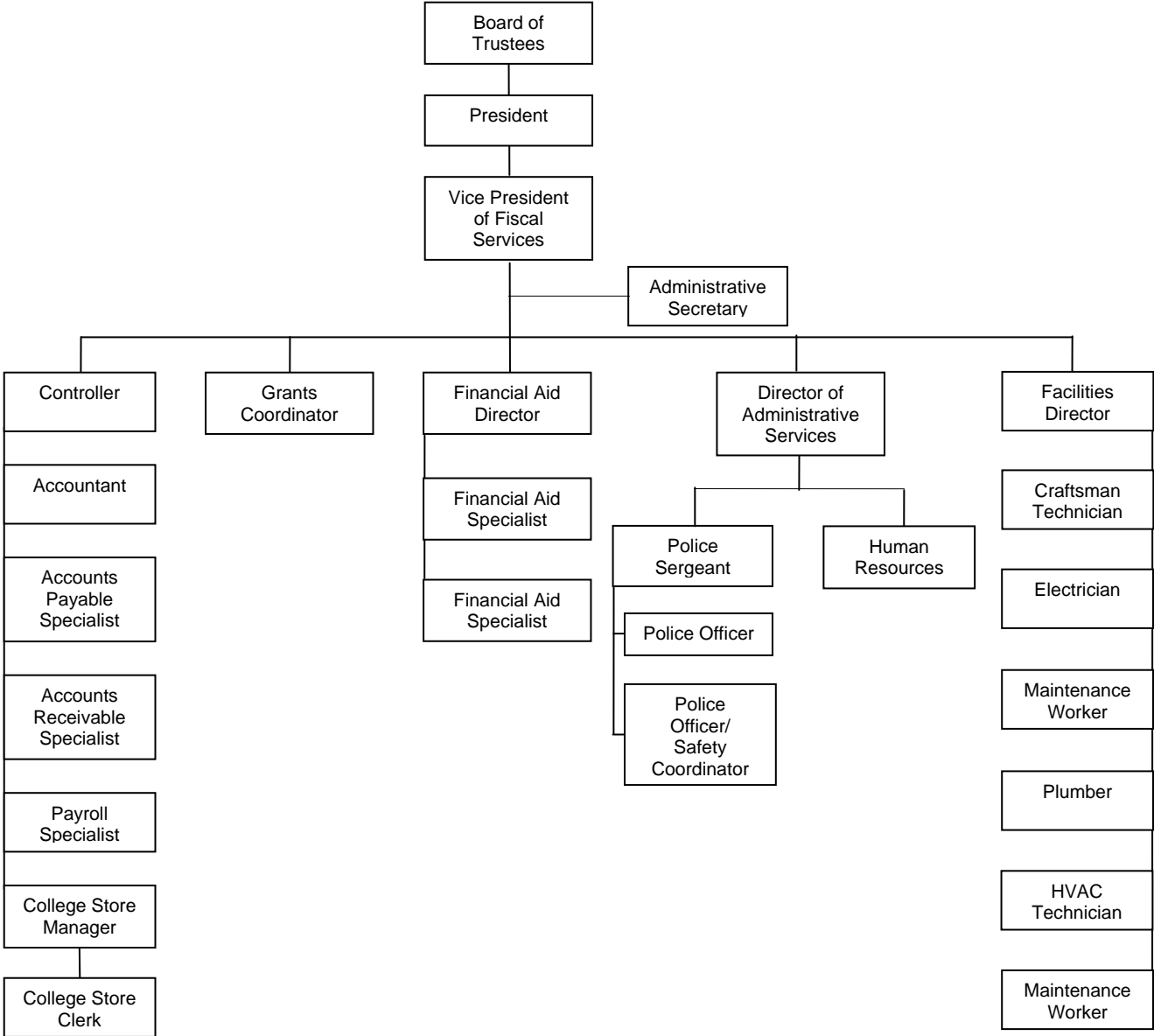
Academic and Career / Technical Instruction Organizational Chart



Student Services Department Organizational Chart



Fiscal Services Organizational Chart



Harrison County

Geography

The county of Harrison is the 49th largest in population of the 254 counties in Texas with an estimated population of 64,100 in July 2007.¹ Harrison County experienced a 2.2% increase in population since the 2000 census compared to the state increase of 14.6%. The county seat is Marshall (24,314) and Panola College's Marshall Center is housed in this city in the Marshall Mall. Other towns found within the county include Elysian Fields (300); Hallsville (3,059); Harleton (260); Karnack (775); Waskom (2,165); and part of Longview. Harrison County is a metro county which lies within the East Texas Workforce Planning region, administered by the Technology Partnership Organization.

The county consists of 898 square miles with a population density of 69.1 residents per square mile in 2000. The average density in Texas is 79.6 persons per square mile. The county is over half forested and includes the Sabine River and Caddo Lake.

Population Statistics

The Census Bureau estimates the county's race/ethnic distribution in 2007 to be:²

	<i>Harrison County</i>	<i>Texas</i>
White, non Hispanic	67.5%	47.9%
Black	22.5%	12.0%
Hispanic ³	8.3%	36.0%
Asian/Pacific Islander	0.7%	3.5%
Native American	0.4%	0.7%
Report 2 or more races	1.0%	1.2%

The 2007 estimates for Texas show a population composition according to age as follows:⁴

<i>Age</i>	<i>Harrison County</i>	<i>Texas</i>
0-4	6.3%	8.0%
5-18	19.7%	20.5%
19-29	15.8%	16.7%
30-44	12.6%	21.9%
45-64	27.3%	23.0%
65 plus	13.2%	9.8%

¹ July 1, 2007 population estimates for Texas counties and towns were obtained from the Texas State Data Center and Office of the State Demographer

² U. S. Census Bureau Texas County Quick Facts population estimates, July 2007

³ Hispanics may be of any race, so also are included in other applicable race categories. For this reason, the total percentage may be more than 100%

⁴ July, 2007 population estimates for Harrison County, Texas were obtained from the Texas State Data Center and Office of the State Demographer

If the population cohort 45 and over is higher than the state average, as it is in Harrison County, this suggests a stable, mature population comprised of mainly "empty-nesters," retirees and the aged. When the 30-44-age cohort is higher than the state average, this is a healthy economic situation since this group contains the greatest share of the productive labor force. This is not the case in Harrison County. Decreases over time in this group, especially when similar changes are not occurring statewide, can indicate a poor labor market.

Harrison County had about 23,087 households in 2000 according to the census. This represents an average of 2.62 persons per household. Statewide, there were 2.74 persons per household in 2000 with roughly 7.39 million Texas households. In 2007, an estimated 26% of Harrison County residents were children age 18 or under – these are our potential college students.

Local industry consists primarily of manufacturing, education, health and social services, and retail trade. According to the 2000 census, 59.8% of the over age 16 population of Harrison County is employed. This compares to the Texas rate of 63.6% for that age group. The median household income for Harrison County in 2007 was \$40,873, compared with a state median income of \$47,563. The annual unemployment rate in the county is 4.7% compared to 4.9% statewide (year 2008 data)⁵.

During 2008, the county-wide monthly average food stamp recipients were 7,414 people with an average of 232 receiving basic TANF and 5 receiving state TANF. During the first half of 2008, on average 8,229 people were Medicaid clients, including families and children.⁶ It has been estimated that 16.5% of Harrison County residents live below the poverty level, compared to 16.3% rate statewide.⁷

There are six independent school districts in the county: Elysian Fields, Hallsville, Harleton, Karnack, Marshall, and Waskom ISD with a grade 7-12 enrollment of 6,123 and an average drop out rate of 1.7% compared to the state dropout rate of 2.7%.⁸

Tracking graduates from FY 2007 shows that 45% of Elysian Fields High School graduates, 4% of Hallsville High School graduates, 20% of Marshall High School graduates, and 36% of Waskom High School graduates who were known to have enrolled in a public Texas college for fall 2007 enrolled in Panola College. Panola College information was not available from this source for Harleton or Karnack ISDs.⁹

⁵ Texas WorkForce Commission, Labor Market Information Department, 2008

⁶ Temporary Assistance for Needy Families, Food Stamp and Medicaid recipients, 2008 data from Texas Department of State Health Services

⁷ U. S. Census Bureau Texas County Quick Facts population estimates, July 2007

⁸ Texas Education Agency Secondary School Completion and Dropouts in Texas Public Schools, Supplemental County Data, 2006-2007

⁹ Texas Higher Education Coordinating Board publication; note this is not the percentage of the entire graduating class, but only those who were known to enroll in a Texas public college in fall 2007

Marion County

Geography

The county of Marion is the 185th largest in population of the 254 counties in Texas with an estimated population of 10,706 as of July 2007.¹⁰ The Marion County population decreased by an estimated 1.8% since the 2000 census, compared to the state rate of population growth of 14.6%. The county seat of Marion is Jefferson (2,019) which is by far the most populated city in the county. Marion County is a rural county which lies within the East Texas Workforce Planning region, administered by the Technology Partnership Organization.

The county consists of 381 square miles with a 2000 population density estimate of 28.7 residents per square mile. The average density in Texas was estimated to be 79.6 persons per square mile for that same time period. The county is three-quarters forested with pines and hardwoods. The watershed drains to Caddo Lake, Lake O' the Pines, and Cypress Bayou

Population Statistics

The Census Bureau estimates the county's race/ethnic distribution in 2007 to be:¹¹

	<i>Marion County</i>	<i>Texas</i>
White	72.1%	47.9%
Black	22.4%	12.0%
Hispanic ¹²	3.0%	36.0%
Asian/Pacific Islander	0.2%	3.5%
Native American	1.0%	0.7%
Report 2 or more races	1.7%	1.2%

The 2007 estimates for Texas show a population composition according to age as follows:¹³

<i>Age</i>	<i>Marion County</i>	<i>Texas</i>
0-4	5.2%	8.0%
5-18	16.1%	20.5%
19-29	11.4%	16.7%
30-44	14.6%	21.9%
45-64	30.6%	23.0%
65 plus	22.1%	9.8%

¹⁰ July 1, 2007 population estimates for Texas counties and towns were obtained from the Texas State Data Center and Office of the State Demographer

¹¹ U. S. Census Bureau Texas Quick Facts population estimates, 2007

¹² Hispanics may be of any race, so also are included in other applicable race categories. For this reason, the total percentage may be more than 100%

¹³ July, 2007 population estimates for Marion County, Texas were obtained from the Texas State Data Center and Office of the State Demographer

If the population cohort 45 and over is higher than the state average as it is in Marion County, this suggests a stable, mature population comprised of mainly "empty-nesters," retirees and the aged. When the 30-44-age cohort is higher than the state average, this is a healthy economic situation since this group contains the greatest share of the productive labor force. Decreases over time in this group as is the case in Marion County, especially when similar changes are not occurring statewide, can indicate a poor labor market.

Marion County had about 4,610 households in 2000 according to the census. This represents an average of 2.35 persons per household. Statewide, there were 2.82 persons per household in 2000 with roughly 7.39 million Texas households. In 2007, an estimated 21.3% of Marion County residents are children were age 18 or under– these are our potential college students.

Local industry consists primarily of tourism, timber and food processing. According to the 2000 census, 50.4% of the over age 16 population of Marion County is employed. This compares to the Texas rate of 63.6% for that age group. The median household income of Marion County in 2007 was \$31,043 compared to the state median household income of \$47,563. The annual unemployment rate in the county is 5.1% compared to 4.9% statewide (year 2008 data).¹⁴

During 2008, the county-wide monthly average food stamp recipients were 1,318 people with an average of 143 receiving basic TANF. During the first half of 2008, on average 1,305 people were Medicaid clients, including families and children.¹⁵ It has been estimated that 25.0% of Marion County residents live below the poverty level, compared to 16.3% rate statewide.¹⁶

There is one independent school district in the county: Jefferson ISD with a grade 7-12 enrollment of 664 students and an average drop out rate of 5.3% compared to the state dropout rate for the same age level of 2.7%.¹⁷

¹⁴ Texas WorkForce Commission, Labor Market Information Department, 2008

¹⁵ Temporary Assistance for Needy Families, Food Stamp and Medicaid recipients, 2008 data from Texas Department of State Health Services

¹⁶ U. S. Census Bureau Texas County Quick Facts population estimates, July 2007

¹⁷ Texas Education Agency Secondary School Completion and Dropouts in Texas Public Schools, Supplemental County Data, 2006-2007

Panola County

Geography

The county of Panola has the 104th largest in population of the 254 counties in Texas with an estimated population of 23,322 in July 2007.¹⁸ Panola County's population increased an estimated 1.1% since the 2000 census, compared to the state rate of population growth of 14.6%. The city of Carthage, with an estimated population of 6,954, is the county seat and is the site of Panola College. Other towns in the county include: Beckville (774); Clayton (79); DeBerry (191); Gary (318); Long Branch (181); Panola (296); and Tatum (1,172). Panola County is a rural county which lies within the East Texas Workforce service delivery area and the East Texas Quality Workforce Planning region, administered by the Technology Partnership Organization.

The county consists of 800 square miles with a 2000 population density 28.4 residents per square mile. The average density in Texas is 79.6 persons per square mile. Panola county is 60% forested, rolling plains that are broken by the Sabine River, Murvaul Creek and Toledo Bend Reservoir.

Population Statistics

The Census Bureau estimates the county's race/ethnic distribution in 2007 to be:¹⁹

	<i>Panola County</i>	<i>Texas</i>
White	72.1%	47.9%
Black	22.4%	12.0%
Hispanic ²⁰	3.0%	36.0%
Asian/Pacific Islander	0.2%	3.5%
Native American	1.0%	0.7%
Report 2 or more races	1.7%	1.2%

The 2007 estimates for Texas show a population composition according to age as follows:²¹

<i>Age</i>	<i>Panola County</i>	<i>Texas</i>
0-4	6.3%	8.0%
5-18	18.5%	20.5%
19-29	14.7%	16.7%
30-44	15.5%	21.9%
45-64	28.3%	23.0%
65 plus	16.7%	9.8%

¹⁸ July 1, 2007 population estimates for Texas counties and towns were obtained from the Texas State Data Center and Office of the State Demographer

¹⁹ U. S. Census Bureau Texas Quick Facts population estimates, 2007

²⁰ Hispanics may be of any race, so also are included in other applicable race categories. For this reason, the total percentage may be more than 100%

²¹ July, 2007 population estimates for Panola County, Texas were obtained from the Texas State Data Center and Office of the State Demographer

If the population cohort 45 and over is higher than the state average, as it is in Panola County, this suggests a stable, mature population comprised of mainly "empty-nesters," retirees and the aged. When the 30-44-age cohort is higher than the state average, this is a healthy economic situation since this group contains the greatest share of the productive labor force. Decreases over time in this group, as is the case with Panola County, especially when similar changes are not occurring statewide, can indicate a poor labor market.

Panola County had about 8,821 households in 2000 according to the census. This represents an average of 2.53 persons per household. Statewide, there were 2.82 persons per household in 2000 with roughly 7.39 million Texas households. In 2007, an estimated 24.8% of Panola County residents are children were age 18 or under— these are our potential college students.

Local industry consists primarily of gas processing, oil-field operations, agribusinesses, forestry, and other varied types of manufacturing. According to the 2000 census, 54.7% of the over age 16 population of Panola County is employed. This compares to the Texas rate of 63.6% for that age group. The median household income in 2007 was \$42,324 compared to the state median household income of \$47,563. The annual unemployment rate in the county is 3.9% compared to 4.9% statewide (year 2008 data).²²

During 2008, the county-wide monthly average food stamp recipients were 1,318 people with an average of 143 receiving basic TANF. During the first half of 2008, on average 2,660 people were Medicaid clients, including families and children.²³ It has been estimated that 13.7% of Panola County residents live below the poverty level, compared to 16.3% rate statewide.²⁴

There are three independent school districts and one charter school in the county: Beckville, Carthage and Gary ISD and Panola Charter School with a grade 7-12 enrollment of 1,862 and an average drop out rate of 0.7% compared to the state dropout rate of 2.7%.²⁵

Tracking graduates from FY 2007 shows that 59% of Carthage High School graduates who were known to have enrolled in a Texas public college for fall 2007 enrolled in Panola College. Panola College information was not available from this source for Beckville ISD, Gary ISD, or Panola Charter School.²⁶

²² Texas WorkForce Commission, Labor Market Information Department, 2008

²³ Temporary Assistance for Needy Families, Food Stamp and Medicaid recipients, 2008 data from Texas Department of State Health Services

²⁴ U. S. Census Bureau Texas County Quick Facts population estimates, July 2007

²⁵ Texas Education Agency Secondary School Completion and Dropouts in Texas Public Schools, Supplemental District Data, 2006-2007

²⁶ Texas Higher Education Coordinating Board publication; note this is not the percentage of the entire graduating class, but only those who were known to enroll in a Texas public college in fall 2007.

Shelby County

Geography

The county of Shelby is the 96th largest in population of the 254 counties in Texas with an estimated population of 25,705 in July 2007.²⁷ Shelby County's population has had an estimated increase of 5.1% since the 2000 census, compared to the state rate of population growth of 14.6%. The county seat of Shelby is Center (5,950), so named because of its location in the center of the county. Panola College's Shelby College Center and Shelby Regional Training Center are located in Center, Texas. Other towns in the county include Timpson (1,112), Tenaha (1,036), Joaquin (983), and Shelbyville (215).

The county consists of 794 square miles with a 2000 population density 31.8 residents per square mile. The average density in Texas is 79.6 persons per square mile. The land is partly hills with much bottom land; 67,762 acres is national forest land. Bodies of water include Attoyac Bayou and Toledo Bend Reservoir with many other streams.

Population Statistics

The Census Bureau estimates the county's race/ethnic distribution in 2007 to be:²⁸

	<i>Shelby County</i>	<i>Texas</i>
White	65.0%	47.9%
Black	18.4%	12.0%
Hispanic ²⁹	15.5%	36.0%
Asian/Pacific Islander	1.8%	3.5%
Native American	0.4%	0.7%
Report 2 or more races	0.8%	1.2%

The 2007 estimates for Texas show a population composition according to age as follows:³⁰

<i>Age</i>	<i>Shelby County</i>	<i>Texas</i>
0-4	7.3%	8.0%
5-18	20.2%	20.5%
19-29	14.0%	16.7%
30-44	17.3%	21.9%
45-64	24.8%	23.0%
65 plus	16.4%	9.8%

²⁷ July 1, 2007 population estimates for Texas counties and towns were obtained from the Texas State Data Center and Office of the State Demographer

²⁸ U. S. Census Bureau Texas Quick Facts population estimates, 2007

²⁹ Hispanics may be of any race, so also are included in other applicable race categories. For this reason, the total percentage may be more than 100%

³⁰ July, 2007 population estimates for Shelby County, Texas were obtained from the Texas State Data Center and Office of the State Demographer

If the population cohort 45 and over is higher than the state average as it is in Shelby County, this suggests a stable, mature population comprised of mainly "empty-nesters", retirees and the aged. When the 30-44-age cohort is higher than the state average, this is a healthy economic situation since this group contains the greatest share of the productive labor force. Decreases over time in this group, as is the case in Shelby County, especially when similar changes are not occurring statewide, can indicate a poor labor market.

Shelby County had about 9,595 households in 2000 according to the census. This represents an average of 2.59 persons per household. Statewide, there were 2.82 persons per household in 2000 with roughly 7.39 million Texas households. In 2007, an estimated 27.5% of Shelby County residents are children under age 18 – these are our potential college students.

Local industry consists primarily of broiler, egg production, cattle, timber and tourism. According to the 2000 census, 53.5% of the over age 16 population of Shelby County is employed. This compares to the Texas rate of 63.6% for that age group. The median household income in 2007 was \$33,420 compared to the state median household income of \$47,563. The annual unemployment rate in the county is 4.9% compared to 4.9% statewide (year 2008 data).³¹

During 2008, the county-wide monthly average food stamp recipients were 1,318 people with an average of 143 receiving basic TANF. During the first half of 2008, on average 4,148 people were Medicaid clients, including families and children.³² It has been estimated that 18.8% of Shelby County residents live below the poverty level, compared to 16.3% rate statewide.³³

There are six independent school districts in the county: Center, Excelsior, Joaquin, Shelbyville, Tenaha, and Timpson ISD with a grade 7-12 enrollment of 2,215 and an average drop out rate of 0.7% compared to the state dropout rate of 2.7%.³⁴

Tracking graduates from FY 2007 shows that 36% of Center High School graduates, 68% of Joaquin High School graduates, 44% of Shelbyville High School graduates, and 43% of Timpson High School graduates who were known to have enrolled in a Texas public college for fall 2007 enrolled in Panola College. Panola College information was not available from this source for Tenaha ISD.³⁵

³¹ Texas WorkForce Commission, Labor Market Information Department, 2008

³² Temporary Assistance for Needy Families, Food Stamp and Medicaid recipients, 2008 data from Texas Department of State Health Services

³³ U. S. Census Bureau Texas County Quick Facts population estimates, July 2007

³⁴ Texas Education Agency Secondary School Completion and Dropouts in Texas Public Schools, Supplemental District Data, 2006-2007

³⁵ Texas Higher Education Coordinating publication; note this is not the percentage of the entire graduating class, but only those who were known to enroll in a Texas public college in fall 2007

Panola College District Demographics

Educational Attainment – Population 25 years and older, 2000 census						
	Harrison County	Marion County	Panola County	Shelby County	4 County College District	Texas
No HS diploma or GED	21.7%	32.5 %	24.2%	31.1%	25.2%	24.4%
High school graduate or GED	34.1 %	33.1%	34.8%	35.5%	34.4%	24.8%
Some college, no degree	23.1 %	22.3%	22.4%	18.3%	21.9%	22.4%
Associate degree	5.7 %	3.5%	5.2%	3.0%	4.8%	5.2%
Bachelor's degree	10.8 %	5.5%	8.8%	7.6%	9.2%	15.6%
Graduate or professional degree	4.6%	3.0%	4.6%	4.6%	4.5%	7.6%
HS graduate or higher	78.3%	67.5%	75.8%	68.9%	74.8%	75.9%
Bachelor's degree or higher	15.4%	8.5%	13.4%	12.2%	13.7%	23.2%

Income Data, Year 2007						
Year 2007	Harrison County	Marion County	Panola County	Shelby County	4 County College District	Texas
Persons below poverty level ³⁶	16.5%	25.0%	13.7%	18.3%	17.2%	16.3%
Median household income ³⁷	\$40,873	\$31,043	\$42,324	\$33,420	\$38,957	\$47,563
Per capita income ³⁸	\$32,435	\$24,366	\$31,882	\$26,190		\$37,083

New students (FTIC/Full Time) entering Panola College in Fall 2008:

30.8% of new students were enrolled in developmental math
 14.8% of new students were enrolled in developmental writing
 25.5% of new students were enrolled in developmental reading

³⁶ U. S. Census Bureau Texas County Quick Facts population estimates, July 2007

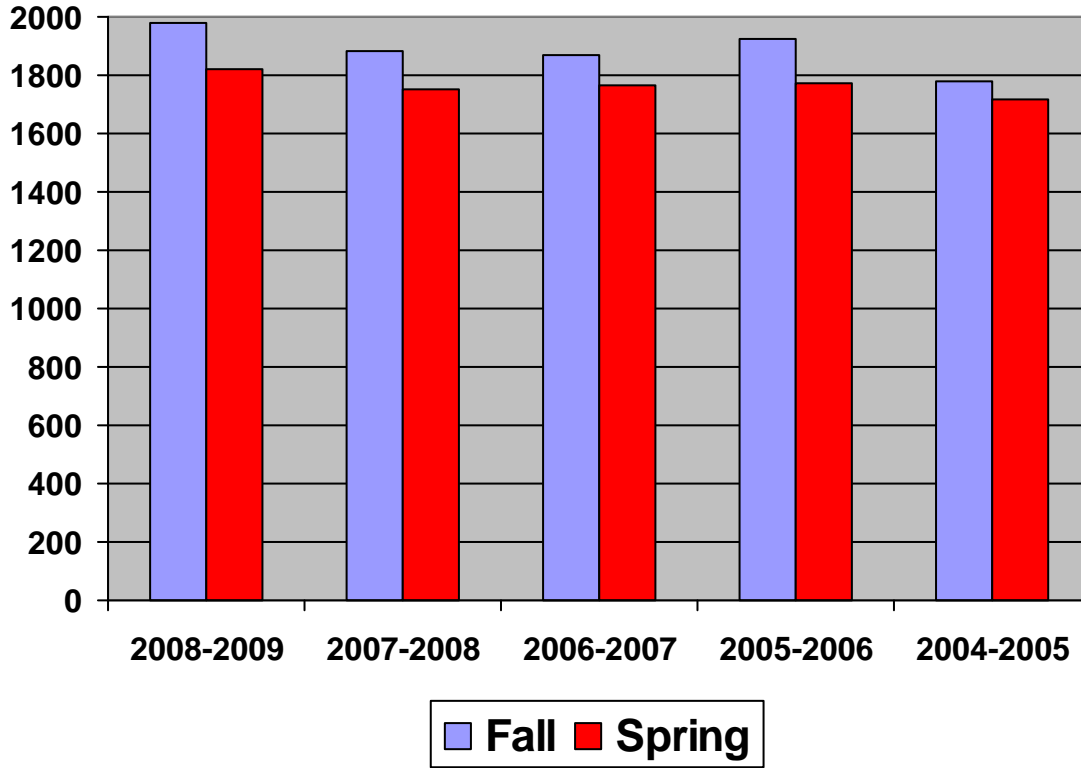
³⁷ U. S. Census Bureau Texas County Quick Facts population estimates, July 2007

³⁸ Bureau of Economic Analysis, 2007 Per Capita Income



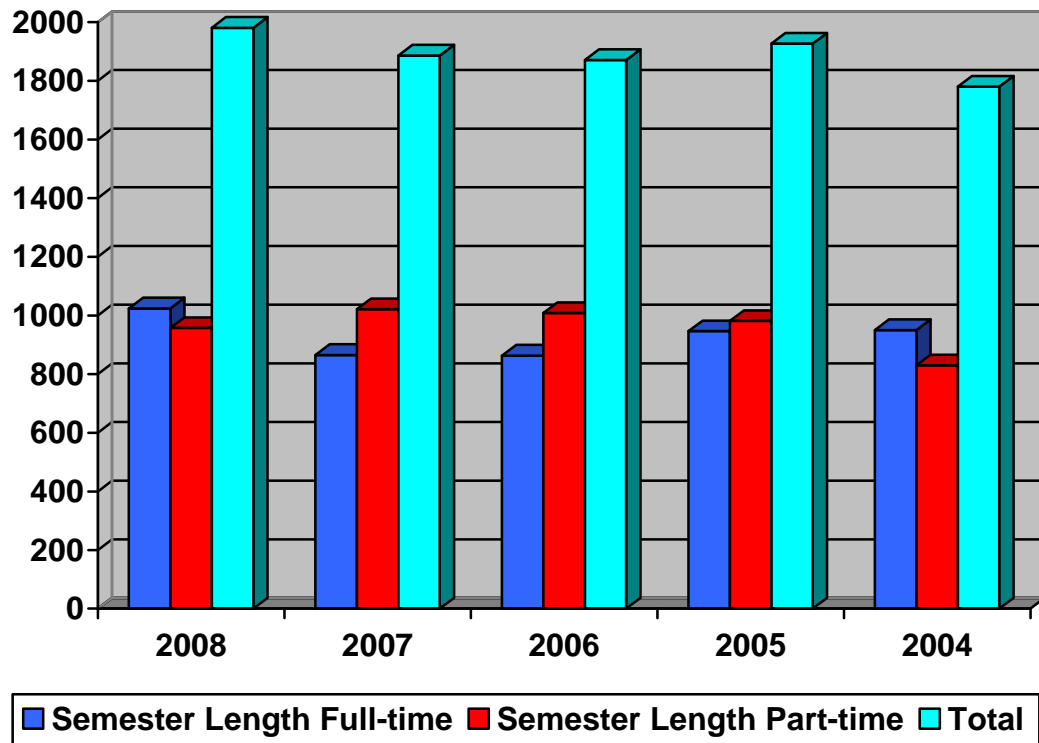
Institutional Data

Five Year Fall / Spring Enrollment Report



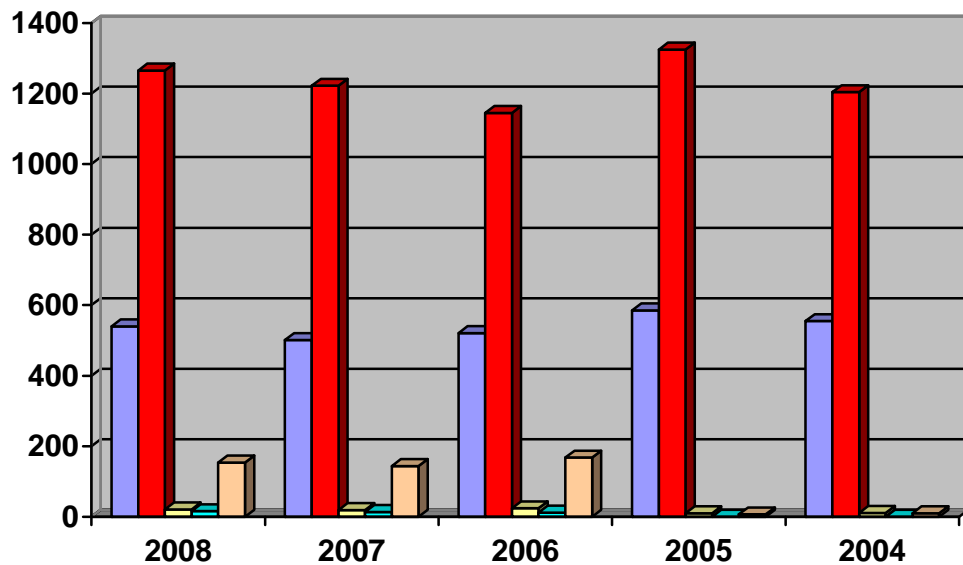
		Year	2008-2009	2007-2008	2006-2007	2005-2006	2004-2005
Number of Students	Fall		1981	1886	1871	1927	1780
	Spring		1820	1753	1766	1769	1720

**Five Year Credit Enrollment By Full-time/Part-time Status
Fall Semesters**



Status	2008	2007	2006	2005	2004
Semester Length Full-time	957	865	863	946	950
Semester Length Part-time	1024	1021	1008	981	830
Total	1981	1886	1871	1927	1780

Five Year Fall Credit Enrollment By Tuition Status and Geographical Distribution



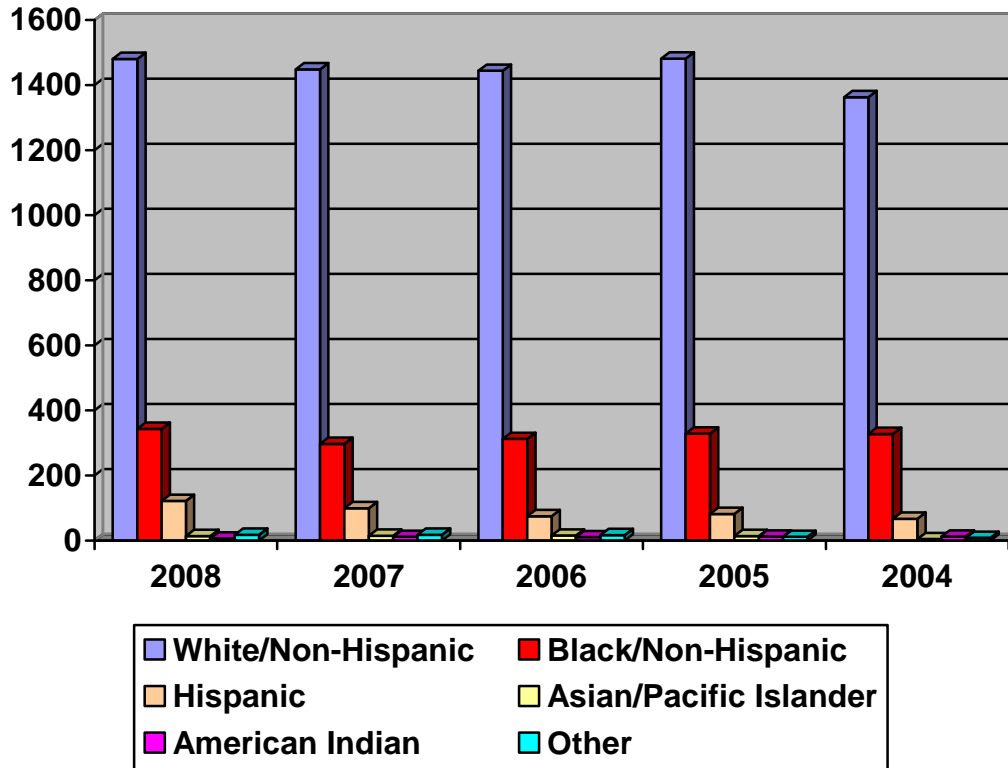
■ In-County	■ Out-of-County (includes LA)
■ Out-of-State (excludes LA)	■ Foreign
■ Exemption waivers (includes LA)	

Tuition Status	2008	2007	2006	2005	2004
In-County	540	501	522	585	555
Out-of-County	1265	1215	1154	1324	1204
Out-of-State (excludes LA)	21	19	27	10	11
Exemption waivers (includes LA)	154*	144*	168*	7	7
Other (Hazelwood and Barksdale)	1	7		1	3
Total	1981	1886	1871	1927	1780

*Prior to Fall 2006, LA residents were counted as out of county tuition status. As of Fall 2006, LA residents are reported in the exemptions/waivers category.

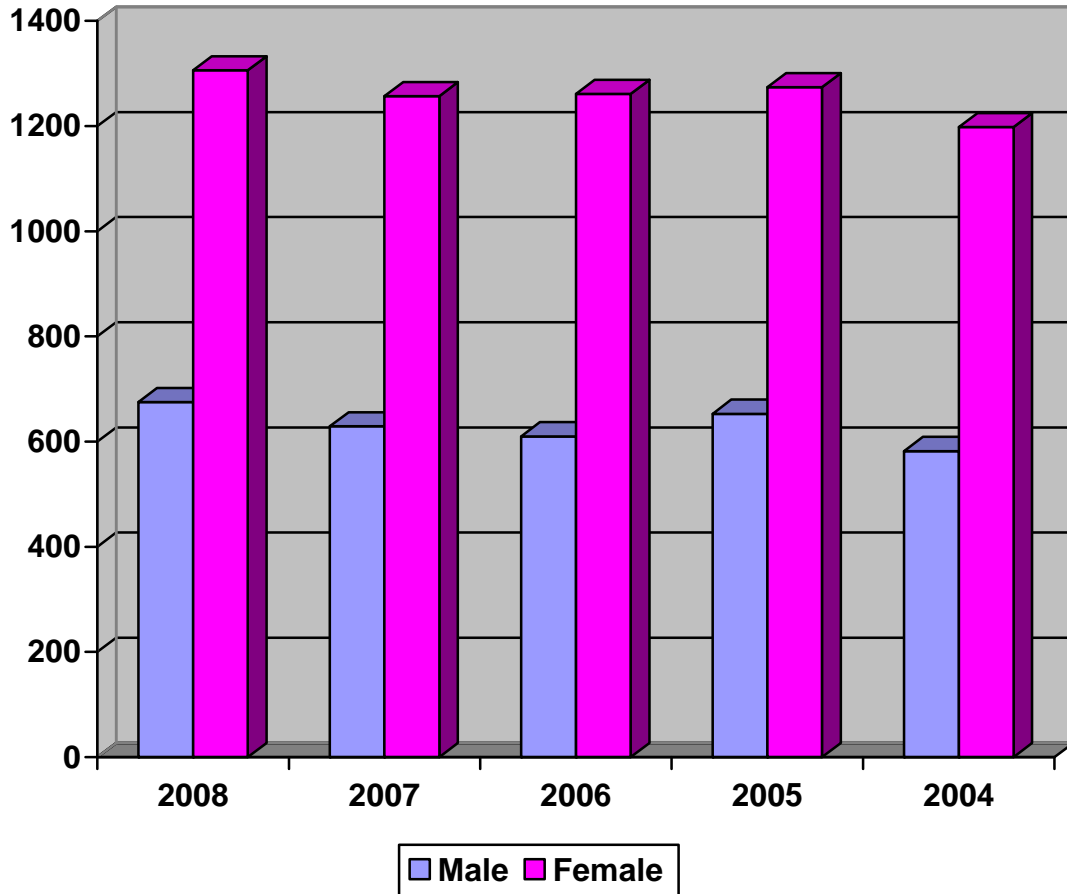
Geographic Distribution	2008	2007	2006	2005	2004
In-State	1807	1721	1675	1758	1610
Out-of-State	158	151	184	158	161
Foreign	16	14	12	11	9
Total	1981	1886	1871	1927	1780

**Five Year Trend of Credit Students By Ethnicity
Fall Semesters**



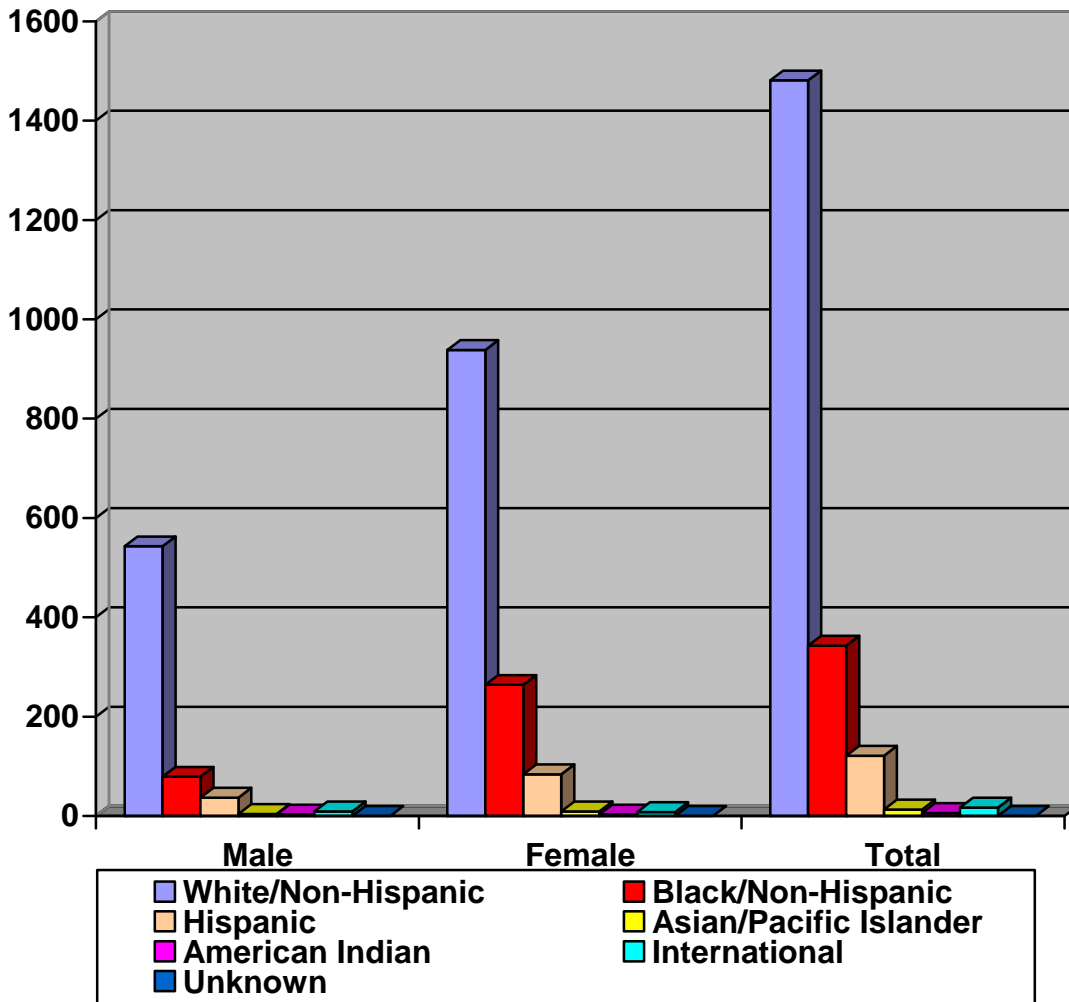
Ethnic Group	2008	2007	2006	2005	2004
White/Non-Hispanic	1481	1448	1444	1482	1363
Black/Non-Hispanic	343	297	312	328	327
Hispanic	121	99	74	81	66
Asian/Pacific Islander	13	14	15	13	4
American Indian	6	11	10	12	12
Other	17	17	16	11	8
Total	1981	1886	1871	1927	1780

**Five Year Trend of Credit Students by Gender
Fall Semesters**



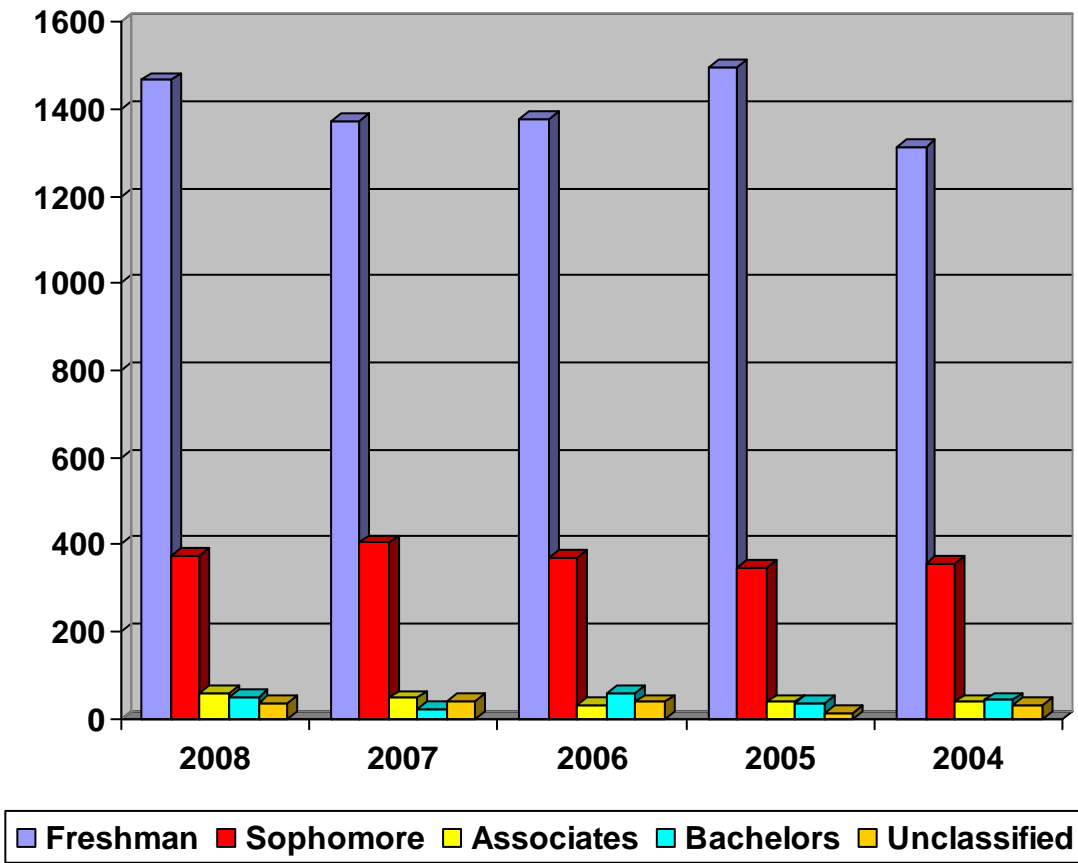
Classification	2008	2007	2006	2005	2004
Male	675	629	610	653	582
Female	1306	1257	1261	1274	1198
Total	1981	1886	1871	1927	1780

Fall 2008 Credit Students Ethnic/Gender Breakdown



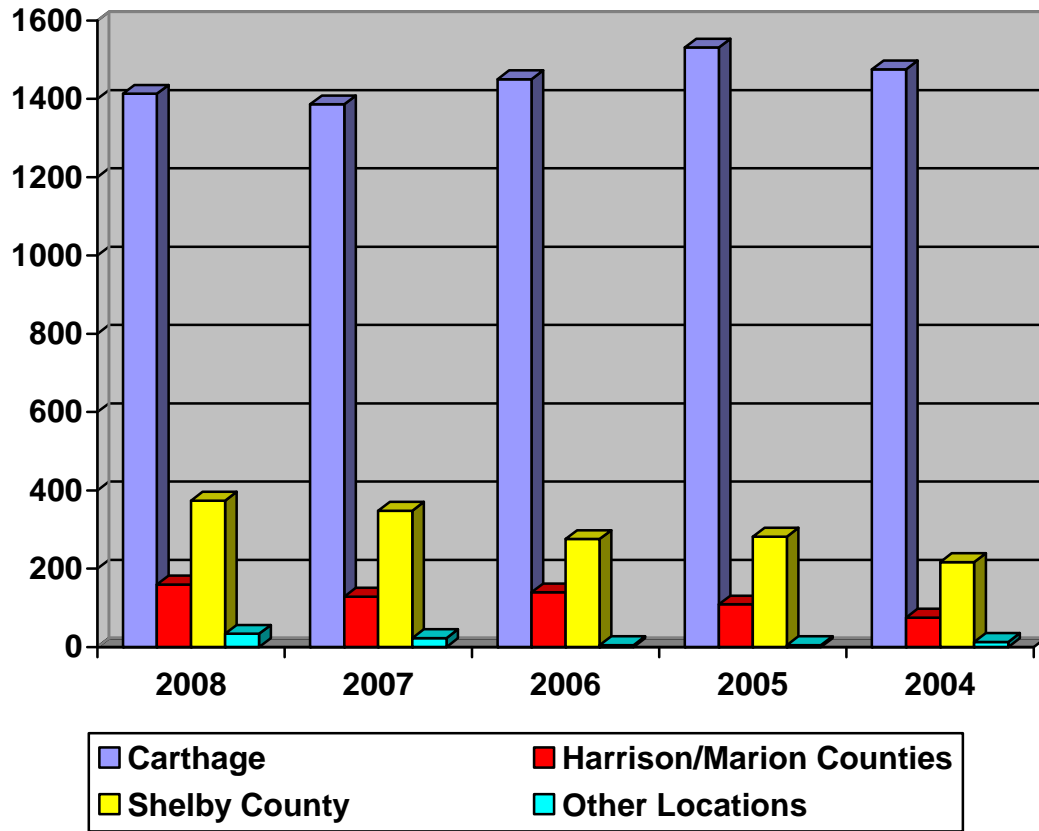
Ethnic Group	Male	Female	Total
White/Non-Hispanic	543	938	1481
Black/Non-Hispanic	79	264	343
Hispanic	37	84	121
Asian/Pacific Islander	4	9	13
American Indian	3	3	6
International	9	8	17
Unknown	0	0	0
Total	675	1306	1981

Five Year Fall Enrollment By Level



Level	2008	2007	2006	2005	2004
Freshman	1467	1374	1379	1496	1313
Sophomore	373	404	368	347	356
Associates	59	46	29	37	37
Bachelors	47	21	58	36	42
Unclassified	35	41	37	11	32
Total	1981	1886	1871	1927	1780

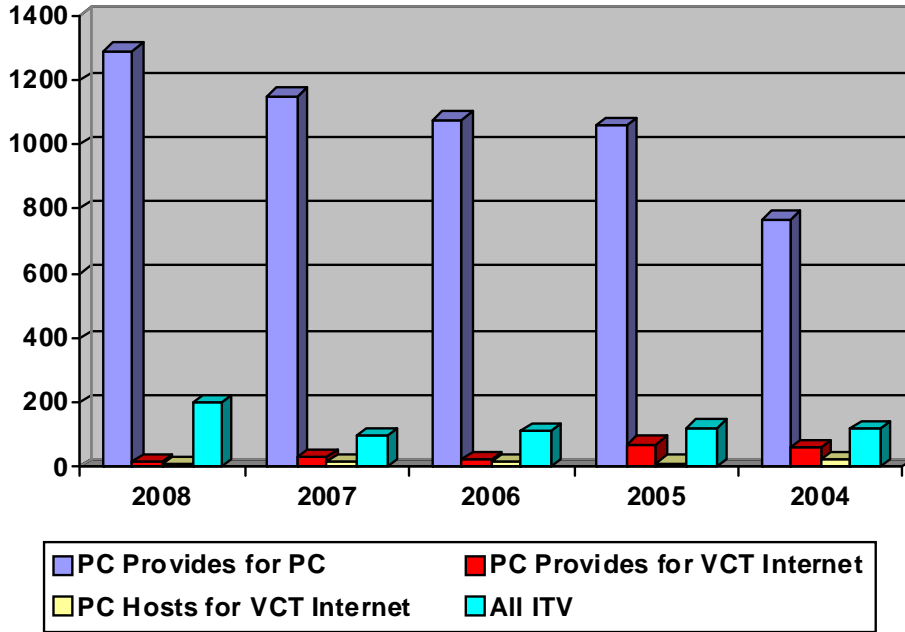
**Five Year Trend of Fall Student Headcount
Breakdown By Campus**



Campus	2008	2007	2006	2005	2004
Carthage	1413	1386	1450	1531	1475
Harrison/Marion Counties	160	129	140	109	75
Shelby County	374	348	276	282	217
Other Locations	34	23	5	5	13
Total	1981	1886	1871	1927	1780

Fall Distance Learning Duplicated Headcount Breakdown By Mode of Delivery

Duplicated Head Count



Mode of Delivery *	2008	2007	2006	2005	2004
Internet					
PC Provides for PC	1183	1151	1076	1061	768
PC Provides for PC –Flex mid-semester	107				
PC Provides for VCT	14	31	22	72	62
PC Hosts for VCT	11	18	15	12	25
PC students receiving courses from other colleges per agreement	0	3	9		1
Kilgore and Paris students receiving PC courses per agreement	0	26	37		
<i>Internet Total</i>	<i>1315</i>	<i>1229</i>	<i>1159</i>	<i>1145</i>	<i>856</i>
Interactive Television					
PC Provides PC at Remote Sites	183	65	57	80	90
PC Provides for VCT	4	31	28	4	6
Angelina/Kilgore students receiving PC courses per agreement	0	0	0	3	6
PC students receiving Angelina/Kilgore/Paris/TJC courses per agreement	11	2	25	12	12
Community Service for University courses	0	1	0	24	4
<i>ITV Total</i>	<i>198</i>	<i>99</i>	<i>110</i>	<i>123</i>	<i>118</i>
Total	1513	1328	1269	1268	974

* An explanation of modes of delivery is on the following page.

Definition of Distance Learning Modes of Delivery

Internet Courses

PC Provides for PC – Panola College students are enrolled in Internet courses offered by Panola College.

PC Provides for VCT – Students enrolled in other community colleges take Panola College Internet courses through the Virtual College of Texas (VCT). These students are not counted toward state funding, but Panola College receives a lease fee of \$195 for each student.

PC Hosts for VCT – Panola College students are enrolled in other community colleges' courses through the Virtual College of Texas. Panola College receives state funding for these students and pays lease fees to the providing colleges.

PC students receiving courses from other colleges – Panola College students are taking an Internet course from other colleges per agreement with no exchange of funds. These students are being processed through the VCT.

Students from Other Community Colleges Receiving Courses – Students are taking an Internet course from Panola College per agreement with no exchange of funds. These students are being processed through the VCT

Interactive Television (ITV) Courses

PC Provides for PC Students at Remote Sites – Panola College students are enrolled in ITV courses offered by Panola College. Only the students at remote sites are counted in this category. The students seated in the originating classroom with the instructor are not included in this count. Remote sites include Shelby College Center, Marshall Mall, and area high schools.

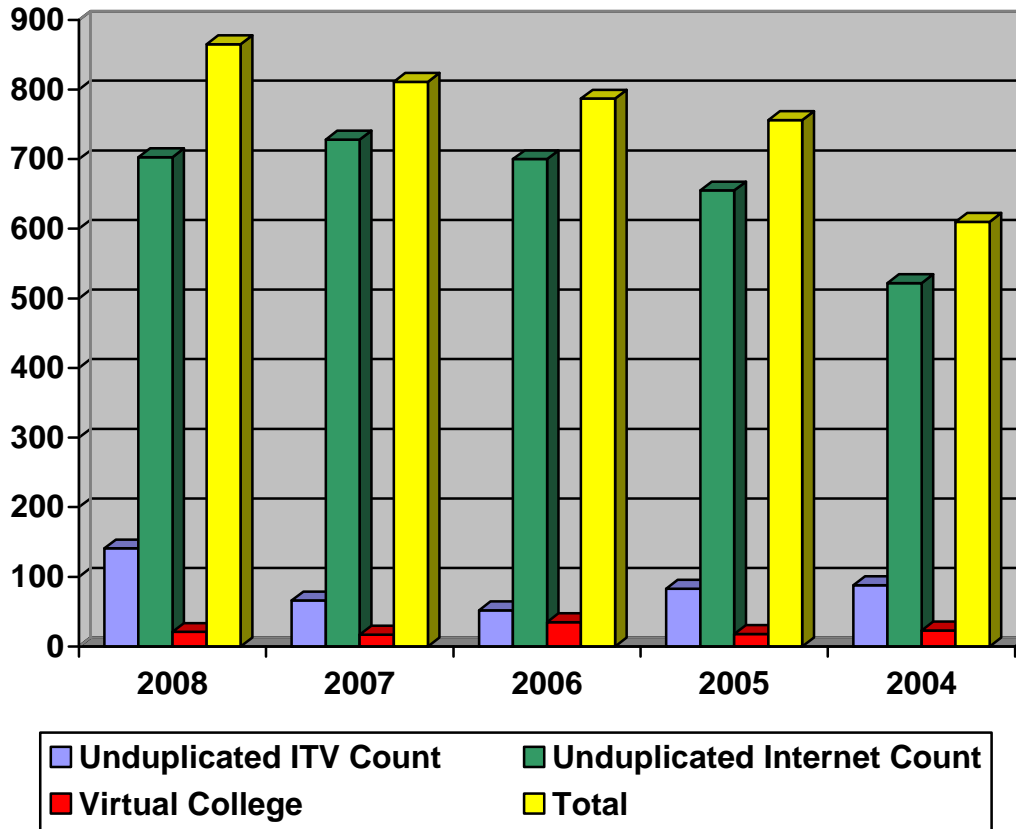
PC Provides for VCT – Students are enrolled in Panola College ITV courses through VCT. These students are not counted toward state funding, but Panola College receives a course lease fee of \$195 for each of these students.

Other Community College Students Receiving PC Courses – An agreement allows institutions to mutually share courses via ITV using the NorthEast Texas Network (NETnet) system with no exchange of funds. These students are processed through the VCT.

PC Students Receiving Other Community College Courses – An agreement allows mutually shared courses via ITV using the NorthEast Texas Network (NETnet) system with no exchange of funds. These students are processed through the VCT.

Community Service for University Courses – Panola College receives upper level university courses via the NETnet system. There is no fee charged these students.

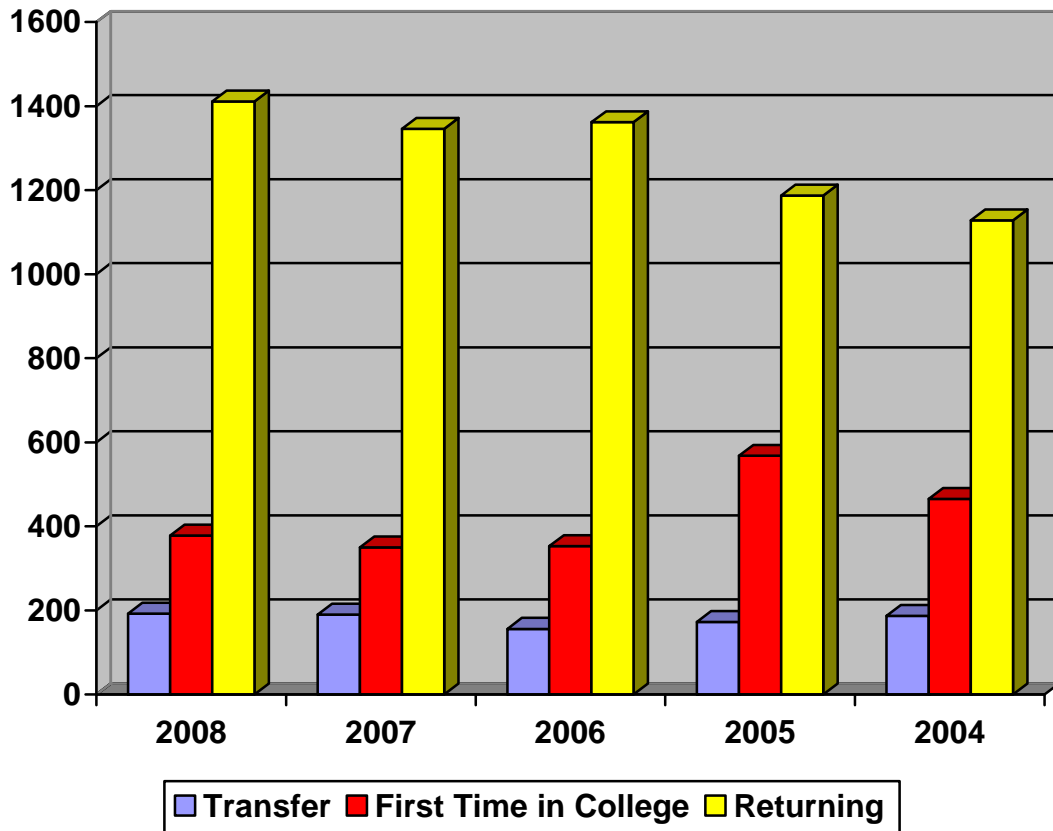
**Five Year Trend for Fall Distance Learning Enrollment
Unduplicated Head Count**



Headcount	2008	2007	2006	2005	2004
Unduplicated ITV Count	141	66	52	83	88
Unduplicated Internet Count	703	728	700	655	522
Virtual College (Internet-based)	21	17	35	18	23
Unduplicated Total **	865	811	787	756	610**

** Some students may be enrolled in both Internet and ITV classes and counted once for each of the individual categories. Therefore, a student who is counted in the unduplicated headcount for the Internet and for the ITV categories will only be counted once in the Total category, so the columns will not necessarily sum to the total.

**Five Year Trend
Fall Student Distribution**



Distribution	2008	2007	2006	2005	2004
Transfer	192	190	156	172	187
First Time in College**	378	350	353	568	465
Returning	1411	1346	1362	1187	1128
Total	1981	1886	1871	1927	1780

** First Time in College Fall 2008	Number
May 2007 Graduates	204
May 2008 Graduates with Prior Dual Enrollment or Early Admission	73
Previous High School Graduates	46
Previous HS Graduates with Prior Dual Enrollment or Early Admission	8
Individual Applications	6
GED Entrants	41
Total	378

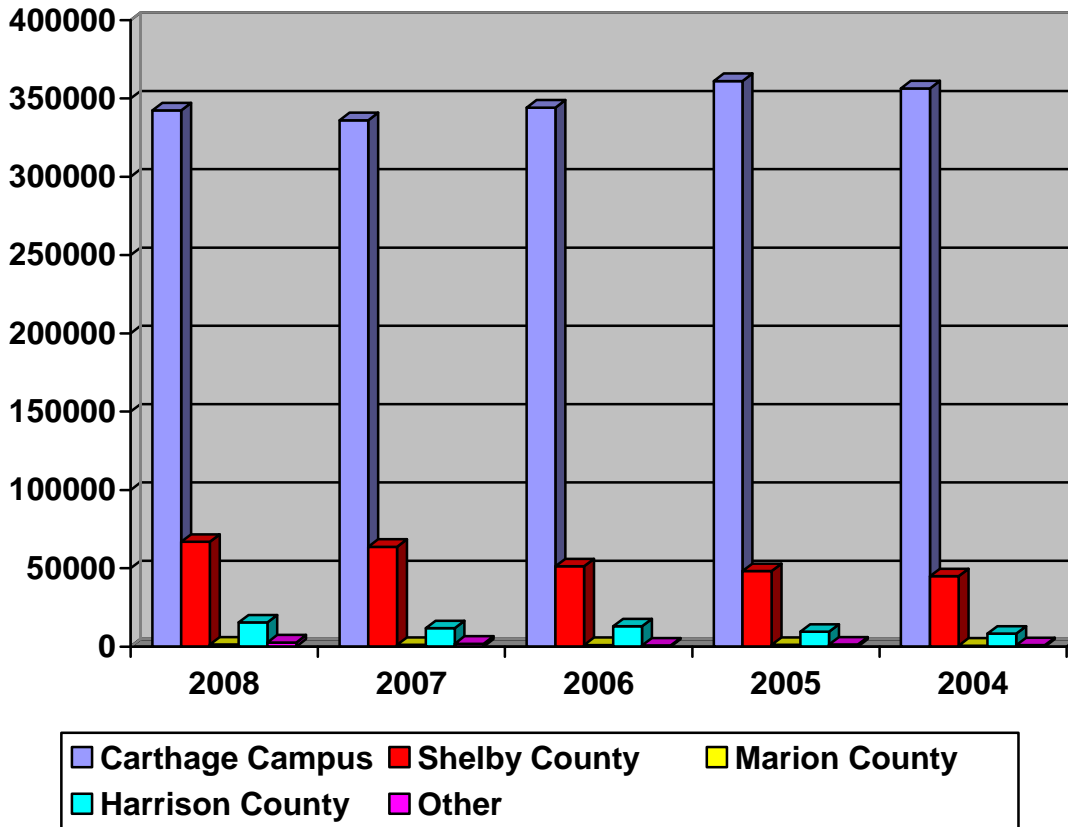
**Six Year Trend of
Fall Contact Hours By Program Area:
Academic and Career / Technical**

Academic (Funded*)	2008	2007	2006	2005	2004	2003
Agriculture	2,544	1,584	2,832	4,000	2,400	
Biology	32,352	34,992	38,880	39,840	43,584	39,744
Business Mgmt., Mrkting	4,224	4,608	3,120	4,368	4,848	5,328
Communications	3,504	912	1,248	2,304	1,824	0
Computer Science	12,960	12,192	14,256	16,272	13,488	13,872
Consumer Home EC (Nutrition)	7,216	6,112	8,128	5,520	4,032	2,736
Criminal Justice, Public Admin.	1,584	912	672	768	1,392	
Visual and Performing Art	30,528	29,968	31,968	29,872	30,416	26960
Foreign Language	2,592	2,256	2,112	2,640	2,016	2,944
Health	2,736	2,928	2,016	2,592	2,928	1,152
Letters	45,648	46,416	46,416	52,544	49,120	47,856
Mathematics	31,872	29,520	30,560	31,328	30,432	31,312
Physical Education and Fitness	19,632	20,112	20,256	25,632	23,760	19,200
Physical Science	11,184	13,184	11,200	13,184	11,456	11,536
Psychology	15,680	12,496	13,216	10,608	11,328	14,592
Social Science	34,080	34,800	32,736	35,040	39,168	36,768
Total Funded Academic CH	258,336	252,992	259,616	276,512	272,192	254,000

Career / Technical (Funded*)	2008	2007	2006	2005	2004	2003
Agriculture (FTN)	1,296	1,344	48			
Business Mgmt, Admin (OST)	12,832	9,216	11,520	9,312	10,224	9,024
Computer Info Systems related	3,408	3,024	3,936	3,312	5,536	3,344
Cosmetology (Cons & HEC)	27,440	25,888	20,192	23,360	28,256	24,448
Education Technology	704	1,344	0	704		
Environmental Technology	816	816	0	864	432	
Foreign Language (ADN, OTA)	1,248	1,184	1,968	1712	1568	832
Foreign Language (ITech/PTech)	320					
Forest Technology	0	0	0	0	0	3,168
Graphics Arts/Animation	0	0	480			
Health Information Technology	8,608	6,512	6,928	9,136	10,496	8,400
Industrial/Petroleum Technology	16,336	11,392	3,552	5,568	1,664	2,320
Welding	9,056	8,672	8,720	10,944	5,408	4,288
Associate Degree Nursing	32,512	37,472	35,152	30,832	30,736	25,760
Vocational Nursing	38,608	36,640	39,040	35,952	33,104	32,496
Occupational Therapy	14,272	14,320	16,048	13,712	10,064	9,696
Total Funded Career / Tech. CH	167,456	157,824	147,584	145,408	137,488	123,776
Total Funded Academic and Career/Technical CH	425,792	410,816	407,200	421,920	409,680	377,776

* Some contact hours are not funded by the state due to repeated courses.

**Fall Contact Hours By Campus:
Academic and Career / Technical**



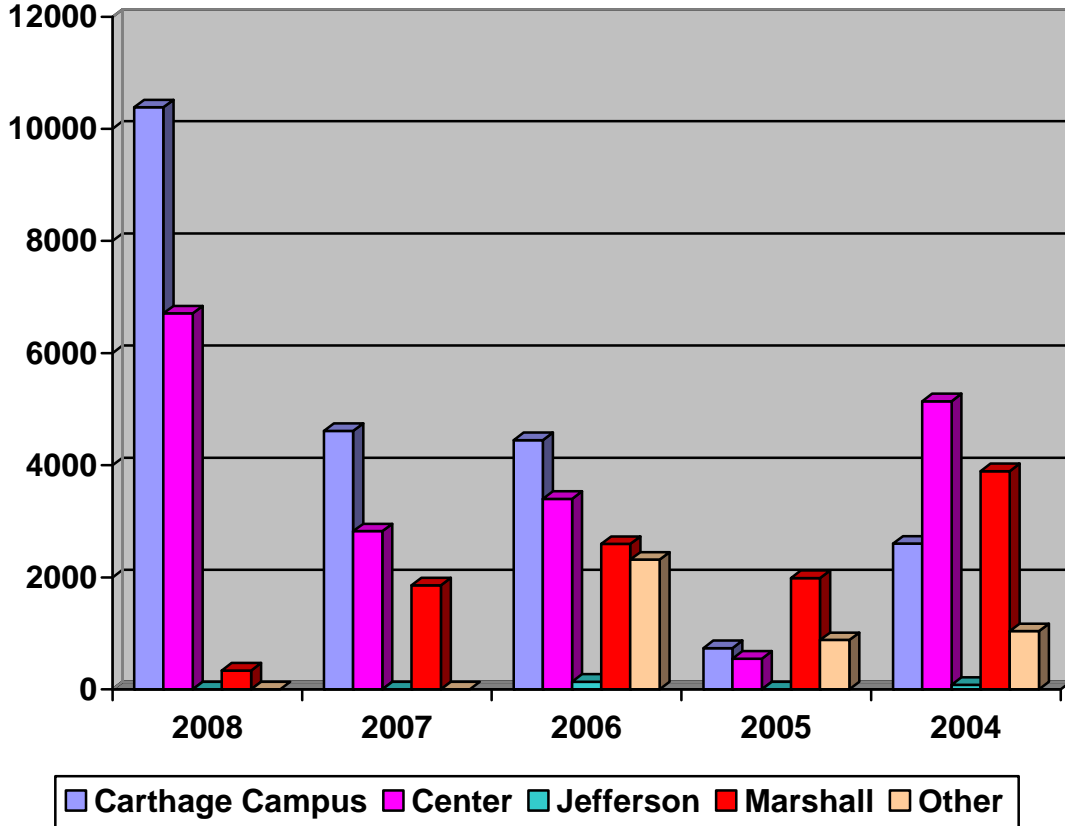
Academic & Career / Technical	2008	2007	2006	2005	2004
Carthage Campus	342,400	336,112	344,432	361,344	356,816
Panola County High Schools	1,952	1,680	0	0	0
Marshall Center	14,352	9,952	12,480	9,456	7,728
Harrison County High Schools	1,008	1,680	480	432	432
Jefferson Center & Jefferson HS	1,344	1,104	1,008	1,152	576
SCC and SRTC	58,688	56,816	44,880	48,160*	43,408*
Shelby County High Schools	8,192	6,944	6,288	4,368**	1,488**
Garrison High School	640	0	480	0	672
Non-funded (three-peats, Barksdale PE only and other non-reported, audits)	(2,784)	(3,472)	(2,848)	(2,992)	(1,440)
Total Off-Campus	86,176	78,176	65,808	63,808	54,640
Total Semester Length CH (Includes Non-funded)	428,576	414,288	410,048	424,912	411,120

For all five years, the non-funded (repeats and non-reported) have been counted in their respective categories and have been included in the totals and should not be added again.

*Center High School is included in this category.

**Center High School is excluded from this category and is counted in the SCC and SRTC category.

**Continuing Education: Five Year Trend of
Fall Contact Hours by Campus**

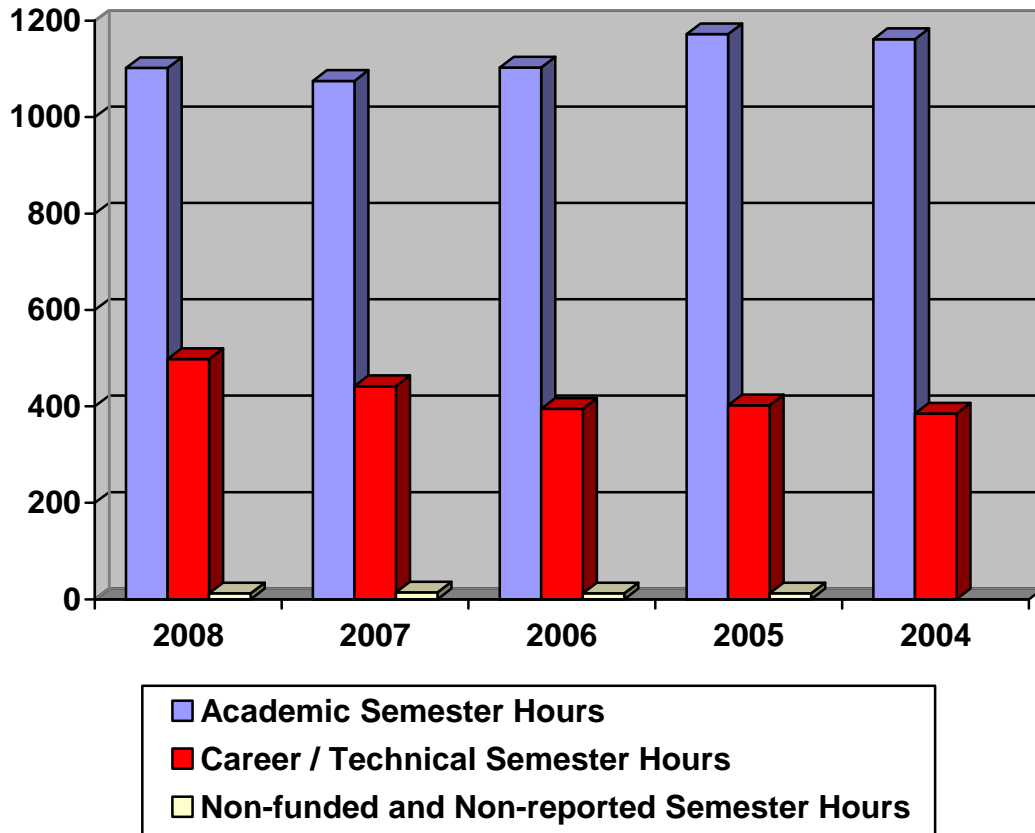


Continuing Education	2008	2007	2006	2005	2004
Carthage	10,386	4,611	4,447	736	2,600
Center	6,708	2,822	3,400	547	5,139
Jefferson	0	0	136	0	80
Marshall	336	1,856	2,593	1,986	3,894
Other	0	0	2,314	880	1,040
Total Continuing Education	17,430	9,289	12,890	4,149	12,753

Fall Contact Hour Summary	2008	2007	2006	2005	2004
Total Semester Length	428,576	414,288	410,048	424,912	411,120
Total Continuing Education	17,430	9,289	12,890	4,149	12,573
Total Unfunded (3-peats and Barksdale)	(2,784)	(3,472)	(3040)	(2,992)	(1,440)
Total Funded *	443,222	420,105	419,898	426,069	422,433

* Some contact hours are not funded by the state due to repeated courses.

**Five Year Trend Fall Credit
Academic / Career and Technical Full-Time Equivalent (FTE*)**



Full Time Equivalent	2008	2007	2006	2005	2004
Academic Semester Hours	1102	1075	1103	1173	1162
Career / Technical Semester Hours	498	442	395	402	385
Non-funded and Non-reported Semester Hours	12*	14*	12*	12*	0
Total FTE	1612	1531	1510	1587	1547

* Some semester hours are not funded by the state due to repeated courses.

Panola College: Programs Offered

Academic Degree Programs

Associate of Arts
Associate of Arts - Teaching
Associate of Science

Technical Degree Programs

Associate of Applied Science – Computer Information Systems
Associate of Applied Science – General Business
Associate of Applied Science – Health Information Technology
Associate of Applied Science – Industrial Technology Specialist
Associate of Applied Science – Nursing (Leading to RN Licensure)
Associate of Applied Science – Occupational Therapy Assistant
Associate of Applied Science – Office Professional
Associate of Applied Science – Office Professional (Legal)
Associate of Applied Science – Office Professional (Medical)
Associate of Applied Science – Petroleum Technology

Technical Certificate Programs

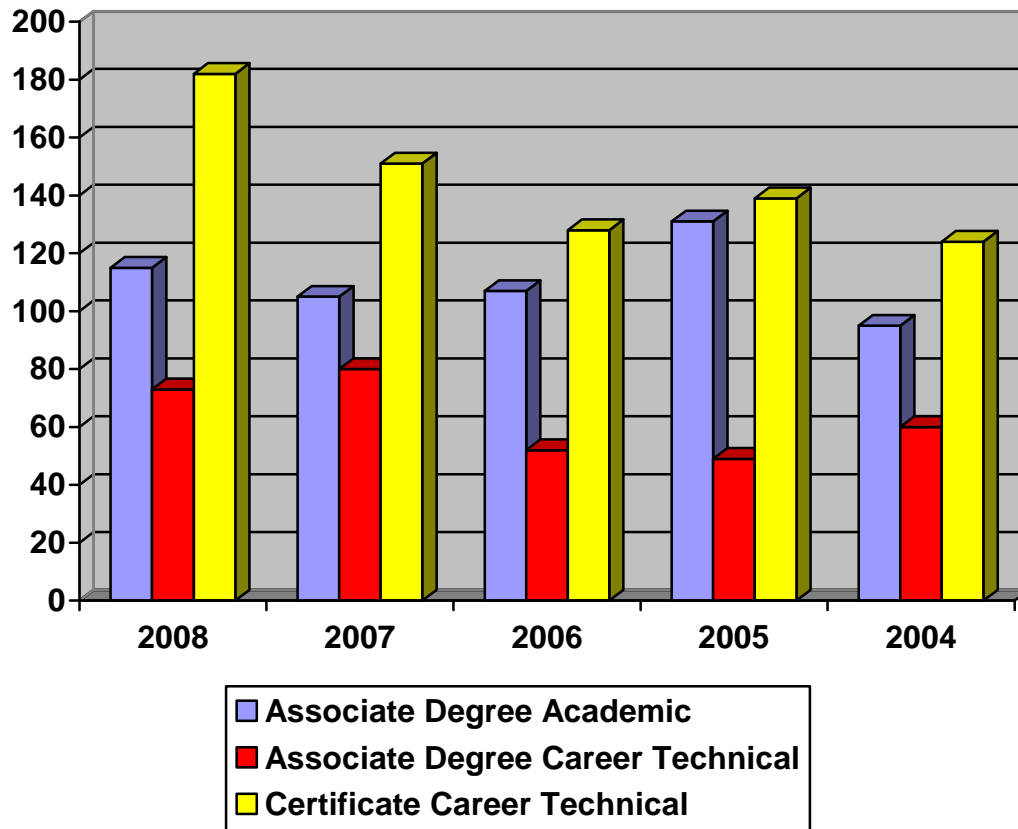
Computer Information Systems
Cosmetology Facial/Esthetic Technology
Cosmetology Instructor Training
Cosmetology Nail Technology
Cosmetology Operator
Environmental/Natural Resource Management
General Business
Health Information Technology - Medical Administrative Assistant/Medical Secretary
Health Information Technology - Medical Coding Technician
Industrial Technology Air Condition and Refrigeration Specialist
Industrial Technology Electrical Specialist
Industrial Technology Specialist
Industrial Technology Support
Industrial Technology Mechanical Specialist
Microcomputer Software Operator
Microcomputer Support Specialist
Nursing - Vocational (Leading to LVN)
Office Professional – Administrative Assistant
Office Professional – General Office
Office Professional – Medical Office Management
Petroleum Technology Training Tech I, II, III, and IV
Productivity Software Marketable Skills
Welding – Basic Welding Specialist
Welding – Pipe Welding Specialist

Fall 2008 Enrollment by Declared Major Field of Study

Curriculum	Total
A D Nursing	412
Agriculture, General	27
Architecture	10
Art, General	9
Biology, General	25
Business and Management	94
Chemistry, General	1
Computer Information Systems	11
Computer Science	8
Cosmetology	46
Cosmetology Instructor	1
Criminology	22
Drama / Theater Arts	23
Education, General	116
Electrical Specialist	7
Engineering	7
English Language and Literature	11
Environmental Technology	0
Facial Specialist	2
Foreign Languages & Literatures	2
Forestry Sciences	1
General Business	20
General Business (1 year certificate)	10
General Studies	480
Geology	1
Health Information Technology	15
Health Professions / Related	38
Health / Medical Assistants	6
History, General	11
Home Economics, General	0
Industrial Technology	3
Industrial Technology Specialist	0
Industrial Technology Support	0
Journalism / Communications	12

Curriculum	Total
Liberal Arts / Sciences	4
Mathematics	6
Mechanical Specialist	0
Medical Administrative Assistant / Secretary	8
Medical Coding	23
Microcomputer Software	2
Microcomputer Support Specialist	2
Music, General	23
Nail Technician	0
Nursing (Transfer)	0
Occupational Therapy Assisting	118
Office Specialist	3
Office Systems Technology	11
Petroleum Technology	28
Petroleum Technology I	38
Petroleum Technology II	7
Phys. Ed. - Teaching and Coach	29
Physics, General	1
Political Science and Govt., Gen.	0
Pre-Dentistry Studies	10
Pre-Law	11
Pre-Medicine Studies	8
Pre-Pharmacy Studies	6
Pre-Veterinary Studies	7
Psychology, General	27
Refrigeration Specialist	3
Social Work	3
Sociology	7
Speech and Rhetorical Studies	8
Teaching	8
Vocational Nursing	92
Welding	49
Welding Specialist	8
Totals:	1981

Five Year Trend
Total Number of Degrees and Certificates Awarded

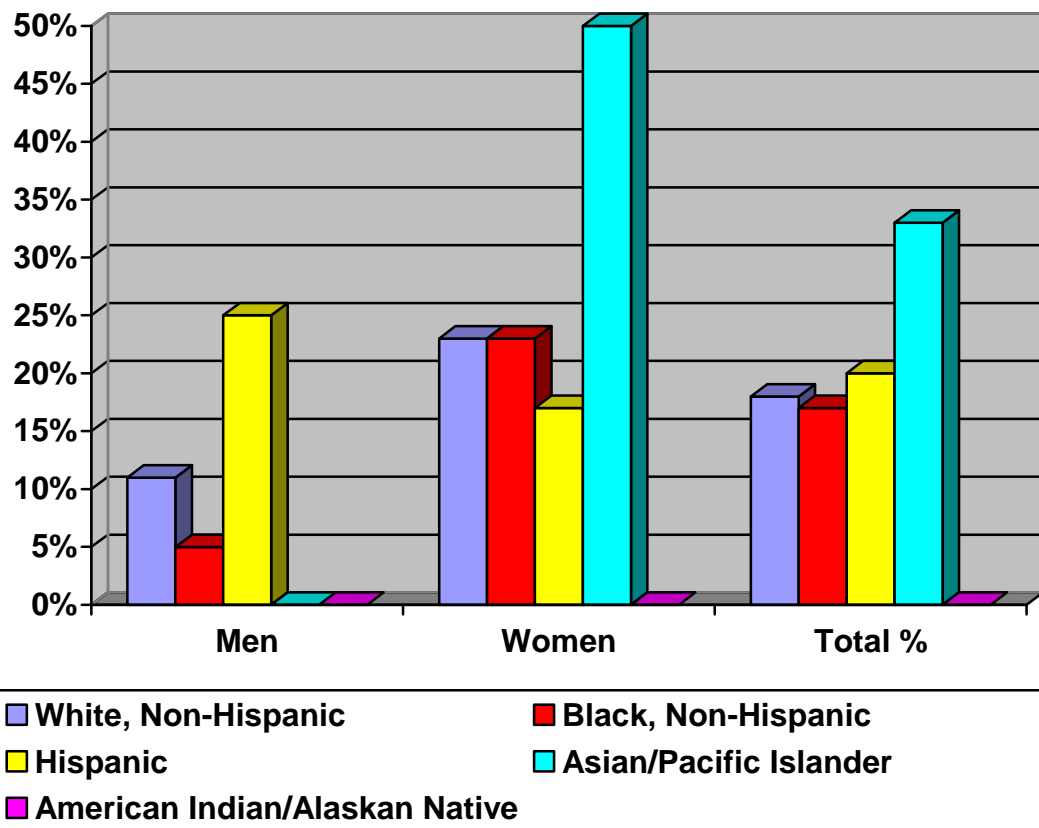


Degree/Certificate	2008	2007	2006	2005	2004
Associate Degree Academic	115	105	107	131	95
Associate Degree Career Tech	73	80	52	49	60
Certificate Career Technical	182	151	128	139	124
Total	370	336	287	319	279
Core Completers	125	105	109	111	103
Field of Study Completers	23	6	11	6	5
Total Completers	518	447	407	436	387

**Percent of First Time, Full-time College Students Who Entered
Fall 2005 (Cohort 2005) and Completed or Transferred-out by Fall 2008**

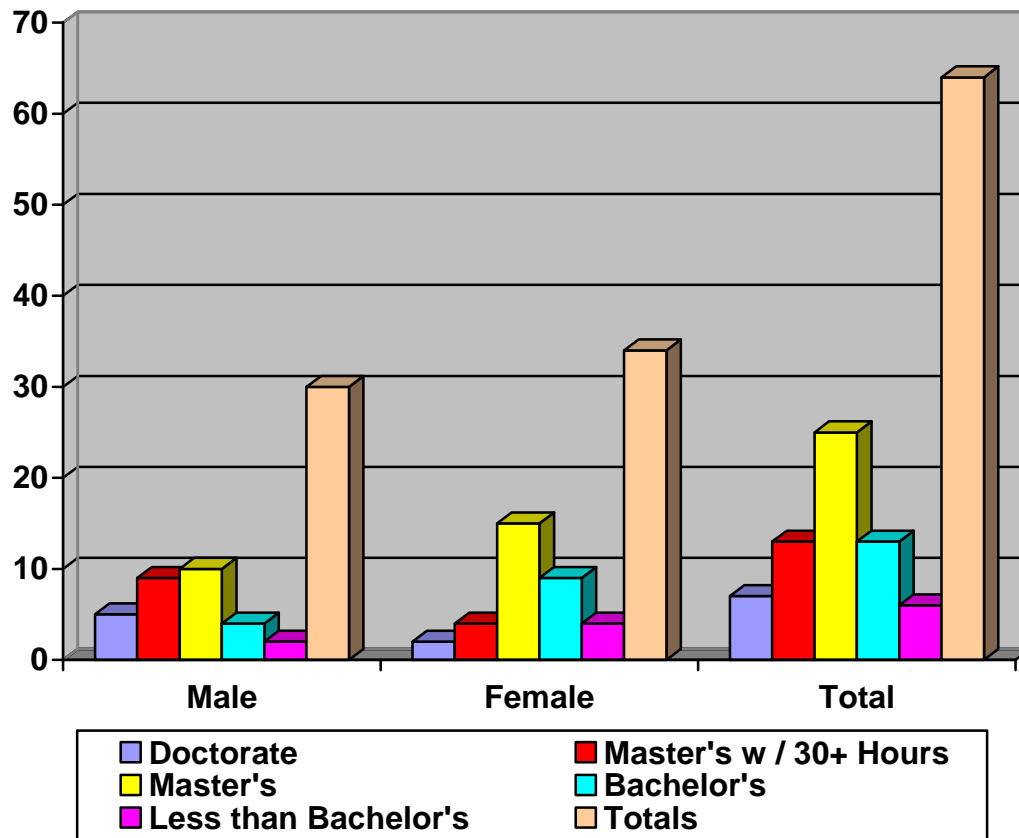
Ethnic Group	Men	Women	Total %	Transfer-out
	% Completing by 2008	% Completing by 2008	% Completing by 2008	% Who Transfer to Another Institution by 2008
White, Non-Hispanic	11%	23%	18%	17%
Black, Non-Hispanic	5%	23%	17%	17%
Hispanic	25%	17%	20%	17%
Asian/Pacific Islander	< 0.5%	50%	33%	33%
American Indian/ Alaskan Native	NA	< 0.5%	< 0.5 %	< 0.5 %
Total % Completing or Transferring-out	11 %	22 %	17 %	17%

Percentage of the Fall 2005 Cohort Who Completed* by Fall 2008



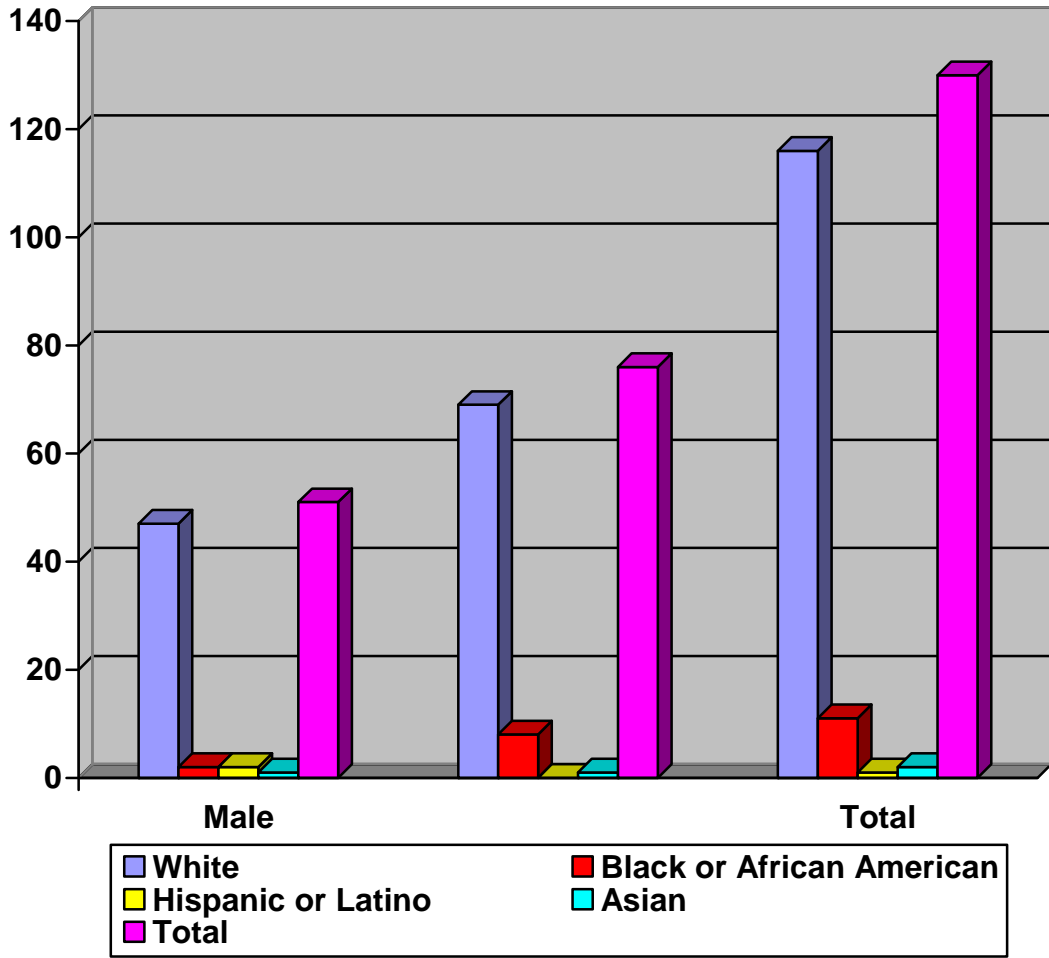
* Completers include students who earn a one or two year certificate, and students earning an Associate's degree.

Number of Full-time Faculty By Degree and Gender (Fall 2008)



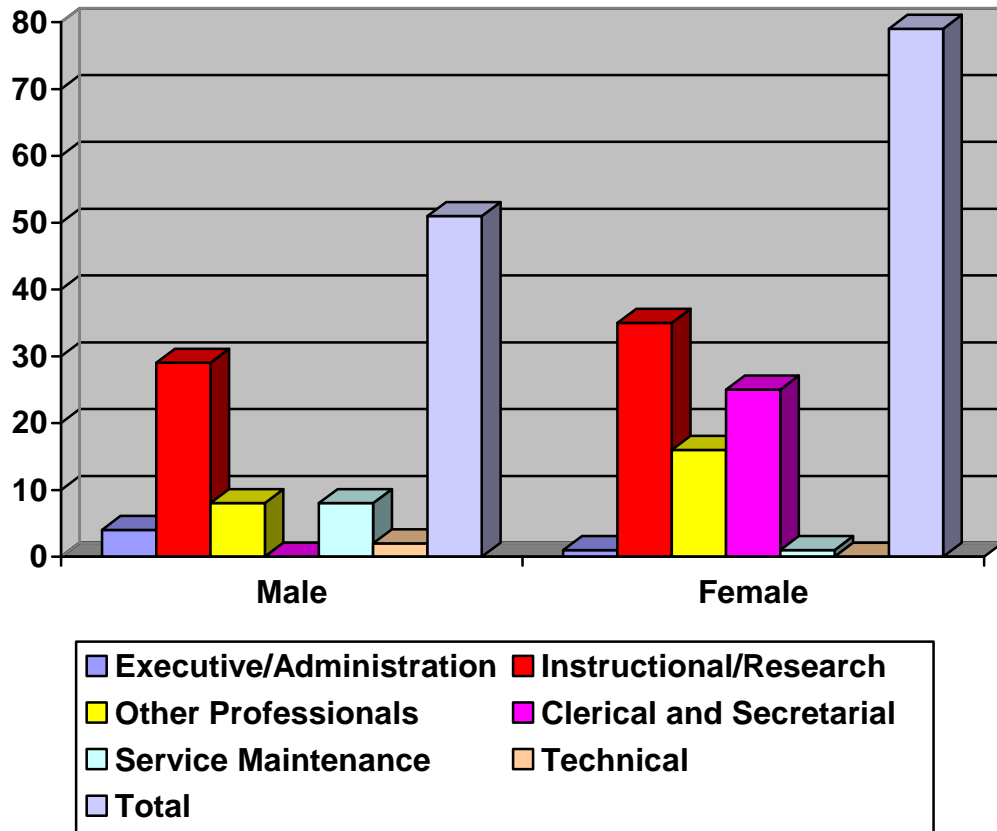
Degree	Male	Female	Total
Doctorate	5	2	7
Master's w / 30+ Hours	9	4	13
Master's	10	15	25
Bachelor's	4	9	13
Less than Bachelor's	2	4	6
Totals	30	34	64

Full-time Employees By Ethnicity and Gender (Fall 2008)



Ethnic Group	Male	Female	Total
White/Non-Hispanic	47	69	116
Black or African American	2	9	11
Hispanic or Latino	1	0	1
Asian	1	1	2
Total	51	79	130

Full-time Employees By Activity and Gender (Fall 2008)



Activity	Male	Female	Total
Executive/Administration	4	1	5
Instructional/Research	29	35	64
Other Professionals	8	16	24
Clerical and Secretarial	0	25	25
Service Maintenance	8	1	9
Technical	2	1	3
Total	51	79	130

Revenues, Expenses, and Changes in Net Assets
September 1, 2007 – August 31, 2008

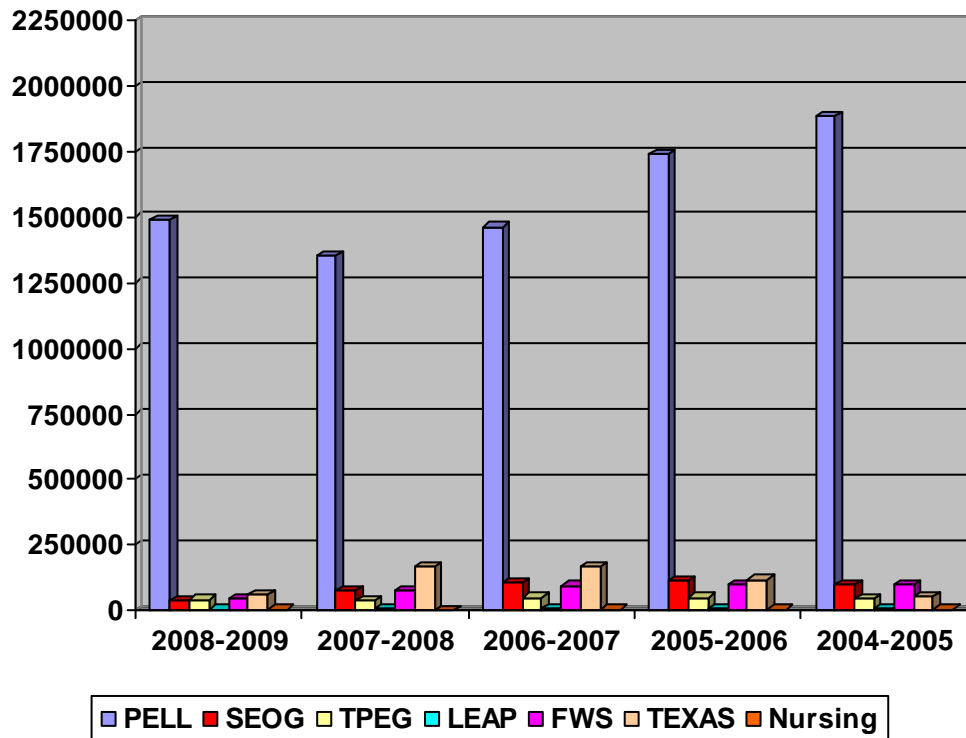
Operating Revenues	2008-2009	Prior Year
Tuition and Fees	2,247,922	2,065,117
Federal Grants and Contracts	2,289,410	2,392,872
State Grants and Contracts	274,038	572,886
Non-Government Grants and Contracts	925	4,920
Sales & Service of Educational Activities	157,976	164,132
Auxiliary Enterprises	1,161,246	1,157,710
Other Operating Revenues	371,080	250,787
Total Operating Revenues	6,502,597	6,608,424

Operating Expenses		
Instruction	5,652,081	6,015,188
Public Service	407,763	258,707
Academic Support	1,775,535	1,658,450
Student Services	1,122,024	1,067,540
Institutional Support	1,747,027	1,562,716
Operation and Maintenance of Plant	1,486,461	1,513,167
Scholarships and Fellowships	736,539	840,393
Auxiliary Enterprises	1,652,661	1,468,121
Depreciations	695,839	699,100
Total Operating Expenses	15,275,930	15,083,382
Operating Income Loss	-8,773,333	-8,474,958

Non-Operating Revenues:		
State Appropriations - General Revenue	4,973,753	4,555,017
Ad-valorem Taxes for Current Operation	4,624,730	4,128,715
Gifts	720,568	303,924
Investment Income	443,378	466,402
Royalty Income	58,763	56,228
Interest on Capital Related Debt	-215,715	-163,933
Loss of Disposition of Capital Assets	0	0
Net Non-Operating Revenues	10,605,477	9,346,353

Net Assets		
Net Assets – Beginning of Year	13,032,979	12,161,584
Net Assets – End of Year	14,865,123	13,032,979
Increase in Net Assets	1,832,144	871,395

**Five Year Trend
Need-Based Aid Received by Students**



Program	2008-2009	2007-2008	2006-2007	2005- 2006	2004- 2005
PELL	1,488,500	1,354,442	* 1,465,000	* 1,740,000	1,885,000
SEOG	36,859	75,330	105,518	114,537	100,000
TPEG	40,000	38,043	47,000	47,000	46,000
LEAP	2,622	6,593	7,234	7,552	6,711
FWS	45,133	76,224	95,940	100,000	100,000
TEXAS	58,820	166,080	165,580	115,570	51,130
Nursing	2,801	591	4,077	2,315	1,599
TOTAL	1,674,735	1,717,303	1,892,349	2,126,974	2,190,440

* estimated

Grants:

PELL

SEOG Supplemental Educational Opportunity Grant

LEAP Leveraging Educational Assistance Partnership (form erly SSIG)

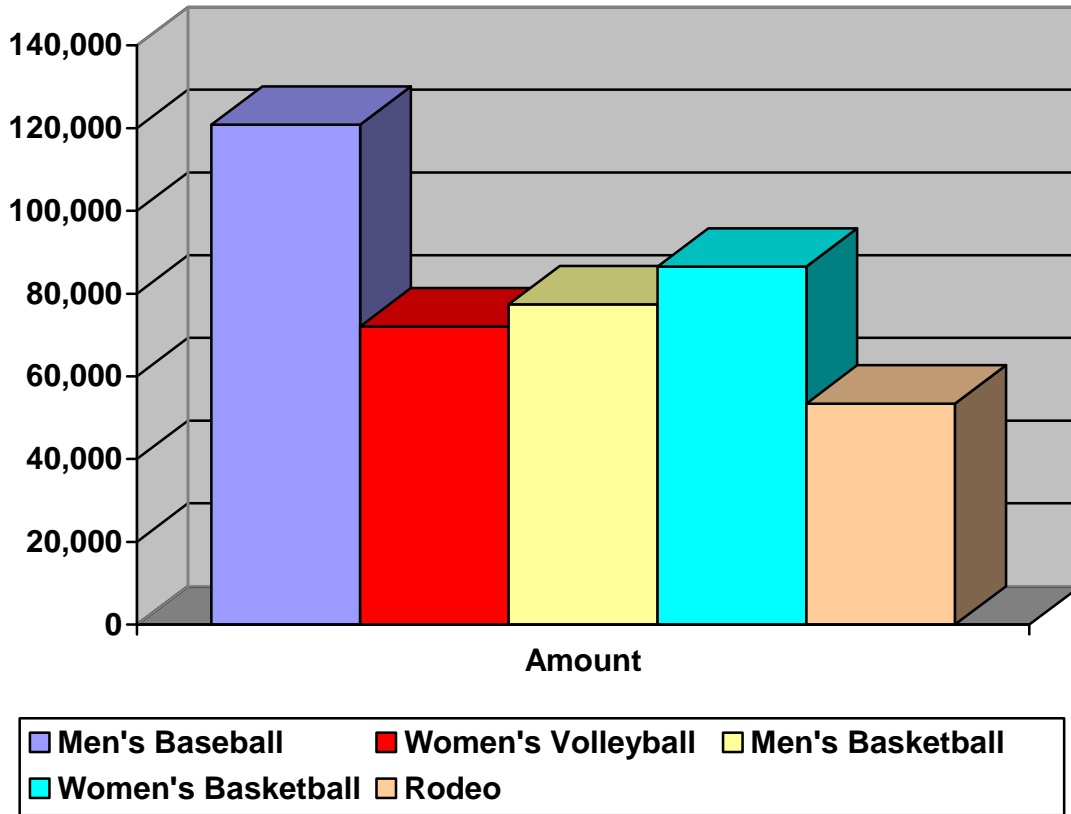
TEXAS Toward Excellence, Access, and Success Grant

TPEG Texas Public Educ ational Grant

Work Study:

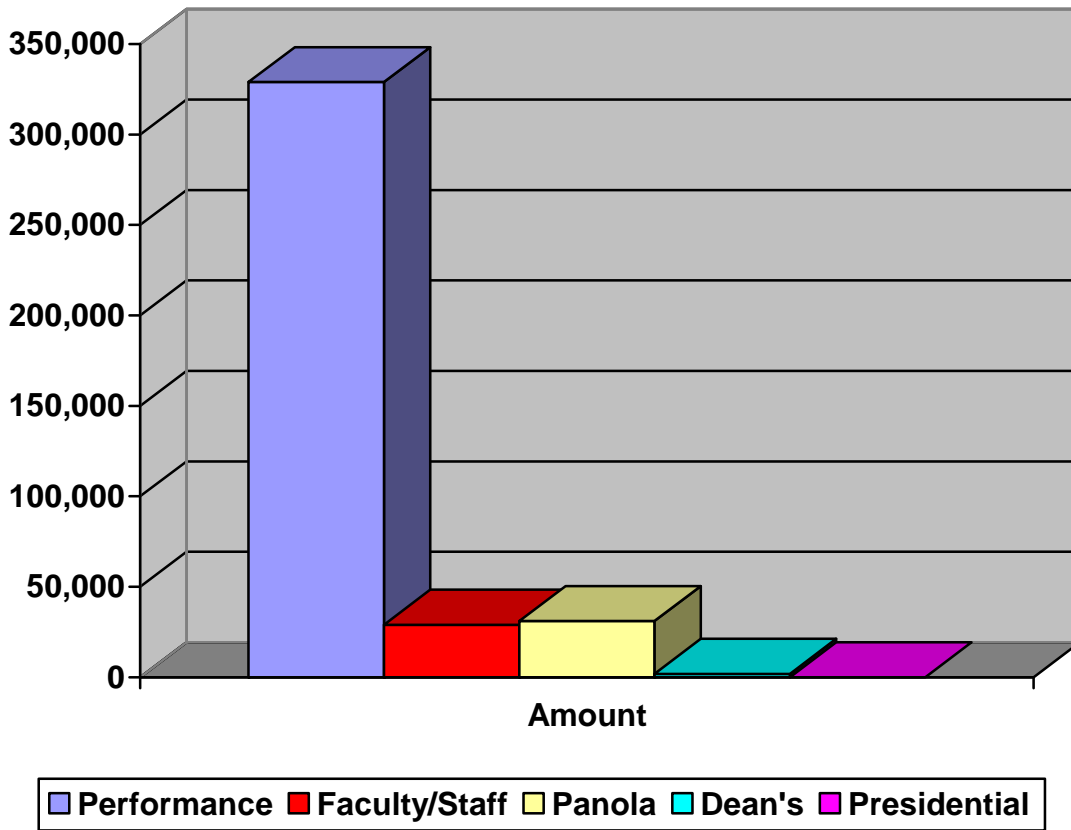
FWS Federal Work Study

Athletic Scholarships (2008 - 2009)



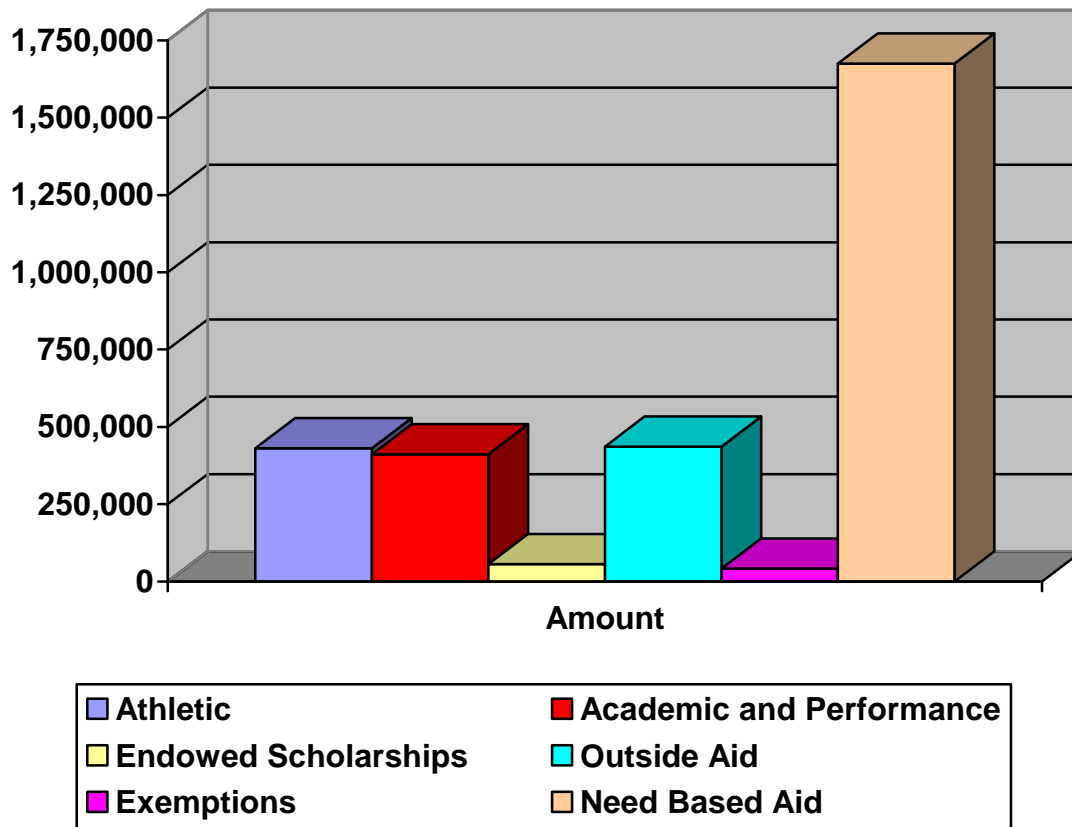
Program	Amount	% Increase/Decrease From Previous Year
Men's Baseball	122,538	1.4%
Women's Volleyball	73,753	2.4%
Men's Basketball	82,950	7.2%
Women's Basketball	95,706	10.7%
Rodeo	56,013	4.9%
TOTAL	\$ 430,960	5.1%

Academic/Performance Scholarships (2008 - 2009)



Program	Amount	% Increase/Decrease From Previous Year
Performance:		
Art	8,219	141%
Band	140,519	13%
Choir	69,936	- 37%
Drama	103,261	56%
Journalism	10,804	70%
Speech	0	- 100%
Total Performance	\$ 332,739	1%
Faculty/Staff	39,407	35%
Panola	30,722	- 1%
Dean's	8,866	368%
TOTAL	\$ 411,734	5%

Summary of Financial Aid/Scholarships (2008 - 2009)

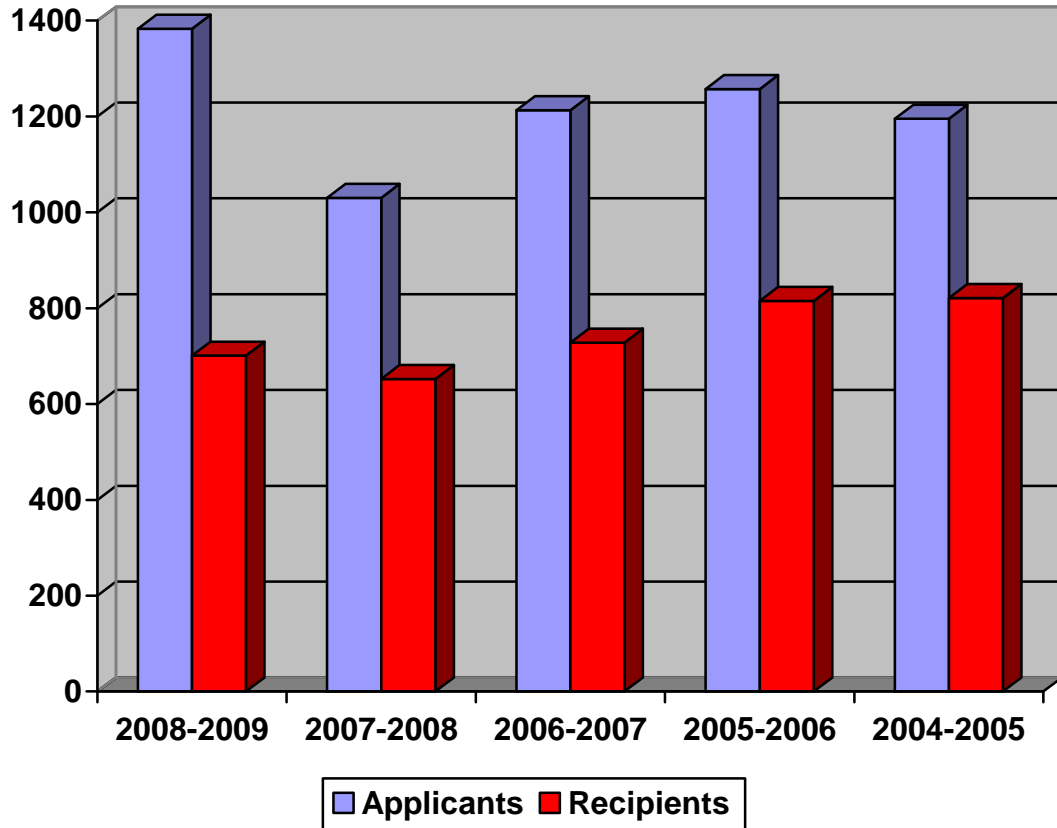


Program	Amount	% Increase/Decrease From Previous Year
Athletic	430,159	5%
Academic and Performance	411,734	5%
Endowed Scholarships	56,355	9%
Outside Aid *	436,084	2%
Exemptions **	41,561	173%
Need Based Aid	1,674,735	- 2%
TOTAL	\$ 3,050,628	1%

* any scholarship or grant not awarded by Panola College

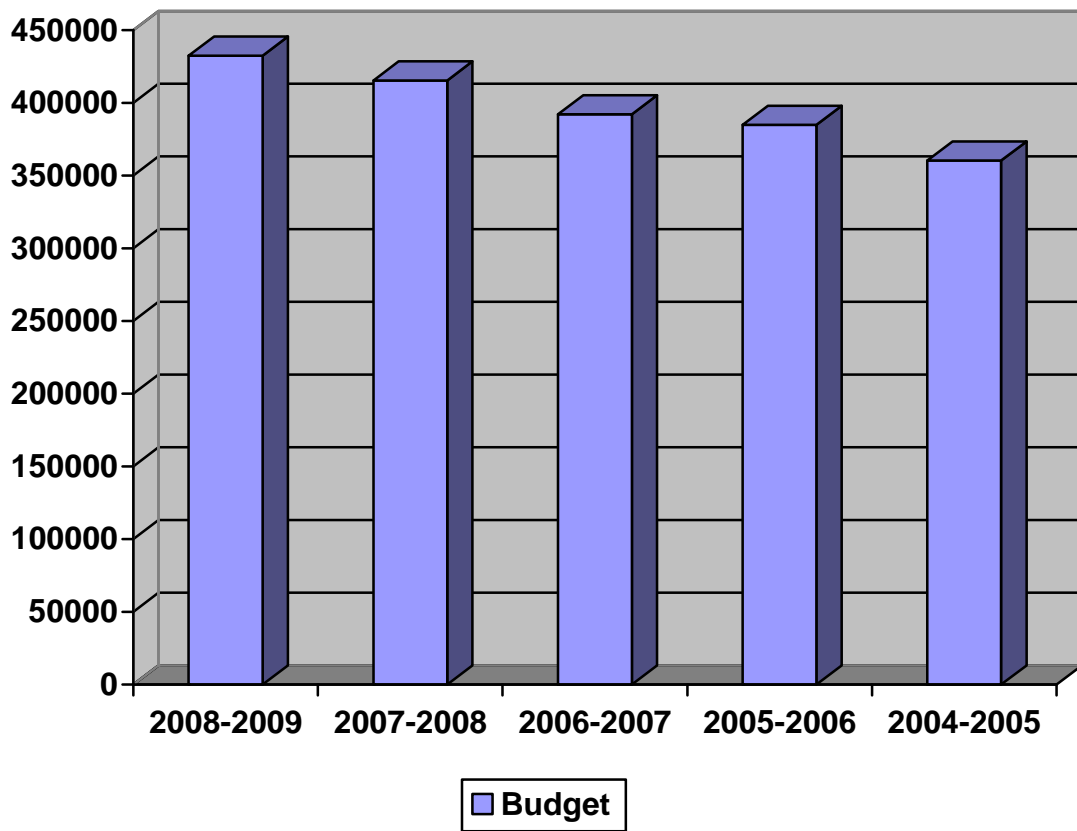
** exemptions are offered by the state for students in special populations

**Five Year Trend
Number of Financial Aid Applicants and Recipients
of Federal or State Aid**



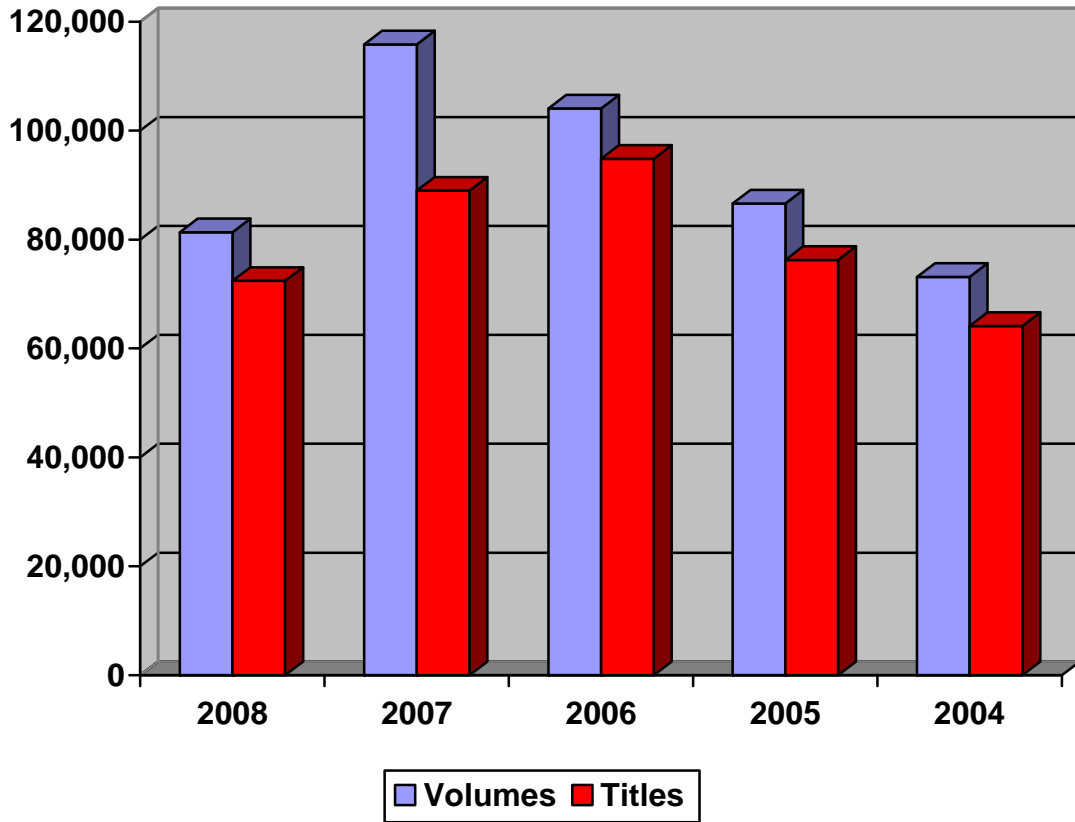
	2008-2009	2007-2008	2006-2007	2005-2006	2004-2005
Applicants	1386	1030	1213	1257	1195
Recipients	701	652	728	821	821
Percent	51%	63%	60%	65%	69%

Library Budget: 2004-2009



Year	2008-2009	2007-2008	2006-2007	2005-2006	2004-2005
Budget	\$432,351	\$415,340	\$392,062	\$384,903	\$360,274

Library Materials: 2004 - 2008

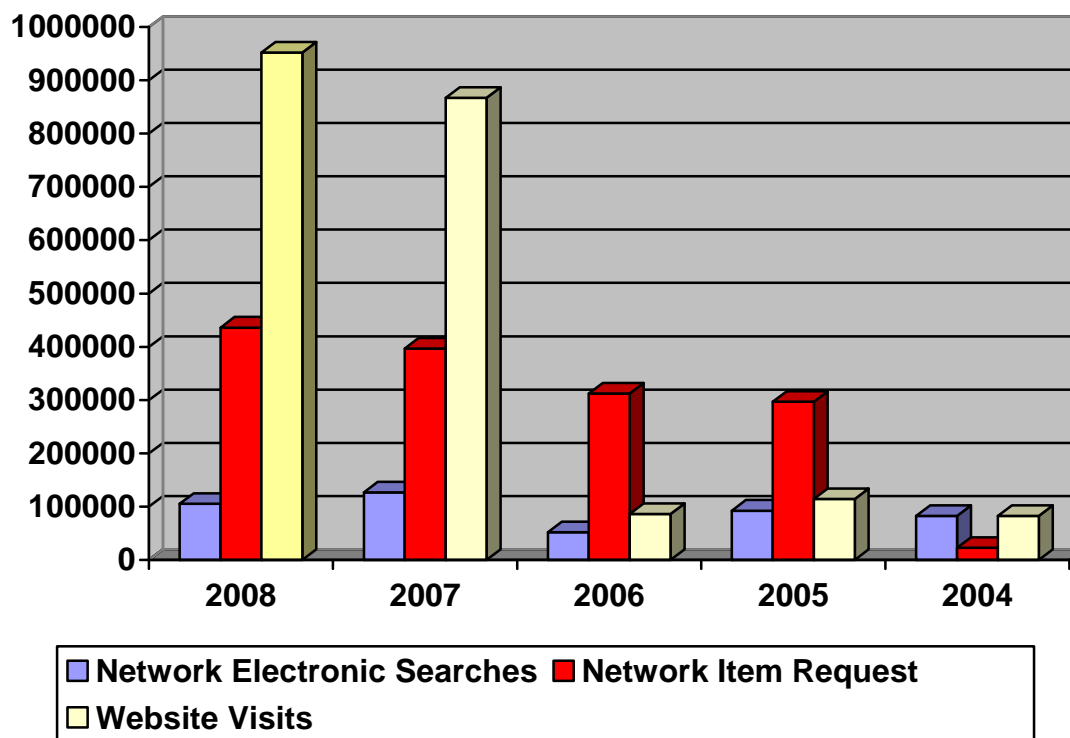


	2008	2007	2006	2005	2004
Volumes	81,337*	115,856	104,086	85,635	73,161
Titles	72,410*	88,992	94,834	76,270	64,121

* The library collection has been reduced in anticipation of the completion of the new library addition and renovation of the existing library building.

Library Services: 2004 - 2008

Databases Usage



Databases Usage	2008	2007	2006	2005	2004
Network Electronic Searches	105,703	127,115	52,336	92,619	82,527
Network Item Requests	435,967	396,716	312,665	297,051	22,970
Library Website Page Hits	951,754	867,103	86,228	114,615	82,872
Circulation Transactions	2008	2007	2006	2005	2004
General Collection	4,128	3,917	4,424	5,255	7,795
Reserve Collection	5,179	1,561	7,514	2,134	1,598
Interlibrary Loans	2008	2007	2006	2005	2004
Lending	85	58	86	43	58
Borrowing	204	166	257	178	266
Information Services to Groups	2008	2007	2006	2005	2004
Presentations	36	44	42	49	64
People Served	879	618	631	387	1,097