



Panola College

Fact Book 2005-2007

Table of Contents

Table of Contents	1
Acknowledgments	4
About Panola College	5
Statement of Vision	6
Mission Statement.....	6
Institutional Goals 2005 - 2010	6
Strategic Planning Objectives 2006 - 2007 Linked to Institutional Goals 2005 - 2010 .	7
Panola College Board of Trustees	9
Administrative Organizational Chart.....	10
Academic and Career / Technical Instruction Organizational Chart.....	11
Student Services Department Organizational Chart	12
Fiscal Affairs Organizational Chart.....	13
Harrison County.....	14
Geography.....	14
Population Statistics.....	14
Marion County	16
Geography.....	16
Population Statistics.....	16
Panola County.....	18
Geography.....	18
Population Statistics.....	18
Shelby County.....	20
Geography.....	20
Population Statistics.....	20
Five Year Fall / Spring Enrollment Report.....	23
Five Year Credit Enrollment By Full-time/Part-time Status Fall Semesters.....	24
Five Year Fall Credit Enrollment By Tuition Status and Geographical Distribution .	25
Five Year Trend of Credit Students By Ethnicity Fall Semesters	26
Five Year Trend of Credit Students by Gender Fall Semesters.....	27
Fall 2006 Credit Students Ethnic/Gender Breakdown.....	28
Five Year Fall Enrollment By Level.....	29
Five Year Trend of Fall Student Headcount Breakdown By Campus.....	30
Fall Distance Learning Duplicated Headcount Breakdown By Mode of Delivery	31
Definition of Distance Learning Modes of Delivery	32
Five Year Trend for Fall Distance Learning Enrollment Unduplicated Head Count...	33
Five Year Trend Fall Student Distribution	34
Fall Contact Hours By Program Area: Academic and Career / Technical	35
Fall Contact Hours By Campus: Academic and Career / Technical.....	36
Fall Contact Hours By Campus: Continuing Education.....	37
Five Year Trend Fall Credit Academic / Career and Technical Full-Time Equivalent (FTE*).....	38
Panola College: Programs Offered	39
Fall 2006 Enrollment by Declared Major Field of Study	40
Five Year Trend Total Number of Degrees and Certificates Awarded	42
Percent of First Time, Full-time College Students Who Entered Fall 2003 (Cohort Year 2003) and Completed* by Fall 2006.....	43
Percentage of the Fall 2003 Cohort Who Completed* by Fall 2006.....	43

Percent of First Time, Full-time Student Athletes Receiving Athletically-related Student Aid (Athletic Sub-cohort 2003) who Entered Fall of 2003 and Completed* by Fall 2006	44
Percentage of the Fall 2003 Athletic Sub-cohort Who Completed* by Fall 2006	44
Percent of First Time, Full-time Student Athletes Receiving Athletically-related Student Aid (Athletic Sub-cohort 2003) By Sports Category Who Completed By Fall 2006.....	45
Number of Full-time Faculty By Degree and Gender (Fall 2006)	46
Full-time Employees By Ethnicity and Gender (Fall 2006)	47
Full-time Employees By Activity and Gender (Fall 2006).....	48
Revenues, Expenses, and Changes in Net Assets September 1, 2005 – August 31, 2006	49
Five Year Trend Need-Based Aid Received by Students.....	50
Athletic Scholarships (2006 - 2007)	51
Academic/Performance Scholarships (2006 - 2007)	52
Summary of Financial Aid/Scholarships (2006 - 2007)	53
Five Year Trend Number of Financial Aid Applicants and Recipients of Federal or State Aid.....	54
Library Budget: 2002-2007	55
Book Collection: 2002 - 2006.....	56
Library Services: 2002 - 2006	57



Introduction

Acknowledgments

This edition of the Panola College FACTBOOK reflects the diversity of the institution and provides a convenient and authoritative source of information about the college. Without the aid of the President's Office, the Vice President and Dean of Instruction's Office, the Fiscal Affairs Office, Financial Aid, the Registrar, the Director of Administrative Services, and the M. P. Baker Library, the compilation of the data in the book would not have been possible.

Chris Blair

Chris Blair

Director of Institutional Research / Math Instructor
Panola College
1109 West Panola
Carthage, TX 75633
903-693-2075

About Panola College

In its sixty years of existence, Panola College has grown both in size and in the scope of services offered to its students and community. The college, established in 1947, was created to provide young people with the opportunity to earn the first two years of a traditional baccalaureate degree. The services the College offers have expanded greatly to meet community needs, providing a wide range of educational and training opportunities to citizens of all ages.

The College began operating in temporary buildings before the first two permanent buildings were erected in 1949. A 35-acre campus at the junction of Texas State Highway 315 and U.S. 79 in Carthage has been the school's home since its inception. There are now 16 permanent buildings with more than 135 acres available for future expansion. In addition to a comprehensive community college in Panola County, the College offers a variety of instructional opportunities in a four-county service area including Harrison, Marion, and Shelby Counties. These three counties became part of the College's official service area by legislative act in 1995. As well as the main campus in Carthage, the college also has sites in Center and Marshall, Texas to help meet the educational needs of its service area.

Enrollment at the College has grown from fewer than 100 students at the first registration in January of 1948 to its highest enrollment of 1,927 in the fall of 2005. The College provides many services that enrich the lives of individuals in the region.

Statement of Vision

Panola College is committed to excellence in instructional programs, student services, service to the community, and leadership in economic development and cultural enrichment of the region.

Mission Statement

Panola College shapes its mission around the needs of the people within its service area. As a two-year public community institution, Panola College is dedicated to providing excellence in education for its constituents. The range of educational offerings includes university transfer programs, technical and workforce programs, developmental courses designed to remedy academic deficiencies; and continuing education to enrich lives and improve skills. Our aim is to help each student achieve his or her full potential and to contribute to the further development of society.

Institutional Goals 2005 - 2010

1. Provide excellence in teaching and to develop and revise curricula to meet the needs of the community.
2. To maintain and refine support systems for enhancing student success.
3. To provide appropriate facilities and a quality and productive work, study, living and learning environment.
4. To maintain a strong commitment to excellence through professional development.
5. To seek additional resources to support the College's mission.
6. To distribute resources in a manner that is productive, efficient and consistent with the College's mission.
7. To provide College systems and practices that provide effective support and ensure public accountability.
8. To support the College's commitment to expanded enrollment, access, equity and diversity.
9. To provide leadership in the cultural and economic development of the College's service area.
10. To seek out and cultivate partnerships beneficial to Panola College.

Strategic Planning Objectives 2006 - 2007
Linked to Institutional Goals 2005 - 2010

- 1.1 Develop Leadership Academy
- 1.2 Develop excellence in teaching award
- 1.3 Develop leadership opportunities for faculty
- 1.4 Survey business and industry to determine instructional needs

- 2.1 Refine One-Stop Shop
- 2.2 Develop criteria and explore idea of Honors Award Program
- 2.3 Continue to refine first-year program
- 2.4 Expand tutoring process and evaluate
- 2.5 Review and expand student organizations and projects (field trips), service learning partnerships, and instruction
- 2.6 Develop opportunities for students/faculty/staff to interact
- 2.7 Provide transportation for fans to attend athletic away events
- 2.8 Increase employee participation in Panola College events
- 2.9 Target GED students for college enrollment (scholarship program)
- 2.10 Improve retention rate

- 3.1 Expand dorm Internet access
- 3.2 Expand wireless hotspots
- 3.3 Continue to provide new, technology-equipped classrooms
- 3.4 Formalize a wellness program and include off-campus centers
- 3.5 Create partnerships for a swimming pool
- 3.6 Continue campus beautification project
- 3.7 Continue to review safety protocol
- 3.8 Reconsider smoking policy

- 4.1 Continue to provide grant writing workshop on campus
- 4.2 Continue to provide leadership development for faculty/staff
- 4.3 Coordinate PC training to meet the college's diverse needs and write plan
- 4.4 Continue to establish partnerships for educational and professional development

- 5.1 Research and write a title grant
- 5.2 Conduct an annual campaign

- 6.1 Review the budgeting process
- 6.2 Continue to set up summer programs

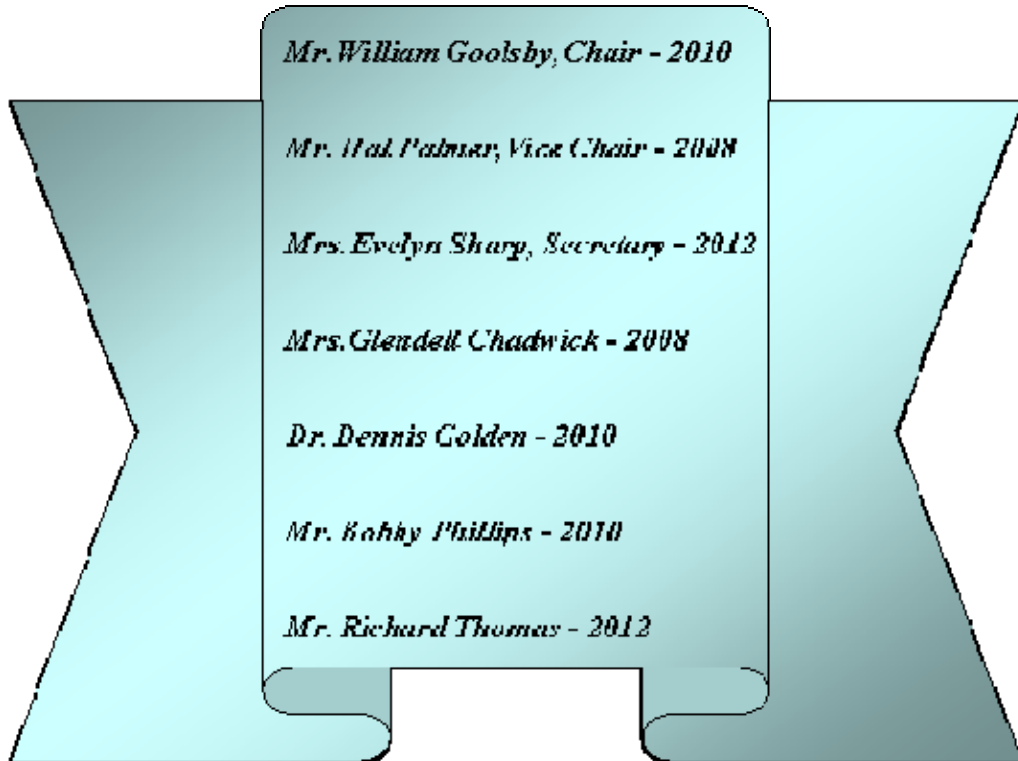
- 7.1 Expand use of imaging system
- 7.2 Expand use of electronic forms
- 7.3 Develop web reports
- 7.4 Develop new student evaluation systems

- 8.1 Actively recruit people of diverse backgrounds
- 8.2 Expand enrollment and scholarship programs (creative use of scholarships)
- 8.3 Create and administer survey to examine scheduling of classes
- 8.4 Review recruitment practices
- 8.5 Explore possibility of Senior College

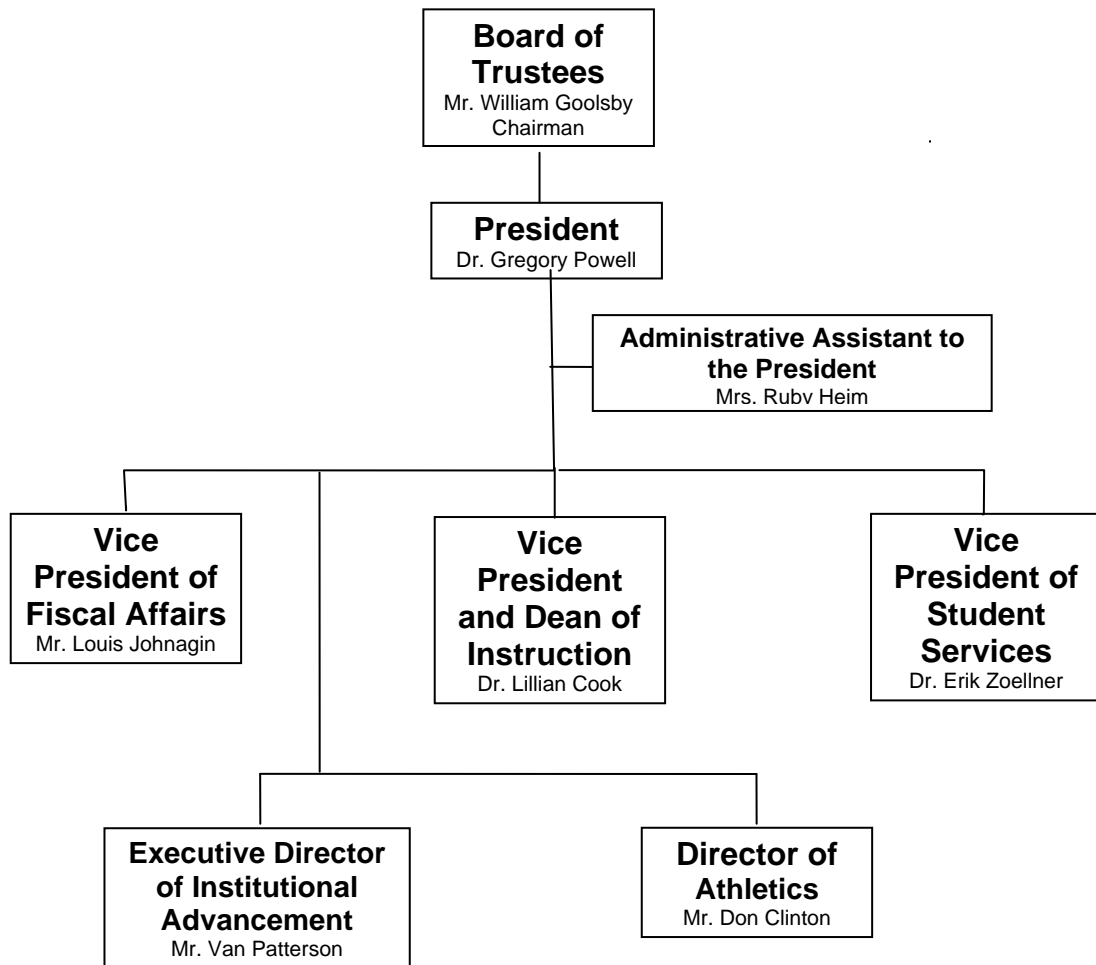
- 9.1 Expand economic development through partnerships based on training funds
- 9.2 Get listing of economic development board lists
- 9.3 Offer fine and performing arts programs outside Panola County
- 9.4 Provide exhibit space (in new library)

- 10.1 Continue to develop and/or maintain relationships with ISDs and universities, government, and non-profit groups
- 10.2 Continue to investigate telemedicine opportunities
- 10.3 Develop student health services through East Texas Medical Center
- 10.4 Continue partnerships with businesses and field training
- 10.5 Continue to develop distance learning course exchanges with other colleges

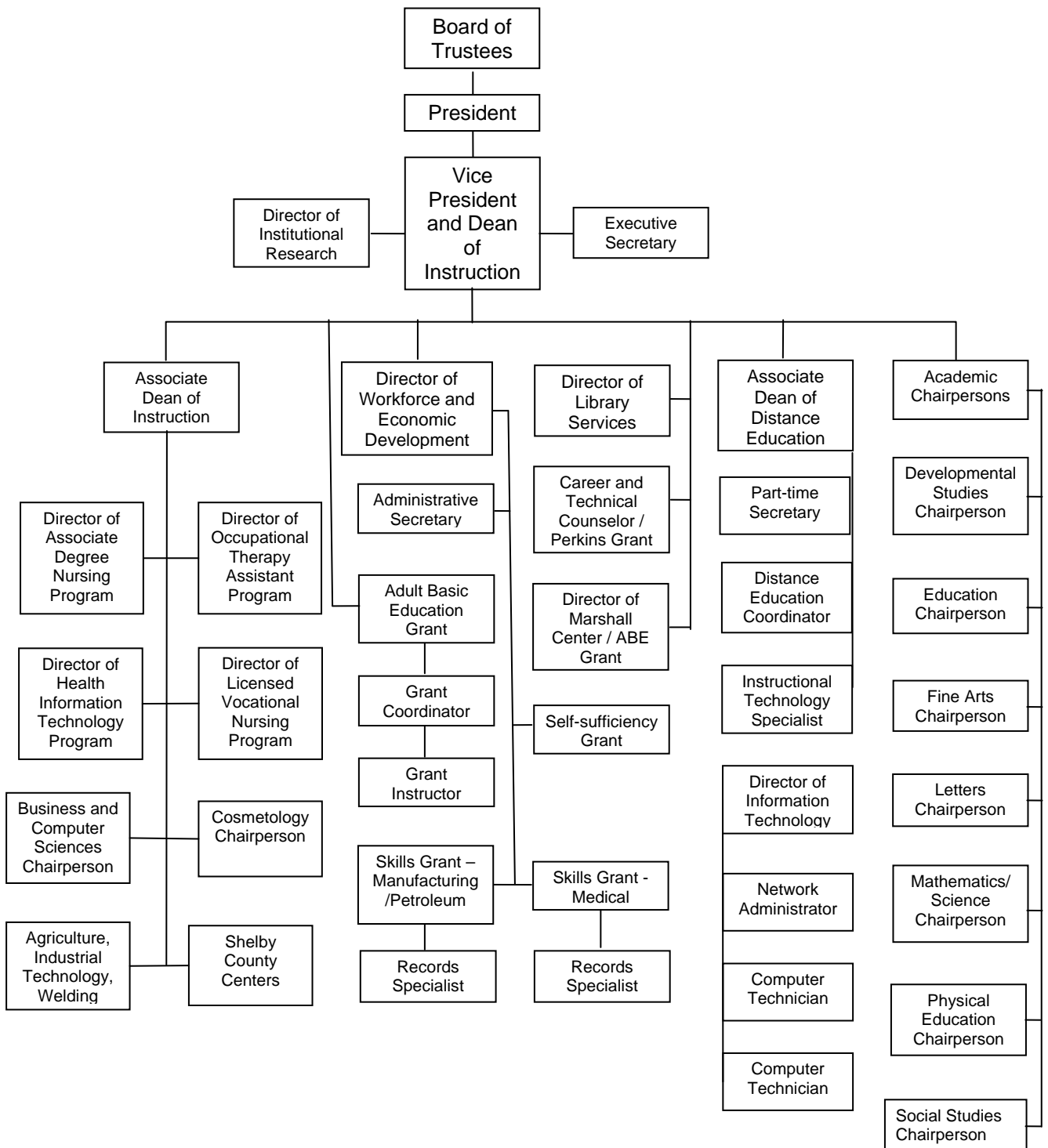
Panola College Board of Trustees



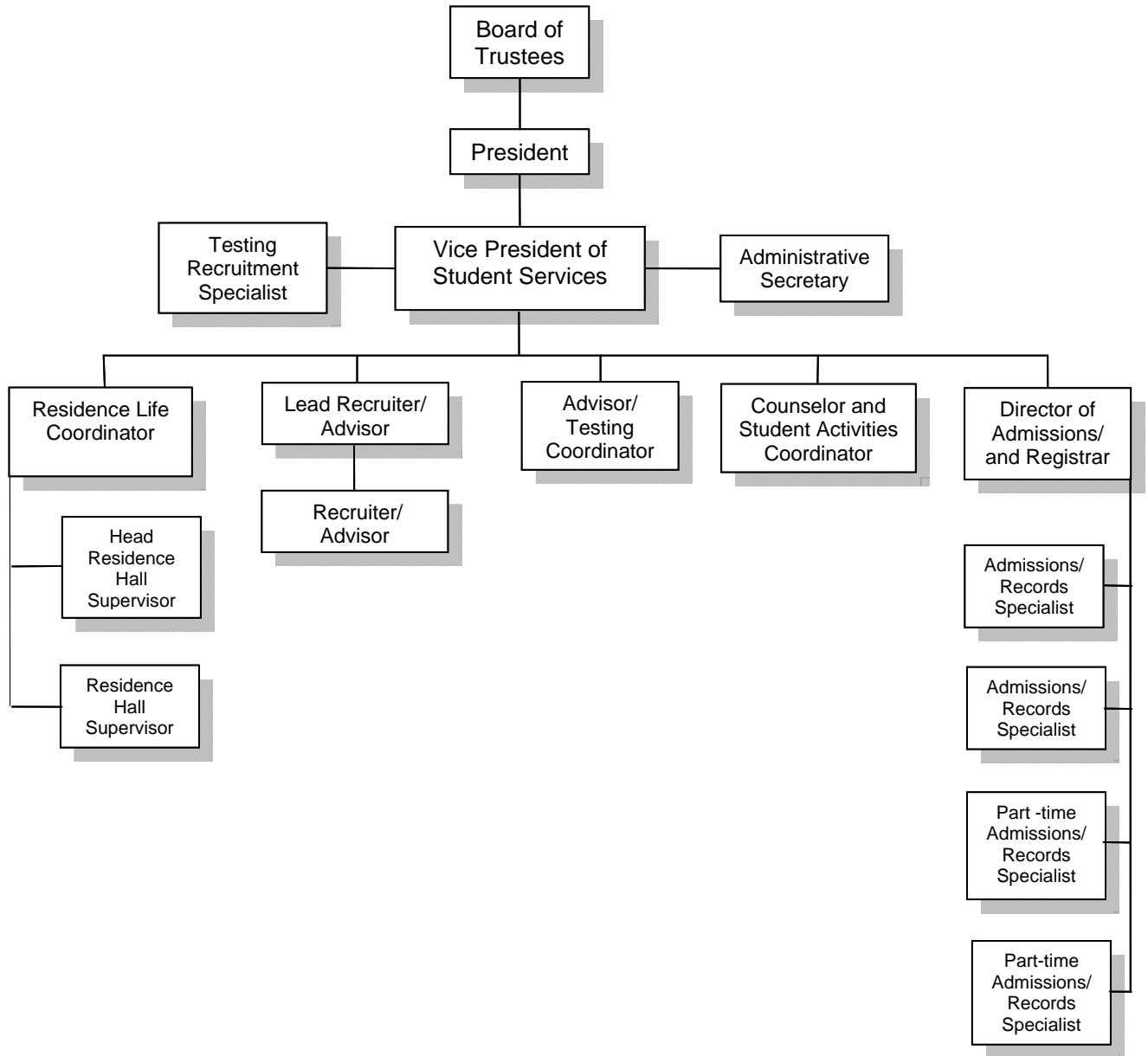
Administrative Organizational Chart



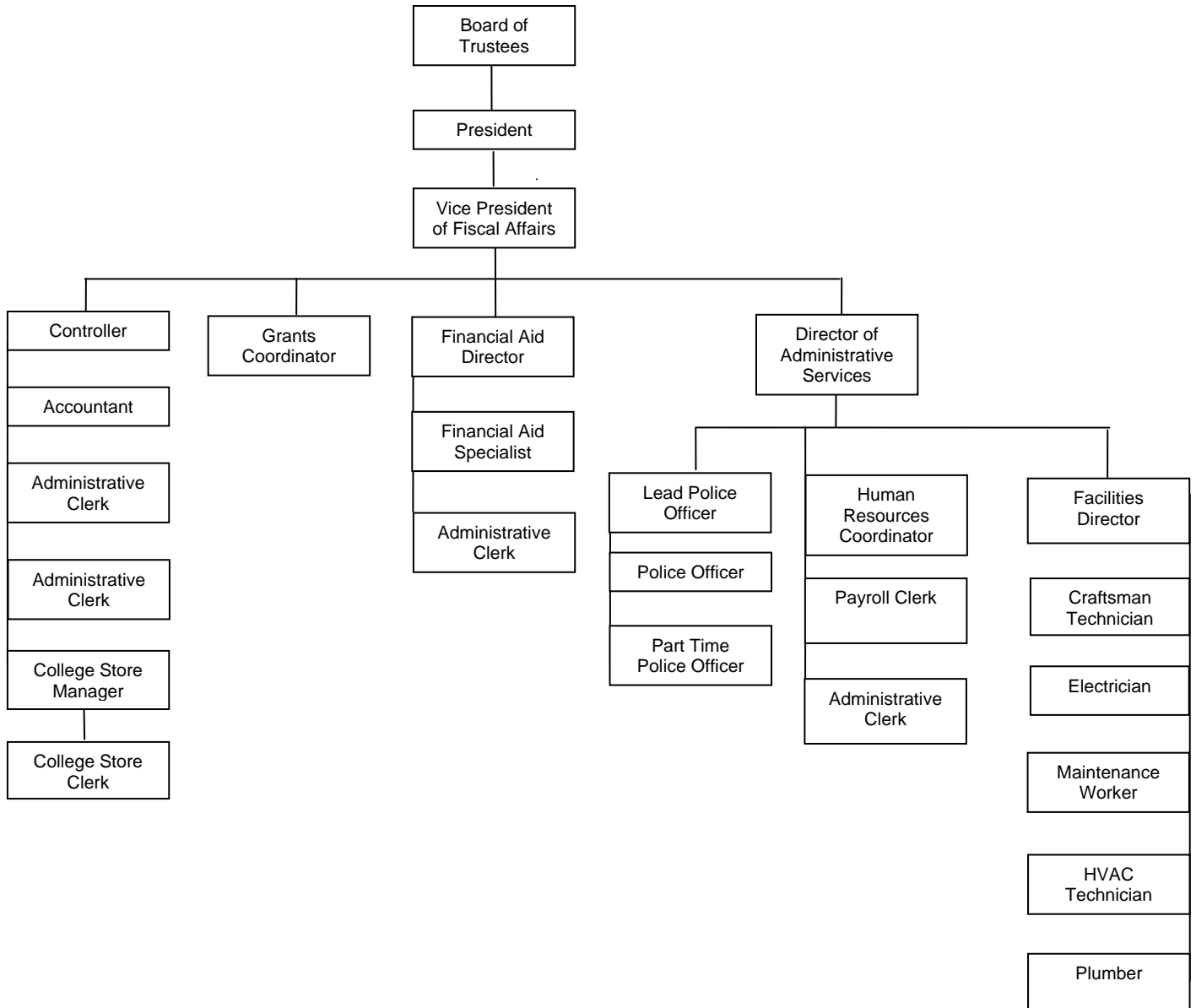
Academic and Career / Technical Instruction Organizational Chart



Student Services Department Organizational Chart



Fiscal Affairs Organizational Chart



Harrison County

Geography

The county of Harrison is the 49th largest in population of the 254 counties in Texas with an estimated population of 63,459 in July 2005.¹ Harrison County experienced a 2.2% increase in population since the 2000 census compared to the state increase of 9.6%. The county seat is Marshall (24,006) and Panola College's Marshall Center is housed in this city in the Marshall Mall. Other towns found within the county include Elysian Fields (300); Hallsville (2,897); Harleton (260); Karnack (775); Waskom (2,129); and part of Longview. Harrison County is a metro county which lies within the East Texas Workforce Planning region, administered by the Technology Partnership Organization.

The county consists of 898 square miles with a population density of 69.1 residents per square mile in 2000. The average density in Texas is 79.6 persons per square mile. The county is over half forested and includes the Sabine River and Caddo Lake.

Population Statistics

The Census Bureau estimates the county's race/ethnic distribution in 2005 to be:²

	<i>Harrison County</i>	<i>Texas</i>
White	68.3%	49.2%
Black	23.1%	11.7%
Hispanic ³	7.4%	35.1%
Asian/Pacific Islander	0.6%	3.4%
Native American	0.4%	0.7%
Report 2 or more races	2.9%	11.7%

The 2000 Census estimates for Texas show a population composition according to age as follows:⁴

<i>Age</i>	<i>Harrison County</i>	<i>Texas</i>
0-4	6.5%	7.8%
5-15	15.3%	15.7%
16-24	15.1%	15.2%
25-44	27.0%	31.1%
45-64	23.0%	20.2%
65 plus	13.1%	9.9%

¹ July, 2005 population estimates for Texas counties and towns were obtained from the Texas State Data Center and Office of the State Demographer

² U. S. Census Bureau Texas Quick Facts population estimates, 2005

³ Hispanics may be of any race, so also are included in other applicable race categories. For this reason, the total percentage may be more than 100%

⁴ Profile of general demographic characteristics 2000, US Census Bureau, Census 2000, Harrison County, Texas

If the population cohort 45 and over is higher than the state average, as it is in Harrison County, this suggests a stable, mature population comprised of mainly "empty-nesters," retirees and the aged. When the 25-44-age cohort is higher than the state average, this is a healthy economic situation since this group contains the greatest share of the productive labor force. This is not the case in Harrison County. Decreases over time in this group, especially when similar changes are not occurring statewide, can indicate a poor labor market.

The county had about 23,087 households in 2000 according to the census. This represents an average of 2.62 persons per household. Statewide, there are 2.74 persons per household in 2000 with roughly 7.39 million Texas households. Nearly 40% (38.8%) of Harrison county households have children under 18 in residence – these are our potential college students.

Local industry consists primarily of manufacturing, education, health and social services, and retail trade. Altogether, there are about 26,290 people over age sixteen employed. The median household income for 2003 was \$34,436, compared with a state median income of \$39,967. The unemployment rate in the county is 6.7% compared to 6.6% statewide (year 2003 data)⁵. According to December, 2006 monthly reports, county-wide 6774 people are receiving food-stamp assistance with 337 receiving basic TANF.⁶ It has been estimated that 16.1% of Harrison County residents live below the poverty level, compared to 16.2% rate statewide. Eight thousand, three hundred forty-three people are Medicaid eligible, including families and children.⁷

There are six independent school districts in the county: Elysian Fields, Hallsville, Harleton, Karnack, Marshall, and Waskom ISD with a grade 7-12 enrollment of 6129 and an average drop out rate of 0.7% compared to the state dropout rate of 0.9%.⁸

Tracking graduates from FY 2005 shows that 44% of Elysian Fields graduates, 5% of Hallsville graduates, 14% of Marshall graduates, and 57% of Waskom graduates who were known to have enrolled in a public Texas college for fall 2005 enrolled in Panola College. Panola College information was not available from this source for Harleton or Karnack ISDs.⁹

⁵ Texas WorkForce Commission, Labor Market Information Department, 2003

⁶ Temporary Assistance for Needy Families, 2003 data

⁷ Texas Department of Health, Selected Facts for Harrison County - 2000

⁸ Texas Education Agency Secondary School Completion and Dropouts in Texas Public Schools, Supplemental District Data, 2004-2005

⁹ Texas Higher Education Coordinating Board and Texas Education Agency publication. Note this is not the percentage of the entire graduating class, but only those who were known to enroll in a Texas public college in fall 2005

Marion County

Geography

The county of Marion is the 185th largest in population of the 254 counties in Texas with an estimated population of 10,952 as of July, 2005.¹⁰ The Marion County population increased by an estimated 0.1% since the 2000 census, compared to the state rate of population growth of 9.6%. The county seat of Marion is Jefferson (1,992) which is by far the most populated city in the county. Marion County is a rural county which lies within the East Texas Workforce Planning region, administered by the Technology Partnership Organization.

The county consists of 381 square miles with a 2000 population density estimate of 28.7 residents per square mile. The average density in Texas was estimated to be 79.6 persons per square mile for that same time period. The county is three-quarters forested with pines and hardwoods. The watershed drains to Caddo Lake, Lake O' the Pines, and Cypress Bayou

Population Statistics

The Census Bureau estimates the county's race/ethnic distribution in 2005 to be:¹¹

	<i>Marion County</i>	<i>Texas</i>
White	71.4%	49.2%
Black	22.9%	11.7%
Hispanic ¹²	3.7%	35.1%
Asian/Pacific Islander	0.2%	3.4%
Native American	0.9%	0.7%
Report 2 or more races	1.2%	1.1%

The 2000 Census estimates for Texas show a population composition according to age as follows:¹³

<i>Age</i>	<i>Marion County</i>	<i>Texas</i>
0-4	5.6%	7.8%
5-15	12.7%	15.7%
16-24	10.5%	15.2%
25-44	23.6%	31.1%
45-64	28.4%	20.2%
65 plus	19.2%	9.9%

¹⁰ July, 2005 population estimates for Texas counties and towns were obtained from the Texas State Data Center and Office of the State Demographer

¹¹ U. S. Census Bureau Texas Quick Facts population estimates, 2005

¹² Hispanics may be of any race, so also are included in other applicable race categories. For this reason, the total percentage may be more than 100%

¹³ Profile of general demographic characteristics 2000, US Census Bureau, Census 2000, Marion County, Texas

If the population cohort 45 and over is higher than the state average as it is in Marion County, this suggests a stable, mature population comprised of mainly "empty-nesters," retirees and the aged. When the 25-44-age cohort is higher than the state average, this is a healthy economic situation since this group contains the greatest share of the productive labor force. Decreases over time in this group as is the case in Marion County, especially when similar changes are not occurring statewide, can indicate a poor labor market.

The county had about 4,610 households in 2000 according to the census. This represents an average of 2.35 persons per household. Statewide, there are 2.82 persons per household in 2000 with roughly 7.39 million Texas households. Twenty-nine percent of the households in Marion County have children under 18 in residence.

Local industry consists primarily of tourism, timber and food processing. Altogether, there are about 4,082 people sixteen years of age or older employed. The median household income in 2003 was \$24,401 compared to the state median household income of \$39,967. The unemployment rate in the county is 9.3% compared to 6.6% statewide (year 2003 data).¹⁴ During the month of December, 2006 county-wide 1903 people are receiving food-stamp assistance with 105 receiving basic TANF.¹⁵ It has been estimated that 21.2% of Marion County residents live below the poverty level, compared to 16.2% rate statewide. Two thousand, two hundred nine people are Medicaid eligible, including families and children.¹⁶

There is one independent school district in the county: Jefferson ISD with a grade 7-12 enrollment of 727 students and an average drop out rate of 1.0% compared to the state dropout rate for the same age level of 0.9%.¹⁷

¹⁴ Texas WorkForce Commission, Labor Market Information Department, 2003

¹⁵ Temporary Assistance for Needy Families

¹⁶ Texas Department of Health, Selected Facts for Marion County - 2000

¹⁷ Texas Education Agency Secondary School Completion and Dropouts in Texas Public Schools, Supplemental District Data, 2004-2005

Panola County

Geography

The county of Panola has the 104th largest in population of the 254 counties in Texas with an estimated population of 22,997 in July, 2005.¹⁸ Panola County's population increased an estimated 1.1% since the 2000 census, compared to the state rate of population growth of 9.6%. The city of Carthage, with an estimated population of 6,611, is the county seat and is the site of Panola College. Other towns in the county include: Beckville (760); Clayton (79); DeBerry (191); Gary (307); Long Branch (181); Panola (296); and Tatum (1188). Panola County is a rural county which lies within the East Texas Workforce service delivery area and the East Texas Quality Workforce Planning region, administered by the Technology Partnership Organization.

The county consists of 800 square miles with a 2000 population density 28.4 residents per square mile. The average density in Texas is 79.6 persons per square mile. Panola county is 60% forested, rolling plains that are broken by the Sabine River, Murvaul Creek and Toledo Bend Reservoir.

Population Statistics

The Census Bureau estimates the county's race/ethnic distribution in 2005 to be:¹⁹

	<i>Panola County</i>	<i>Texas</i>
White	76.2%	49.2%
Black	17.4%	11.7%
Hispanic ²⁰	5.1%	35.1%
Asian/Pacific Islander	0.4%	3.4%
Native American	0.4%	0.7%
Report 2 or more races	0.7%	1.1%

The 2000 Census estimates for Texas shows a population composition according to age as follows:²¹

<i>Age</i>	<i>Panola County</i>	<i>Texas</i>
0-4	6.2%	7.8%
5-15	14.1%	15.7%
16-24	14.1%	15.2%
25-44	25.1%	31.1%
45-64	24.6%	20.2%
65 plus	15.9%	9.9%

¹⁸ July, 2005 population estimates for Texas counties and towns were obtained from the Texas State Data Center and Office of the State Demographer

¹⁹ U. S. Census Bureau Texas Quick Facts population estimates, 2005

²⁰ Hispanics may be of any race, so also are included in other applicable race categories. For this reason, the total percentage may be more than 100%

²¹ Profile of general demographic characteristics 2000, US Census Bureau, Census 2000, Panola County, Texas

If the population cohort 45 and over is higher than the state average, as it is in Panola County, this suggests a stable, mature population comprised of mainly "empty-nesters," retirees and the aged. When the 25-44-age cohort is higher than the state average, this is a healthy economic situation since this group contains the greatest share of the productive labor force. Decreases over time in this group, as is the case with Panola County, especially when similar changes are not occurring statewide, can indicate a poor labor market.

The county had about 8,821 households in 2000 according to the census. This represents an average of 2.53 persons per household. Statewide, there are 2.82 persons per household in 2000 with roughly 7.39 million Texas households. Thirty-six percent of the households in Panola County have children under 18 in residence.

Local industry consists primarily of gas processing, oil-field operations, agribusinesses, forestry, and other varied types of manufacturing. Altogether, there are about 9,075 people age 16 or older employed in Panola County. The median household income in 2003 was \$34,255 compared to the state median household income of \$39,967. The unemployment rate in the county is 7.8% compared to 6.1% statewide (year 2003 data).²² In December, 2006 county-wide 2224 people are receiving food-stamp assistance with 75 receiving basic TANF.²³ It has been estimated that 14.6 % of Panola County residents live below the poverty level, compared to 16.2% rate statewide. Three thousand, two hundred thirteen people are Medicaid eligible, including families and children.²⁴

There are three independent school districts and one charter school in the county: Beckville, Carthage and Gary ISD and Panola Charter School with a grade 7-12 enrollment of 1942 and an average drop out rate of 0.8% compared to the state dropout rate of 0.9%.²⁵

Tracking graduates from FY 2005 shows that 63% of Carthage graduates who were known to have enrolled in a Texas public college for fall 2005 enrolled in Panola College. Panola College information was not available from this source for Beckville, ISD, Gary ISD or the Panola Charter School.²⁶

²² Texas WorkForce Commission, Labor Market Information Department, 2003

²³ Temporary Assistance for Needy Families

²⁴ Texas Department of Health, Selected Facts for Panola County - 2000

²⁵ Texas Education Agency Secondary School Completion and Dropouts in Texas Public Schools, Supplemental District Data, 2004-2005

²⁶ Texas Higher Education Coordinating Board and Texas Education Agency publication. Note this is not the percentage of the entire graduating class, but only those who were known to enroll in a Texas public college in fall 2005.

Shelby County

Geography

The county of Shelby is the 96th largest in population of the 254 counties in Texas with an estimated population of 26,346 in July 2005.²⁷ Shelby County's population has had an estimated increase of 4.4% since the 2000 census, compared to the state rate of population growth of 9.6%. The county seat of Shelby is Center (5,781), so named because of its location in the center of the county. Panola College's Shelby College Center and Shelby Regional Training Center are located in Center, Texas. Other towns in the county include Timpson (1,144), Tenaha (1,100), Joaquin (946), and Shelbyville (215).

The county consists of 794 square miles with a 2000 population density 31.8 residents per square mile. The average density in Texas is 79.6 persons per square mile. The land is partly hills with much bottom land; 67,762 acres is national forest land. Bodies of water include Attoyac Bayou and Toledo Bend Reservoir with many other streams.

Population Statistics

The Census Bureau estimates the county's race/ethnic distribution in 2005 to be:²⁸

	<i>Shelby County</i>	<i>Texas</i>
White	65.5%	49.2%
Black	18.1%	11.7%
Hispanic ²⁹	15.6%	35.1%
Asian/Pacific Islander	4.0%	3.4%
Native American	0.4%	0.7%
Report 2 or more races	0.5%	1.1%

The 2000 Census estimates for Texas show a population composition according to age as follows:³⁰

<i>Age</i>	<i>Shelby County</i>	<i>Texas</i>
0-4	7.0%	7.8%
5-15	15.1%	15.7%
16-24	13.4%	15.2%
25-44	25.8%	31.1%
45-64	22.3%	20.2%
65 plus	16.5%	9.9%

²⁷July, 2005 population estimates for Texas counties and towns were obtained from the Texas State Data Center and Office of the State Demographer

²⁸ U. S. Census Bureau Texas Quick Facts population estimates, 2005

²⁹ Hispanics may be of any race, so also are included in other applicable race categories. For this reason, the total percentage may be more than 100%

³⁰ Profile of general demographic characteristics 2000, US Census Bureau, Census 2000, Shelby County, Texas

If the population cohort 45 and over is higher than the state average as it is in Shelby County, this suggests a stable, mature population comprised of mainly "empty-nesters", retirees and the aged. When the 25-44-age cohort is higher than the state average, this is a healthy economic situation since this group contains the greatest share of the productive labor force. Decreases over time in this group, as is the case in Shelby County, especially when similar changes are not occurring statewide, can indicate a poor labor market.

The county had about 9,595 households in 2000 according to the census. This represents an average of 2.59 persons per household. Statewide, there are 2.82 persons per household in 2000 with roughly 7.39 million Texas households. Thirty-seven percent of the households in Shelby County have children under 18 in residence.

Local industry consists primarily of broiler, egg production, cattle, timber and tourism. Altogether, there are about 9,801 people age 16 or older employed in Shelby County. The median household income in 2003 was \$28, 575 compared to the state median household income of \$39,967. The unemployment rate in the county is 8.2% compared to 6.6% statewide (year 2003 data).³¹ In December, 2006 county-wide 3591 people are receiving food-stamp assistance with 164 receiving basic TANF.³² It has been estimated that 18.5% of Shelby County residents live below the poverty level, compared to 16.2% rate statewide. Five thousand, six people are Medicaid eligible, including families and children.³³

There are six independent school districts in the county: Center, Excelsior, Joaquin, Shelbyville, Tenaha, and Timpson ISD with a grade 7-12 enrollment of 2,289 and an average drop out rate of 0.5% compared to the state dropout rate of 0.9%.³⁴

Tracking graduates from FY 2005 shows that 50% of Center graduates, 74% of Joaquin graduates, 55% of Shelbyville graduates, and 59% of Timpson graduates who were known to have enrolled in a Texas public college for Fall 2005 enrolled in Panola College. Panola College information was not available from this source for Tenaha.³⁵

³¹ Texas WorkForce Commission, Labor Market Information Department, 2003

³² Temporary Assistance for Needy Families

³³ Texas Department of Health, Selected Facts for Shelby County - 2000

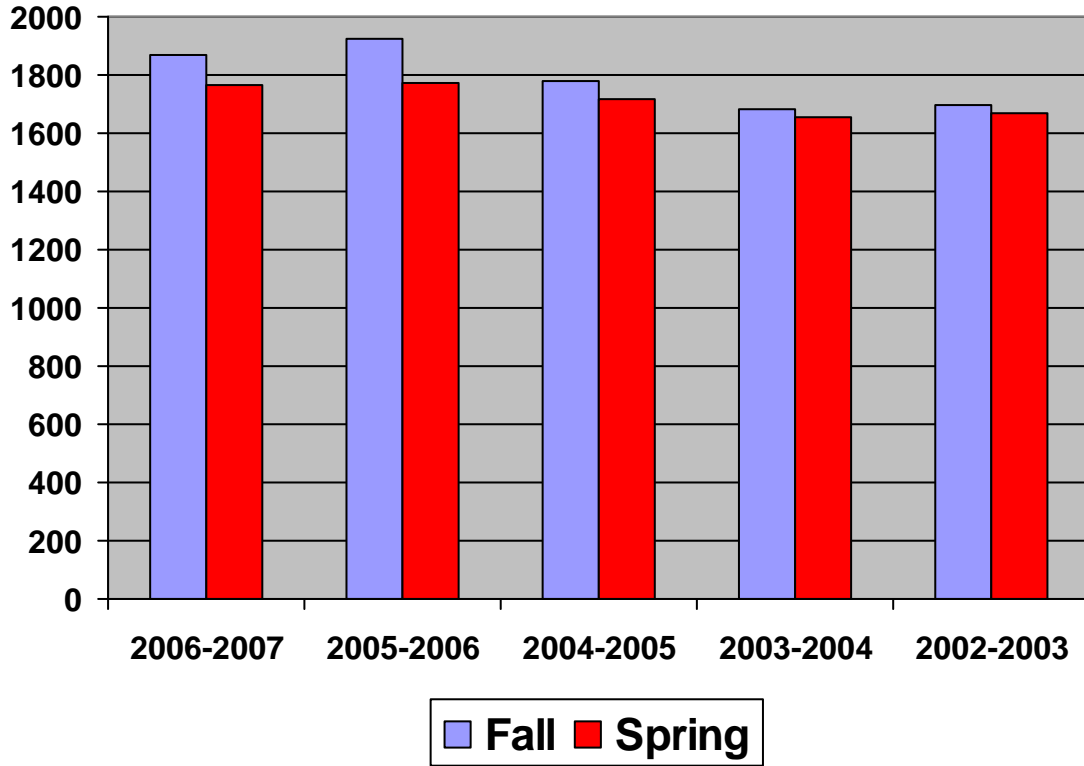
³⁴ Texas Education Agency Secondary School Completion and Dropouts in Texas Public Schools, Supplemental District Data, 2004-2005

³⁵ Texas Higher Education Coordinating Board and Texas Education Agency publication. Note this is not the percentage of the entire graduating class, but only those who were known to enroll in a Texas public college in fall 2005



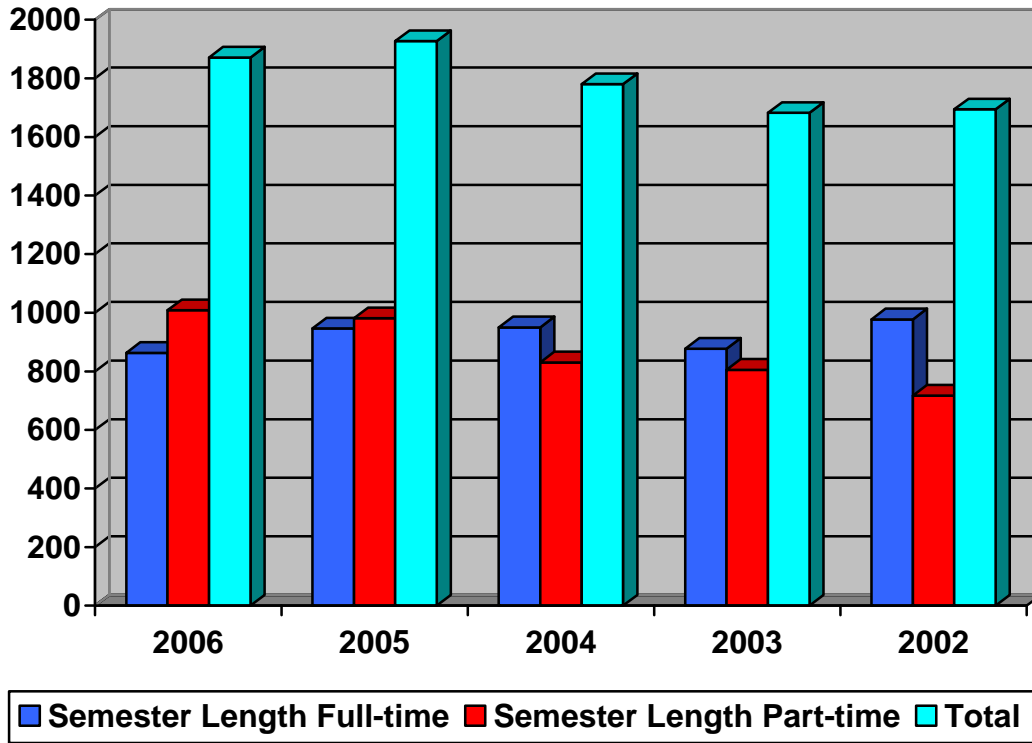
Institutional Data

Five Year Fall / Spring Enrollment Report



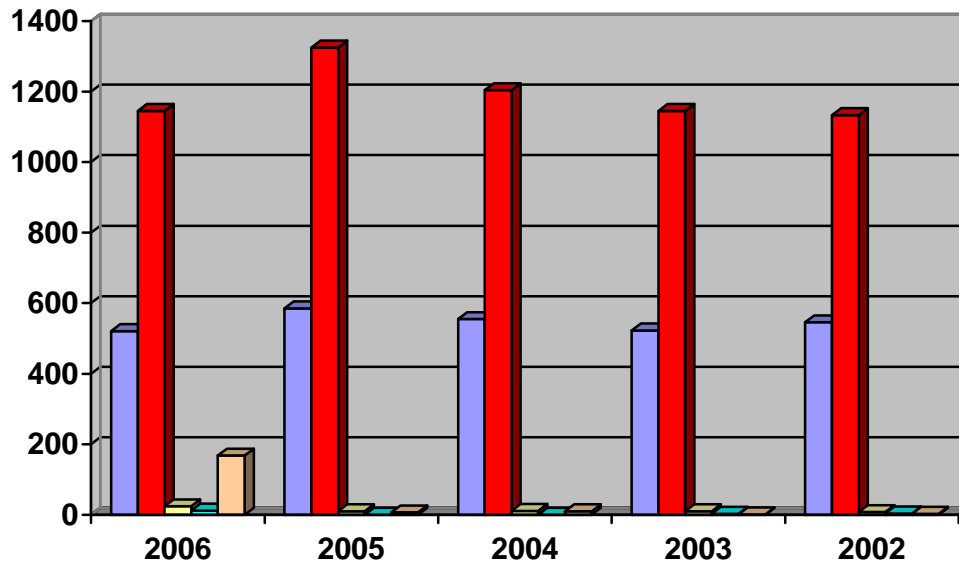
<i>Year</i>		<i>2006-2007</i>	<i>2005-2006</i>	<i>2004-2005</i>	<i>2003-2004</i>	<i>2002-2003</i>
<i>Number of Students</i>	<i>Fall</i>	1871	1927	1780	1682	1694
	<i>Spring</i>	1766	1769	1720	1654	1671

**Five Year Credit Enrollment By Full-time/Part-time Status
Fall Semesters**



Status	2006	2005	2004	2003	2002
Semester Length Full-time	863	946	950	877	977
Semester Length Part-time	1008	981	830	805	717
Total	1871	1927	1780	1682	1694

Five Year Fall Credit Enrollment By Tuition Status and Geographical Distribution



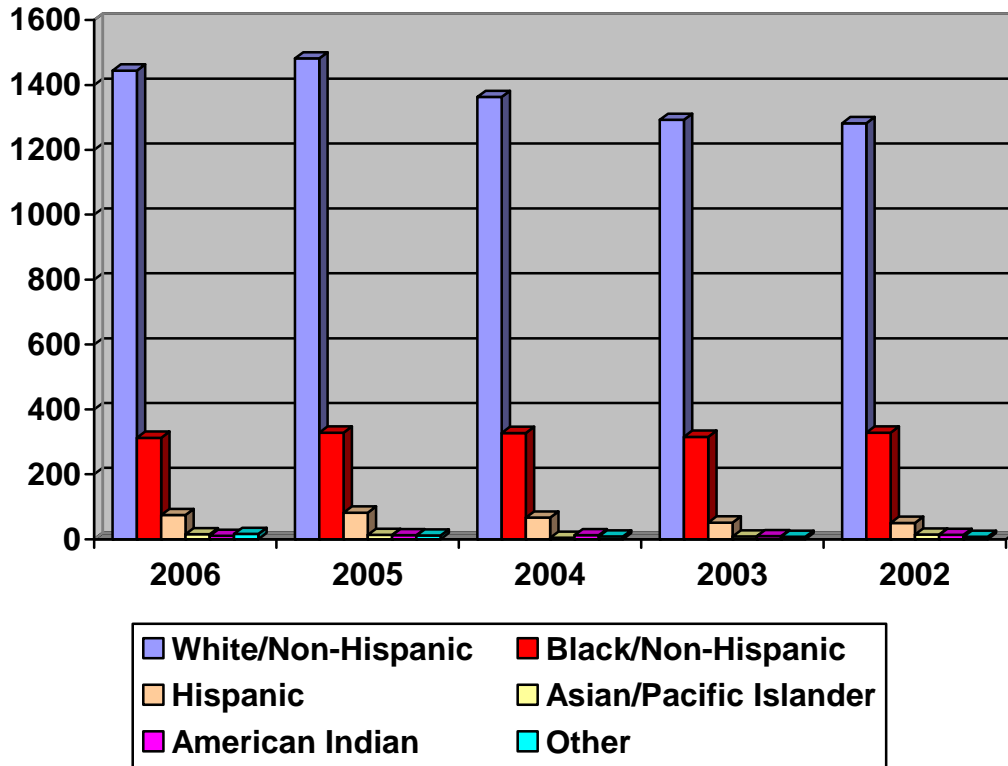
■ In-County	■ Out-of-County (includes LA)
■ Out-of-State (excludes LA)	■ Foreign
■ Exemption waivers (includes LA)	

Tuition Status	2006	2005	2004	2003	2002
In-County	522	585	555	523	546
Out-of-County	1154	1325	1204	1145	1133
Out-of-State (excludes LA)	27	10	11	13	7
Exemption waivers (includes LA)	168 *	7	10	1	3
Total	1871	1927	1780	1682	1694

*Prior to Fall 2006, LA residents were counted as out of county tuition status. As of Fall 2006, LA residents are reported in the exemptions/waivers category.

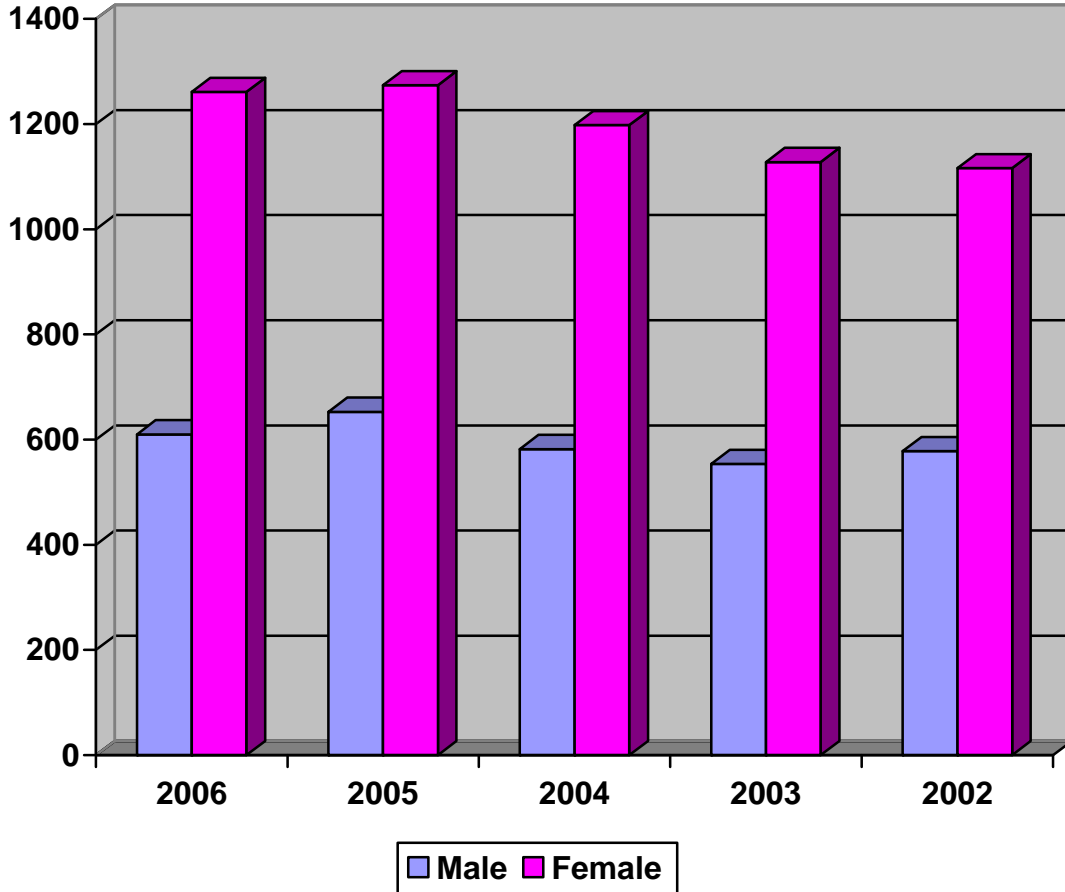
Geographic Distribution	2006	2005	2004	2003	2002
In-State	1675	1758	1610	1553	1580
Out-of-State	184	158	161	125	110
Foreign	12	11	9	4	4
Total	1871	1927	1780	1682	1694

**Five Year Trend of Credit Students By Ethnicity
Fall Semesters**



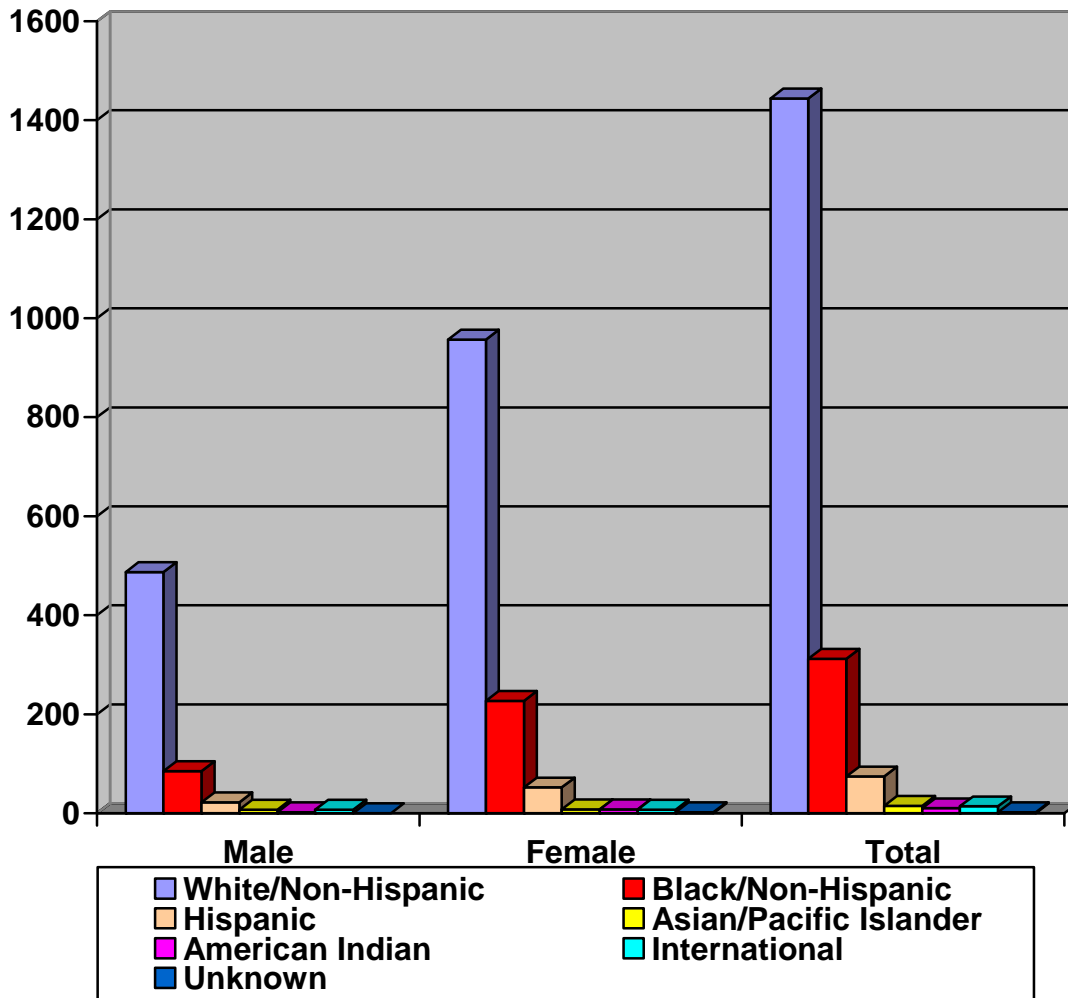
Ethnic Group	2006	2005	2004	2003	2002
White/Non-Hispanic	1444	1482	1363	1292	1282
Black/Non-Hispanic	312	328	327	315	328
Hispanic	74	81	66	51	50
Asian/Pacific Islander	15	13	4	8	14
American Indian	10	12	12	9	13
Other	16	11	8	7	7
Total	1871	1927	1780	1682	1694

**Five Year Trend of Credit Students by Gender
Fall Semesters**



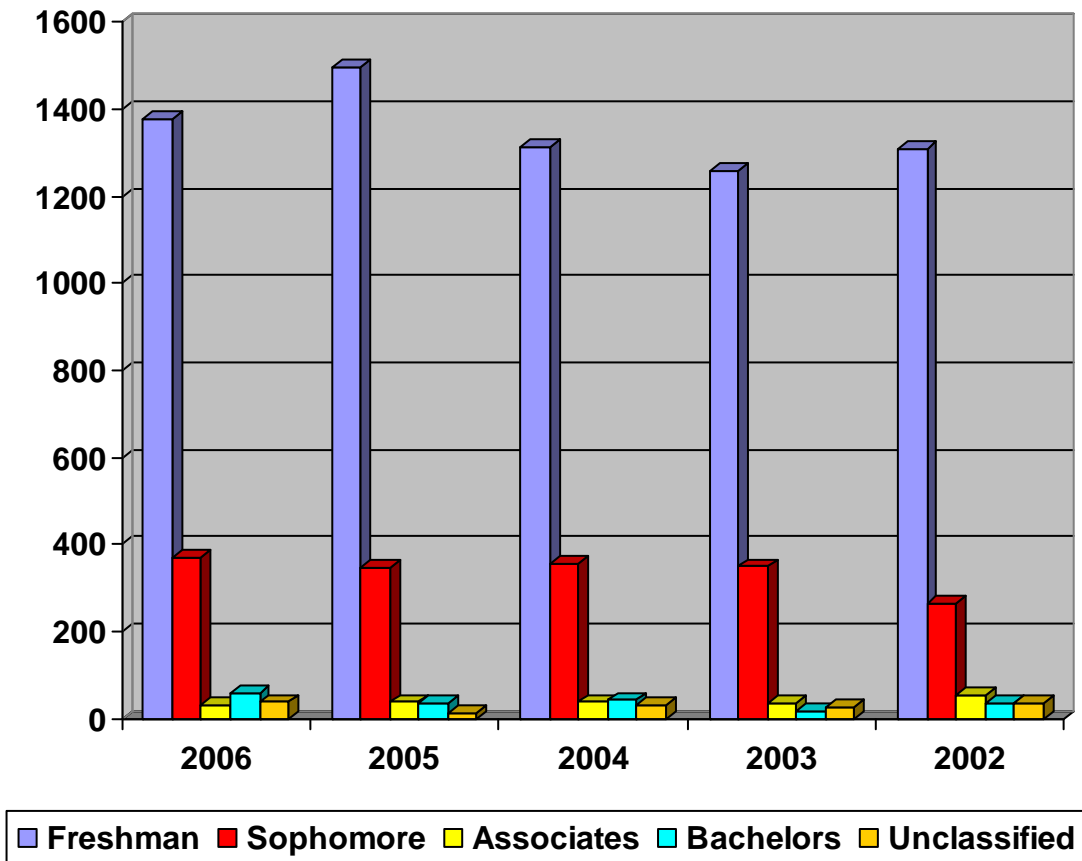
Classification	2006	2005	2004	2003	2002
Male	610	653	582	554	578
Female	1261	1274	1198	1128	1116
Total	1871	1927	1780	1682	1694

Fall 2006 Credit Students Ethnic/Gender Breakdown



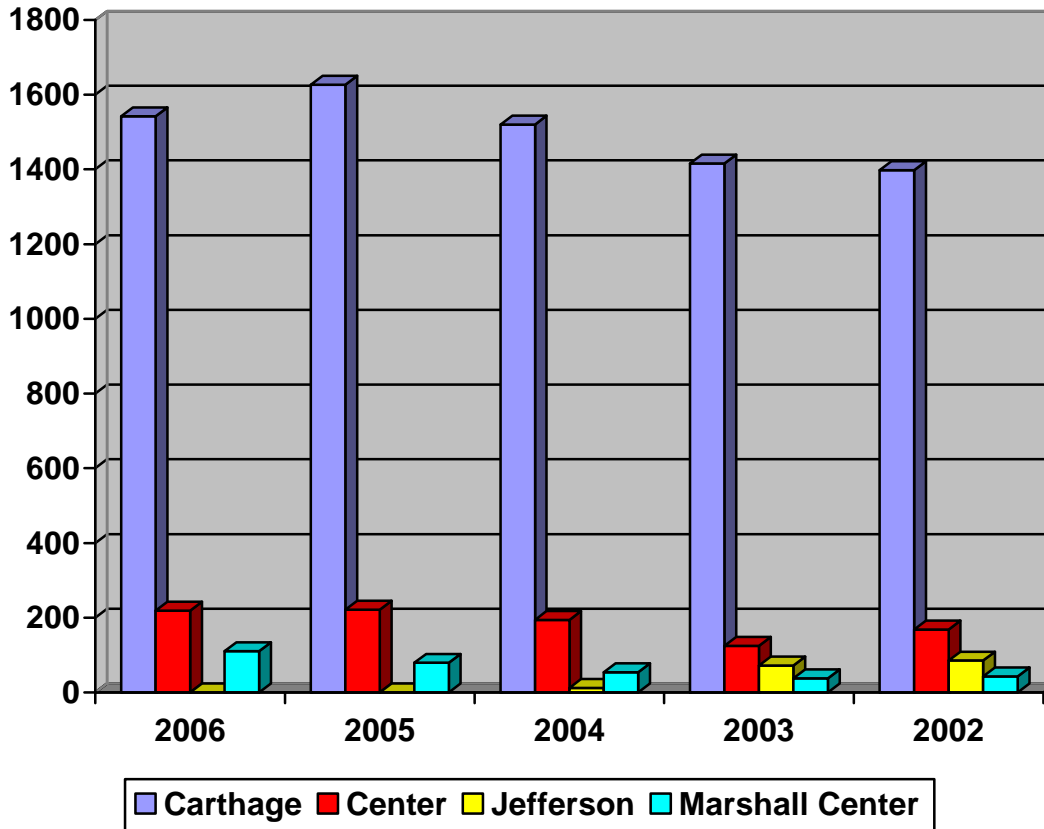
Ethnic Group	Male	Female	Total
White/Non-Hispanic	487	957	1444
Black/Non-Hispanic	85	227	312
Hispanic	22	52	74
Asian/Pacific Islander	7	8	15
American Indian	2	8	10
International	7	7	14
Unknown	0	2	2
Total	610	1261	1871

Five Year Fall Enrollment By Level



Level	2006	2005	2004	2003	2002
Freshman	1379	1496	1313	1258	1308
Sophomore	368	347	356	349	264
Associates	29	37	37	35	54
Bachelors	58	36	42	15	34
Unclassified	37	11	32	25	34
Total	1871	1927	1780	1682	1694

**Five Year Trend of Fall Student Headcount
Breakdown By Campus**

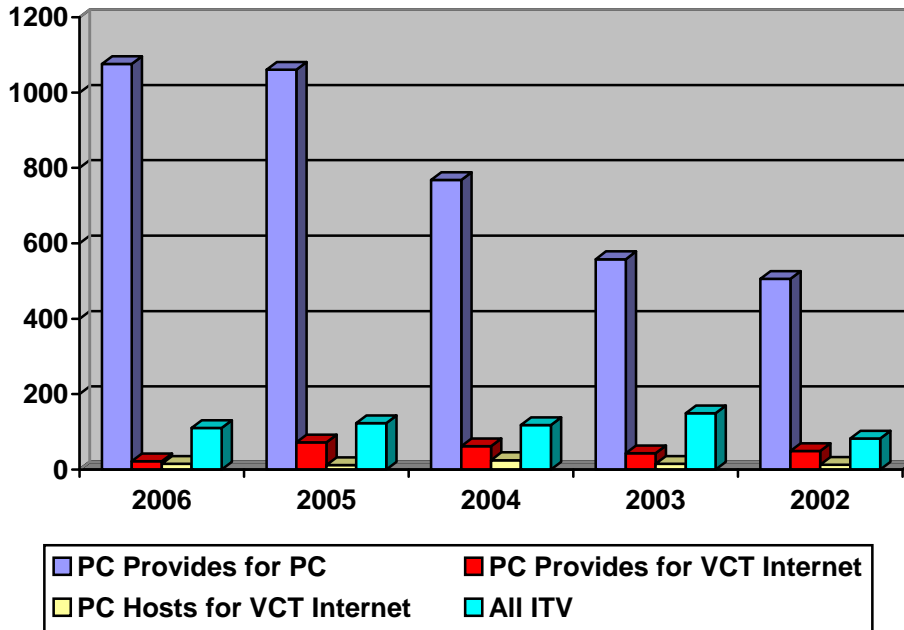


Campus	2006	2005	2004	2003	2002
Carthage	1542*	1627*	1520*	1416*	1398*
Center	219	221	194	156	168
Jefferson	0	0	12	72	85
Marshall Center	110	79	54	38	43
Total	1871	1927	1780	1682	1694

* Includes ITV classes broadcast from the Carthage campus to dual credit area high school students from Shelbyville High School, PC classes taught on Garrison High School, Jefferson High School, Joaquin High School, Timpson High School, and Waskom High School campuses, and PC classes taught at Barksdale AFB.

**Fall Distance Learning Duplicated Headcount
Breakdown By Mode of Delivery**

Duplicated Head Count



Mode of Delivery *	2006	2005	2004	2003	2002
Internet					
PC Provides for PC	1076	1061	768	558	506
PC Provides for VCT	22	72	62	43	49
PC Hosts for VCT	15	12	25	15	13
PC students receiving courses from other colleges per agreement	9		1		
Kilgore and Paris students receiving PC courses per agreement	37				
<i>Internet Total</i>	<i>1159</i>	<i>1145</i>	<i>856</i>	<i>616</i>	<i>568</i>
Interactive Television					
PC Provides PC at Remote Sites	57	80	90	118	70
PC Provides for VCT	28	4	6	3	6
Angelina/Kilgore students receiving PC courses per agreement	0	3	6	5	
PC students receiving Angelina/Kilgore/Paris/TJC courses per agreement	25	12	12	13	
Community Service for University courses	0	24	4	10	6
<i>ITV Total</i>	<i>110</i>	<i>123</i>	<i>118</i>	<i>149</i>	<i>82</i>
Total	1269	1268	974	765	650

* An explanation of modes of delivery is on the following page.

Definition of Distance Learning Modes of Delivery

Internet Courses

PC Provides for PC – Panola College students are enrolled in Internet courses offered by Panola College.

PC Provides for VCT – Students enrolled in other community colleges take Panola College Internet courses through the Virtual College of Texas (VCT). These students are not counted toward state funding, but Panola College receives a lease fee of \$195 for each student.

PC Hosts for VCT – Panola College students are enrolled in other community colleges' courses through the Virtual College of Texas. Panola College receives state funding for these students and pays lease fees to the providing colleges.

PC students receiving courses from other colleges – Panola College students are taking an Internet course from other colleges per agreement with no exchange of funds. These students are not being processed through the VCT.

Kilgore and Paris students receiving PC courses per agreement – Kilgore and Paris College students are taking an Internet course from Panola College per agreement with no exchange of funds. These students are not being processed through the VCT

Interactive Television (ITV) Courses

PC Provides for PC Students at Remote Sites – Panola College students are enrolled in ITV courses offered by Panola College. Only the students at remote sites are counted in this category. The students seated in the originating classroom with the instructor are not included in this count. Remote sites include Shelby College Center, Marshall Mall, and area high schools.

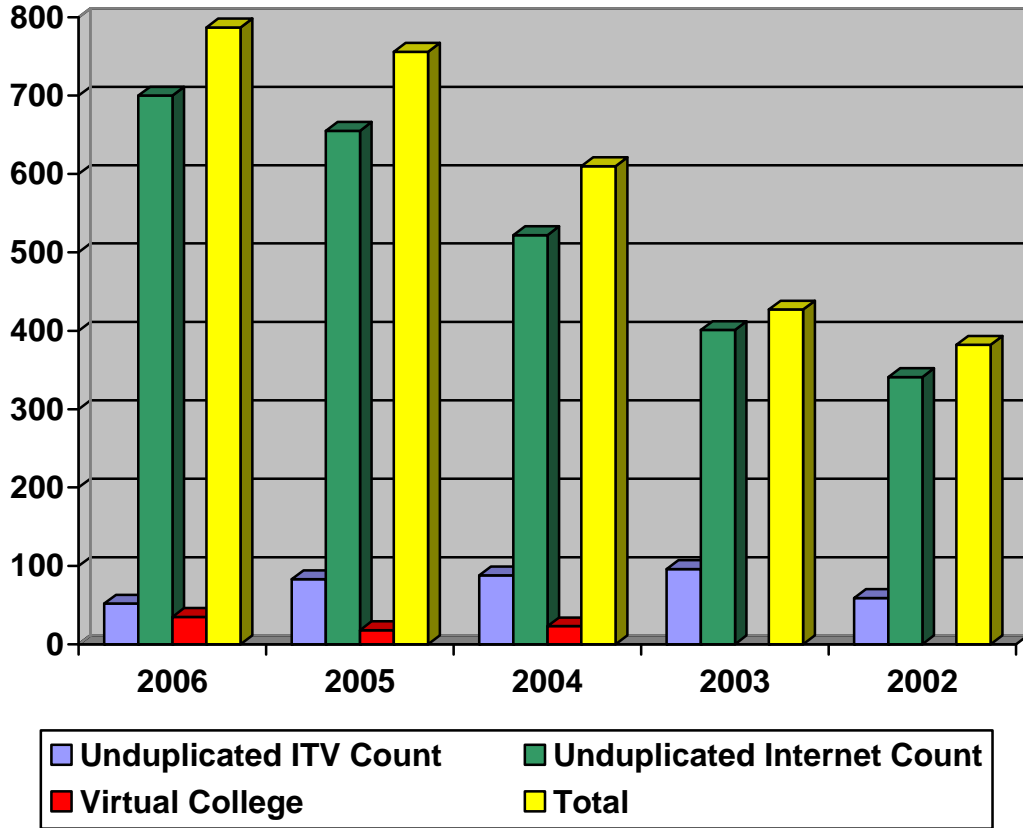
PC Provides for VCT – Students are enrolled in Panola College ITV courses through VCT. These students are not counted toward state funding, but Panola College receives a course lease fee of \$195 for each of these students.

Angelina/Kilgore Students Receiving PC Courses – A Panola-Angelina-Kilgore-Paris agreement allows these three institutions to mutually share courses via ITV using the NorthEast Texas Network (NETnet) system with no exchange of funds. These students are not processed through the VCT. These are Kilgore and/or Angelina students taught by Panola College instructors.

PC Students Receiving Angelina/Kilgore/Paris Courses – A Panola-Angelina-Kilgore/Paris agreement allow mutually shared courses via ITV using the NorthEast Texas Network (NETnet) system with no exchange of funds. These students are not processed through the VCT. These are Panola College students taught by Kilgore and/or Angelina and/or Paris College instructors.

Community Service for University Courses – Panola College receives upper level university courses via the NETnet system. There is no fee charged these students.

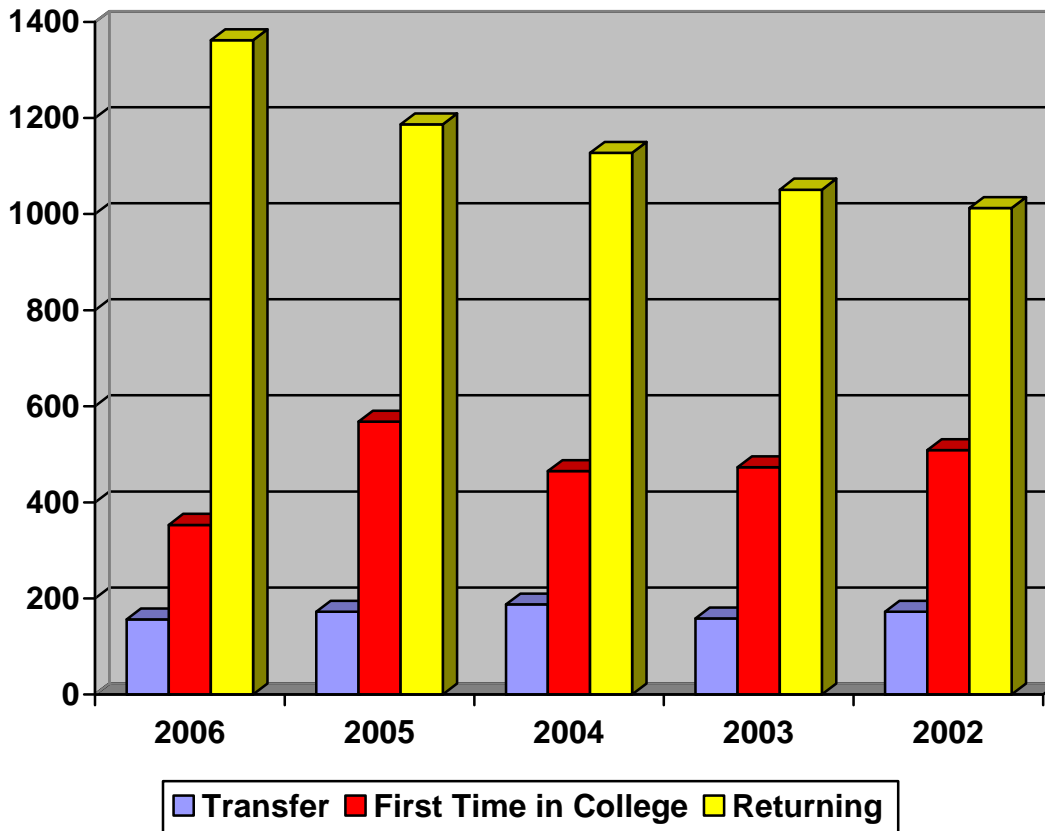
**Five Year Trend for Fall Distance Learning Enrollment
Unduplicated Head Count**



Headcount	2006	2005	2004	2003	2002
Unduplicated ITV Count	52	83	88	96	59
Unduplicated Internet Count	700	655	522	401	341
Virtual College (Internet-based)	35	18	23	<i>No data available</i>	
Unduplicated Total **	787	756	610	427	382

** Some students may be enrolled in both Internet and ITV classes and counted once for each of the individual categories. Therefore, a student who is counted in the unduplicated headcount for the Internet and for the ITV categories will only be counted once in the Total category, so the columns will not necessarily sum to the total.

**Five Year Trend
Fall Student Distribution**



Distribution	2006	2005	2004	2003	2002
Transfer	156	172	187	158	172
First Time in College**	353	568	465	473	509
Returning	1362	1187	1128	1051	1013
Total	1871	1927	1780	1682	1694

** First Time in College Fall 2006	Number
May 2006 Graduates	220
Previous High School Graduates	50
Individual Applications	2
GED Entrants	17
Early Admission & HS Articulation	235
Total	524

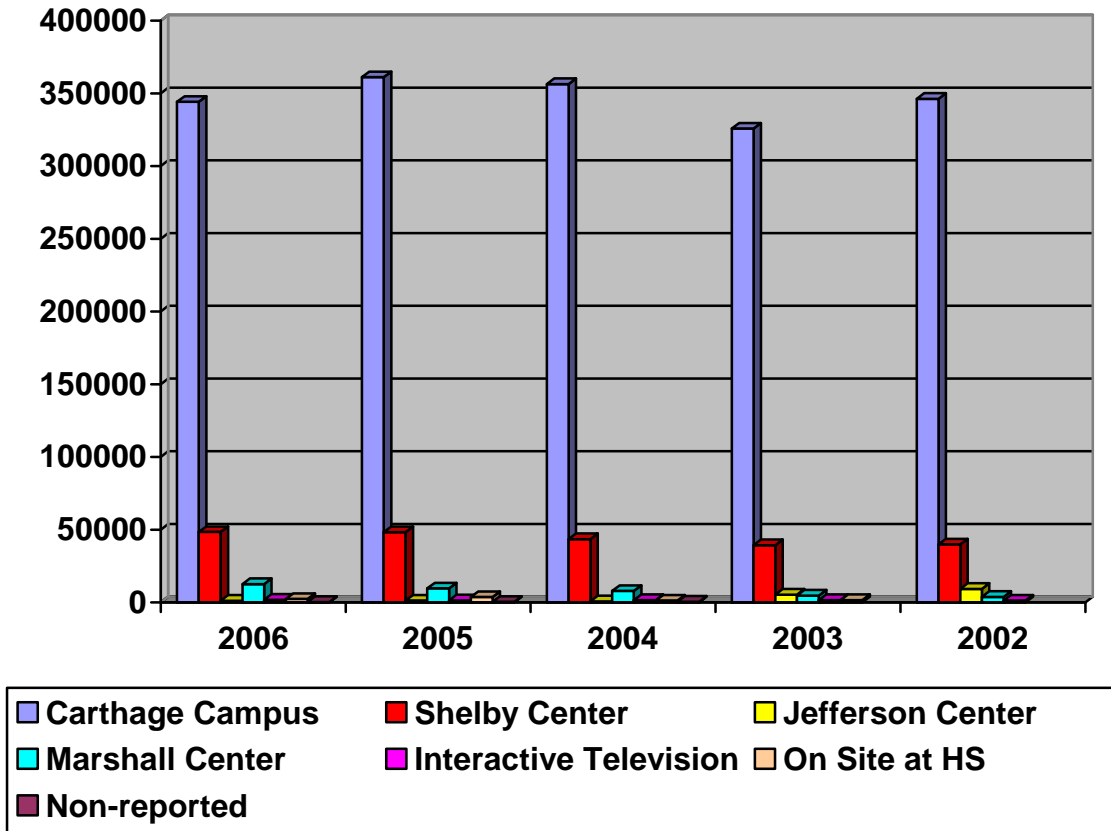
**Fall Contact Hours By Program Area:
Academic and Career / Technical**

Academic (Funded*)	2006	2005	2004	2003	2002
Agriculture	2,832	4,000	2,400		
Biology	38,880	39,840	43,584	39,744	37,056
Business Mgmt., Mrkting	3,120	4,368	4,848	5,328	3,744
Communications	1,248	2,304	1,824	0	2,544
Computer Science	14,256	16,272	13,488	13,872	15,072
Consumer Home EC (Nutrition)	8,128	5,520	4,032	2,736	3,120
Criminal Justice, Public Admin.	672	768	1,392		
Fine and Applied Arts	31,968	29,872	30,416	26,960	29,168
Foreign Language	2,112	2,640	2,016	2,944	3,936
Health	2,016	2,592	2,928	1,152	1,632
Letters	46,416	52,544	49,120	47,856	52,112
Mathematics	30,560	31,328	30,432	31,312	37,440
Physical Education and Fitness	20,256	25,632	23,760	19,200	18,960
Physical Science	11,200	13,184	11,456	11,536	11,312
Psychology	13,216	10,608	11,328	14,592	10,944
Social Science	32,736	35,040	39,168	36,768	42,528
Total Funded Academic CH	259,616	276,512	272,192	254,000	269,568

Career / Technical (Funded*)	2006	2005	2004	2003	2002
Agriculture (FTN)	48				
Business Mgmt, Admin (OST)	11,520	9,312	10,224	9,024	12,608
Computer Info Systems related	3,936	3,312	5,536	3,344	4,528
Cosmetology (Cons & HEC)	20,192	23,360	28,256	24,448	17,952
Education Technology	0	704			
Environmental Technology	0	864	432		
Foreign Language (ADN, OTA)	1,968	1,712	1,568	832	
Forest Technology	0	0	0	3,168	9,920
Graphics Arts	480				
Health Information Technology	6,928	9,136	10,496	8,400	7,280
Hospitality	0	0	0	0	2,192
Industrial Technology	3,552	5,568	1,664	2,320	3,648
Welding	8,720	10,944	5,408	4,288	8,416
Associate Degree Nursing	35,152	30,832	30,736	25,760	24,704
Vocational Nursing	39,040	35,952	33,104	32,496	31,968
Occupational Therapy	16,048	13,712	10,064	9,696	7,376
Total Funded Career / Technical CH	147,584	145,408	137,488	123,776	130,592
Total Funded Academic And Career/Technical CH	407,200	421,920	409,680	377,776	400,160

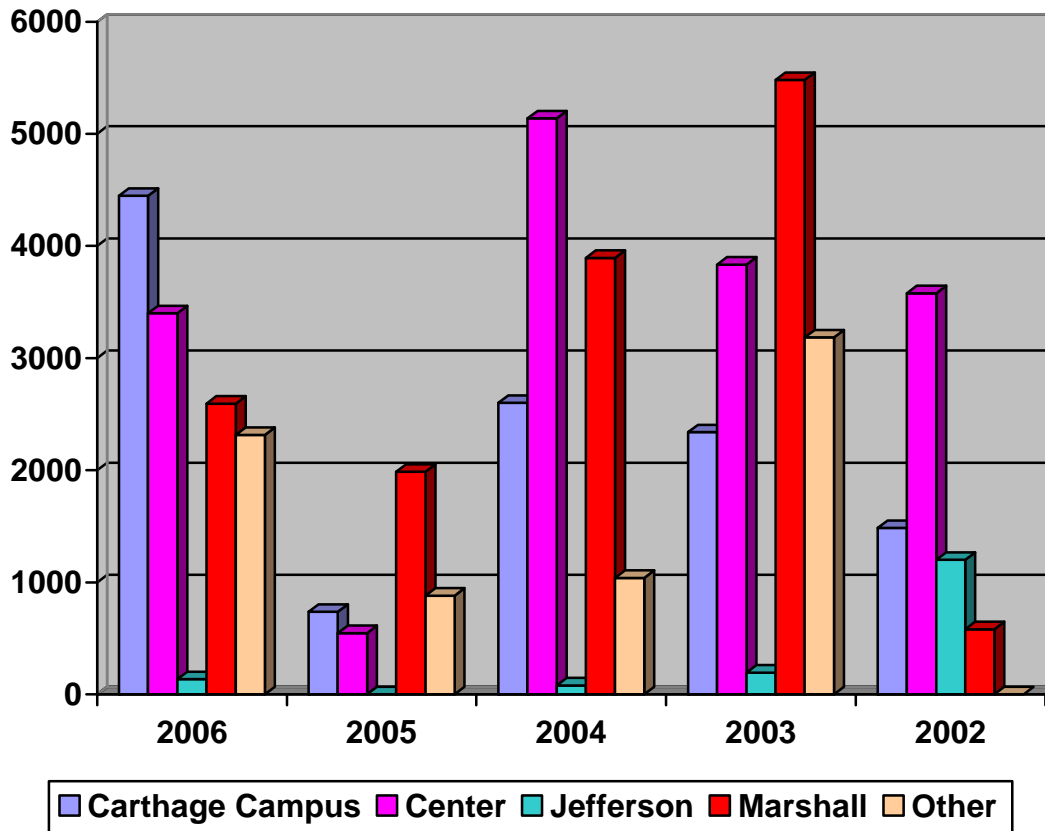
* Some contact hours are not funded by the state due to repeated courses.

**Fall Contact Hours By Campus:
Academic and Career / Technical**



Academic & Career / Technical	2006	2005	2004	2003	2002
Carthage Campus	344,240	361,104	356,480	325,824	346,368
SCC, SRTC, & Center HS	48,288	48,160	43,408	39,232	39,792
Jefferson Center & Jefferson HS	1,008	1,152	576	5,232	9,200
Marshall Center	12,480	9,456	7,728	4,512	3,648
Remote ITV to High Schools	1,632	1,248	1,488	1,536	1,152
On Site at High School (not ITV)	2,208	3,552	1,104	1,440	
Non-reported (Barksdale PE only)	192	240	336		
Total Off-Campus	65,808	63,808	54,640	51,952	53,792
Total Semester Length CH (Includes Non-funded)	410,048	424,912	411,120	377,776	400,160

**Fall Contact Hours By Campus:
Continuing Education**

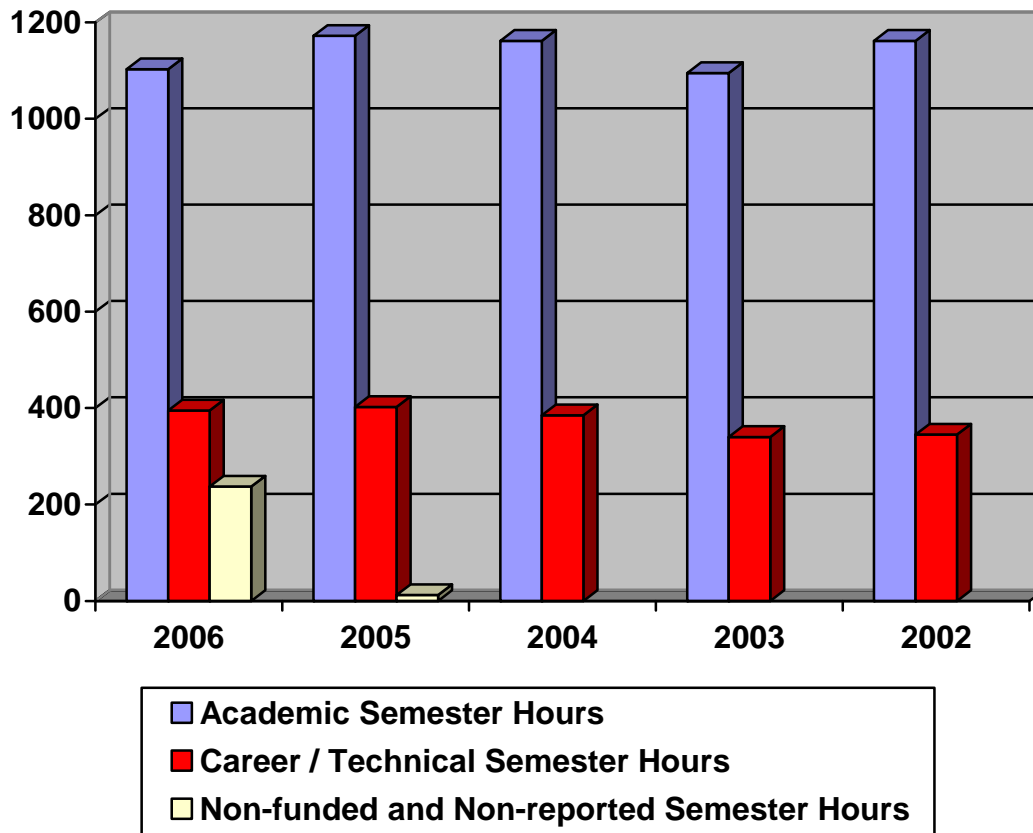


Continuing Education	2006	2005	2004	2003	2002
Carthage	4,447	736	2,600	2,338	1,485
Center	3,400	547	5,139	3,834	3,577
Jefferson	136	0	80	195	1,200
Marshall	2,593	1,986	3,894	5,480	582
Other	2,314	880	1,040	3,184	0
Total Continuing Education	12,890	4,149	12,753	15,031	6,844

Fall Contact Hour Summary	2006	2005	2004	2003	2002
Total Semester Length	410,048	424,912	411,120	377,776	400,160
Total Continuing Education	12,890	4,149	12,573	15,031	6,844
Total Funded *	420,090	426,069	422,433	392,807	407,004

* Some contact hours are not funded by the state due to repeated courses.

**Five Year Trend Fall Credit
Academic / Career and Technical Full-Time Equivalent (FTE*)**



Full Time Equivalent	2006	2005	2004	2003	2002
Academic Semester Hours	1103	1173	1162	1095	1162
Career / Technical Semester Hours	395	402	385	340	345
Non-funded and Non-reported Semester Hours	12	12			
Total FTE	1510	1587	1547	1435	1507

* Some contact hours are not funded by the state due to repeated courses.

Panola College: Programs Offered

Academic Degree Programs

Associate of Arts
Associate of Arts - Teaching
Associate of Science

Technical Degree Programs

Associate of Applied Science – Computer Information Systems
Associate of Applied Science – General Business
Associate of Applied Science – Health Information Technology
Associate of Applied Science – Industrial Technology
Associate of Applied Science – Associate Degree Nursing (Leading to RN)
Associate of Applied Science – Occupational Therapy Assistant
Associate of Applied Science – Office Technology

Technical Certificate Programs

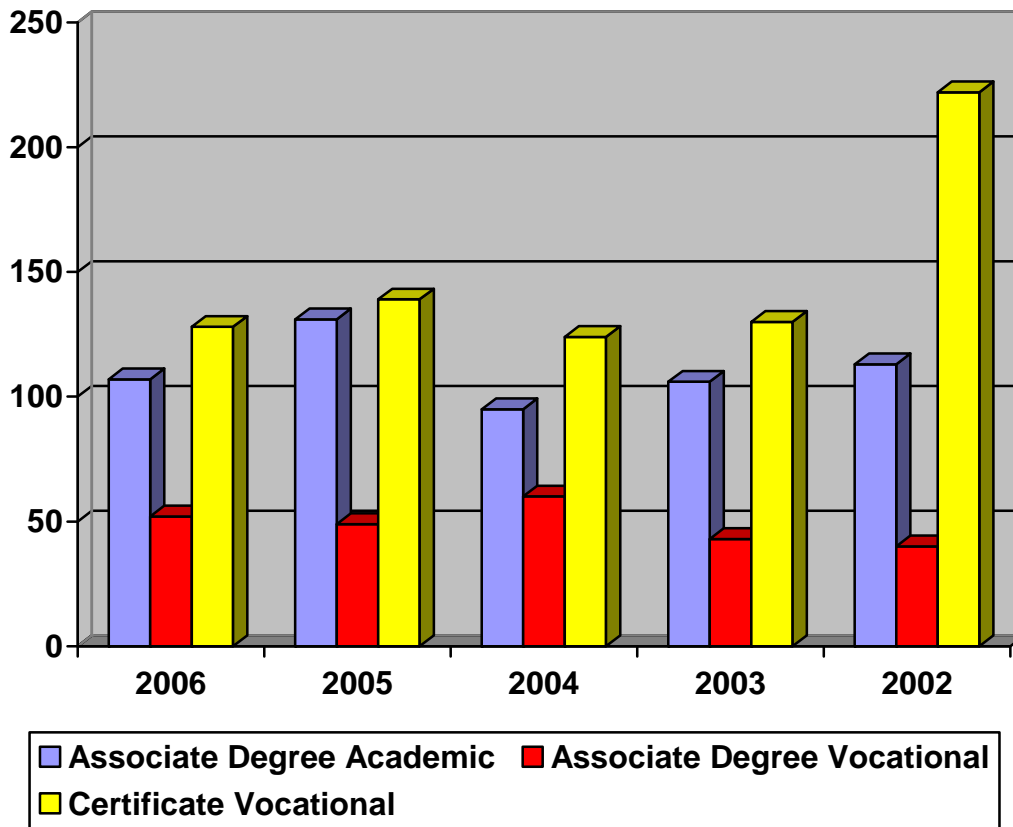
Cosmetology Facial/Esthetic Technology
Cosmetology Instructor Training
Cosmetology Nail Technology
Cosmetology Operator
Electrical Specialist
Environmental Technology
General Business
Industrial Technology Specialist
Industrial Technology Support
Mechanical Specialist
Medical Administrative Assistant/Secretary
Medical Coding Technician
Microcomputer Software Operator
Microcomputer Support Specialist
Nursing (Vocational Program Leading to LVN)
Office Technology – Office Specialist
Office Technology – Office Technician
Productivity Software Marketable Skills
Refrigeration Specialist
Welding
Welding Specialist

Fall 2006 Enrollment by Declared Major Field of Study

Curriculum	Total
A D Nursing	421
Agriculture, General	14
Architecture	7
Art, General	9
Biology, General	21
Business and Management	93
Chemistry, General	1
Computer Information Systems	20
Computer Science	16
Cosmetology	32
Criminology	14
Drama / Theater Arts	23
Education, General	105
Electrical Specialist	10
Engineering	13
English Language and Literature	8
Environmental Technology	6
Facial Specialist	4
Foreign Languages & Literatures	0
Forestry Science	8
General Business	10
General Business (1 year certificate)	3
General Studies	550
Geology	1
Health Information Technology	16
Health Professions / Related	29
Health / Medical Assistants	4
History, General	12
Home Economics, General	1
Industrial Technology	5
Industrial Technology Specialist	5
Industrial Technology Support	4
Journalism / Communications	18
Liberal Arts / Sciences	2

Curriculum	Total
Mathematics	6
Mechanical Specialist	0
Medical Administrative Assistant / Secretary	4
Medical Coding	16
Microcomputer Software	2
Microcomputer Support Specialist	0
Music, General	18
Nail Technician	1
Nursing (Transfer)	0
Occupational Therapy Assisting	106
Office Specialist	5
Office Systems Technology	13
Office Technician	4
Phys Ed - Teaching and Coach	17
Physics, General	0
Political Science and Govt., Gen.	3
Pre-Dentistry Studies	6
Pre-Law	8
Pre-Medicine Studies	14
Pre-Pharmacy Studies	7
Pre-Veterinary Studies	11
Psychology, General	20
Refrigeration Specialist	3
Social Work	4
Sociology	3
Speech and Rhetorical Studies	2
Vocational Nursing	80
Welding	33
Totals:	1871

Five Year Trend
Total Number of Degrees and Certificates Awarded

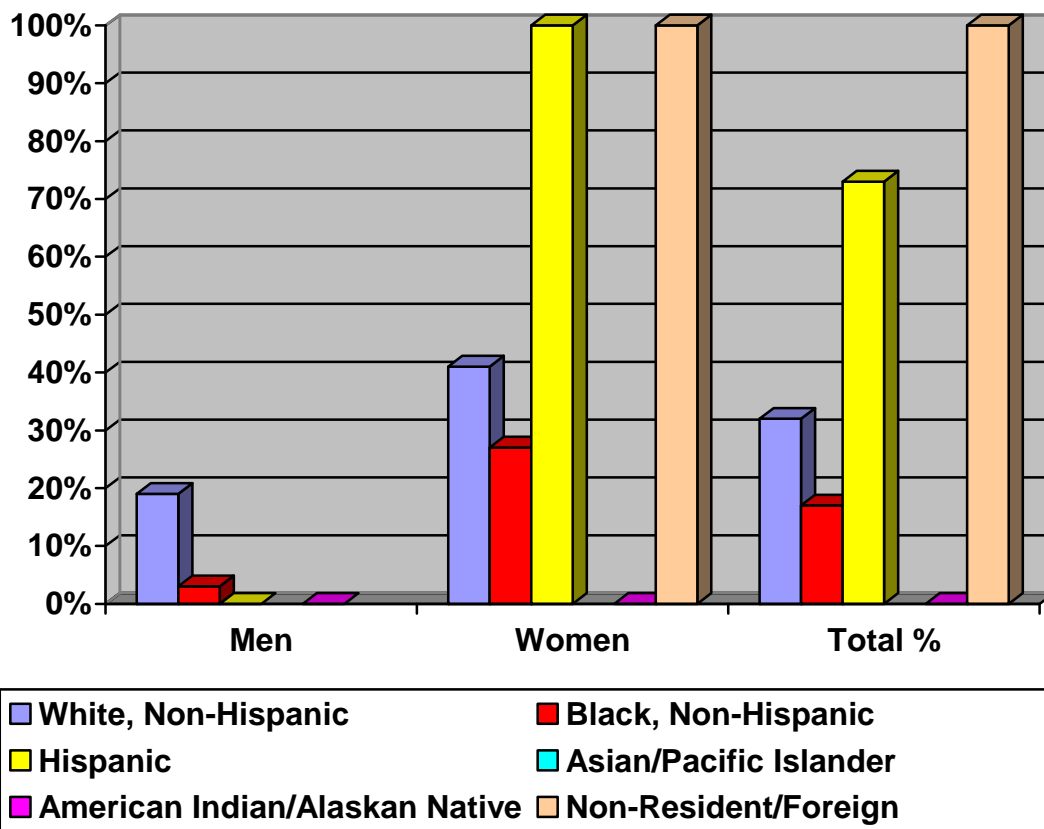


Degree/Certificate	2006	2005	2004	2003	2002
Associate Degree Academic	107	131	95	106	113
Associate Degree Vocational	52	49	60	43	40
Certificate Vocational	128	139	124	130	222
Total	287	319	279	279	375

Percent of First Time, Full-time College Students Who Entered Fall 2003 (Cohort Year 2003) and Completed* by Fall 2006

Ethnic Group	Men	Women	Total %
	% Completing by 2006	% Completing by 2006	% Completing by 2006
White, Non-Hispanic	19 %	41 %	32%
Black, Non-Hispanic	3 %	27 %	17%
Hispanic	< 0.5 % %	100 %	73%
Asian/Pacific Islander	NA	NA	NA
American Indian/Alaskan Native	< 0.5 %	< 0.5 %	< 0.5 %
Non-Resident/Foreign	NA	100 %	100 %
Total % Completing by 2006	14 %	41 %	30 %

Percentage of the Fall 2003 Cohort Who Completed* by Fall 2006

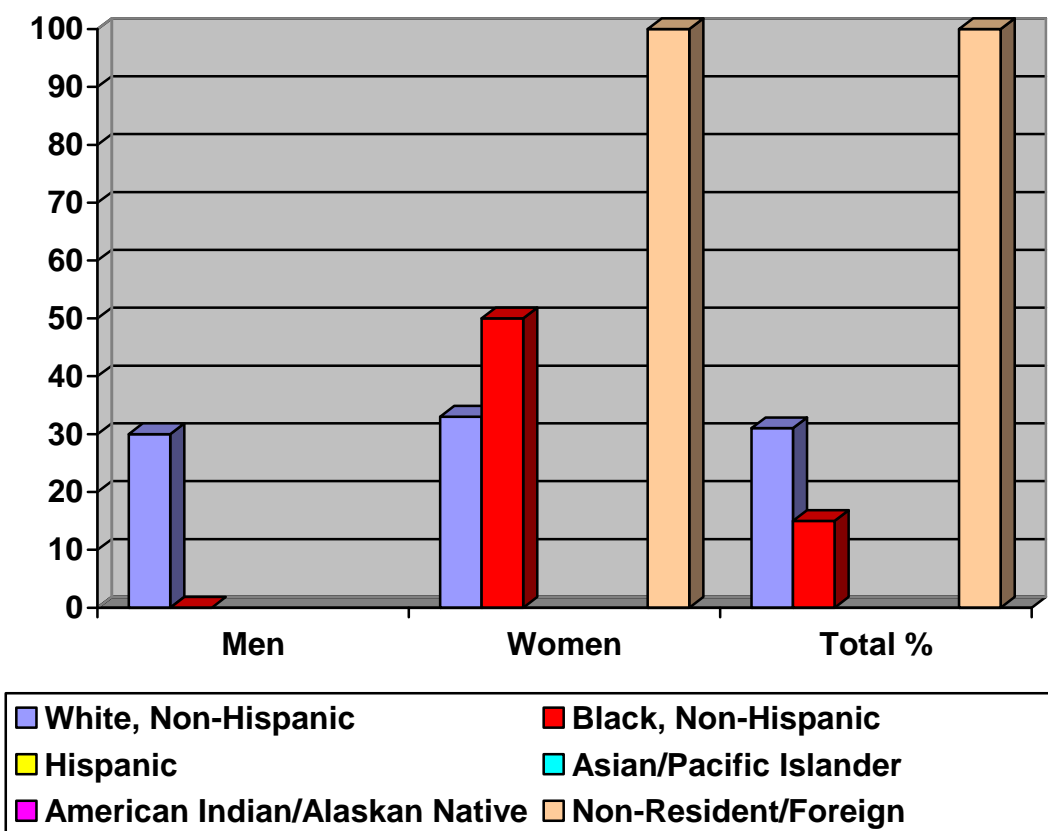


* Completers include students who earn a one or two year certificate, students who complete the core curriculum, and students earning an Associate's degree.

**Percent of First Time, Full-time Student Athletes Receiving
Athletically-related Student Aid (Athletic Sub-cohort 2003) who
Entered Fall of 2003 and Completed* by Fall 2006**

Ethnic Group	Men	Women	Total %
	% Completing by 2006	% Completing by 2006	% Completing by 2006
White, Non-Hispanic	30 %	33 %	31%
Black, Non-Hispanic	< 0.05 %	50 %	15%
Hispanic	NA	NA	NA
Asian/Pacific Islander	NA	NA	NA
American Indian/Alaskan Native	NA	NA	NA
Non-Resident/Foreign	NA	100 %	100 %
Total % Completing by 2006	13 %	50 %	26%

**Percentage of the Fall 2003 Athletic Sub-cohort
Who Completed* by Fall 2006**



* Completers include students who earn a one or two year certificate, students who complete the core curriculum, and students completing an Associate's degree.

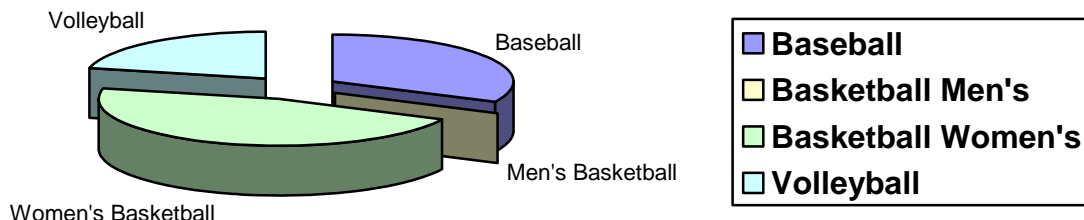
**Percent of First Time, Full-time Student Athletes Receiving
Athletically-related Student Aid (Athletic Sub-cohort 2003) By Sports
Category Who Completed By Fall 2006**

Ethnic Group	Baseball	Volleyball
	Men	Women
	% Completing by 2006	% Completing by 2006
White, Non-Hispanic	30 %	20 %
Black, Non-Hispanic	NA	NA
Hispanic	NA	NA
Asian/Pacific Islander	NA	NA
American Indian/Alaskan	NA	NA
Non-Resident/Foreign	NA	NA
Total % Completing by 2006	30 %	20 %

Ethnic Group	Basketball	
	Men	Women
	% Completing by 2006	% Completing by 2006
White, Non-Hispanic	NA	100 %
Black, Non-Hispanic	< 0.05 %	50 %
Hispanic	NA	NA
Asian/Pacific Islander	NA	NA
American Indian/Alaskan	NA	NA
Non-Resident/Foreign	NA	100 %
Total % Completing by 2006	< 0.05 %	43 %

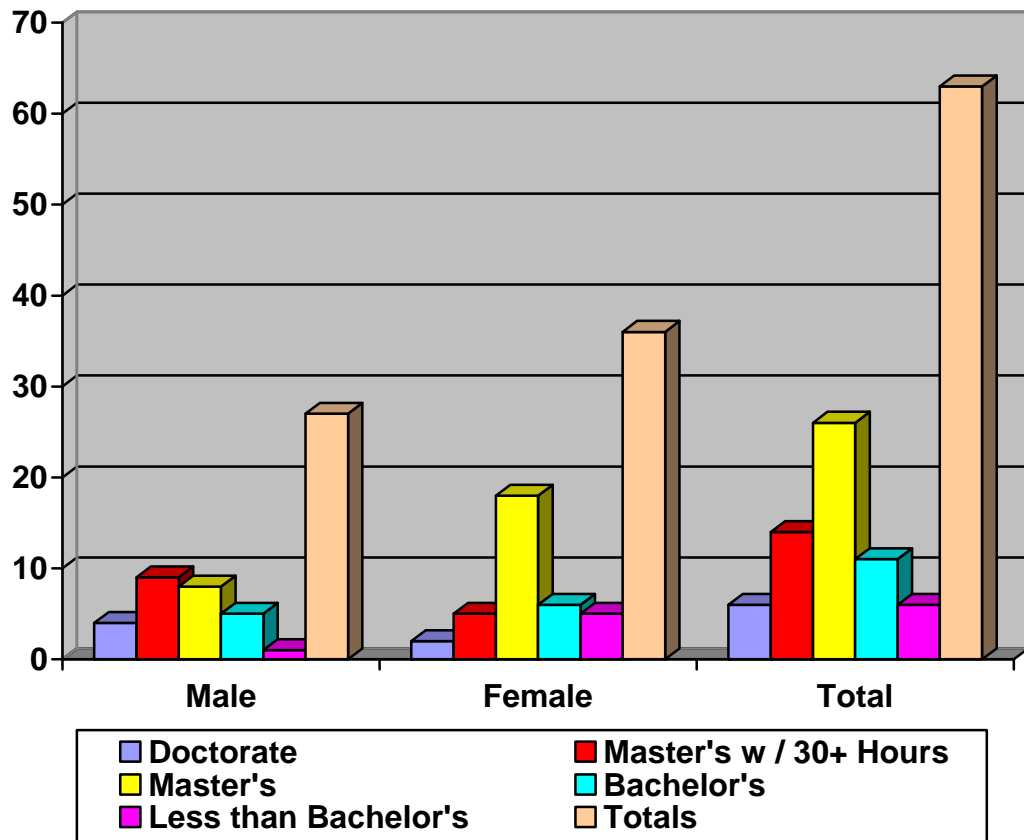
Total % of Athletic Sub-cohort Completing by 2006 **26 %**

**% From Each Sport Category of First Time Full-time Athletes Receiving
Athletically-related Student Aid in Fall 2003**



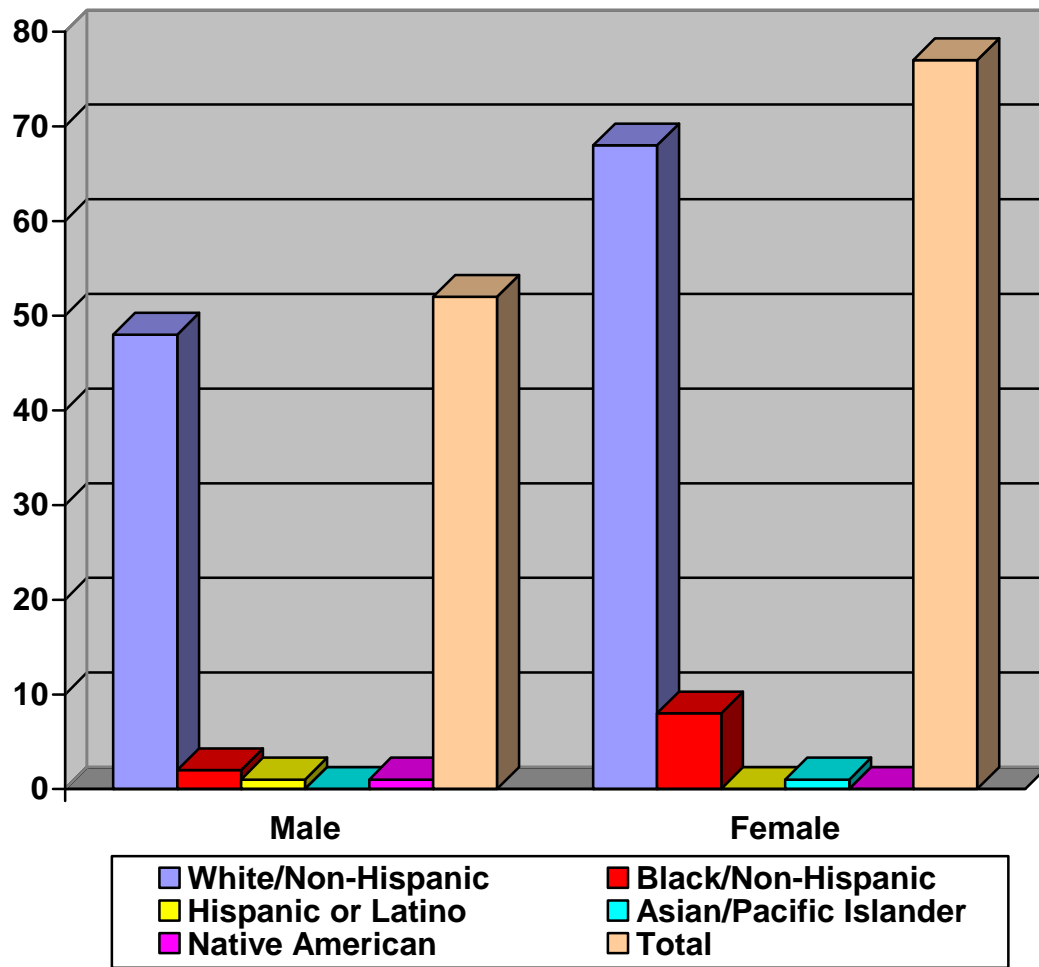
Sport	% From Each Sport Category of Athletes Receiving Athletically-related Student Aid who Completed the Core, a Degree, or Certificate by Fall 2006
Baseball	30 %
Men's Basketball	< 0.05 %
Women's Basketball	43 %
Volleyball	20 %

Number of Full-time Faculty By Degree and Gender (Fall 2006)



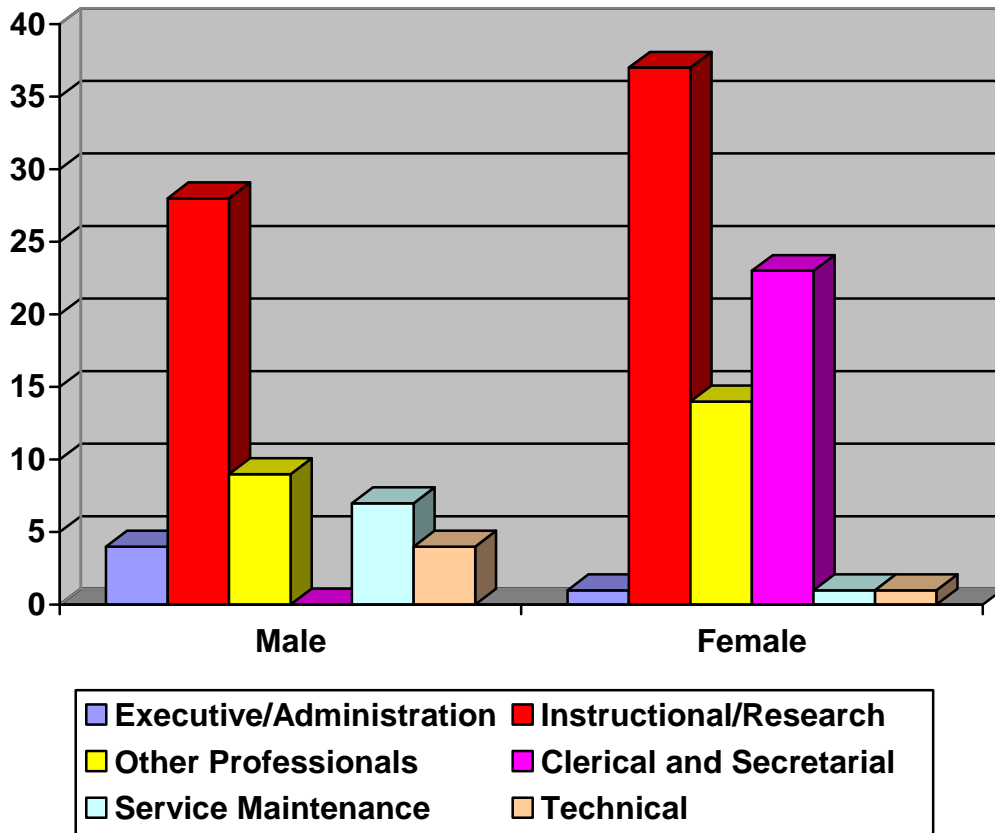
Degree	Male	Female	Total
Doctorate	4	2	6
Master's w / 30+ Hours	9	5	14
Master's	8	18	26
Bachelor's	5	6	11
Less than Bachelor's	1	5	6
Totals	27	36	63

Full-time Employees By Ethnicity and Gender (Fall 2006)



Ethnic Group	Male	Female	Total
White/Non-Hispanic	48	68	116
Black/Non-Hispanic	2	8	10
Hispanic or Latino	1	0	1
Asian	0	1	1
American Indian	1	0	1
Total	52	77	129

Full-time Employees By Activity and Gender (Fall 2006)



Activity	Male	Female	Total
Executive/Administration	4	1	5
Instructional/Research	28	37	65
Other Professionals	9	14	23
Clerical and Secretarial	0	23	23
Service Maintenance	7	1	8
Technical	4	1	5
Total	52	77	129

Revenues, Expenses, and Changes in Net Assets
September 1, 2005 – August 31, 2006

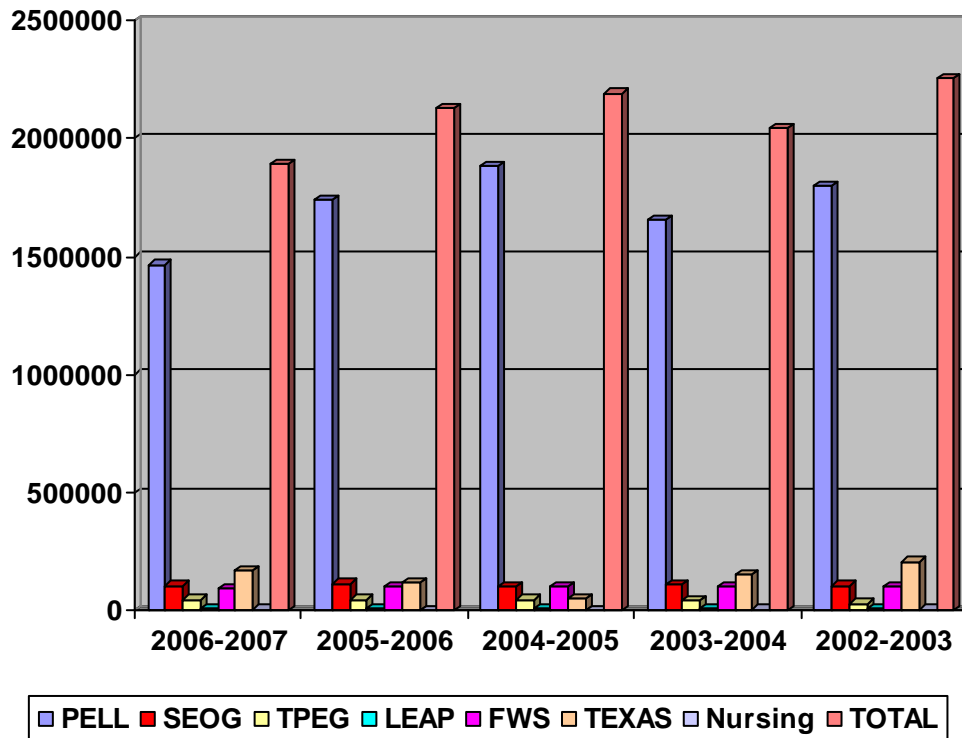
Operating Revenues	2005-2006	Prior Year
Tuition and Fees	1,913,953	1,634,788
Federal Grants and Contracts	2,528,736	2,973,806
State Grants and Contracts	231,552	535,939
Non-Government Grants and Contracts	20,346	28,142
Sales & Service of Educational Activities	181,842	207,039
Auxiliary Enterprises	1,088,135	917,107
Other Operating Revenues	310,744	268,563
Total Operating Revenues	6,275,308	6,565,384

Operating Expenses		
Instruction	5,402,336	5,302,643
Public Service	323,395	368,519
Academic Support	1,558,138	1,583,645
Student Services	1,028,438	940,144
Institutional Support	1,500,194	1,329,411
Operation and Maintenance of Plant	1,192,317	1,360,574
Scholarships and Fellowships	1,030,139	1,196,502
Auxiliary Enterprises	1,468,840	1,436,825
Depreciations	688,122	608,085
Total Operating Expenses	14,191,919	14,126,348
Operating Income Loss	-7,916,611	-7,560,964

Non-Operating Revenues:		
State Appropriations - General Revenue	4,526,107	4,265,653
Ad-valorem Taxes for Current Operation	3,638,548	3,240,504
Gifts	162,534	127,965
Investment Income	355,636	250,680
Royalty Income	70,657	65,440
Interest on Capital Related Debt	-168,675	-80,861
Loss of Disposition of Capital Assets	-14,439	
Net Non-Operating Revenues	8,570,368	7,869,381

Net Assets		
Net Assets – Beginning of Year	11,507,827	11,199,410
Net Assets – End of Year	12,161,584	11,507,827
Increase in Net Assets	653,757	308,417

**Five Year Trend
Need-Based Aid Received by Students**



Program	2006-2007	2005- 2006	2004- 2005	2003- 2004	2002- 2003
PELL	* 1,465,000	* 1,740,000	1,885,000	1,655,445	1,801,310
SEOG	105,518	114,537	100,000	112,146	105,756
TPEG	47,000	47,000	46,000	45,000	29,000
LEAP	7,234	7,552	6,711	6,234	7,388
FWS	95,940	100,000	100,000	100,000	100,000
TEXAS	165,580	115,570	51,130	151,397	207,360
Nursing	4,077	2,315	1,599	5,000	5,500
TOTAL	1,892,349	2,126,974	2,190,440	2,046,388	2,256,314

* estimated

Grants:

PELL

SEOG Supplemental Educational Opportunity Grant

LEAP Leveraging Educational Assistance Partnership (formerly SSIG)

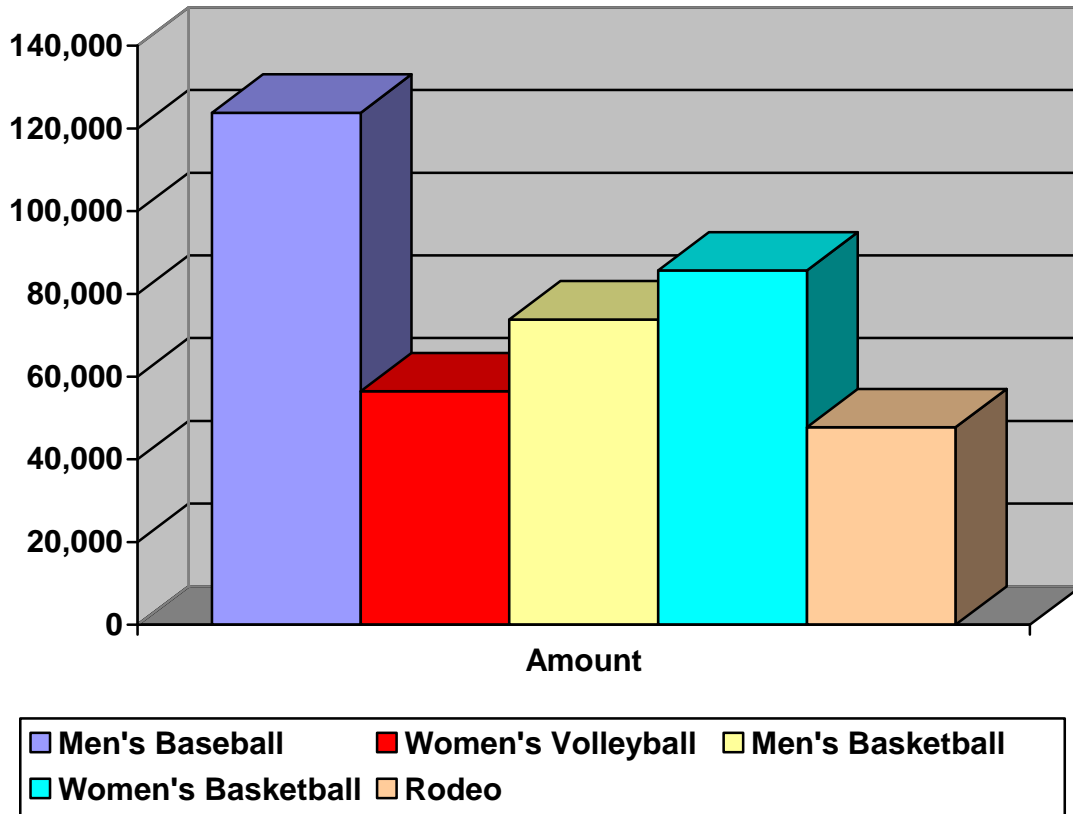
TEXAS Toward Excellence, Access, and Success Grant

TPEG Texas Public Educational Grant

Work Study:

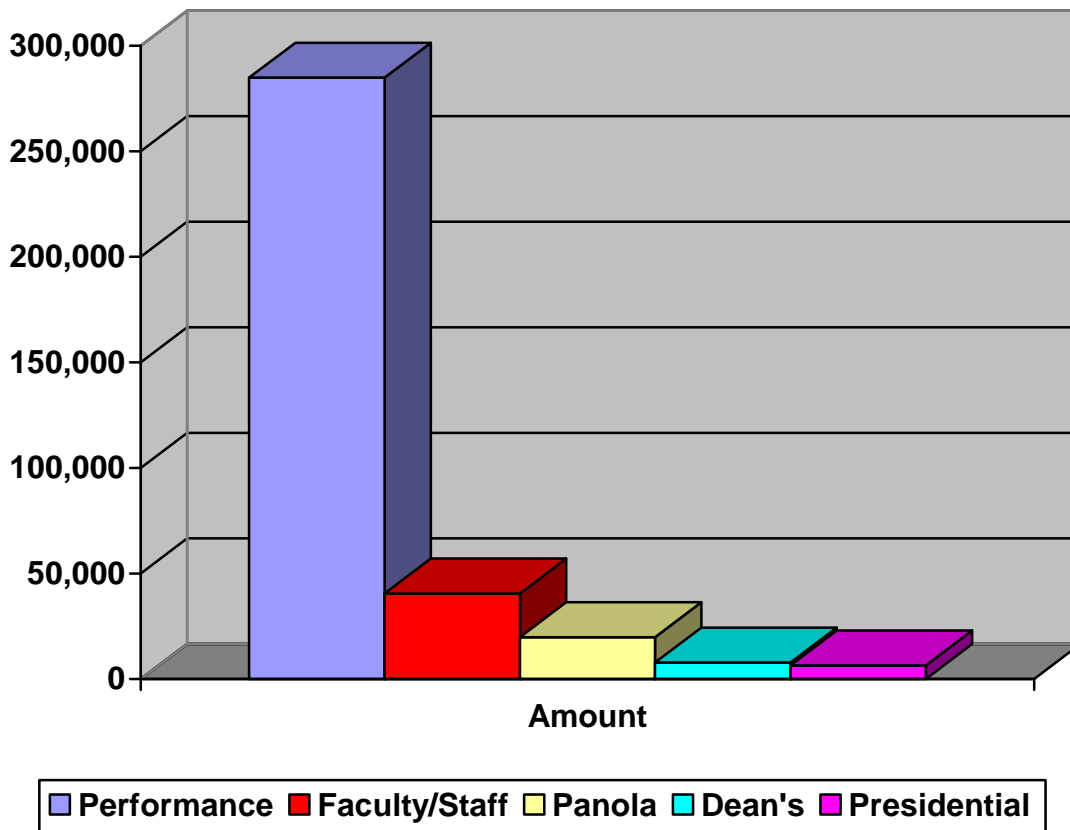
FWS Federal Work Study

Athletic Scholarships (2006 - 2007)



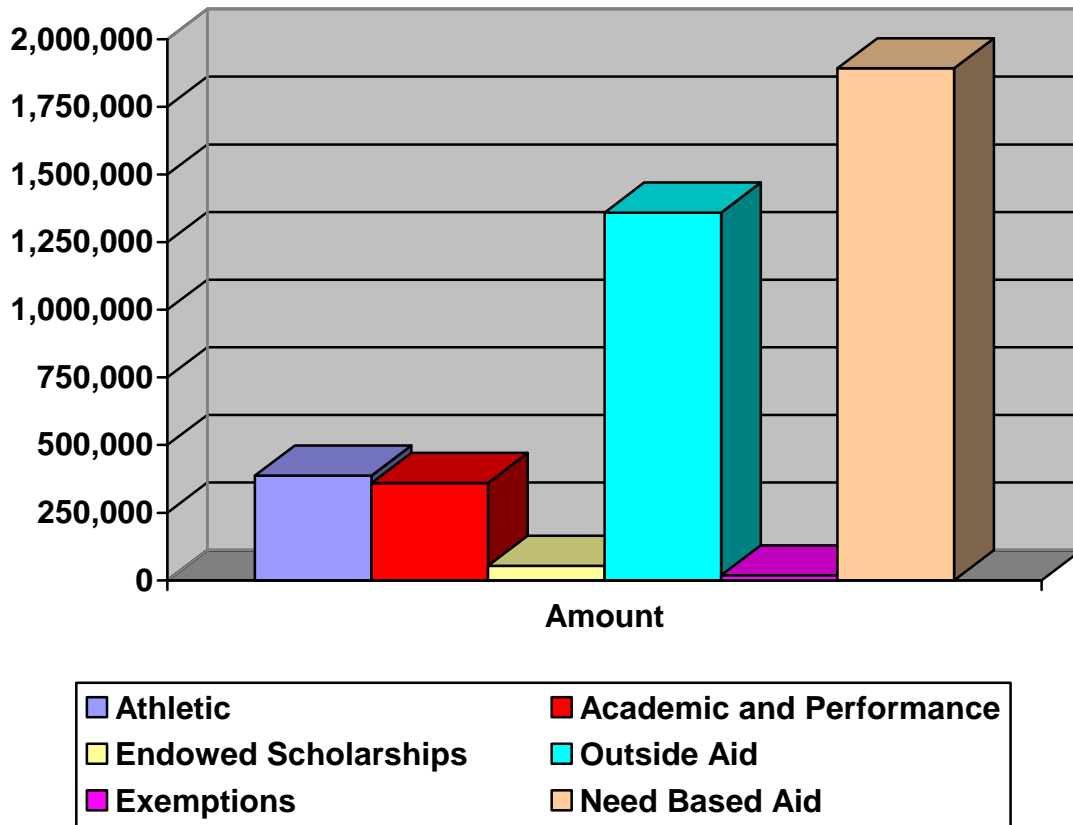
Program	Amount	% Increase/Decrease From Previous Year
Men's Baseball	128,788	8%
Women's Volleyball	56,434	-16%
Men's Basketball	73,813	-2%
Women's Basketball	85,651	0%
Rodeo	47,723	0%
TOTAL	\$ 387,409	-1%

Academic/Performance Scholarships (2006 - 2007)



Program	Amount	% Increase/Decrease From Previous Year
Performance:		
Art	2,080	- 46%
Band	93,938	- 4%
Choir	83,393	15%
Drama	79,807	43%
Journalism	7,754	21%
Speech	17,866	- 1%
Total Performance	\$ 284,838	
Faculty/Staff	40,469	- 13%
Panola	19,752	- 24%
Dean's	7,775	42%
Presidential	6,425	2,352%
TOTAL	\$ 359,259	8%

Summary of Financial Aid/Scholarships (2006 - 2007)

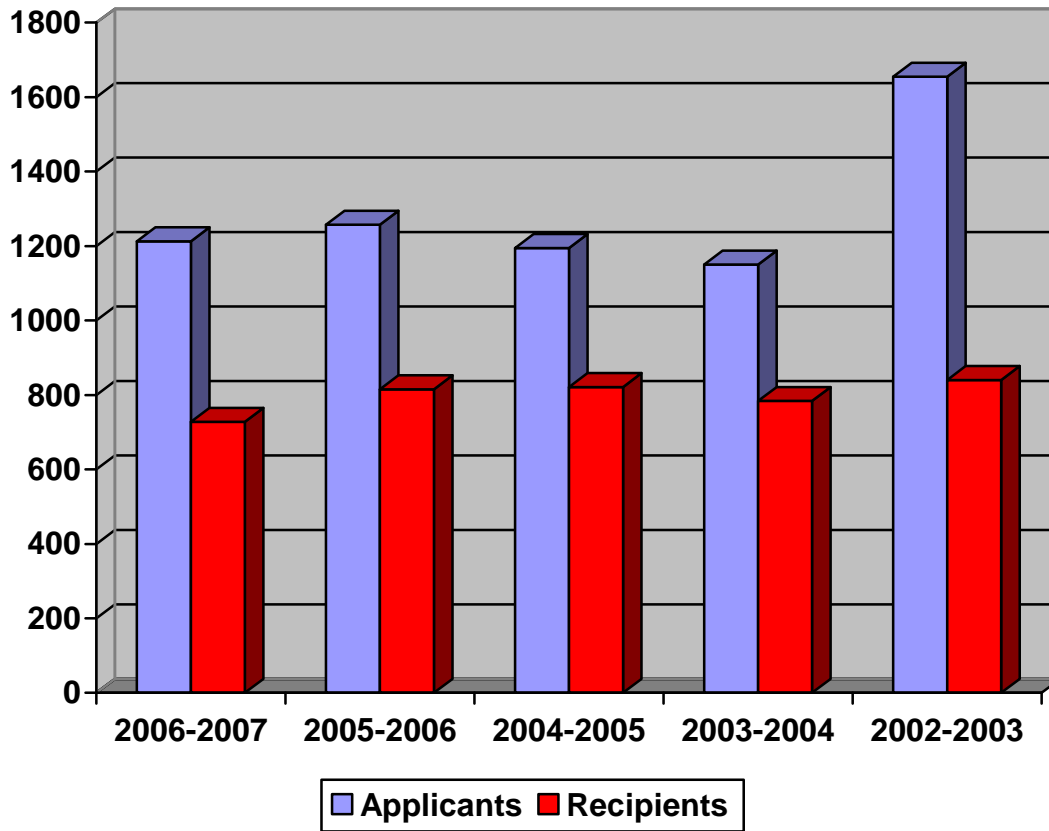


Program	Amount	% Increase/Decrease From Previous Year
Athletic	387,409	- 1%
Academic and Performance	359,259	8%
Endowed Scholarships	53,510	54%
Outside Aid *	1,358,645	174%
Exemptions **	18,141	304%
Need Based Aid	1,892,349	- 1%
TOTAL	\$ 4,069,313	20%

* any scholarship or grant not awarded by Panola College

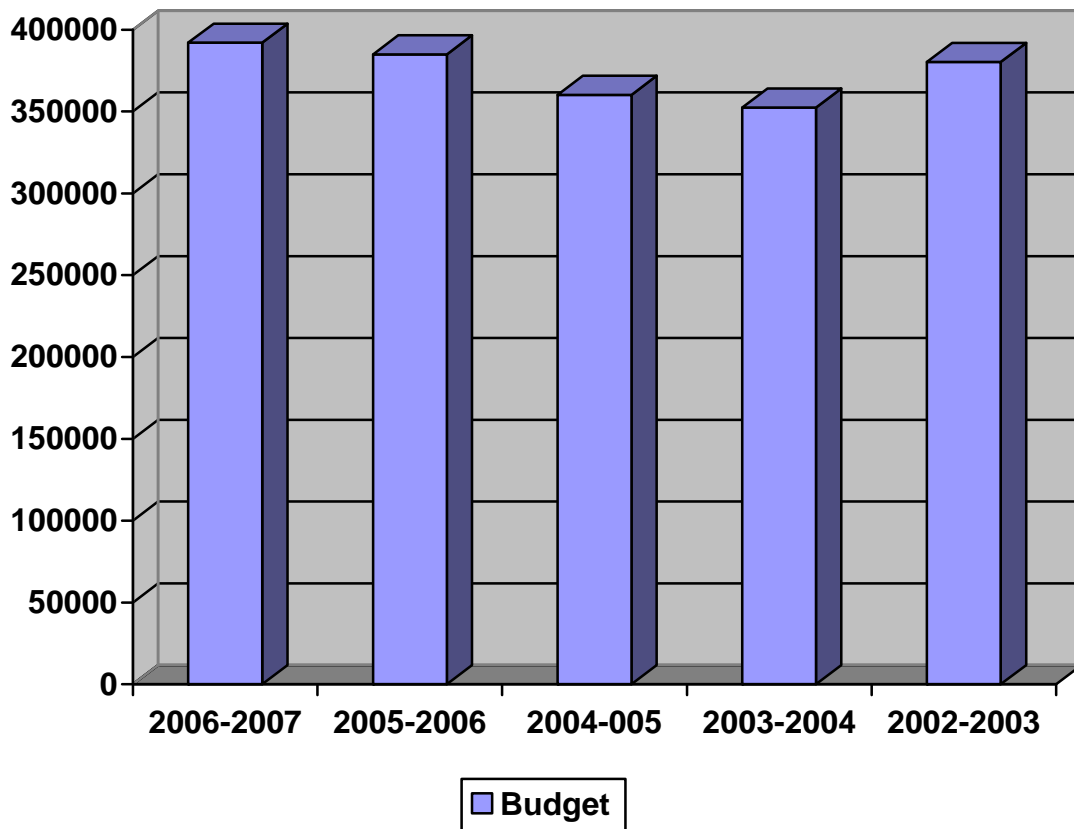
** exemptions are offered by the state for students in special populations

**Five Year Trend
Number of Financial Aid Applicants and Recipients
of Federal or State Aid**



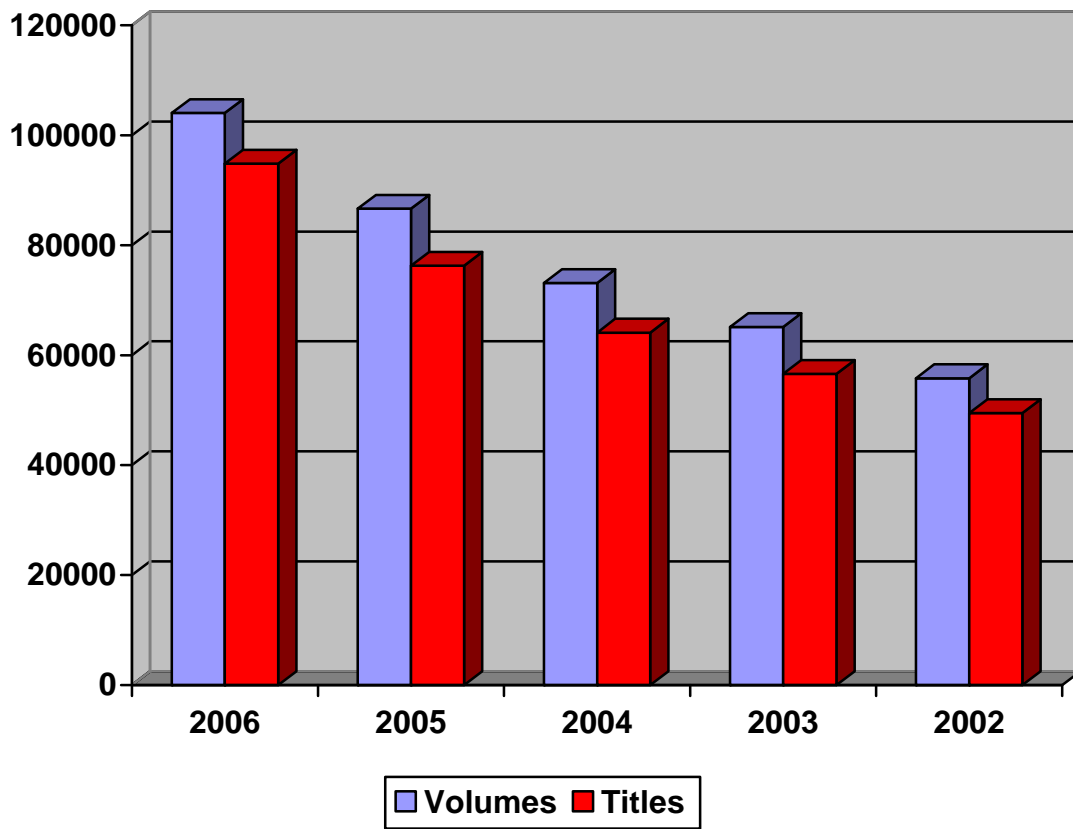
	2006-2007	2005-2006	2004-2005	2003-2004	2002-2003
Applicants	1213	1257	1195	1150	1655
Recipients	728	821	821	784	840
Percent	60%	65%	69%	68%	51%

Library Budget: 2002-2007



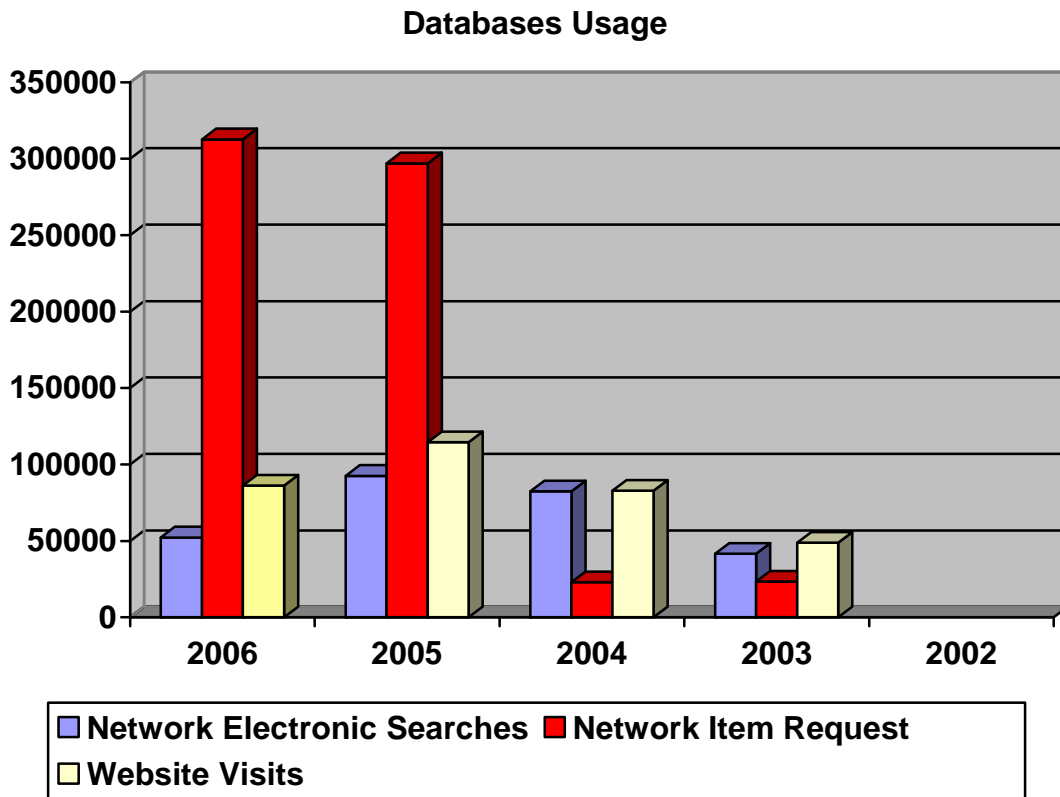
	2006-2007	2005-2006	2004-2005	2003-2004	2002-2003
Budget	\$392,062	\$384,903	\$360,274	\$352,485	\$380,296

Book Collection: 2002 - 2006



	2006	2005	2004	2003	2002
Volumes	104,086	85,635	73,161	65,151	55,822
Titles	94,834	76,270	64,121	56,616	49,467

Library Services: 2002 - 2006



Databases Usage	2006	2005	2004	2003	2002
Network Electronic Searches	52,336	92,619	82,527	41,597	<i>No Data</i>
Network Item Requests	312,665	297,051	22,970	23,414	<i>Available</i>
Website Visits	86,228	114,615	82,872	48,946	
Circulation Transactions	2006	2005	2004	2003	2002
General Collection	4,424	5,255	7,795	7,984	8,188
Reserve Collection	7,514	2,134	1,598	2,351	1,028
Digital Media			30,075	17,463	
Interlibrary Loans	2006	2005	2004	2003	2002
Lending	86	43	58	58	54
Borrowing	257	178	266	190	178
Information Services to Groups	2006	2005	2004	2003	2002
Presentations	42	49	64	55	24
People Served	631	387	1,097	1,101	679