

Panola College



Fact Book

2003-2005

Table of Contents

Acknowledgments.....	4
About Panola College	5
Statement of Vision.....	6
Mission Statement.....	6
Statement of Values	6
Institutional Goals 2005	7
Strategic Planning Objectives 2005-2007 Linked to Institutional Goals 2005.....	7
Panola College Board of Trustees.....	9
Administrative Organizational Chart.....	10
Academic and Career / Technical Instruction Organizational Chart	11
Student Services Department Organizational Chart	12
Harrison County.....	13
Harrison County.....	14
Geography.....	14
Population Statistics.....	14
Marion County	16
Geography.....	16
Population Statistics.....	16
Panola County.....	18
Geography.....	18
Population Statistics.....	18
Shelby County.....	20
Geography.....	20
Population Statistics.....	20
Five Year Fall / Spring Enrollment Report.....	23
Five Year Credit Enrollment By Full-time/Part-time Status Fall Semesters	24
Five Year Fall Credit Enrollment By Tuition Status and Geographical Distribution..	25
Five Year Trend of Credit Students By Ethnicity Fall Semesters	26
Five Year Trend of Credit Students by Gender Fall Semesters.....	27
Fall 2004 Credit Students Ethnic/Gender Breakdown.....	28
Five Year Fall Enrollment By Level.....	29
Five Year Trend of Fall Student Headcount Breakdown By Campus.....	30
Fall Distance Learning Duplicated Headcount Breakdown By Mode of Delivery	31
Definition of Distance Learning Modes of Delivery	32
Five Year Trend for Fall Distance Learning Enrollment Unduplicated Head Count ...	33
Five Year Trend Fall Student Distribution	34
Fall Contact Hours By Program Area: Academic and Career / Technical	35
Fall Contact Hours By Campus: Academic and Career / Technical.....	36
Fall Contact Hours By Campus: Continuing Education.....	37
Five Year Trend Fall Credit Academic / Career and Technical Full-Time Equivalent (FTE).....	38
Panola College: Programs Offered	39
Fall 2004 Enrollment by Declared Major Field of Study	40

Five Year Trend Total Number of Degrees and Certificates Awarded	42
Percent of First Time, Full-time College Students Who Entered Fall 2001 (Cohort Year 2001) and Completed* by Fall 2004.....	43
Percentage of the Fall 2001 Cohort Who Completed by Fall 2004.....	43
Percent of Student Athletes who Entered during the Fall of 2001 (cohort Year 2001) and Completed by 2004	44
Percentage of the Fall 2001 Athletic Sub-cohort.....	44
Who Completed by Fall 2004.....	44
Percent of Student Athletes By Sports Category (2001 Sub-cohort) Who Completed By 2004.....	45
Number of Full-time Faculty By Degree and Gender (Fall 2004).....	46
Full-time Employees By Ethnicity and Gender (Fall 2004)	47
Full-time Employees By Activity and Gender (Fall 2004).....	48
Revenues, Expenses, and Changes in Net Assets September 1, 2003 – August 31, 2004	49
Five Year Trend Need-based Aid Received by Students.....	50
Athletic Scholarships (2004 - 2005)	51
Academic/Performance Scholarships (2004 - 2005)	52
Summary of Financial Aid/Scholarships (2004 - 2005)	53
Five Year Trend Number of Financial Aid Applicants and Recipients.....	54
Library Budget: 2000-2005.....	55
Book Collection: 2000-2004.....	56
Library Services: 2000 - 2004.....	57

Introduction

Acknowledgments

This edition of the Panola College FACTBOOK reflects the diversity of the institution and provides a convenient and authoritative source of information about the college. Without the aid of the President's Office, the Vice President and Dean of Instruction's Office, the Business Affairs Office, Financial Aid, Records and Admissions, the Director of Human Resources, the Office of Workforce and Development and Continuing Education, and the M. P. Baker Library, the compilation of the data in the book would not have been possible.

Chris Blair

Chris Blair

Director of Institutional Research / Math Instructor
Panola College
1109 West Panola
Carthage, TX 75633
903-693-2075

About Panola College

In its almost sixty years of existence, Panola College has grown both in size and in the scope of services offered to its students and community. The college, established in 1947, was created to provide young people with the opportunity to earn the first two years of a traditional baccalaureate degree. The services the College offers have expanded greatly to meet community needs, providing a wide range of educational and training opportunities to citizens of all ages.

The College began operating in temporary buildings before the first two permanent buildings were erected in 1949. A 35-acre campus at the junction of Texas State Highway 315 and U.S. 79 in Carthage has been the school's home since its inception. There are now 16 permanent buildings with more than 135 acres available for future expansion. In addition to a comprehensive community college in Panola County, the College offers a variety of instructional opportunities in a four-county service area including Harrison, Marion, and Shelby Counties. These three counties became part of the College's official service area by legislative act in 1995.

Enrollment at the College has grown from fewer than 100 students at the first registration in January of 1948 to nearly 1800 in fall of 2004. The College provides many services that enrich the lives of individuals in the region.

Statement of Vision

Panola College is committed to excellence in instructional programs, student services, service to the community, and leadership in economic development and cultural enrichment of the region.

Mission Statement

Panola College shapes its mission around the needs of the people within its service area since its inception. As a two-year public community institution, Panola College is dedicated to providing excellence in education for its constituents. The range of educational offerings includes university transfer programs, technical and workforce programs, developmental courses designed to remedy academic deficiencies; and continuing education to enrich lives and improve skills. Our aim is to help each student achieve his or her full potential and to contribute to the further development of society.

Statement of Values

- **Commitment to Learning:** We believe in the importance of lifelong learning and will teach all students to obtain, to evaluate and to use information
- **Commitment to citizenship:** We are committed to improving the human condition through learning, and we strive to be a model for individuals in the community.
- **Commitment to diversity:** We believe the College should provide access to programs and services to a diverse community of men and women of all races, religions, origins, backgrounds, interests, and abilities.
- **Commitment to the concept of global community:** We will cultivate in our students an understanding of the people of all cultures.
- **Commitment to fiscal responsibility:** We believe in fulfilling the College's mission and its obligations to its students, faculty, staff, and community at-large with policies that ensure fiscal responsibility.
- **Commitment to faculty and staff:** We recognize the importance and contribution of all individuals who collectively create a learning environment and believe that all members of the college community should have the opportunity to obtain purposeful, gratifying, and productive lives.
- **Commitment to a quality campus environment:** We recognize the importance of providing a work and learning environment which is characterized by integrity, clear communications, open exchange of ideas, involvement in decision making, and respect for all individuals.

Institutional Goals 2005

1. To provide excellence in teaching and to develop and revise the curricula to meet the needs of the community.
2. To maintain and refine support systems for enhancing student success.
3. To provide appropriate facilities and a quality and productive work, study and learning environment.
4. To maintain a strong commitment to excellence through professional development.
5. To seek additional resources to support the College's mission.
6. To distribute resources in a manner that is productive, efficient and consistent with the College's mission.
7. To provide College systems and practices that deliver effective support and ensure public accountability.
8. To support the College's commitment to expanded enrollment, access, equity and diversity.
9. To provide leadership in the cultural and economic development of the College's service area.
10. To seek out and cultivate partnerships beneficial to Panola College.

Strategic Planning Objectives 2005-2007 ***Linked to Institutional Goals 2005***

- 1.1 Develop Leadership Academy
- 1.2 Develop excellence in teaching award
- 1.3 Develop leadership opportunities for faculty

- 2.1 Develop One-Stop Shop
- 2.2 Develop criteria and explore idea of Honors Award Program
- 2.3 Develop first-year program
- 2.4 Expand tutoring process and evaluate
- 2.5 Review and expand student organizations and projects (field trips), service learning partnerships, and instruction / self sufficiency
- 2.6 Develop opportunities for students/faculty/staff to interact
- 2.7 Provide transportation for fans to attend athletic away events
- 2.8 Increase employee participation in Panola College events
- 2.9 Target GED students for college enrollment (scholarship program)
- 2.10 Improve retention rate

- 3.1 Provide dorm Internet access
- 3.2 Install wireless hotspots
- 3.3 Remodel student center and provide Cyber Café
- 3.4 Provide new, technology equipped classrooms
- 3.5 Formalize a wellness program and include off-campus centers
- 3.6 Create partnerships for a swimming pool
- 3.7 Continue campus beautification project
- 3.8 Review safety protocol
- 3.9 Reconsider smoking policy

- 4.1 Provide grant writing workshop on campus
- 4.2 Provide leadership development for faculty/staff
- 4.3 Coordinate PC training to meet the college's diverse needs and write plan
- 4.4 Establish partnerships for educational and professional development

- 5.1 Research and write a title grant
- 5.2 Conduct an annual campaign

- 6.1 Review the budgeting process
- 6.2 Set up summer program

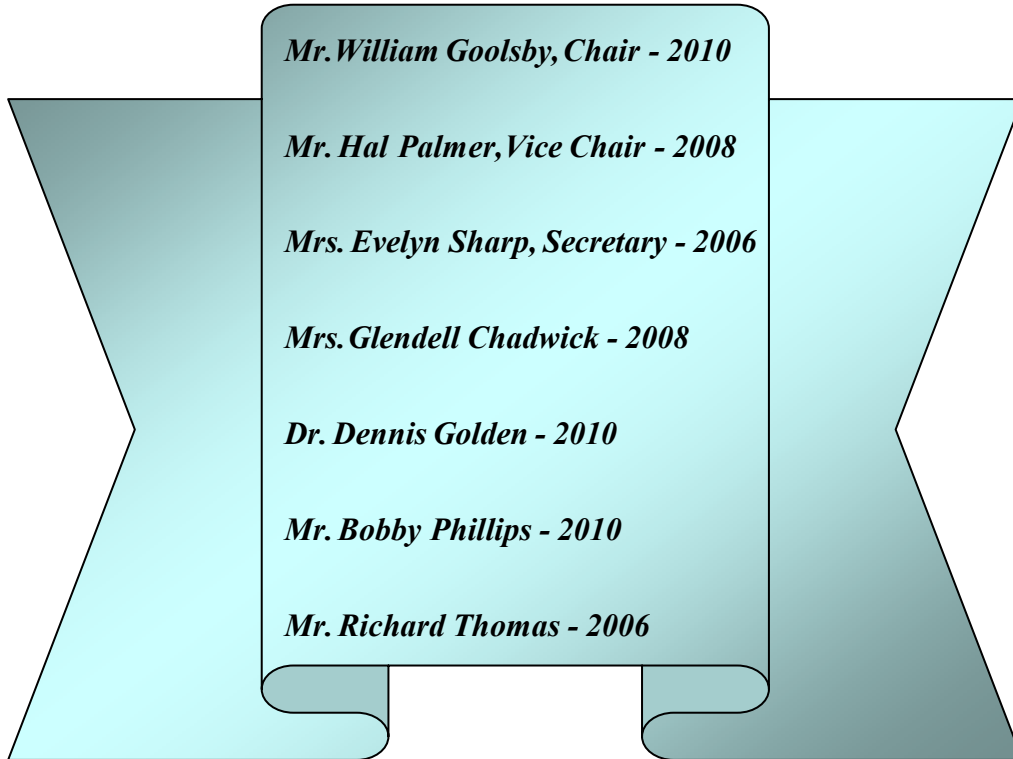
- 7.1 Expand use of imaging system
- 7.2 Expand use of electronic forms
- 7.3 Develop web reports

- 8.1 Actively recruit people of color and cultural diversity
- 8.2 Expand enrollment and scholarship programs (creative use of scholarships)
- 8.3 Create and administer survey to examine scheduling of classes
- 8.4 Continue to work with Barksdale Air Force Base
- 8.5 Review recruitment practices
- 8.6 Explore possibility of Senior College

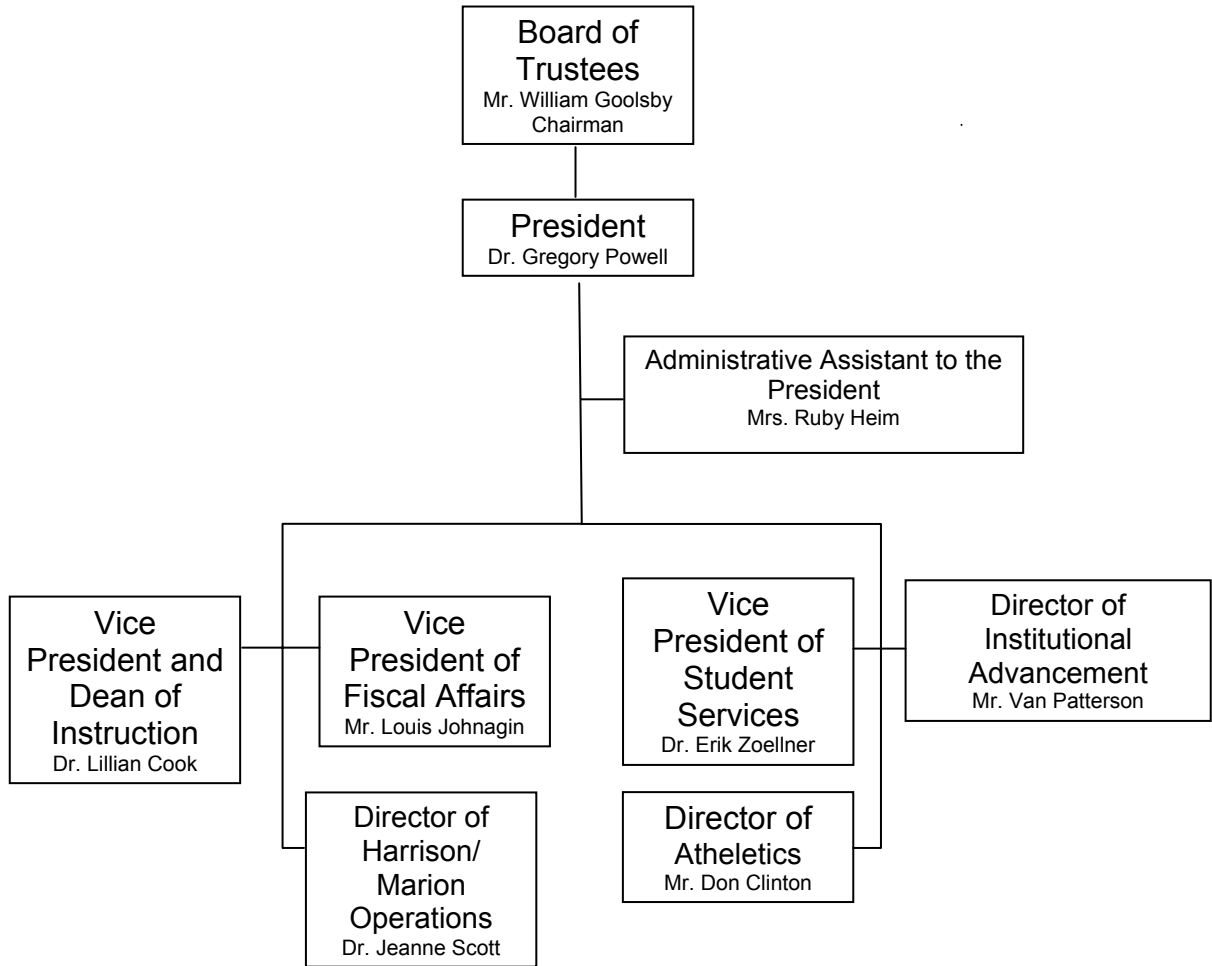
- 9.1 Expand economic development through partnerships based on training funds
- 9.2 Get listing of economic development board lists
- 9.3 Offer fine and performing arts programs outside Panola County
- 9.4 Provide exhibit space (in new library)

- 10.1 Develop and/or maintain relationships with ISD's and universities, government, and non-profit groups
- 10.2 Investigate telemedicine opportunities
- 10.3 Develop student health services through East Texas Medical Center
- 10.4 Continue partnerships with businesses and field training
- 10.5 Continue to develop distance learning course exchanges with other colleges

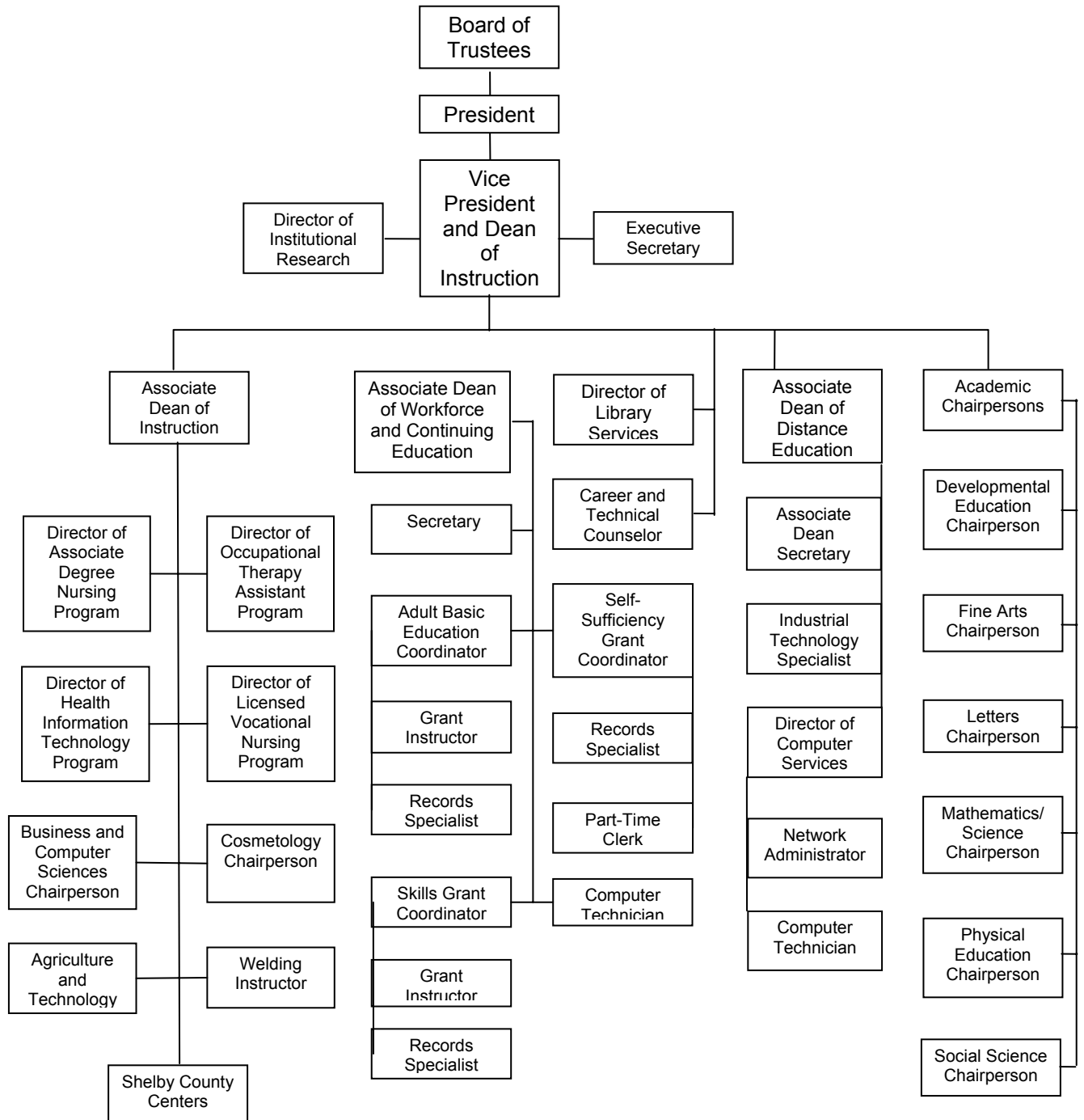
Panola College Board of Trustees



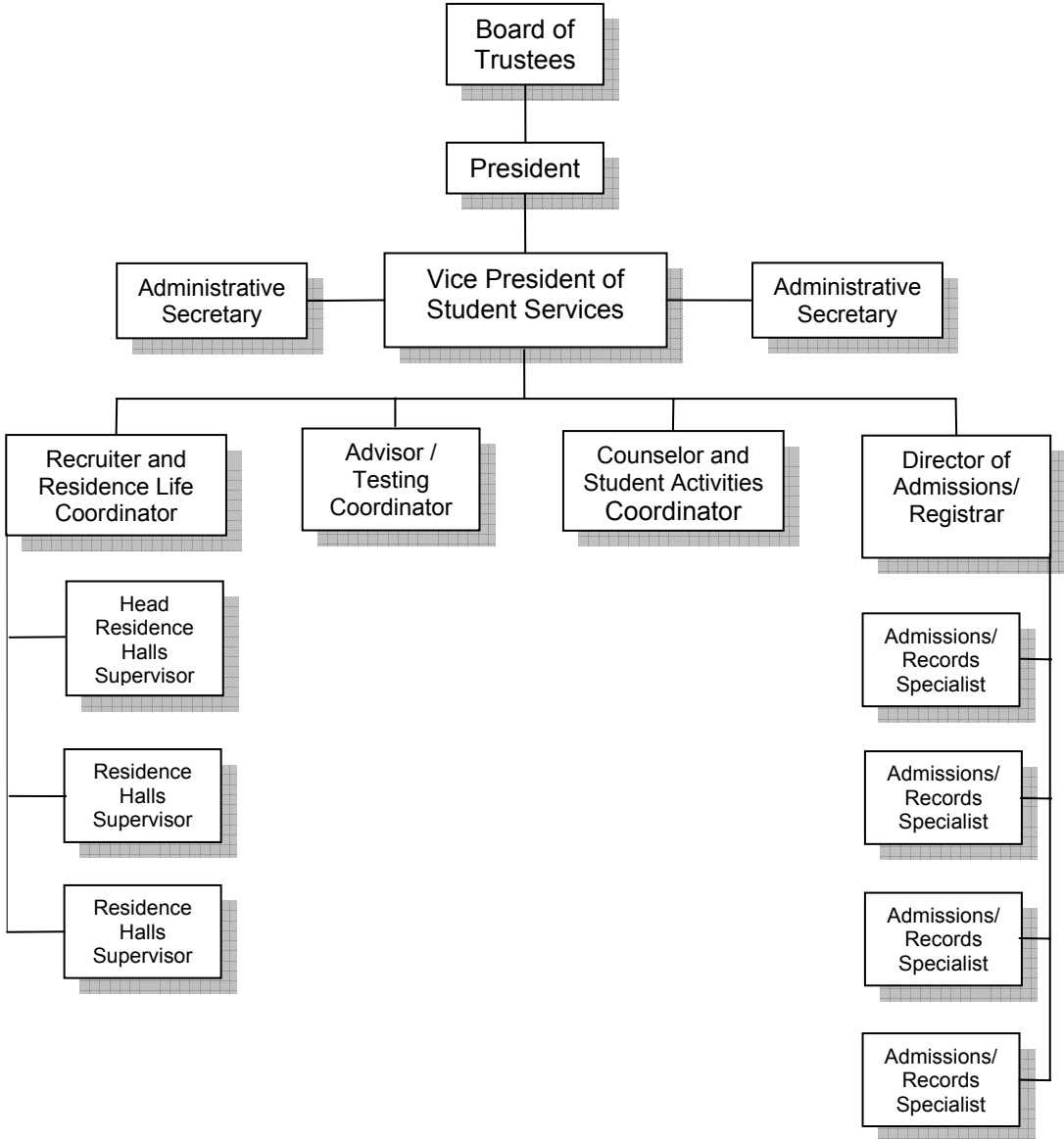
Administrative Organizational Chart



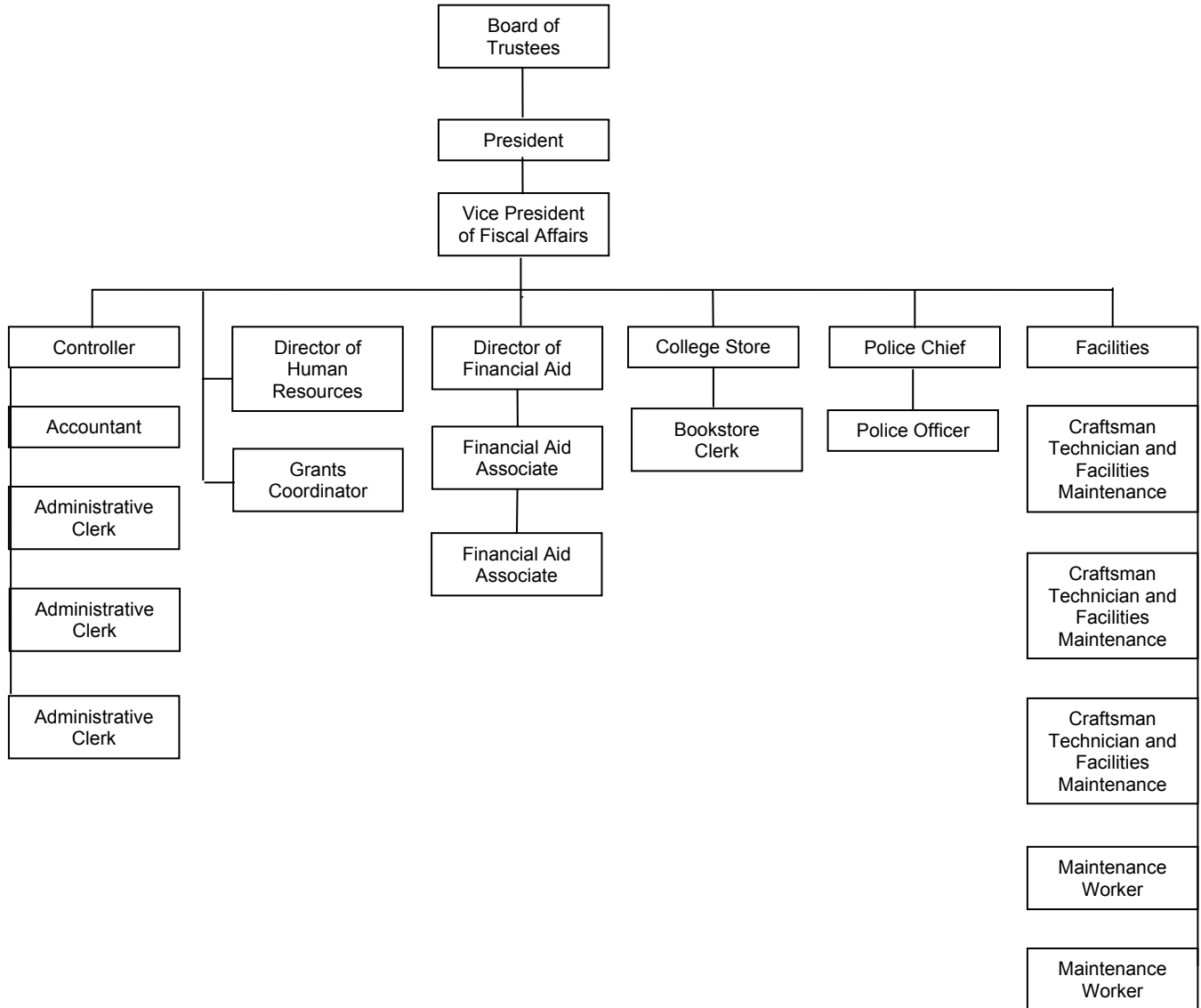
Academic and Career / Technical Instruction Organizational Chart



Student Services Department Organizational Chart



Fiscal Affairs Department Organizational Chart



Harrison County

Geography

The county of Harrison is the 49th largest in population of the 254 counties in Texas with an estimated population of 62,743 in January 2004.¹ Harrison County experienced a 1% increase in population during since the 2000 census compared to the state increase of 6.1%. The county seat is Marshall (23,935) and Panola College's Marshall Center is housed in this city in the Marshall Mall. Other towns found within the county include Elysian Fields (300); Hallsville (2,813); Harleton (260); Karnack (775); Waskom (2,110); and part of Longview. Harrison County is a metro county which lies within the East Texas Quality Workforce Planning region, administered by the Technology Partnership Organization.

The county consists of 899 square miles with a population density of 69.1 residents per square mile in 2000. The average density in Texas is 79.6 persons per square mile. The county is over half forested and includes the Sabine River and Caddo Lake.

Population Statistics

The Census Bureau reports the county's race/ethnic distribution in 2000 to be:²

	<i>Harrison County</i>	<i>Texas</i>
White	69.3%	71.0%
Black	24.0%	11.5%
Hispanic ³	4.6%	32.0%
Asian/Pacific Islander	0.3%	2.8%
Native American	0.3%	0.6%
Other	2.9%	11.7%

The 2000 Census estimates for Texas show a population composition according to age as follows:

<i>Age</i>	<i>Harrison County</i>	<i>Texas</i>
0-4	6.5%	7.8%
5-15	15.3%	15.7%
16-24	15.1%	15.2%
25-44	27.0%	31.1%
45-64	23.0%	20.2%
65 plus	13.1%	9.9%

¹ January, 2004 population estimates for Texas counties and towns were obtained from the Texas State Data Center and Office of the State Demographer

² Profile of general demographic characteristics 2000, US Census Bureau, Census 2000, Harrison County, Texas

³ Hispanics may be of any race, so also are included in other applicable race categories. For this reason, the total percentage may be more than 100%

If the population cohort 45 and over is higher than the state average, as it is in Harrison County, this suggests a stable, mature population comprised of mainly "empty-nesters," retirees and the aged. When the 25-44-age cohort is higher than the state average, this is a healthy economic situation since this group contains the greatest share of the productive labor force. This is not the case in Harrison County. Decreases over time in this group, especially when similar changes are not occurring statewide, can indicate a poor labor market.

The county had about 23,087 households in 2000 according to the census. This represents an average of 2.69 persons per household. Statewide, there are 2.82 persons per household in 2000 with roughly 7.39 million Texas households. Nearly 40% (38.8%) of Harrison county households have children under 18 in residence – these are our potential college students.

Local industry consists primarily of manufacturing, education, health and social services, and retail trade. Altogether, there are about 26,290 people over age sixteen employed with an average yearly income of \$20,666 which compares to Texas as a whole average yearly income of \$27,752. The unemployment rate in the county is 5.7% compared to 4.2% statewide (year 2000 data). County-wide 4134 people are receiving food-stamp assistance with 967 receiving TANF.⁴ It has been estimated that 16.7% of Harrison County residents live below the poverty level, compared to 15.4% rate statewide Eight thousand, three hundred forty-three people are Medicaid eligible, including families and children.⁵

There are six independent school districts in the county: Elysian Fields, Hallsville, Harleton, Karnack, Marshall, and Waskom ISD with a grade 7-12 enrollment of 6395 and an average drop out rate of 1.0% compared to the state dropout rate of 1.3%.⁶

Tracking graduates from FY 2003 shows that 62% of Elysian Fields graduates, 16% of Marshall graduates, and 35% of Waskom graduates who were known to have enrolled in a public Texas college for Fall 2003 enrolled in Panola College. Panola College information was not available from this source for Hallsville, Harleton, or Karnack ISDs.⁷

⁴ Temporary Assistance for Needy Families

⁵ Texas Department of Health, Selected Facts for Harrison County - 2000

⁶ Texas Education Agency Secondary School Completion and Dropouts in Texas Public Schools, Supplemental District Data, 2000-2001

⁷ Texas Higher Education Coordinating Board and Texas Education Agency publication. Note this is not the percentage of the entire graduating class, but only those who were known to enroll in a Texas public college in Fall 2003.

Marion County

Geography

The county of Marion is the 185th largest in population of the 254 counties in Texas with an estimated population of 10,693 as of January, 2004.⁸ Marion County's population decreased by an estimated 2.3% since the 2000 census. The county seat of Marion is Jefferson (2,024) which is by far the most populated city in the county. Marion County is a rural county which lies within the East Texas Workforce Planning region, administered by the Technology Partnership Organization.

The county consists of 381 square miles with a 2000 population density estimate of 28.7 residents per square mile. The average density in Texas was estimated to be 79.6 persons per square mile for that same time period. The county is three-quarters forested with pines and hardwoods. The watershed drains to Caddo Lake, Lake O' the Pines, and Cypress Bayou

Population Statistics

The Census Bureau reports the county's race/ethnic distribution in 2000 to be:⁹

	<i>Marion County</i>	<i>Texas</i>
White	71.5%	71.0%
Black	23.9%	11.5%
Hispanic ¹⁰	2.4%	32.0%
Asian/Pacific Islander	0.2%	2.8%
Native American	0.8%	0.6%
Other	0.8%	11.7%

The 2000 Census estimates for Texas show a population composition according to age as follows:

<i>Age</i>	<i>Marion County</i>	<i>Texas</i>
0-4	5.6%	7.8%
5-15	12.7%	15.7%
16-24	10.5%	15.2%
25-44	23.6%	31.1%
45-64	28.4%	20.2%
65 plus	19.2%	9.9%

⁸ January, 2004 population estimates for Texas counties and towns were obtained from the Texas State Data Center and Office of the State Demographer

⁹ Profile of general demographic characteristics 2000, US Census Bureau, Census 2000, Marion County, Texas

¹⁰ Hispanics may be of any race, so also are included in other applicable race categories. For this reason, the total percentage may be more than 100%

If the population cohort 45 and over is higher than the state average as it is in Marion County, this suggests a stable, mature population comprised of mainly "empty-nesters," retirees and the aged. When the 25-44-age cohort is higher than the state average, this is a healthy economic situation since this group contains the greatest share of the productive labor force. Decreases over time in this group as is the case in Marion County, especially when similar changes are not occurring statewide, can indicate a poor labor market.

The county had about 4,610 households in 2000 according to the census. This represents an average of 2.35 persons per household. Statewide, there are 2.82 persons per household in 2000 with roughly 7.39 million Texas households. Twenty-nine percent of the households in Marion County have children under 18 in residence.

Local industry consists primarily of tourism, timber and food processing. Altogether, there are about 4,082 people sixteen years of age or older employed with an average yearly income of \$16,315 compared to the state average of \$27,752. The unemployment rate in the county is 8.4% compared to 4.2% statewide (year 2000 data). County-wide 1286 people are receiving food-stamp assistance with 316 receiving TANF.¹¹ It has been estimated that 22.4% of Marion County residents live below the poverty level, compared to 15.4% rate statewide. Two thousand, two hundred nine people are Medicaid eligible, including families and children.¹²

There is one independent school district in the county: Jefferson ISD with a grade 7-12 enrollment of 812 students and an average drop out rate of 1.7% compared to the state dropout rate for the same age level of 1.3%.¹³

¹¹ Temporary Assistance for Needy Families

¹² Texas Department of Health, Selected Facts for Marion County - 2000

¹³ Texas Education Agency Secondary School Completion and Dropouts in Texas Public Schools, Supplemental District Data, 2000-2001

Panola County

Geography

The county of Panola has the 104th largest in population of the 254 counties in Texas with an estimated population of 22,644 in January, 2004.¹⁴ Panola County's population decreased an estimated 0.5% since the 2000 census, compared to the state rate of population growth of 2.3%. The city of Carthage, with an estimated population of 6,937, is the county seat and is the site of Panola College. Other towns in the county include: Beckville (745); Clayton (79); DeBerry (191); Gary (300); Long Branch (181); Panola (296); and Tatum (1182). Panola County is a rural county which lies within the East Texas Workforce service delivery area and the East Texas Quality Workforce Planning region, administered by the Technology Partnership Organization.

The county consists of 869 square miles with a 2000 population density 28.4 residents per square mile. The average density in Texas is 79.6 persons per square mile. Panola county is 60% forested, rolling plains that are broken by the Sabine River, Murvaul Creek and Toledo Bend Reservoir.

Population Statistics

The Census Bureau reports the county's race/ethnic distribution in 2000 to be:¹⁵

	<i>Panola County</i>	<i>Texas</i>
White	77.5%	71.0%
Black	17.7%	11.5%
Hispanic ¹⁶	3.5%	32.0%
Asian/Pacific Islander	0.2%	2.8%
Native American	0.4%	0.6%
Other	1.9%	11.7%

The 2000 Census estimates for Texas shows a population composition according to age as follows:

<i>Age</i>	<i>Panola County</i>	<i>Texas</i>
0-4	6.2%	7.8%
5-15	14.1%	15.7%
16-24	14.1%	15.2%
25-44	25.1%	31.1%
45-64	24.6%	20.2%
65 plus	15.9%	9.9%

¹⁴ January, 2004 population estimates for Texas counties and towns were obtained from the Texas State Data Center and Office of the State Demographer

¹⁵ Profile of general demographic characteristics 2000, US Census Bureau, Census 2000, Panola County, Texas

¹⁶ Hispanics may be of any race, so also are included in other applicable race categories. For this reason, the total percentage may be more than 100%

If the population cohort 45 and over is higher than the state average , as it is in Panola County, this suggests a stable, mature population comprised of mainly "empty-nesters," retirees and the aged. When the 25-44-age cohort is higher than the state average, this is a healthy economic situation since this group contains the greatest share of the productive labor force. Decreases over time in this group, as is the case with Panola County, especially when similar changes are not occurring statewide, can indicate a poor labor market.

The county had about 8,821 households in 2000 according to the census. This represents an average of 2.53 persons per household. Statewide, there are 2.82 persons per household in 2000 with roughly 7.39 million Texas households. Thirty-six percent of the households in Panola County have children under 18 in residence.

Local industry consists primarily of gas processing, oil-field operations, agribusinesses, forestry, and other varied types of manufacturing. Altogether, there are about 9,075 people age 16 or older employed in Panola County with an average wage per job of \$23,867 in 2000, and \$25, 004 in 2002.. This compares with an average yearly income of \$27,752 for Texas as a whole in 2000. The unemployment rate in the county is 7.8% compared to 4.2% statewide (year 2000 data). County-wide 1687 people are receiving food-stamp assistance with 499 receiving TANF.¹⁷ Three thousand, two hundred thirteen people are Medicaid eligible, including families and children.¹⁸

There are three independent school districts and one charter school in the county: Beckville, Carthage and Gary ISD and Panola Charter School with a grade 7-12 enrollment of 1966 and an average drop out rate of 0.3% compared to the state dropout rate of 1.3%.¹⁹

Tracking graduates from FY 2003 shows that 59% of Carthage graduates and 44% of Beckville graduates who were known to have enrolled in a Texas public college for Fall 2003 enrolled in Panola College. Panola College information was not available from this source for Gary ISD or the Panola Charter School..²⁰

¹⁷ Temporary Assistance for Needy Families

¹⁸ Texas Department of Health, Selected Facts for Panola County - 2000

¹⁹ Texas Education Agency Secondary School Completion and Dropouts in Texas Public Schools, Supplemental District Data, 2000-2001

²⁰ Texas Higher Education Coordinating Board and Texas Education Agency publication. Note this is not the percentage of the entire graduating class, but only those who were known to enroll in a Texas public college in Fall 2003.

Shelby County

Geography

The county of Shelby is the 96th largest in population of the 254 counties in Texas with an estimated population of 25,339 in January 2004.²¹ Shelby County's population has had an estimated increase of 0.5% since the 2000 census, compared to the state rate of population growth of 2.3%. The county seat of Shelby is Center (5,678), so named because of its location in the center of the county. Panola College's Shelby College Center and Shelby Regional Training Center are located in Center, Texas. Other towns in the county include Timpson (1,138), Tenaha (1,031), Joaquin (927), and Shelbyville (215).

The county consists of 794 square miles with a 2000 population density 31.8 residents per square mile. The average density in Texas is 79.6 persons per square mile. The land is partly hills with much bottom land. 67,762 acres are in a national forest. Bodies of water include Attoyac Bayou and Toledo Bend Reservoir with many other streams.

Population Statistics

The Census Bureau reports the county's race/ethnic distribution in 2000 to be:²²

	<i>Shelby County</i>	<i>Texas</i>
White	69.6%	71.0%
Black	19.4%	11.5%
Hispanic ²³	9.9%	32.0%
Asian/Pacific Islander	0.2%	2.8%
Native American	0.4%	0.6%
Other	5.9%	11.7%

The 2000 Census estimates for Texas show a population composition according to age as follows:

<i>Age</i>	<i>Shelby County</i>	<i>Texas</i>
0-4	7.0%	7.8%
5-15	15.1%	15.7%
16-24	13.4%	15.2%
25-44	25.8%	31.1%
45-64	22.3%	20.2%
65 plus	16.5%	9.9%

²¹ January, 2004 population estimates for Texas counties and towns were obtained from the Texas State Data Center and Office of the State Demographer

²² Profile of general demographic characteristics 2000, US Census Bureau, Census 2000, Shelby County, Texas

²³ Hispanics may be of any race, so also are included in other applicable race categories. For this reason, the total percentage may be more than 100%

If the population cohort 45 and over is higher than the state average as it is in Shelby County, this suggests a stable, mature population comprised of mainly "empty-nesters", retirees and the aged. When the 25-44-age cohort is higher than the state average, this is a healthy economic situation since this group contains the greatest share of the productive labor force. Decreases over time in this group, as is the case in Shelby County, especially when similar changes are not occurring statewide, can indicate a poor labor market.

The county had about 9,595 households in 2000 according to the census. This represents an average of 2.59 persons per household. Statewide, there are 2.82 persons per household in 2000 with roughly 7.39 million Texas households. Thirty-seven percent of the households in Shelby County have children under 18 in residence.

Local industry consists primarily of broiler, egg production, cattle, timber and tourism. Altogether, there are about 9,801 people age 16 or older employed in Shelby County with an average wage per job of \$20,925 in 2000. This compares with an average yearly income of \$27,752 for Texas as a whole. The unemployment rate in the county is 6.6% compared to 5.4% statewide (year 2000 data). County-wide 2351 people are receiving food-stamp assistance with 709 receiving TANF.²⁴ Five thousand, six people are Medicaid eligible, including families and children.²⁵

There are six independent school districts in the county: Center, Excelsior, Joaquin, Shelbyville, Tenaha, and Timpson ISD with a grade 7-12 enrollment of 2,188 and an average drop out rate of 1.5% compared to the state dropout rate of 1.3%.²⁶

Tracking graduates from FY 2003 shows that 34% of Center graduates and 57% of Joaquin graduates, 55% of Shelbyville graduates, and 55% of Timpson graduates who were known to have enrolled in a Texas public college for Fall 2003 enrolled in Panola College. Panola College information was not available from this source for Tenaha.²⁷

²⁴ Temporary Assistance for Needy Families

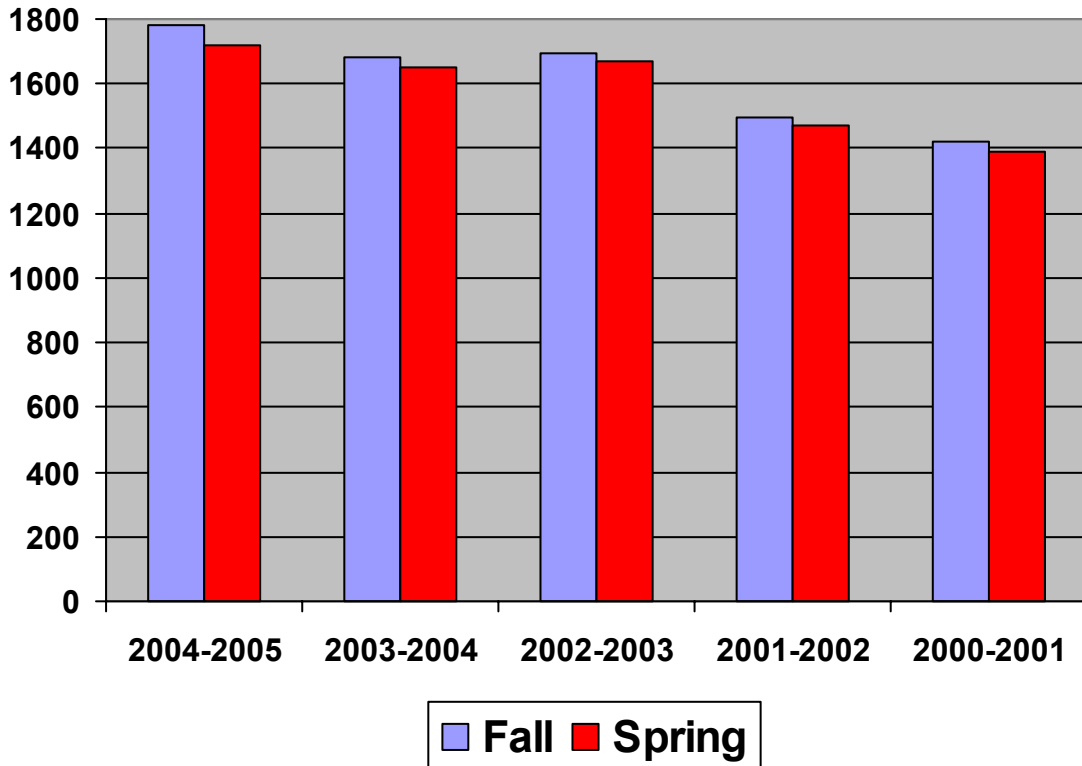
²⁵ Texas Department of Health, Selected Facts for Shelby County - 2000

²⁶ Texas Education Agency Secondary School Completion and Dropouts in Texas Public Schools, Supplemental District Data, 2000-2001

²⁷ Texas Higher Education Coordinating Board and Texas Education Agency publication. Note this is not the percentage of the entire graduating class, but only those who were known to enroll in a Texas public college in Fall 2003.

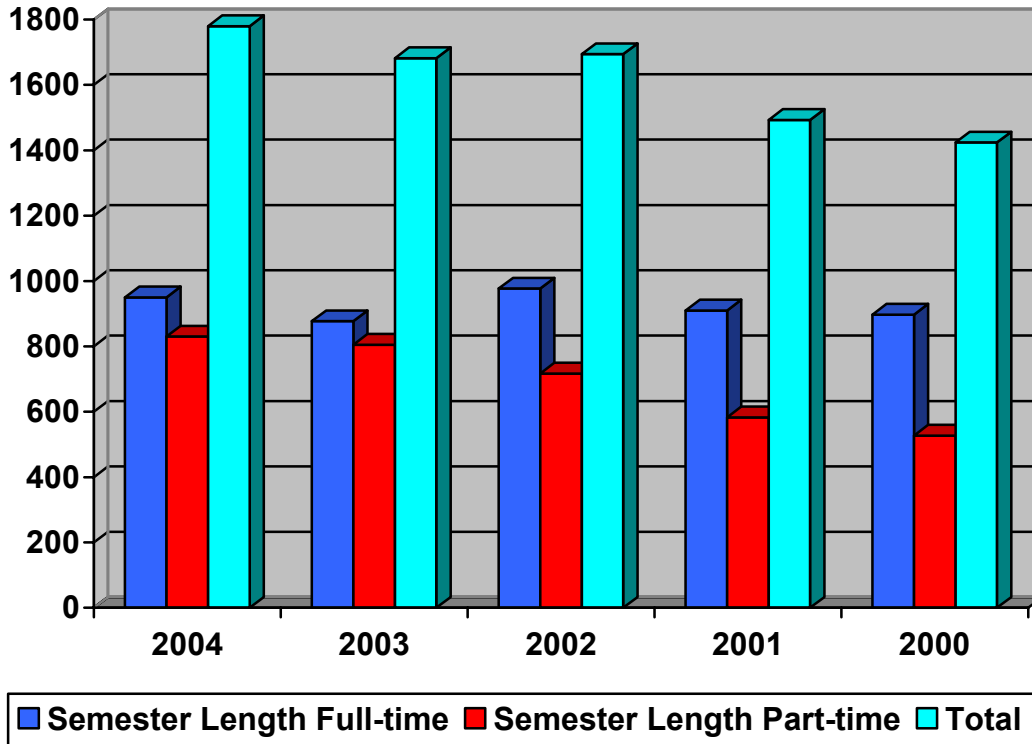
Institutional Data

Five Year Fall / Spring Enrollment Report



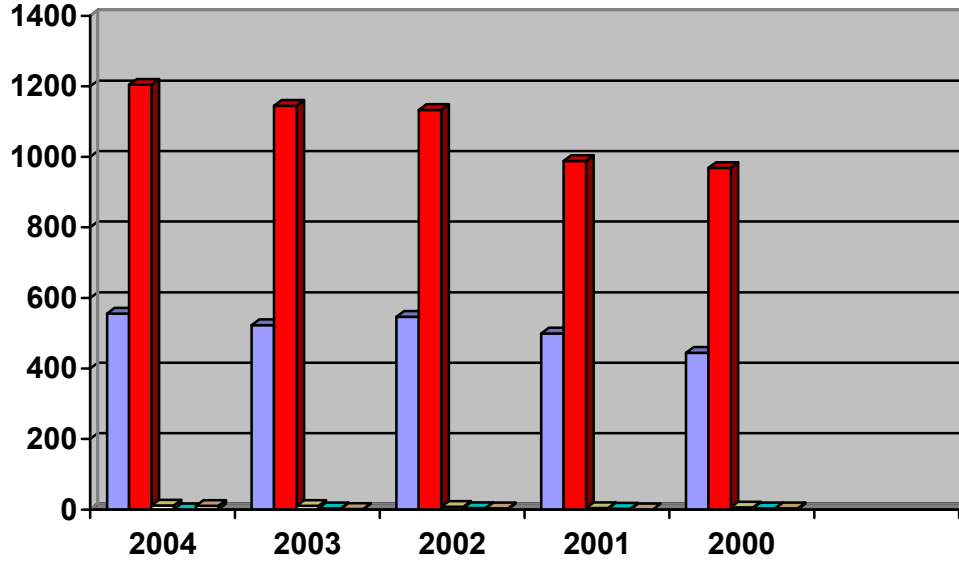
Year		2004-2005	2003-2004	2002-2003	2001-2002	2000-2001
Number of Students	Fall	1780	1682	1694	1493	1424
	Spring	1720	1654	1671	1471	1392

**Five Year Credit Enrollment By Full-time/Part-time Status
Fall Semesters**



Status	2004	2003	2002	2001	2000
Semester Length Full-time	950	877	977	910	897
Semester Length Part-time	830	805	717	583	527
Total	1780	1682	1694	1493	1424

Five Year Fall Credit Enrollment By Tuition Status and Geographical Distribution

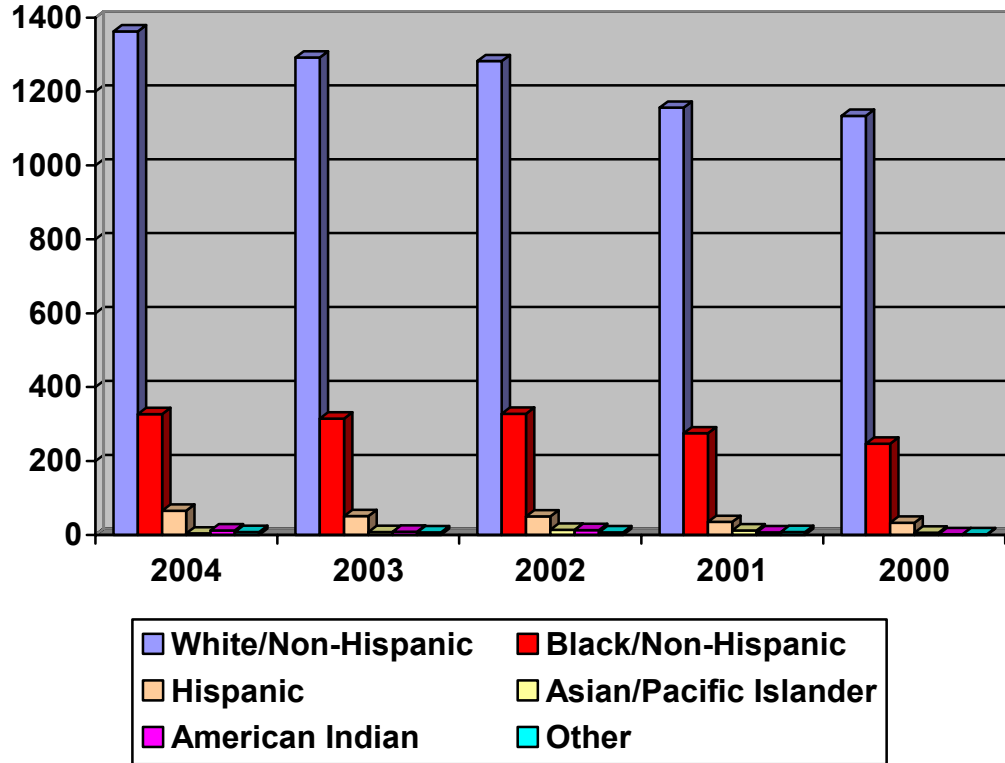


■ In-County	■ Out-of-County (includes LA)
■ Out-of-State (excludes LA)	■ Foreign
■ Exemption waivers (includes LA)	

Tuition Status	2004	2003	2002	2001	2000
In-County	555	523	546	499	444
Out-of-County (includes LA)	1204	1145	1133	988	968
Out-of-State (excludes LA)	11	10	8	4	6
Foreign	0	3	4	2	3
Exemption waivers (includes LA)	10	1	3	0	3
Total	1780	1682	1694	1493	1424

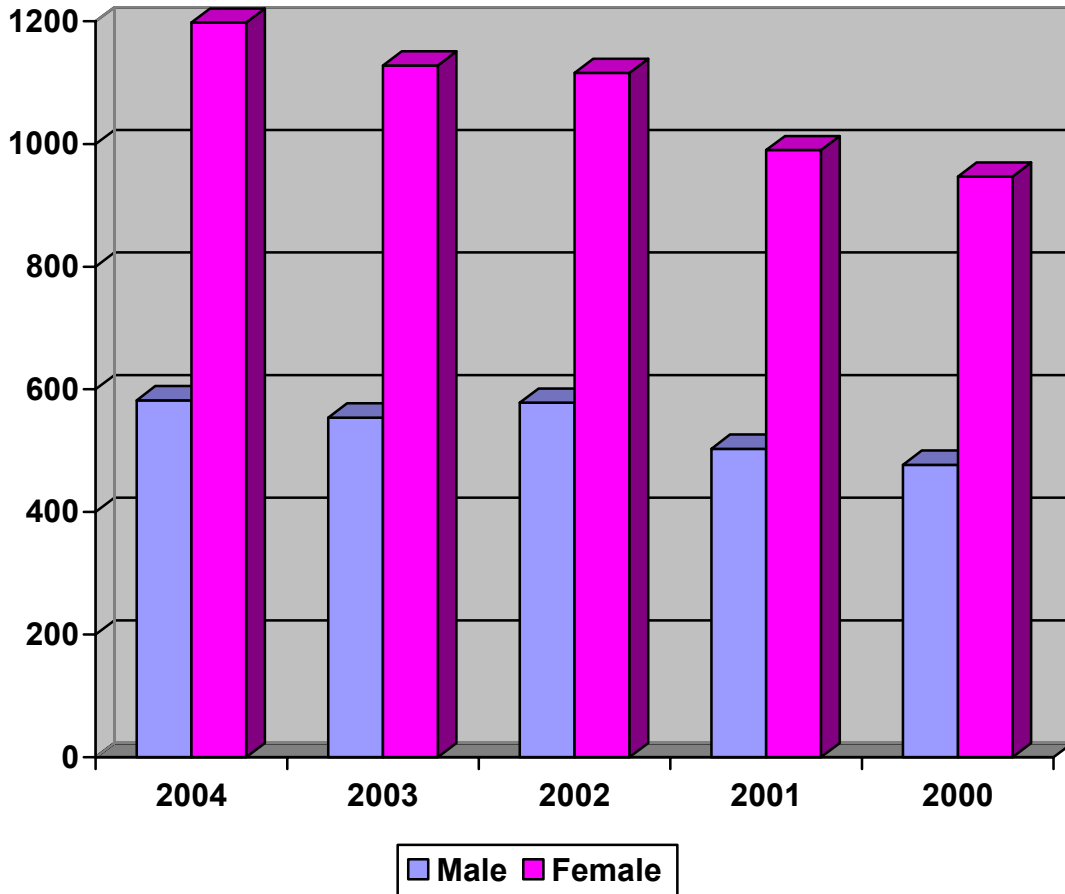
Geographic Distribution	2004	2003	2002	2001	2000
In-State	1610	1553	1580	1400	1343
Out-of-State	161	125	110	91	78
Foreign	9	4	4	2	3
Total	1780	1682	1694	1493	1424

**Five Year Trend of Credit Students By Ethnicity
Fall Semesters**



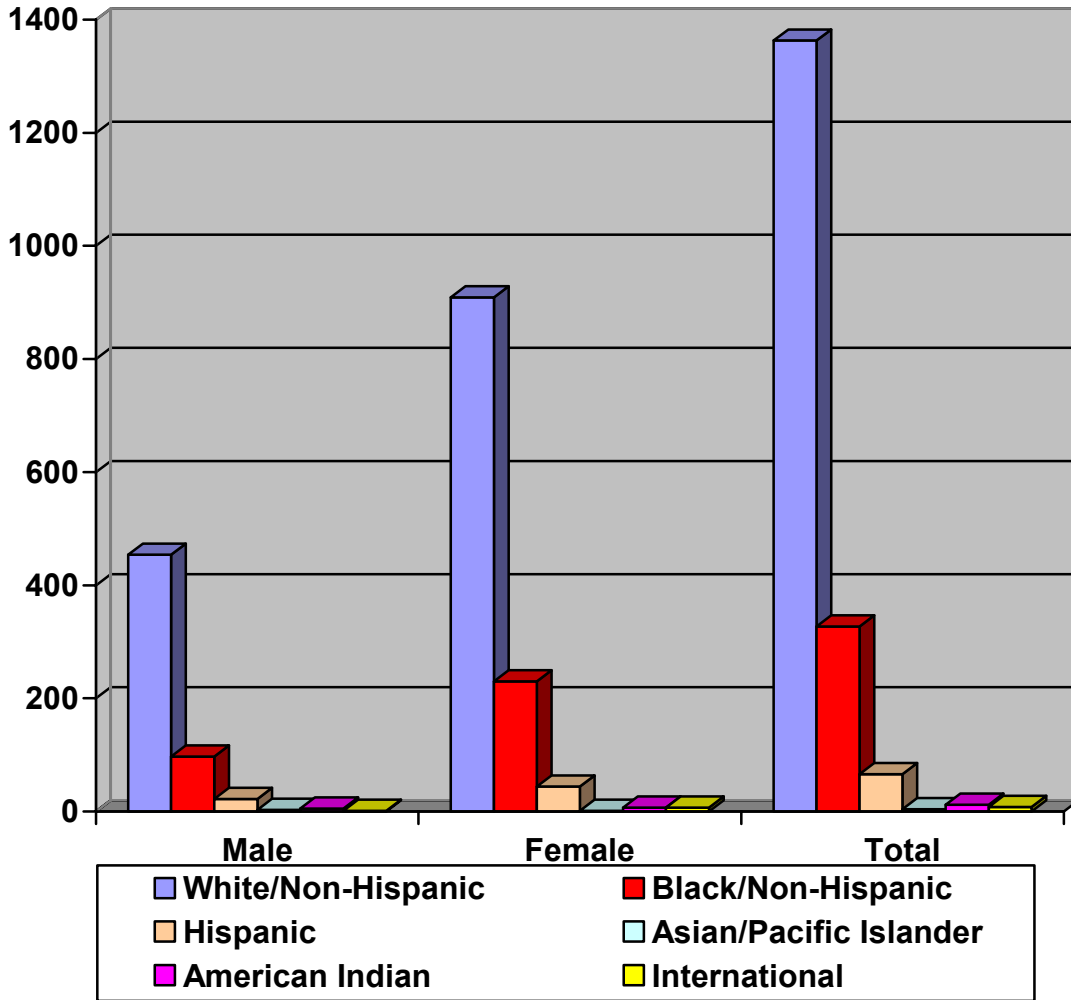
Ethnic Group	2004	2003	2002	2001	2000
White/Non-Hispanic	1363	1292	1282	1156	1134
Black/Non-Hispanic	327	315	328	275	247
Hispanic	66	51	50	35	33
Asian/Pacific Islander	4	8	14	12	6
American Indian	12	9	13	7	2
Other	8	7	7	8	2
Total	1780	1682	1694	1493	1424

**Five Year Trend of Credit Students by Gender
Fall Semesters**



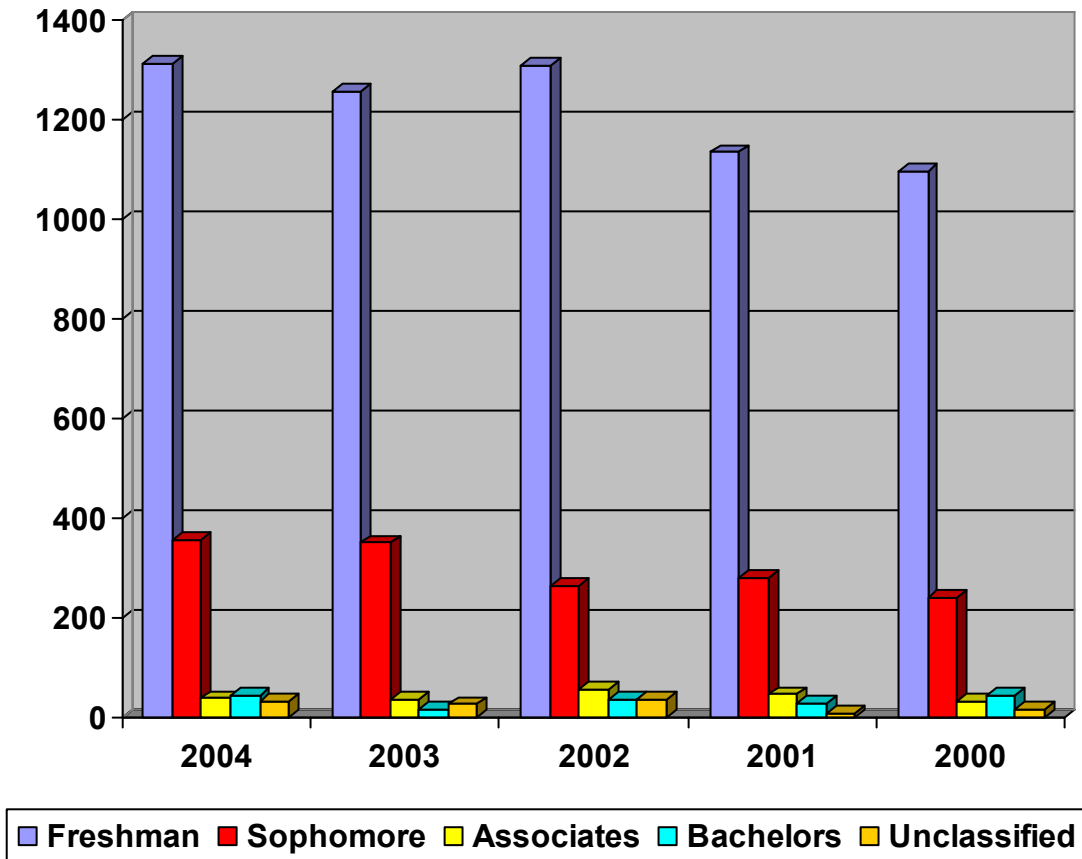
Classification	2004	2003	2002	2001	2000
Male	582	554	578	503	477
Female	1198	1128	1116	990	947
Total	1780	1682	1694	1493	1424

Fall 2004 Credit Students Ethnic/Gender Breakdown



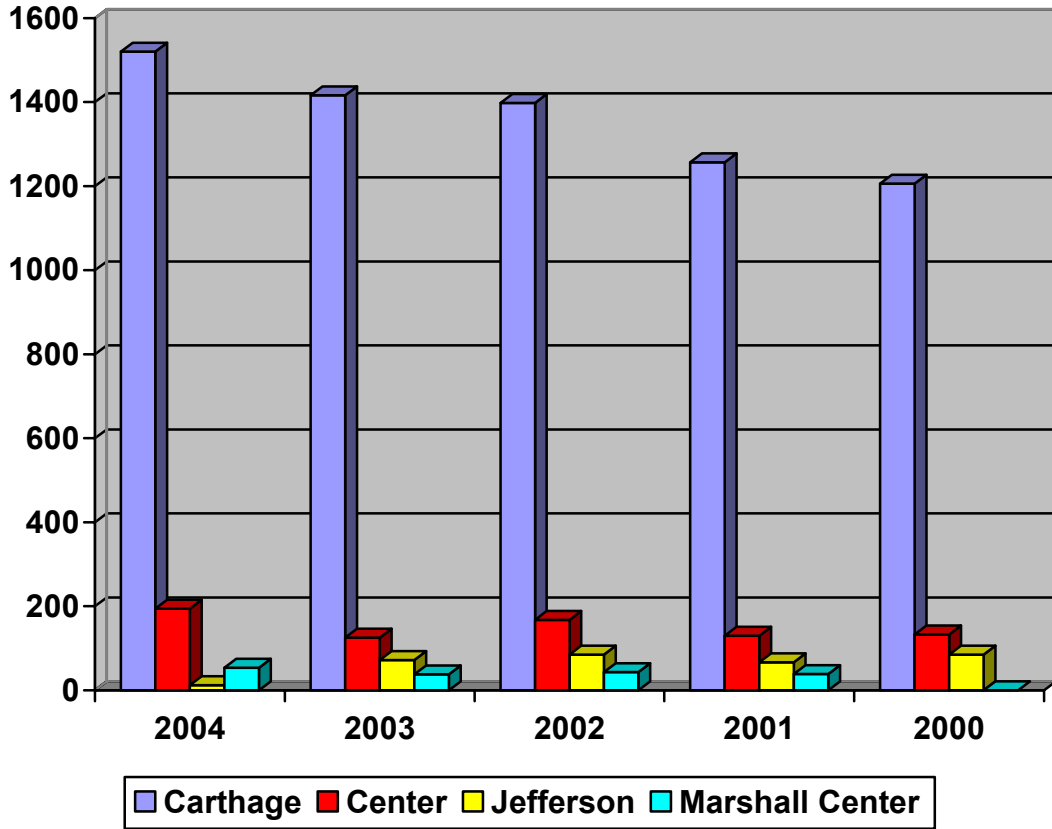
Ethnic Group	Male	Female	Total
White/Non-Hispanic	454	909	1363
Black/Non-Hispanic	97	230	327
Hispanic	22	44	66
Asian/Pacific Islander	3	1	4
American Indian	5	7	12
International	1	7	8
Total	582	1198	1780

Five Year Fall Enrollment By Level



Level	2004	2003	2002	2001	2000
Freshman	1313	1258	1308	1135	1098
Sophomore	356	349	264	278	238
Associates	37	35	54	45	31
Bachelors	42	15	34	27	44
Unclassified	32	25	34	8	13
Total	1780	1682	1694	1493	1424

**Five Year Trend of Fall Student Headcount
Breakdown By Campus**

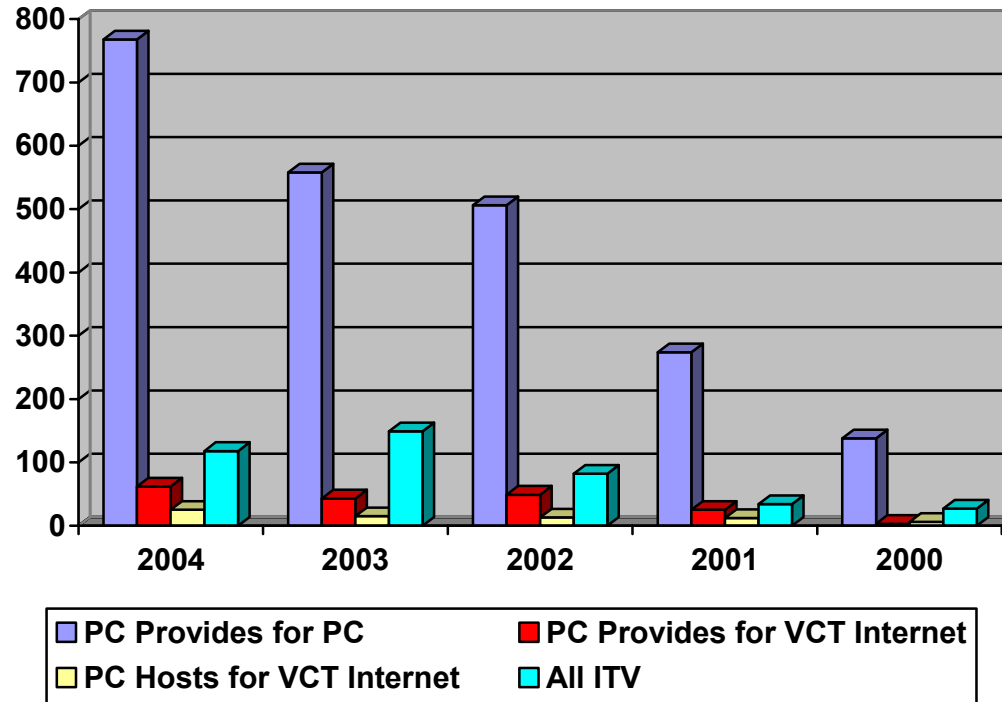


Campus	2004	2003	2002	2001	2000
Carthage	1520	1416*	1398*	1257*	1206
Center	194	156	168	130	133
Jefferson	12	72	85	67	85
Marshall Center	54	38	43	39	0
Total	1780	1682	1694	1493	1424

* Includes ITV classes broadcast from the Carthage campus to dual credit area high school students, PC classes taught on high school campuses, and PC classes taught at Barksdale AFB.

**Fall Distance Learning Duplicated Headcount
Breakdown By Mode of Delivery**

Duplicated Head Count



Mode of Delivery *	2004	2003	2002	2001	2000
Internet					
PC Provides for PC	768	558	506	274	138
PC Provides for VCT	62	43	49	25	3
PC Hosts for VCT	25	15	13	12	6
PC students receiving courses from other colleges per agreement	1				
Interactive Television					
PC Provides PC at Remote Sites	90	118	70	34	27
PC Provides for VCT	6	3	6	0	0
Angelina/Kilgore students receiving PC courses per agreement	6	5			
PC students receiving Angelina/Kilgore/TJC courses per agreement	12	13			
Community Service for University courses	4	10	6		
Total	974	765	650	345	174

* An explanation of modes of delivery is on the following page.

Definition of Distance Learning Modes of Delivery

Internet Courses

PC Provides for PC – Panola College students are enrolled in Internet courses offered by Panola College.

PC Provides for VCT – Students enrolled in other community colleges take Panola College Internet courses through the Virtual College of Texas (VCT). These students are not counted toward state funding, but Panola College receives a lease fee of \$195 for each student.

PC Hosts for VCT – Panola College students are enrolled in other community colleges' courses through the Virtual College of Texas. Panola College receives state funding for these students and pays lease fees to the providing colleges.

PC students receiving courses from other colleges – Panola College students are taking an Internet course from Tyler Junior College per agreement with no exchange of funds. These students are not being processed through the VCT.

Interactive Television (ITV) Courses

PC Provides for PC Students at Remote Sites – Panola College students are enrolled in ITV courses offered by Panola College. Only the students at remote sites are counted in this category. The students seated in the originating classroom with the instructor are not included in this count. Remote sites include Shelby College Center, Marshall Mall, and area high schools.

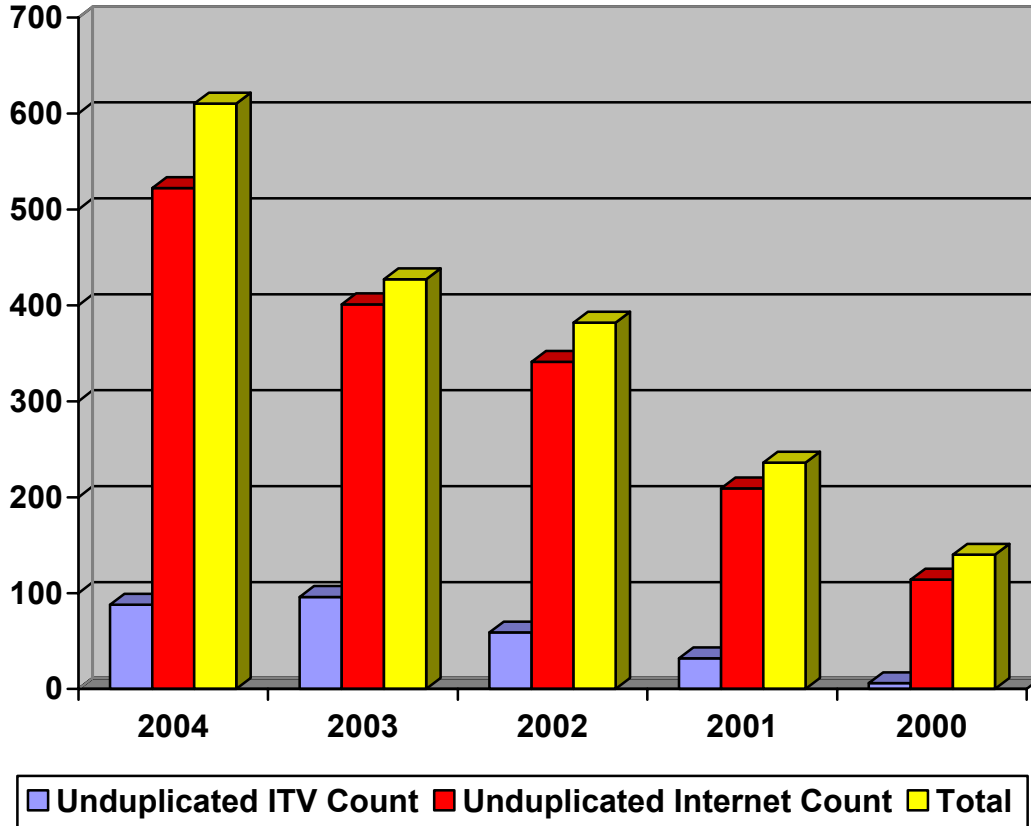
PC Provides for VCT – Students are enrolled in Panola College ITV courses through VCT. These students are not counted toward state funding, but Panola College receives a course lease fee of \$195 for each of these students.

Angelina/Kilgore Students Receiving PC Courses – A Panola-Angelina-Kilgore agreement allows these three institutions to mutually share courses via ITV using the NorthEast Texas Network (NETnet) system with no exchange of funds. These students are not processed through the VCT. These are Kilgore and/or Angelina students taught by Panola College instructors.

PC Students Receiving Angelina/Kilgore/TJC Courses – A Panola-Angelina-Kilgore agreement and a Panola-Tyler Junior College agreement allow mutually shared courses via ITV using the NorthEast Texas Network (NETnet) system with no exchange of funds. These students are not processed through the VCT. These are Panola College students taught by Kilgore and/or Angelina and/or Tyler Junior College instructors.

Community Service for University Courses – Panola College receives upper level university courses via the NETnet system. There is no fee charged these students.

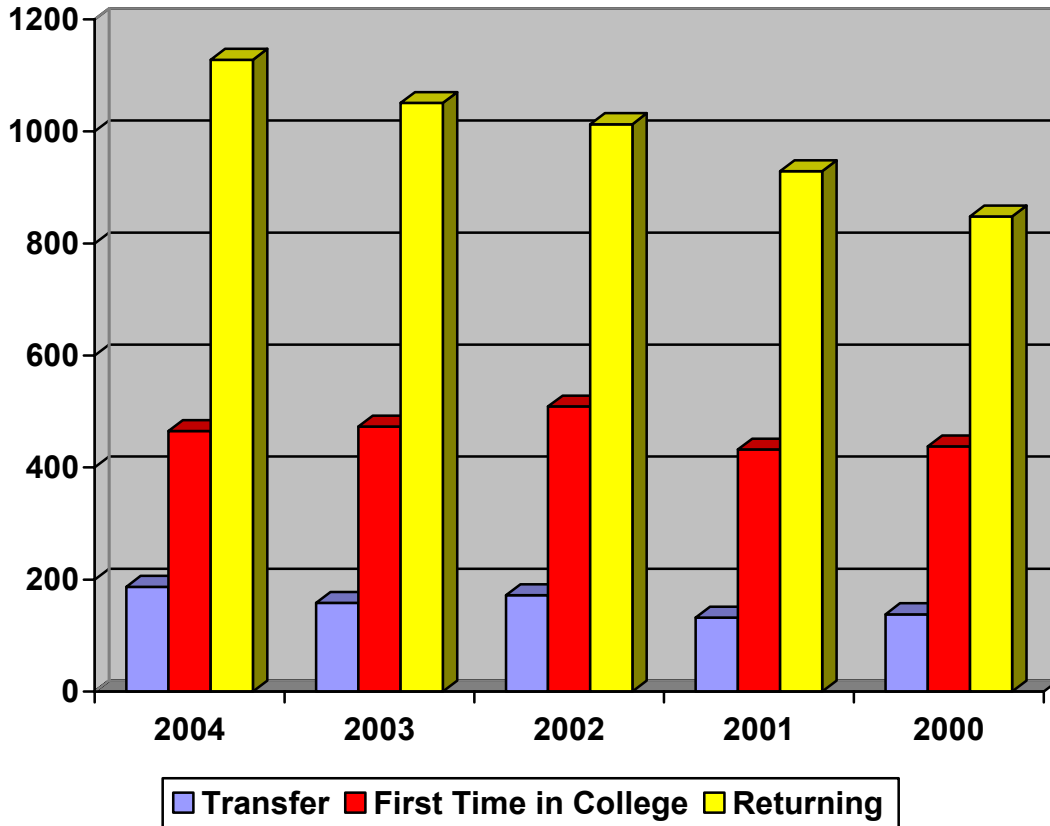
**Five Year Trend for Fall Distance Learning Enrollment
Unduplicated Head Count**



Headcount	2004	2003	2002	2001	2000
Unduplicated ITV Count	88	96	59	32	26
Unduplicated Internet Count	522	401	341	209	114
Unduplicated Total **	610	427	382	236	140

** Some students may be enrolled in both Internet and ITV classes and counted once for each of the individual categories. Therefore, a student who is counted in the unduplicated headcount for the Internet and for the ITV categories will only be counted once in the Total category, so the columns will not necessarily sum to the total.

**Five Year Trend
Fall Student Distribution**



Distribution	2004	2003	2002	2001	2000
Transfer	187	158	172	132	138
First Time in College**	465	473	509	432	438
Returning	1128	1051	1013	929	848
Total	1780	1682	1694	1493	1424

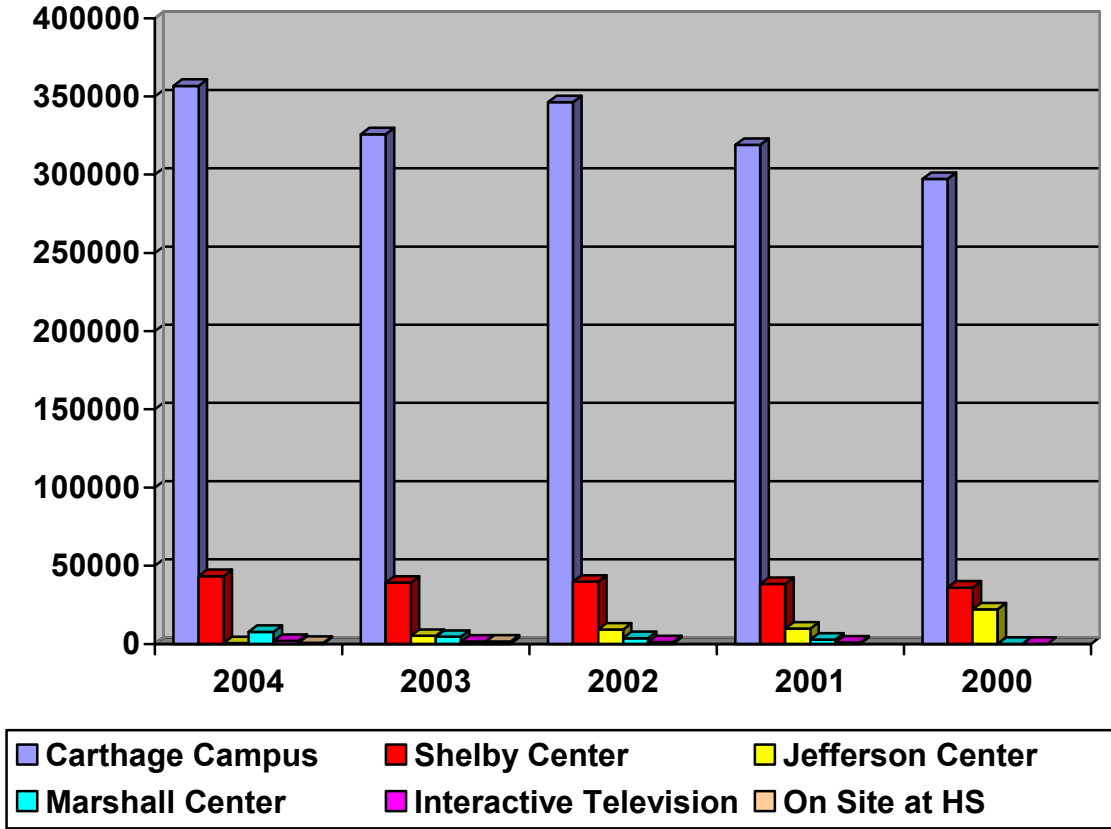
** First Time in College Fall 2003	Number
May 2004 Graduates	249
Previous High School Graduates	63
Individual Applications	2
GED Entrants	36
Early Admission & HS Articulation	110
Total	460

**Fall Contact Hours By Program Area:
Academic and Career / Technical**

Academic	2004	2003	2002	2001	2000
Agriculture	2400				
Biology	43,584	39,744	37,056	31,200	28,992
Business Mgmt, Mrkting	4,848	5,328	3,744	5,616	4,848
Business Computer App	2,304				
Communications	1,824	0	2,544	2,064	2,784
Computer Information	11,184	13,872	15,072	10,512	12,912
Consumer Home EC (Nutrition)	4,032	2,736	3,120	1,584	48
Foreign Language	2,016	2,944	3,936	2,176	2,096
Health	2,928	1,152	1,632	1,920	960
Law, Public Administration	1,392				
Letters	49,120	47,856	52,112	45,584	44,400
Mathematics	30,432	31,312	37,440	33,744	31,152
Physical Education and Fitness	23,760	19,200	18,960	18,816	18,816
Physical Science	11,456	11,536	11,312	11,568	7,680
Psychology	11,328	14,592	10,944	12,384	11,040
Social Science	39,168	36,768	42,528	39,552	40,224
Visual and Performing Arts	30,416	26960	29,168	25,360	23,968
Total Academic CH	272,192	254,000	269,568	242,080	229,920

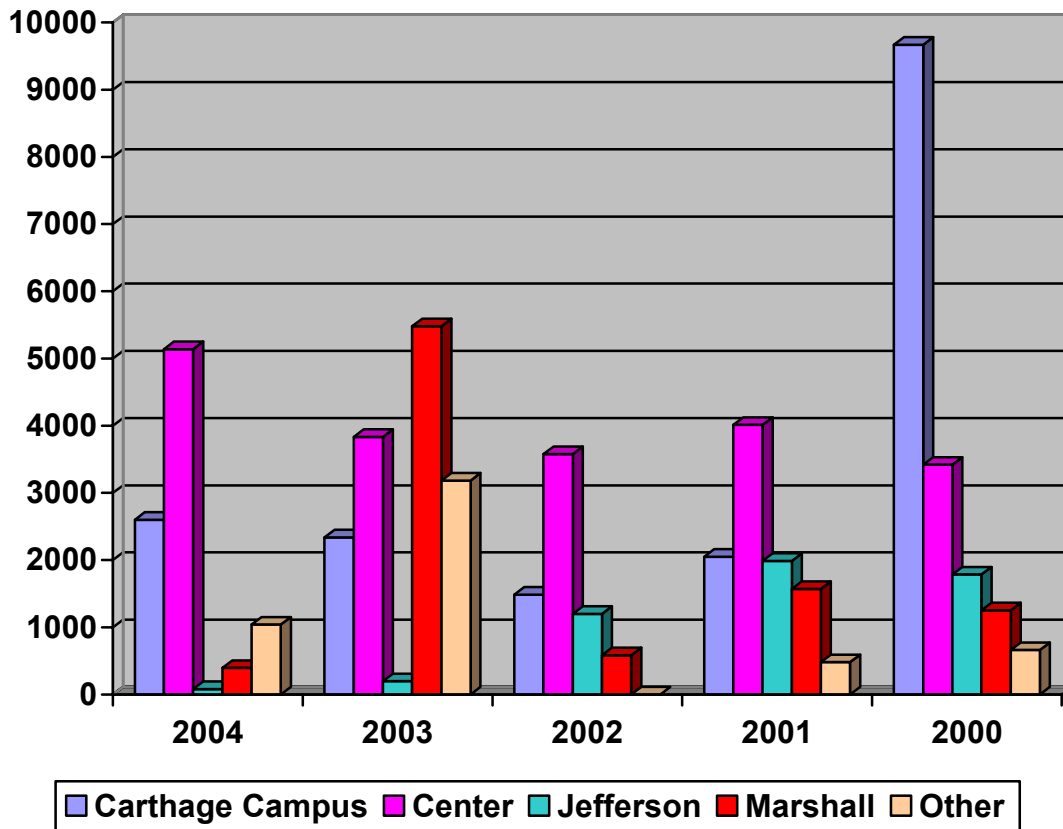
Career / Technical	2004	2003	2002	2001	2000
Business Mgmt, Admin (CIS)	480				
Business Mgmt, Admin (OST)	10,224	9,024	12,608	6,912	15,024
Computer Teacher Ed	1,408				
Computer Information Systems	3,648	3,344	4,528	11,616	8,880
Cosmetology (Cons & HEC)	28,256	24,448	17,952	27,328	20,960
Environmental Technology	432				
Foreign Language	1,568				
Forest Technology	0	3,168	9,920	14,224	7,968
Health Information Technology	10,496	8,400	7,280	4,976	3,584
Hospitality	0	0	2,192	2,816	704
Industrial Technology	1,664	2,320	3,648	0	0
Associate Degree Nursing	30,736	26,240	24,704	18,512	11,760
Vocational Nursing	33,104	32,496	31,968	28,272	40,448
Occupational Therapy	10,064	10,048	7,376	9,504	9,504
Welding	5,408	4,288	8,416	4,496	6,688
Total Career / Technical CH	137,488	123,776	130,592	128,656	125,520
Total Acad. & Career/Tech CH	409,680	377,776	400,160	370,736	355,440

**Fall Contact Hours By Campus:
Academic and Career / Technical**



Academic & Career / Technical	2004	2003	2002	2001	2000
Carthage Campus	356,816	325,824	346,368	318,960	297,280
SCC, SRTC, & Center HS	43,408	39,232	39,792	38,368	36,048
Jefferson Center & Jefferson HS	576	5,232	9,200	9,856	22,112
Marshall Center	7,728	4,512	3,648	2,688	0
Remote ITV to High Schools	1,930	1,536	1,152	864	0
On Site at High School (not ITV)	672	1,440			
Total Off-Campus	53,968	51,952	53,792	51,776	58,160
Total Semester Length CH	409,680	377,776	400,160	370,736	355,440

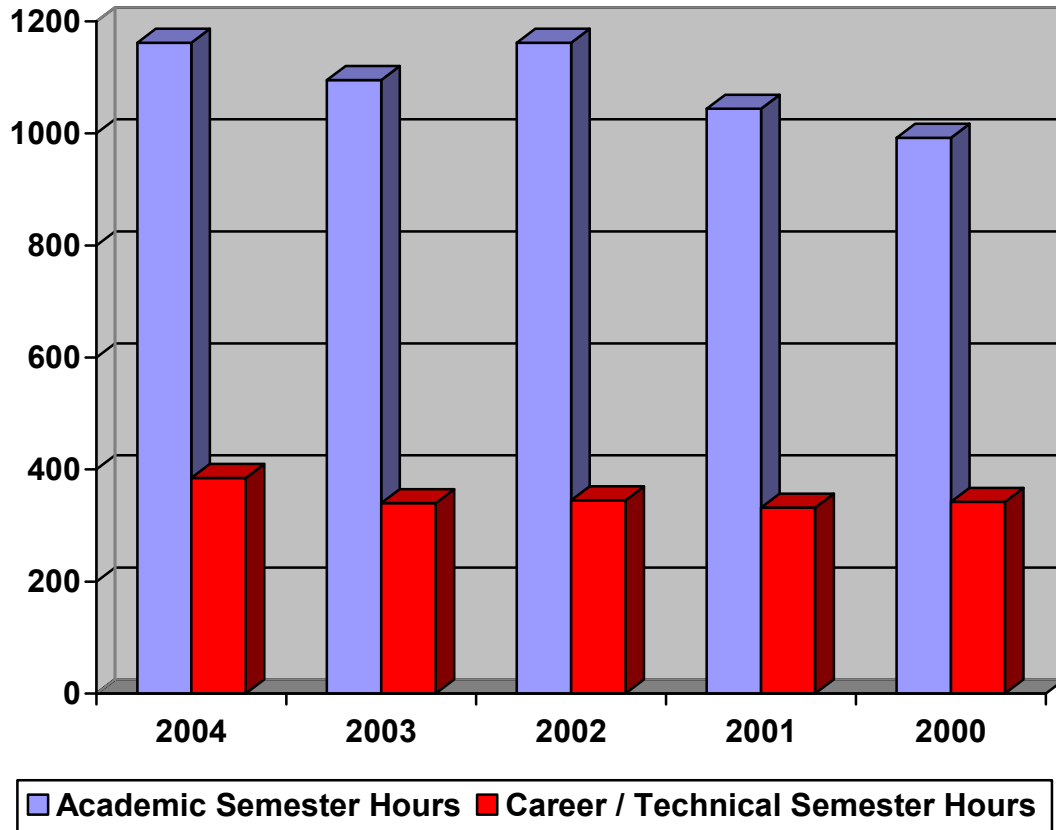
**Fall Contact Hours By Campus:
Continuing Education**



Continuing Education	2004	2003	2002	2001	2000
Carthage	2,600	2,338	1,485	2,048	9,669
Center	5,139	3,834	3,577	4,011	3,418
Jefferson	80	195	1,200	1,986	1,786
Marshall	3,894	5,480	582	1,568	1,251
Other	1,040	3,184	0	480	660
Total Continuing Education	12,753	15,031	6,844	10,093	16,784

Fall Contact Hour Summary	2004	2003	2002	2001	2000
Total Semester Length	409,680	377,776	400,160	370,736	355,440
Total Continuing Education	12,573	15,031	6,844	10,093	16,784
Total Funded	422,433	392,807	407,004	380,829	372,224

**Five Year Trend Fall Credit
Academic / Career and Technical Full-Time Equivalent (FTE)**



Full Time Equivalent	2004	2003	2002	2001	2000
Academic Semester Hours	1162	1095	1162	1044	992
Career / Technical Semester Hours	385	340	345	332	342
Total FTE	1547	1435	1507	1376	1334

Panola College: Programs Offered

Academic Degree Programs

Associate of Arts
Associate of Science

Technical Degree Programs

Associate of Applied Science - Computer Information Systems
Associate of Applied Science – General Business
Associate of Applied Science - Health Information Technology
Associate of Applied Science – Industrial Technology
Associate of Applied Science - Nursing Associate Degree (Leading to RN)
Associate of Applied Science - Occupational Therapy Assistant
Associate of Applied Science – Office Technology

Technical Certificate Programs

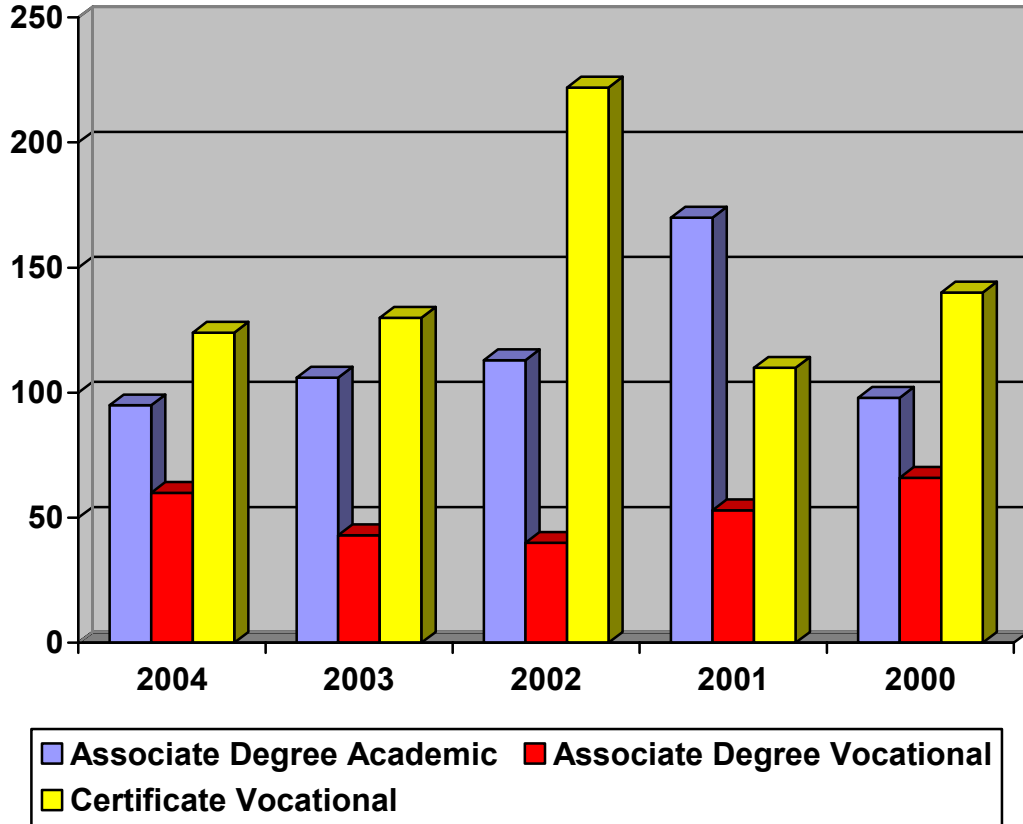
Cisco Academy/Networking
Cosmetology Facial/Esthetic Technology
Cosmetology Instructor Training
Cosmetology Nail Technology
Cosmetology Operator
Electrical Specialist
Environmental Technology
General Business
Industrial Technology Specialist
Industrial Technology Support
Mechanical Specialist
Medical Administrative Assistant/Secretary
Medical Coding Technician
Microcomputer Software Operator
Microcomputer Support Specialist
Nursing (Vocational Program Leading to LVN)
Office Technology - Office Specialist
Office Systems Technology - Office Technician
Productivity Software Marketable Skills
Refrigeration Specialist
Welding
Welding Specialist

Fall 2004 Enrollment by Declared Major Field of Study

Curriculum	Total
A D Nursing	432
Agriculture, General	22
Architecture	7
Art, General	15
Biology, General	16
Business and Management	131
Chemistry, General	3
Cisco Academy / Networking	3
Computer Information Systems	26
Computer Science	16
Cosmetology	43
Criminology	21
Drama / Theater Arts	14
Education, General	122
Electrical Specialist	1
Engineering	20
English Language and Literature	8
Environmental Technology	3
Facial Specialist	14
Foreign Languages & Literatures	1
Forestry Science	7
General Business	3
General Studies	357
Geology	1
Health Information Technology	25
Health Professions / Related	22
Health / Medical Assistants	5
History, General	8
Home Economics, General	1
Industrial Technology	6
Industrial Technology Specialist	2

Curriculum	Total
Industrial Technology Support	5
Journalism / Communications	6
Liberal Arts / Sciences	5
Management Information Systems	1
Mathematics	2
Mechanical Specialist	1
Medical Administrative Assistant / Secretary	11
Medical Coding	17
Microcomputer Software	1
Microcomputer Support Specialist	3
Music, General	32
Nail Technician	1
Nursing (Transfer)	6
Occupational Therapy Assisting	86
Office Specialist	6
Office Systems Technology	14
Office Technician	4
Phys Ed - Teaching and Coach	30
Physics, General	0
Political Science and Govt., Gen.	2
Pre-Dentistry Studies	2
Pre-Law	16
Pre-Medicine Studies	22
Pre-Pharmacy Studies	12
Pre-Veterinary Studies	4
Psychology, General	32
Social Work	4
Sociology	6
Speech and Rhetorical Studies	5
Vocational Nursing	76
Welding	13
Totals:	1780

**Five Year Trend
Total Number of Degrees and Certificates Awarded**

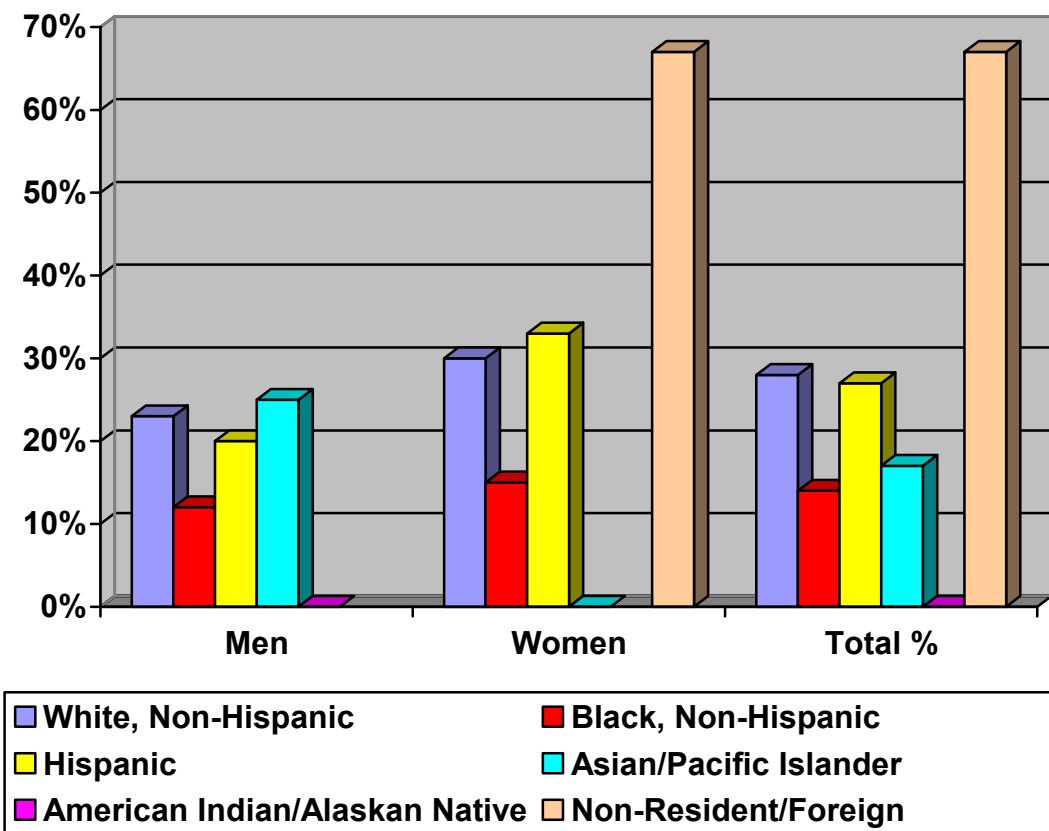


Degree/Certificate	2004	2003	2002	2001	2000
Associate Degree Academic	95	106	113	170	98
Associate Degree Vocational	60	43	40	53	66
Certificate Vocational	124	130	222	110	140
Total	279	279	375	333	304

**Percent of First Time, Full-time College Students Who Entered
Fall 2001 (Cohort Year 2001) and Completed* by Fall 2004**

Ethnic Group	Men	Women	Total %
	% Completing by 2004	% Completing by 2004	% Completing 2004
White, Non-Hispanic	23 %	30 %	28%
Black, Non-Hispanic	12 %	15 %	14%
Hispanic	20 %	33 %	27%
Asian/Pacific Islander	25 %	< 0.5 %	17 %
American Indian/Alaskan Native	< 0.5 %	NA	< 0.5 %
Non-Resident/Foreign	NA	67 %	67 %
Total % Completing by 2004	20 %	27 %	24 %

Percentage of the Fall 2001 Cohort Who Completed by Fall 2004

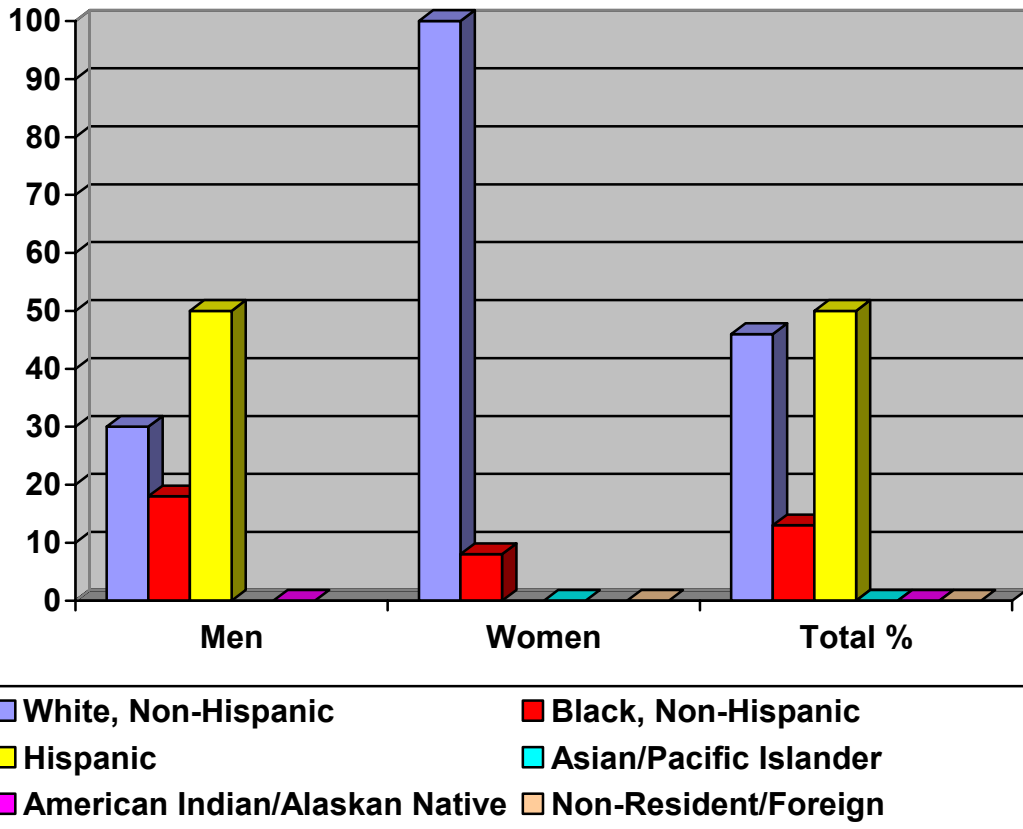


* Completers include students who earn a one or two year certificate, students who complete the core curriculum, and students earning an Associate's degree.

**Percent of Student Athletes who Entered during the Fall of 2001
(Cohort Year 2001) and Completed by 2004**

Ethnic Group	Men	Women	Total %
	% Completing by 2004	% Completing by 2004	% Completing by 2004
White, Non-Hispanic	30 %	100 %	46%
Black, Non-Hispanic	18 %	8 %	13%
Hispanic	50 %	NA	50 %
Asian/Pacific Islander	NA	< 0.5 %	< 0.5%
American Indian/Alaskan Native	< 0.5 %	NA	< 0.5 %
Non-Resident/Foreign	NA	< 0.5 %	< 0.5 %
Total % Completing by 2004	25 %	24 %	24%

**Percentage of the Fall 2001 Athletic Sub-cohort
Who Completed by Fall 2004**



* Completers include students who earn a one or two year certificate, students who complete the core curriculum, and students completing an Associate's degree.

**Percent of Student Athletes By Sports Category
(2001 Sub-cohort) Who Completed By 2004**

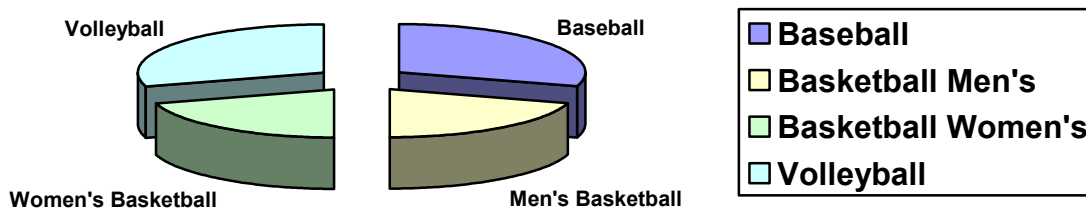
Ethnic Group	Baseball	Volleyball
	Men	Women
	% Completing by 2004	% Completing by 2004
White, Non-Hispanic	30 %	100 %
Black, Non-Hispanic	< 0.05 %	< 0.05 %
Hispanic	50 %	NA
Asian/Pacific Islander	NA	< 0.05 %
American Indian/Alaskan	< 0.05 %	NA
Non-Resident/Foreign	NA	< 0.05 %
Total % Completing by 2004	29 %	29 %

Basketball:

Ethnic Group	Men	Women
	% Completing by 2004	% Completing by 2004
White, Non-Hispanic	NA	100 %
Black, Non-Hispanic	20 %	11 %
Hispanic	NA	NA
Asian/Pacific Islander	NA	NA
American Indian/Alaskan	NA	NA
Non-Resident/Foreign	NA	NA
Total % Completing by 2004	20 %	20 %

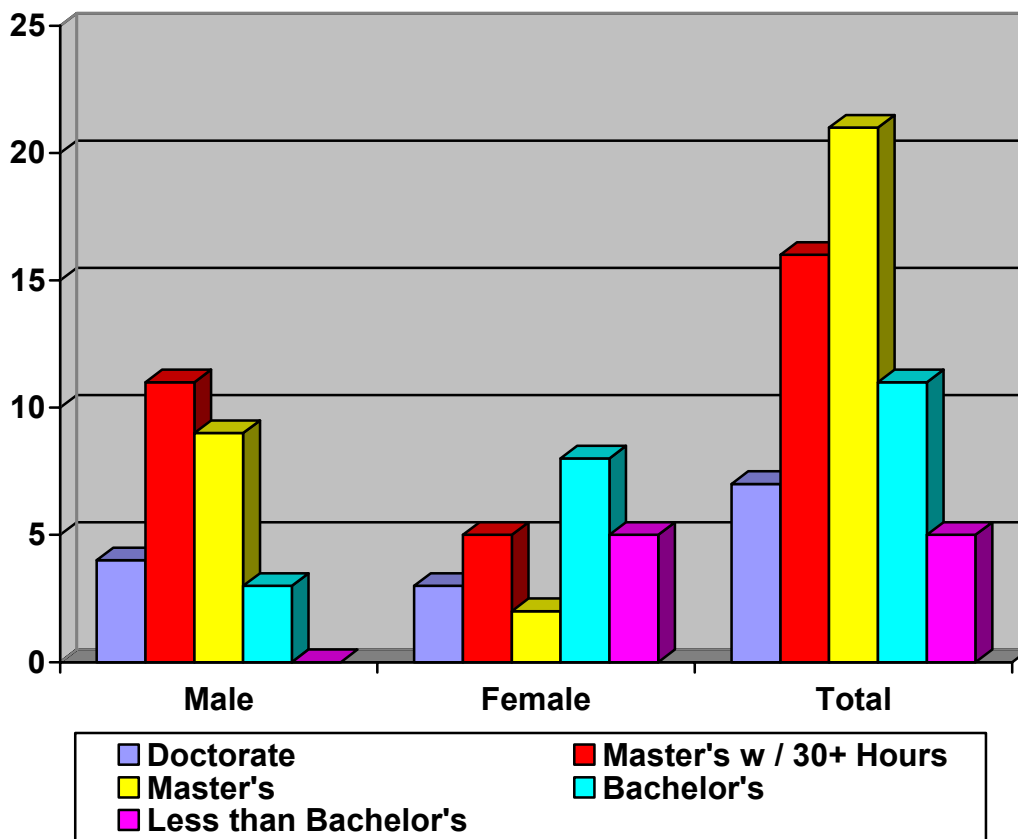
Total % of All Sports Completing by 2004	24 %
---	-------------

**Percent of Completing Athletes (Year 2001 Cohort)
From Each Sports Category**



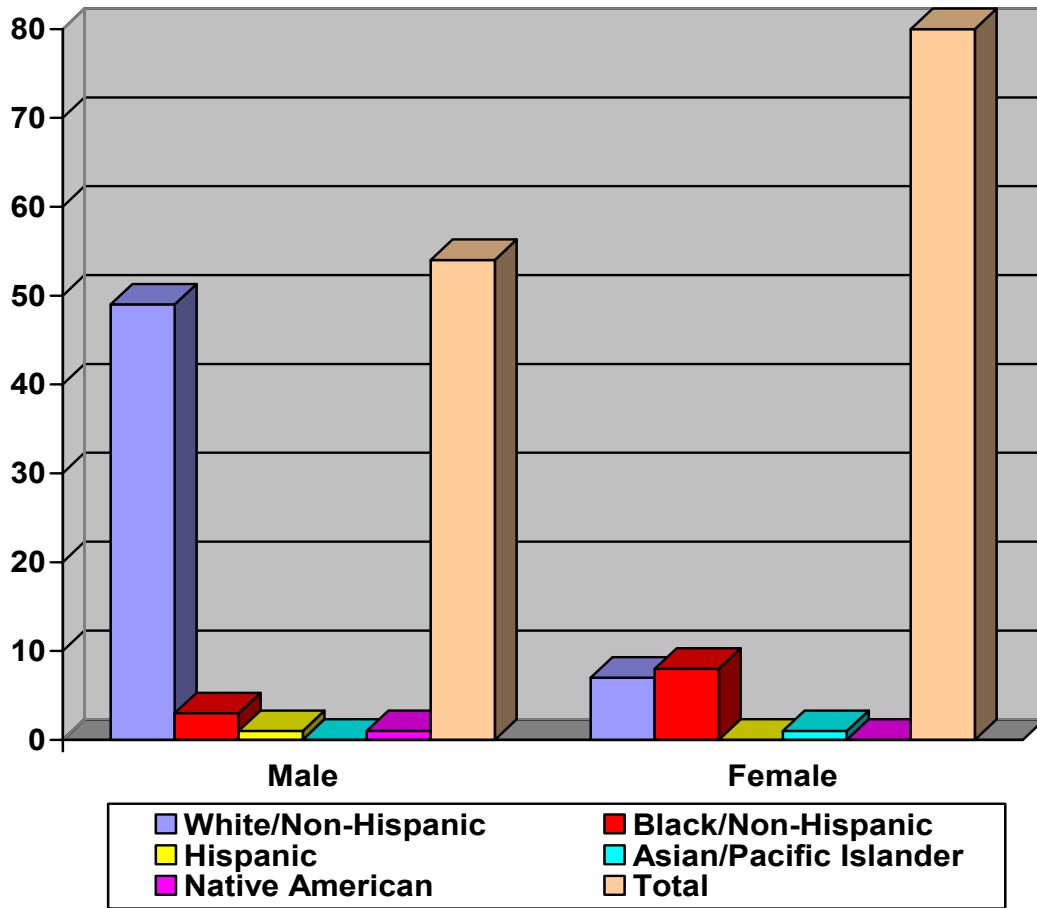
Sport	% of Completing Athletes From Each Sport Category
Baseball	29 %
Men's Basketball	20 %
Women's Basketball	20 %
Volleyball	29 %

Number of Full-time Faculty By Degree and Gender (Fall 2004)



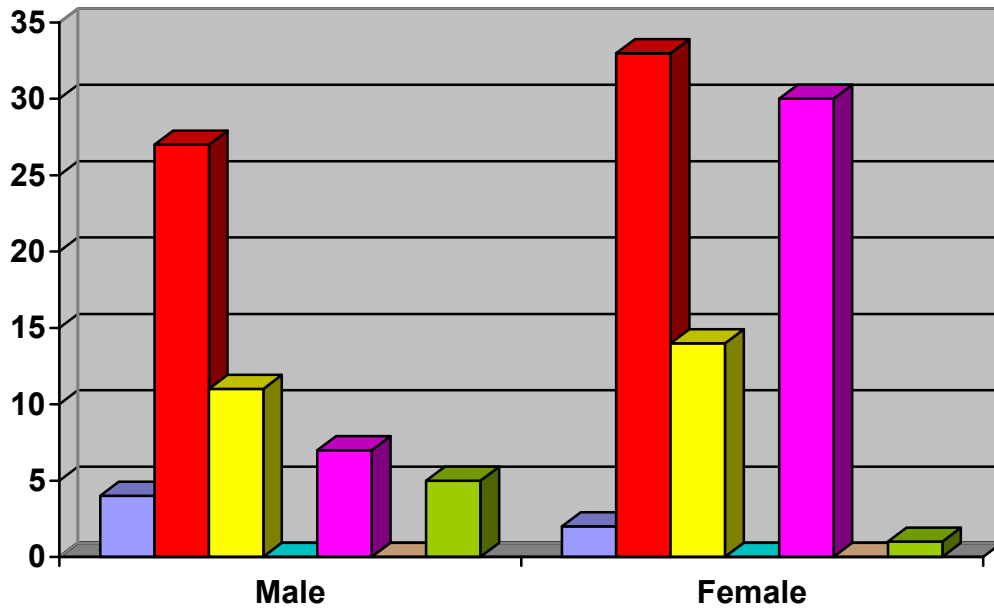
Degree	Male	Female	Total
Doctorate	4	3	7
Master's w / 30+ Hours	11	5	16
Master's	9	12	21
Bachelor's	3	8	11
Less than Bachelor's	0	5	5
Totals	27	33	60

Full-time Employees By Ethnicity and Gender (Fall 2004)



Ethnic Group	Male	Female	Total
White/Non-Hispanic	49	71	120
Black/Non-Hispanic	3	8	11
Hispanic	1	0	1
Asian	0	1	1
American Indian	1	0	1
Total	54	80	134

Full-time Employees By Activity and Gender (Fall 2004)



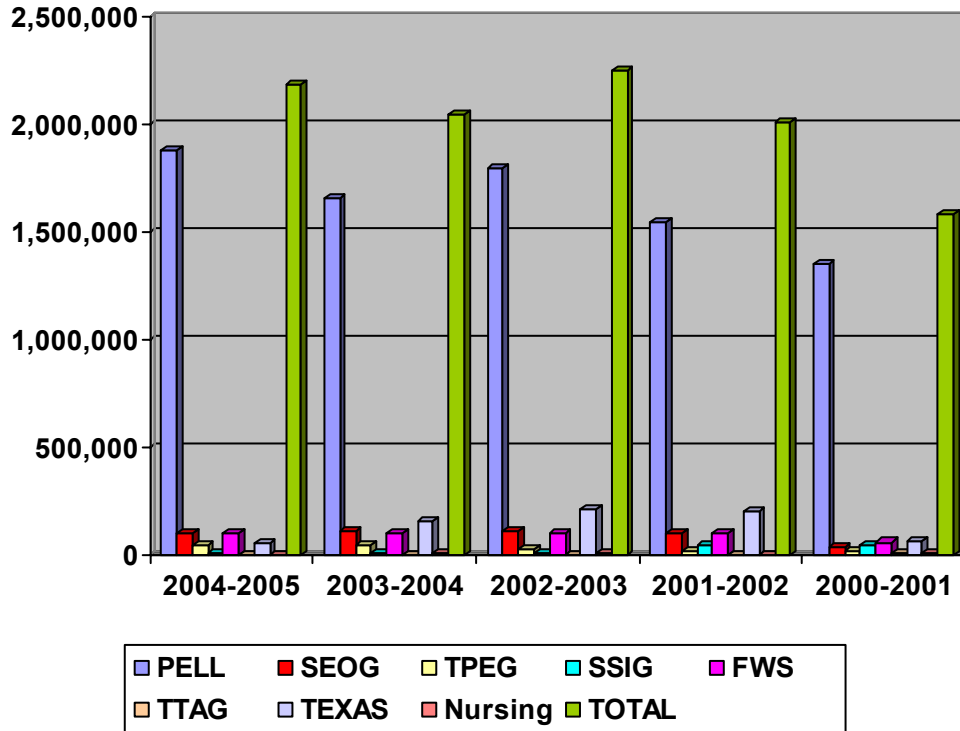
■ Executive/Administration	■ Instructional/Research
■ Other Professionals	■ Technical and Paraprofessionals
■ Clerical and Secretarial	■ Skilled Crafts
■ Service Maintenance	

Activity	Male	Female	Total
Executive/Administration	4	2	6
Instructional/Research	27	33	60
Other Professionals	11	14	25
Technical and Paraprofessionals	0	0	0
Clerical and Secretarial	7	30	37
Skilled Crafts	0	0	0
Service Maintenance	5	1	6
Total	54	80	134

Revenues, Expenses, and Changes in Net Assets
September 1, 2003 – August 31, 2004

Operating Revenues	2003-2004	Prior Year
State Appropriations - General Revenue	4,250,209	4,583,327
Tuition and Fees	1,476,788	1,238,410
Federal Grants and Contracts	2,623,949	2,955,807
State Grants and Contracts	393,018	413,091
Non-Government Grants and Contracts	20,064	85,562
Sales & Service of Educational Activities	196,103	187,020
Auxiliary Enterprises	850,084	1,141,084
Other Operating Revenues	309,015	330,679
Total Operating Revenues	10,119,230	10,934,980
Operating Expenses		
Instruction	5,164,783	5,408,490
Public Service	316,880	430,877
Academic Support	1,383,067	1,196,312
Student Services	860,661	895,266
Institutional Support	1,490,078	1,419,525
Operation and Maintenance of Plant	1,094,641	1,274,994
Scholarships and Fellowships	881,676	1,503,426
Auxiliary Enterprises	1,343,623	1,298,156
Depreciations	545,641	531,011
Total Operating Expenses	13,081,050	13,958,057
Operating Income Loss	-2,961,820	- 3,023,077
Non-Operating Revenues:		
Ad-Valorem Taxes for Current Operation	3,063,426	2,951,066
Gifts	104,373	109,068
Investment Income	270,168	333,861
Royalty Income	45,098	
Interest on Capital Related Debt	-88,478	- 102,924
Net Non-Operating Revenues	3,394,587	3,291,071
Net Assets		
Net Assets – Beginning of Year	11,034,975	10,766,981
Net Assets – End of Year	11,467,742	11,034,975
Increase in Net Assets	432,767	267,994

**Five Year Trend
Need-Based Aid Received by Students**



Program	2004-2005	2003-2004	2002-2003	2001-2002	2000-2001
PELL	1,885,000	1,655,445	1,801,310	1,544,806	1,348,935
SEOG	100,000	112,146	105,756	100,000	31,485
TPEG	46,000	45,000	29,000	17,000	15,198
SSIG	6,711	6,234	7,388	47,158	44,492
FWS	100,000	100,000	100,000	100,000	58,000
TTAG	0	0	0	0	6,120
TEXAS	51,130	151,397	207,360	203,700	66,401
Nursing	1,599	5,000	5,500	2,250	9,500
TOTAL	2,190,440	2,046,388	2,256,314	2,014,914	1,580,131

Grants:

PELL

SEOG Supplemental Educational Opportunity Grant

SSIG State Student Incentive Grant

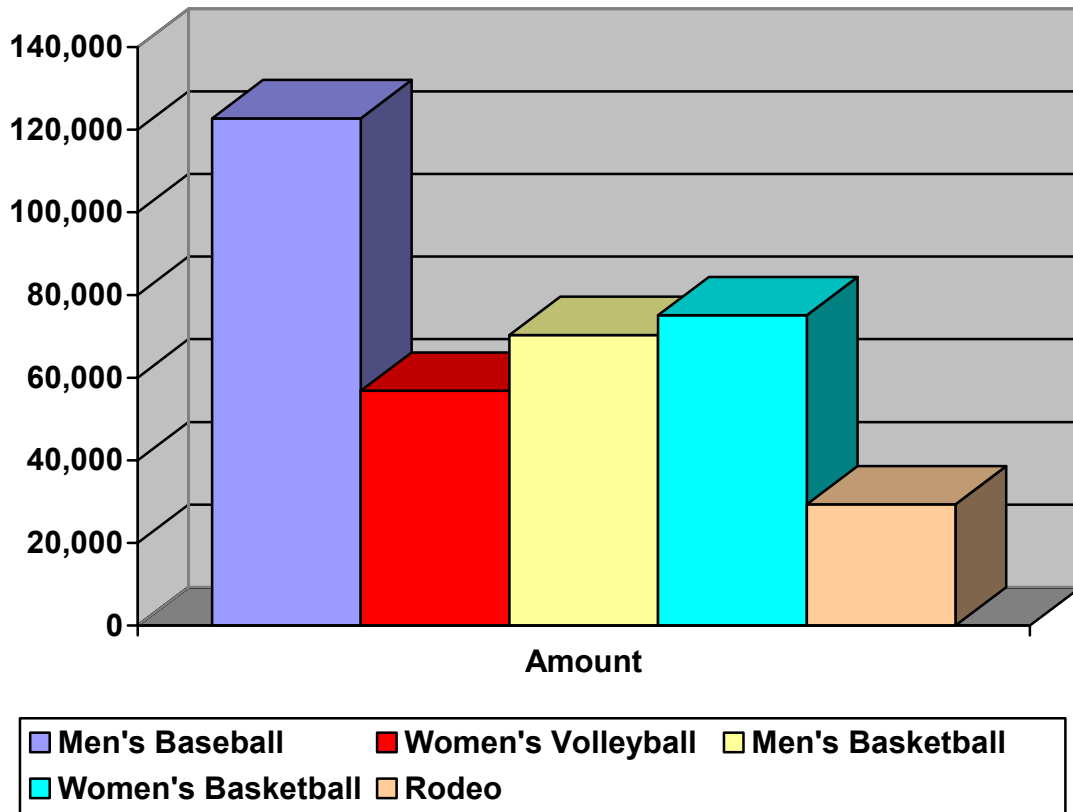
TEXAS Toward Excellence, Access, and Success Grant

TTAG Texas Tuition Assistance Grant

Work Study:

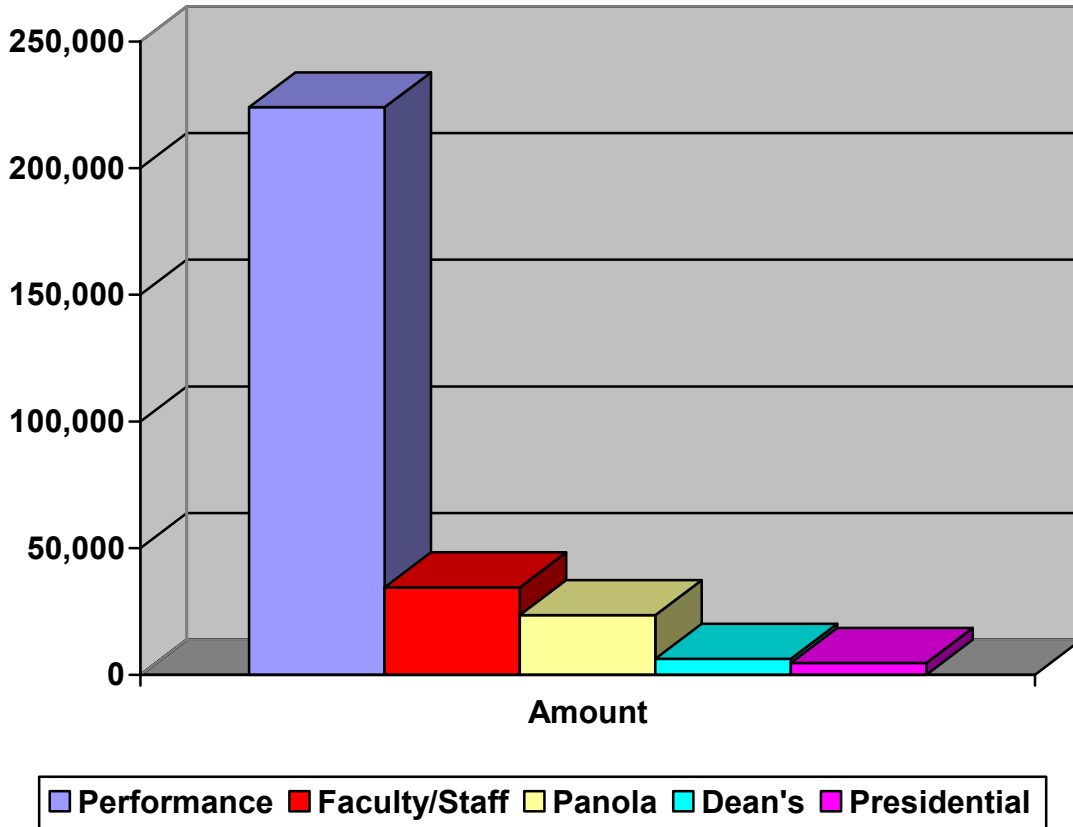
FWS Federal Work Study

Athletic Scholarships (2004 - 2005)



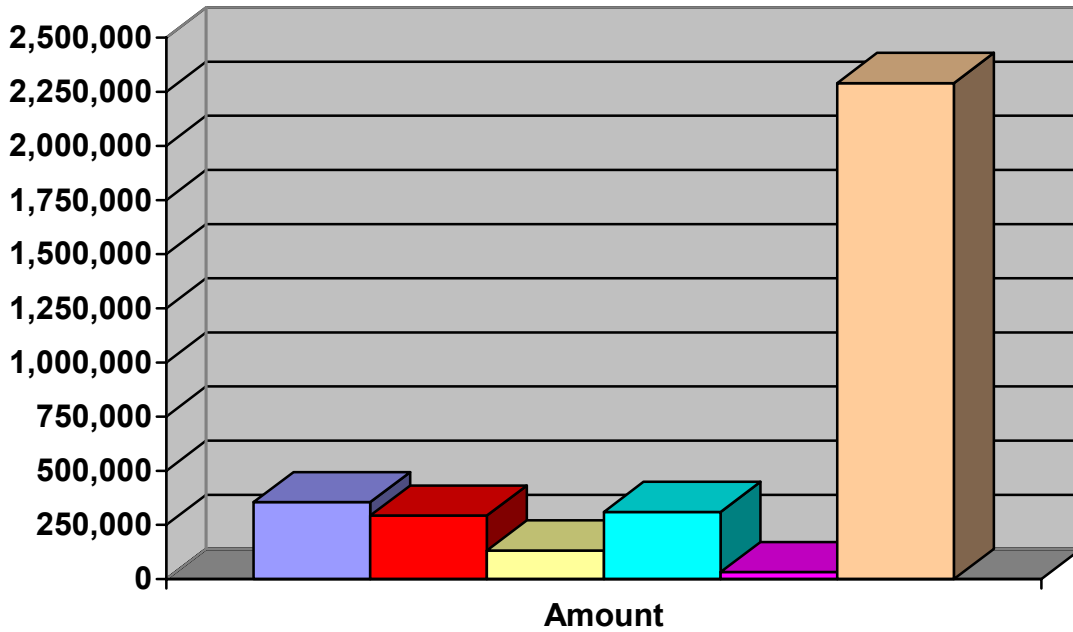
Program	Amount
Men's Baseball	122,752
Women's Volleyball	56,796
Men's Basketball	70,328
Women's Basketball	75,103
Rodeo	29,338
TOTAL	\$ 354,317

Academic/Performance Scholarships (2004 - 2005)



Program	Amount
Performance:	
Art	3,047
Band	80,589
Choir	71,400
Drama	47,848
Journalism	6,530
Speech	14,574
Faculty/Staff	34,483
Panola	23,534
Dean's	6,308
Presidential	4,699
TOTAL	\$ 293,012

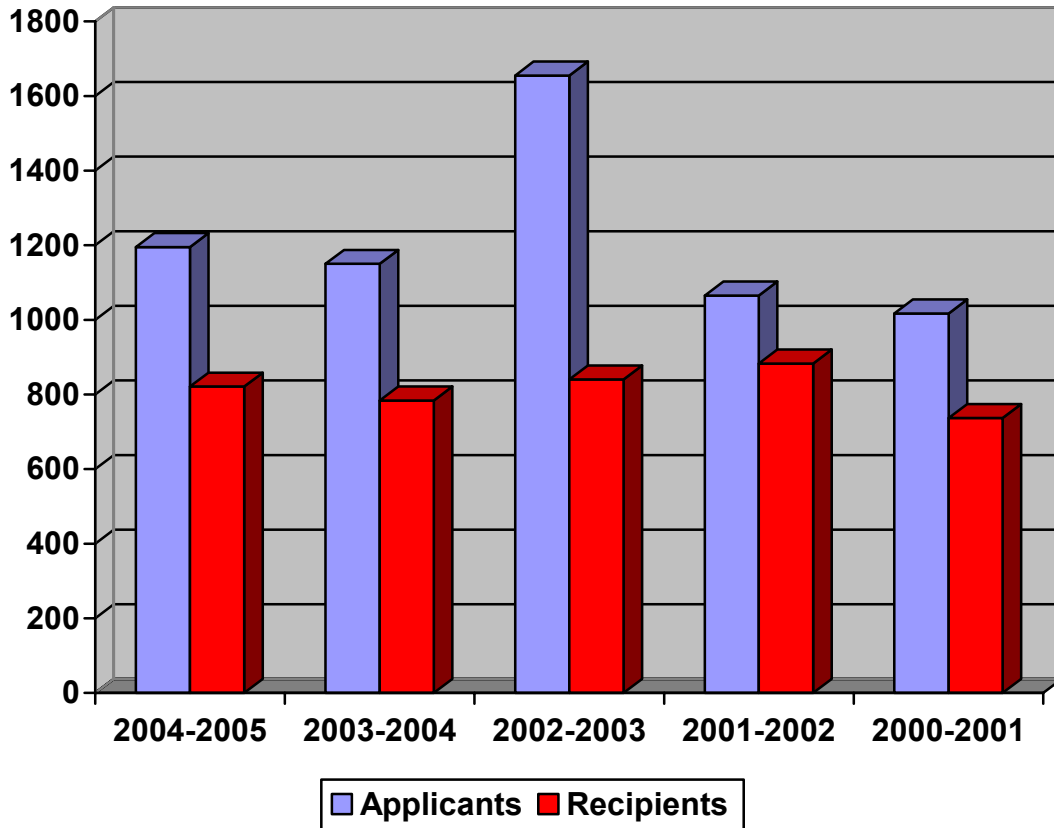
Summary of Financial Aid/Scholarships (2004 - 2005)



■ Athletic	■ Academic and Performance
■ Endowed Scholarships	■ Outside Aid
■ Exemptions	■ Need Based Aid

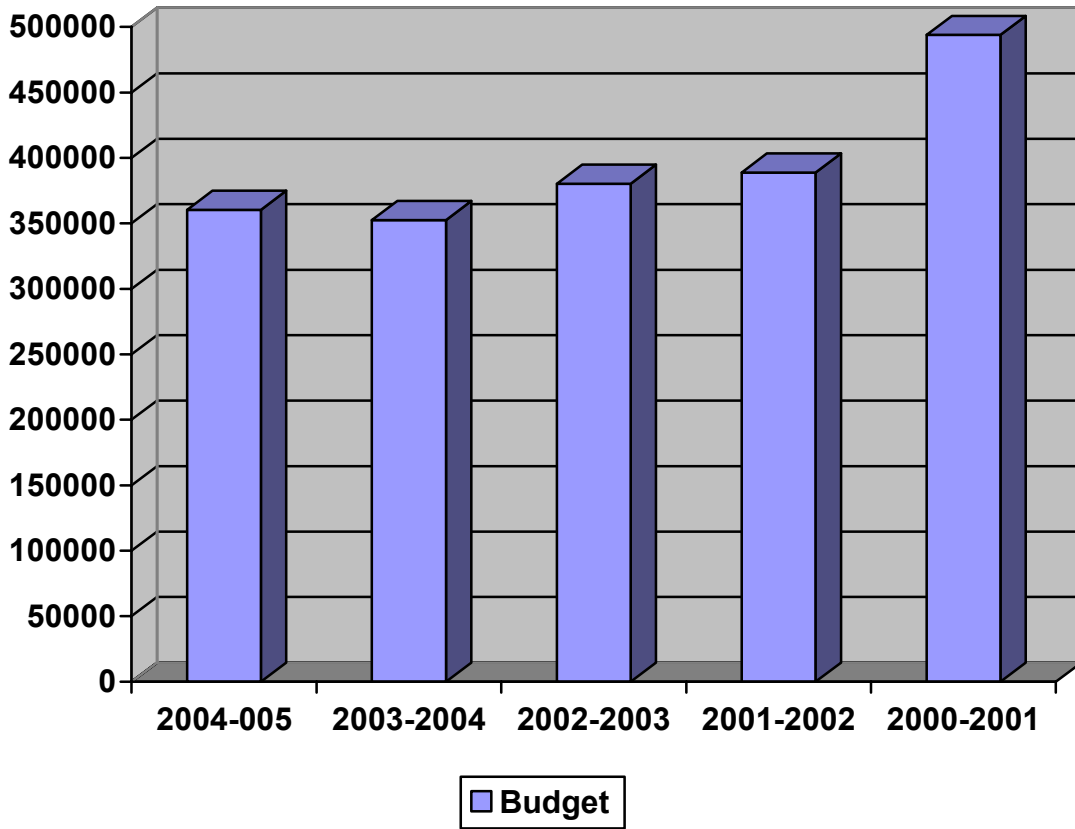
Program	Amount
Athletic	354,317
Academic and Performance	293,012
Endowed Scholarships	131,732
Outside Aid	309,655
Exemptions	32,401
Need Based Aid	2,290,440
TOTAL	\$ 3,411,557

**Five Year Trend
Number of Financial Aid Applicants and Recipients**



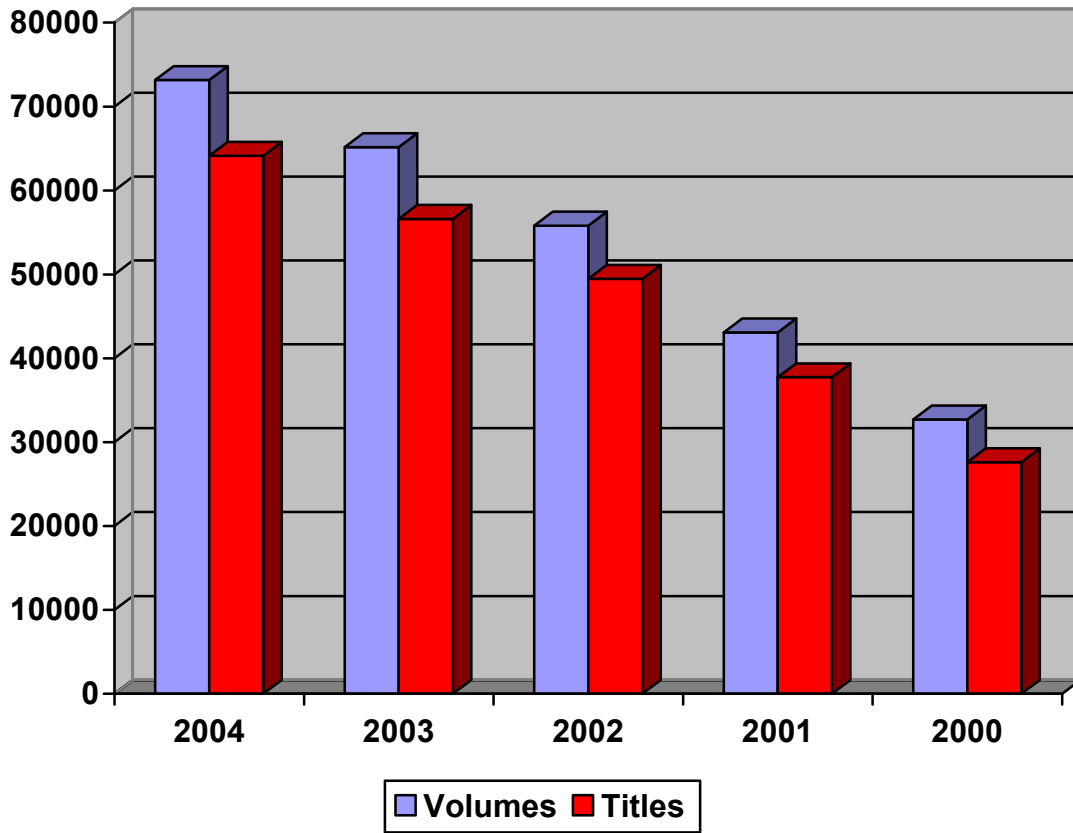
	2004-2005	2003-2004	2002-2003	2001-2002	2000-2001
Applicants	1195	1150	1655	1065	1017
Recipients	821	784	840	883	737
Percent	69%	68%	51%	83%	72%

Library Budget: 2000-2005



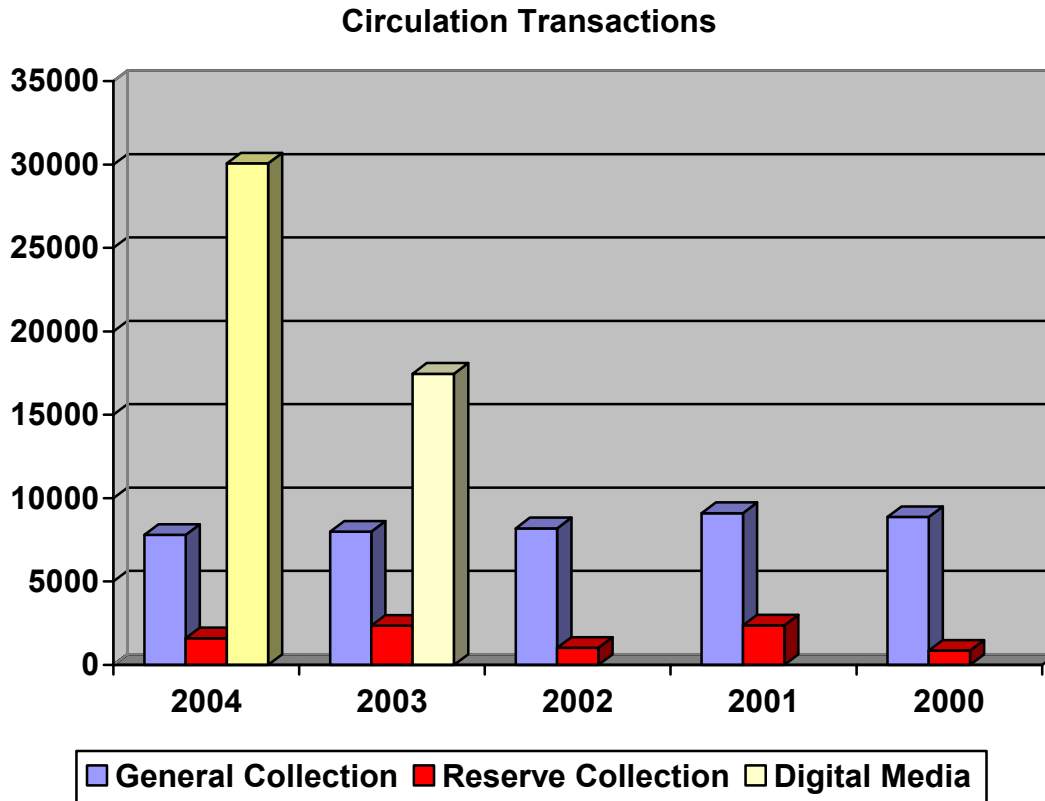
	2004-2005	2003-2004	2002-2003	2001-2002	2000-2001
Budget	\$360,274	\$352,485	\$380,296	\$388,811	\$493,878

Book Collection: 2000-2004



	2004	2003	2002	2001	2000
Volumes	73,161	65,151	55,822	43,090	32,721
Titles	64,121	56,616	49,467	37,741	27,617

Library Services: 2000 - 2004



Circulation Transactions	2004	2003	2002	2001	2000
General Collection	7,795	7,984	8,188	9,104	8,868
Reserve Collection	1,598	2,351	1,028	2,365	858
Digital Media	30,075	17,463			
Interlibrary Loans					
Lending	58	58	54	57	40
Borrowing	266	190	178	275	184
Information Services to Groups					
Presentations	64	55	24	50	110
People Served	1,097	1,101	679	1,022	1,500