

# PANOLA COLLEGE



*Photo by Kade Lindsay*

## FACT BOOK



© Kim Maxey

## 2019-2020

## Table of Contents

Introduction .....	5
About Panola College .....	6
Acknowledgments.....	6
Special Note: .....	7
Statement of Vision.....	8
Mission Statement .....	8
Strategic Planning Objectives 2019* Linked to Institutional Goals 2017 – 2022 .....	8
Panola College Board of Trustees .....	10
Organizational Charts.....	11
Administrative Offices.....	11
Academic and Career /Technical Schools.....	12
School of Professional/ Technical Programs .....	13
College Divisions .....	14
Student Services Department.....	15
Fiscal Services.....	16
County Information .....	17
Harrison County .....	17
Geography .....	17
Population Statistics .....	17
Marion County .....	19
Geography .....	19
Population Statistics .....	19
Panola County .....	21
Geography .....	21
Population Statistics .....	21
Shelby County .....	23
Geography .....	23
Population Statistics .....	23
Panola College District Demographics .....	25
Enrollment Data .....	27
Fall / Spring Enrollment Report .....	27
Credit Enrollment by Full-time / Part-time Status.....	28

Fall Enrollment by Tuition Status and Geographical Distribution .....	29
Credit Students by Ethnicity Fall Semesters Trend .....	30
Credit Students by Gender Fall Semesters Trend.....	31
Fall 2019 Credit Students Ethnic / Gender Breakdown.....	32
Fall Enrollment by Level .....	33
Fall Student Headcount Breakdown by Campus and County.....	34
Special Populations .....	35
Dual Credit/ Early Admissions.....	36
Fall 2019 Enrollment by High School .....	36
Dual Enrollment by County .....	37
Semester Credit Hours by County .....	37
Dual Credit Awards by Major (2019-2020).....	38
Dual Credit Awards by Type.....	38
Distance Learning.....	39
Fall Distance Learning Duplicated Headcount.....	39
Definition of Distance Learning Modes of Delivery.....	40
Fall Distance Learning Enrollment Unduplicated Head Count .....	41
Fall Student Distribution .....	42
Contact Hours .....	43
Fall Contact Hours by Program Area: Academic and Career / Technical .....	43
Spring Contact Hours by Program Area: Academic and Career / Technical .....	44
Fall Contact Hours by Campus: Academic and Career / Technical .....	45
Continuing Education: Fall Contact Hours by Campus .....	46
Fall Credit Academic / Career Technical Full-Time Equivalent.....	47
Program/ Completion Data.....	48
Panola College: Programs Offered 2019-2020 .....	48
Fall 2019 Enrollment by Declared Major Field of Study.....	49
Total Number of Degrees and Certificates Awarded .....	51
Percent of First-time in College, Full-time Students Who Entered in Fall 2016 (Cohort 2016) and Completed a Degree, a Certificate, or Transferred-out by Fall 2019.....	52
Faculty Data.....	53
Percent and Number of Full-time Faculty by Degree and Gender (Fall 2019).....	53
Full-time Employees by Ethnicity and Gender (Fall 2019) .....	54

Full-time Employees by Activity and Gender (Fall 2019) .....	55
Revenues, Expenses, and Changes in Net Assets September 1, 2018 – August 31, 2019 .....	56
Financial Aid .....	58
Need-Based Aid Received by Students p. 1 .....	58
Need-Based Aid Received by Students p. 2 .....	59
Athletic Scholarships 2019 – 2020.....	60
Academic/Performance Scholarships 2019 – 2020.....	61
Summary of Financial Aid/ Scholarships 2019 – 2020 .....	62
Number of Financial Aid Applicants and Recipients of Federal or State Aid .....	63
Library Services .....	64
Library Budget: 2015-2019 .....	64
Library Materials: 2015 – 2019.....	65
Library Services: 2015 – 2019 .....	66





# COVID-19 (Coronavirus) Notice

## March 18, 2020

Panola College to extend Spring Break and move to online instruction

NEWS: Due to COVID-19, all College classes move to online/remote learning after spring break.

# INTRODUCTION

*Photo by Kade Lindsay*



## About Panola College

Panola College is a comprehensive public community college serving the citizens of Harrison, Marion, Panola, and Shelby counties. Founded in 1947, Panola College has a rich tradition of helping students achieve their academic and personal goals.

Enrollment at the College has grown from fewer than 100 students at the first registration in January of 1948 to 2,872 (including continuing education) in the fall of 2019. The enrollment not including continuing education was 2,613 students. The College provides many services that enrich the lives of individuals in the region by offering a wide range of educational and training opportunities to citizens of all ages. Students can choose from a variety of technical programs that provide quick employment and career enhancement opportunities, or they can pursue a two-year associate degree and academic courses for transfer to a four-year university.

Panola College offers courses through its main campus in Carthage and at centers in Marshall and Center, Texas. Panola College is also a leader in distance education. In 2018, the College was listed in the “Top 10 Digital Community Colleges” in the small college category by the Center of Digital Education, an honor the College has received eleven times since 2003. The Digital Colleges Survey identifies and spotlights colleges that provide high-level technology, ranging from online registration, distance learning, advisory services, and technology training for students and faculty. Seven degrees and seven certificates are offered online through the Canvas Learning Management System.

Panola College provides numerous cultural events to the local community. Patrons of the arts can choose from a wide selection of plays, concerts, lectures, and art exhibits presented annually at the College. For those who prefer athletic competition, Panola College is home to the Panola Ponies and Fillies intercollegiate basketball, volleyball, baseball and rodeo teams.

An associate degree from Panola College is equivalent to the first two years of a four-year degree but at a fraction of the cost charged by state and private universities. Graduates transfer to a wide range of four-year institutions that include Texas A&M University, the University of Texas at Tyler, East Texas Baptist University, Stephen F. Austin State University, Louisiana State University and many others.

Each year from 2012 to 2019, Panola College was recognized as a “Great College to Work For” by The Chronicle of Higher Education. Panola College has made the Honor Roll every year. For 2019, Panola College was one of 25 two-year colleges recognized for specific best practices and policies and was one of only 42 Honor Roll small colleges in the United States (enrollment less than 2,999).

### **Acknowledgments**

This edition of the Panola College Fact Book reflects the diversity of the institution and provides a convenient and authoritative source of information about the college. The Offices of the President, the Vice President of Instruction, Fiscal Affairs, Financial Aid, the Registrar, the Director of Human Resources, the Director of Institutional Advancement, the Director of Distance and Digital Learning, and the Director of Library Services assisted in the compilation of the data in the book.

***Tryphena Walker, Director of Institutional Research and Planning***

**Special Note:**

A week after spring break in March, Panola College moved all face-to-face classes to remote learning due to the COVID-19 pandemic. Students received an additional week of spring break to allow faculty and staff to prepare for all online learning and working remotely.

Summer classes were taught online with the exception of a few where in-person meetings were necessary to complete required hands-on practice.

Panola College departments created contingency plans to deal with the current situation and possible future ones based on current information from local, state, and national authorities.

Safety and contingency plans are in place for the fall and spring semesters so that operations may continue safely face-to-face. Plans include more hybrid classes, smaller face-to-face classes, safe practices, etc.

## Statement of Vision

Panola College is committed to excellence in instructional programs, student services, service to community, and leadership in economic development and cultural enrichment in the region.

## Mission Statement

Panola College is dedicated to providing excellence in education. The range of educational offerings includes university transfer programs, technical and workforce programs, instruction designed to increase academic proficiencies, and continuing education to enrich lives and improve skills. Our aim is to engage students to achieve success.

## Strategic Planning Objectives 2019\*

Linked to Institutional Goals 2017 – 2022

- IG 1 To provide excellence in teaching, student engagement and adapt the curriculum to meet the needs of the community
- 1.1 Panola College Quality Enhancement Plan (student success points/measures).
  - 1.2 Co-Requisite Project.
  - 1.3 Texas Guided Pathways.
- IG 2 To maintain and refine support systems for enhancing college functions and student success.
- 2.1 Collection and use of data through 2020.
  - 2.2 Use of SENSE and CCSSE data.
  - 2.3 Maintain and/or improve licensure and certification pass rates and performance on national subject examinations.
- IG 3 To provide appropriate facilities and a quality and productive work, study, and learning environment aimed at engaging the college community.
- None
- IG 4 To maintain a strong commitment to excellence through professional development.
- None



- IG 5 To seek resources to support the college mission.
- 5.1 Supplement state funding, property tax funding, and tuition through state, federal, private and other revenues, grants, and gifts.
- IG 6 To distribute resources in a manner that is productive, efficient and consistent with the College's mission.
- None
- IG 7 To provide college systems and practices that ensure public accountability.
- 7.1 Monitor the composite financial index score and its corresponding ratios that are within our control.
- IG 8 To support the College's commitment to expand access, equity, diversity, and enrollment.
- 8.1 Increase overall headcount and full-time equivalent enrollment.
- 8.2 Dual enrollment initiatives.
- 8.3 Open Educational Resources.
- IG 9 To provide leadership in cultural and economic development in the College's service area.
- 9.1 Develop additional course, program and customized training offerings to respond to emerging markets and trends.
- IG 10 To seek out and cultivate beneficial partnerships.
- None

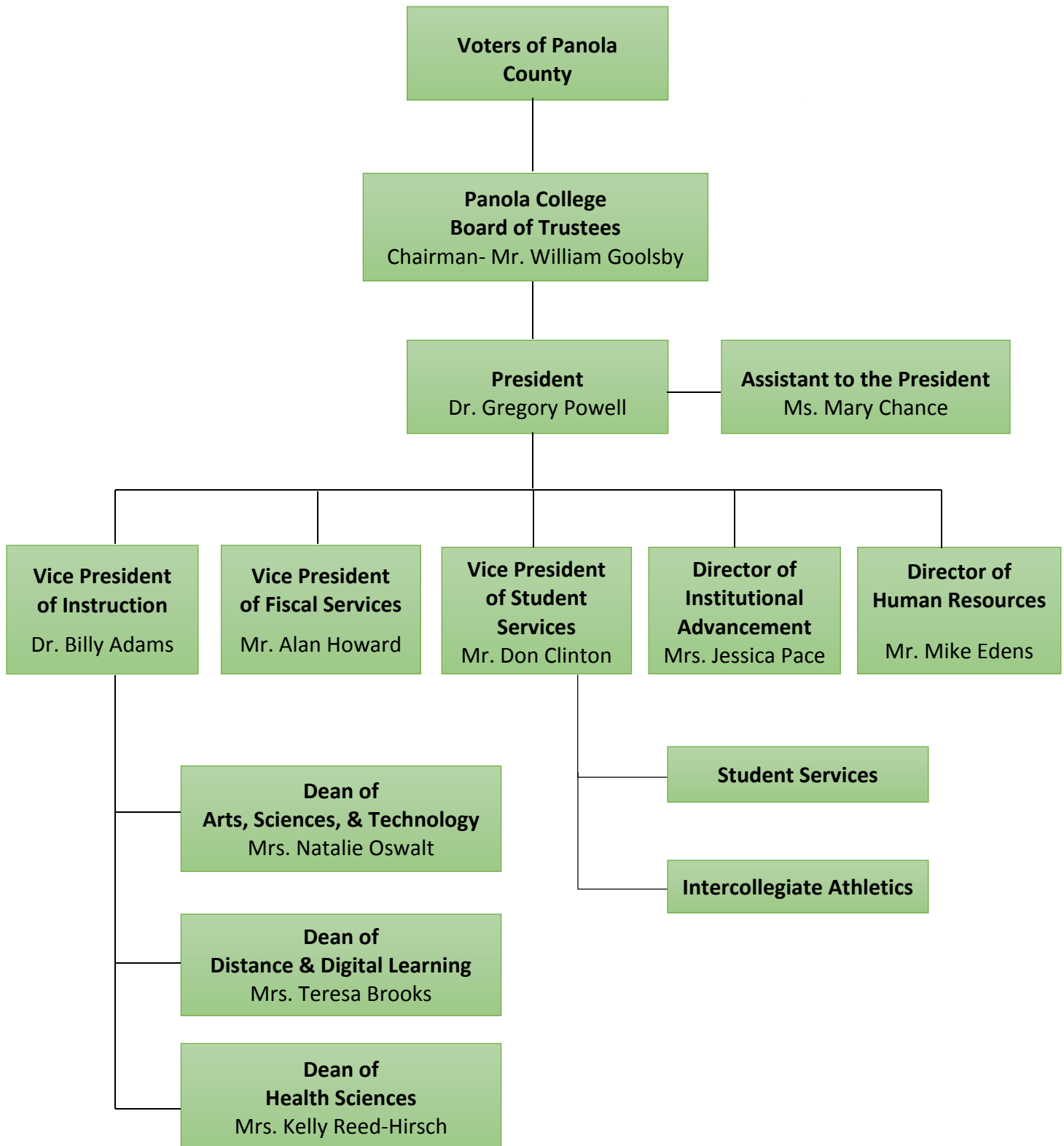
\*Work on the updated 2020 objectives list was paused due to COVID-19 but will resume in the fall.

# Panola College Board of Trustees

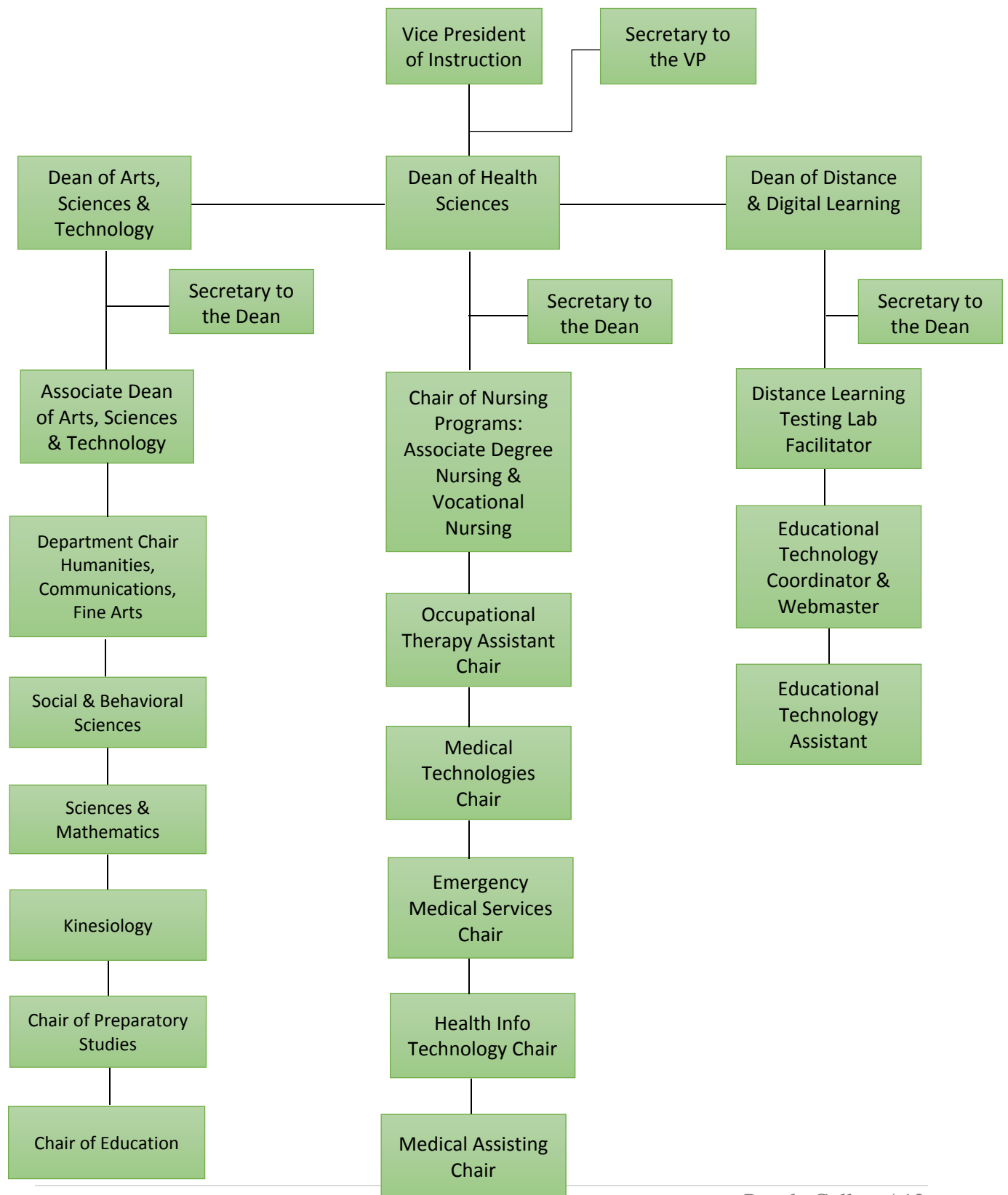


<b>Member</b>	<b>End of Term</b>
William Goolsby, Chair	2022
Hal Palmer, Vice Chair	2020
Richard Thomas, Secretary	2024
Bobby Phillips	2022
Kevin Smith	2022
Brooke Lipsey	2024
Fatha Burchette	2020

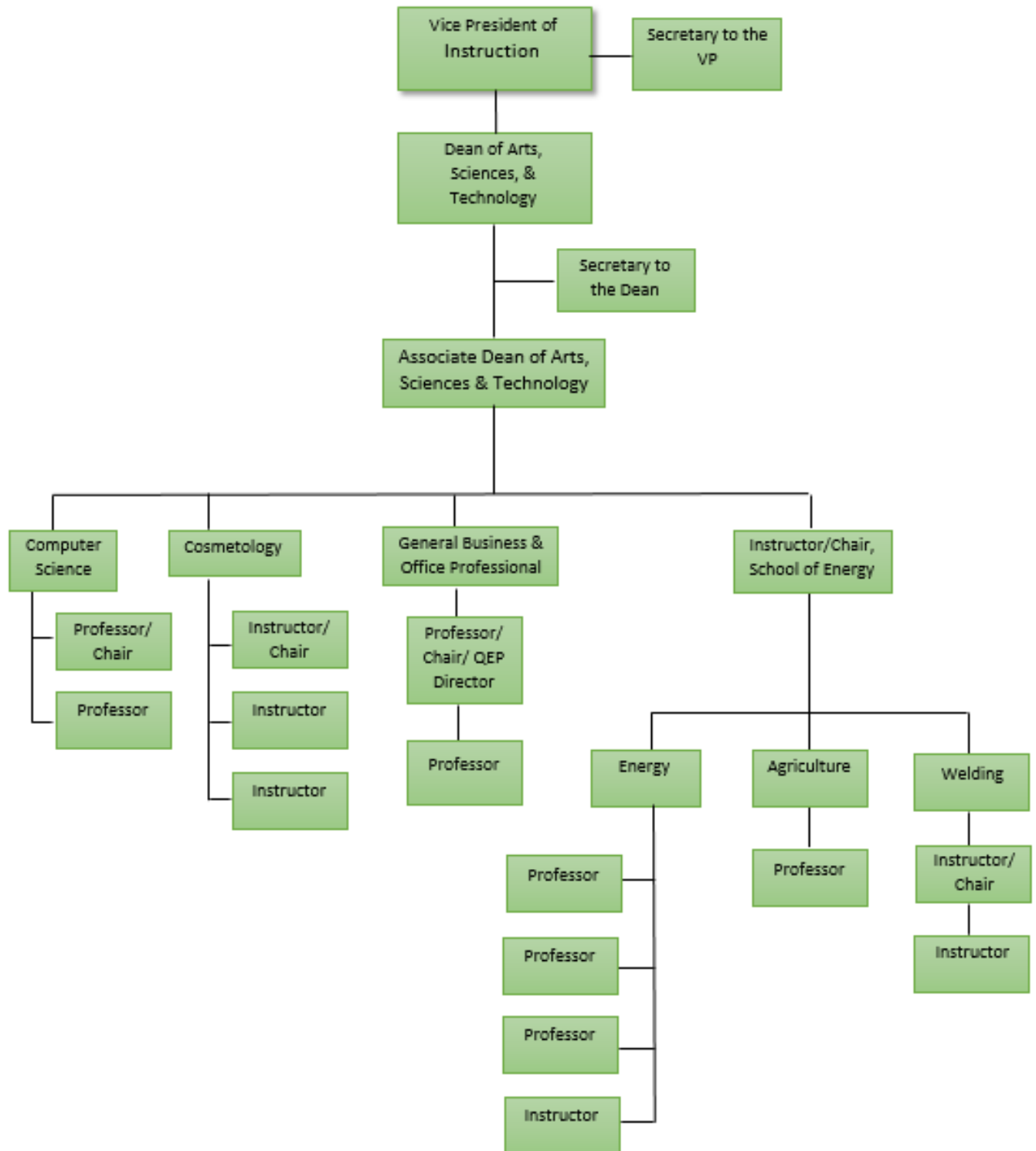
## Administrative Offices



## Academic and Career /Technical Schools

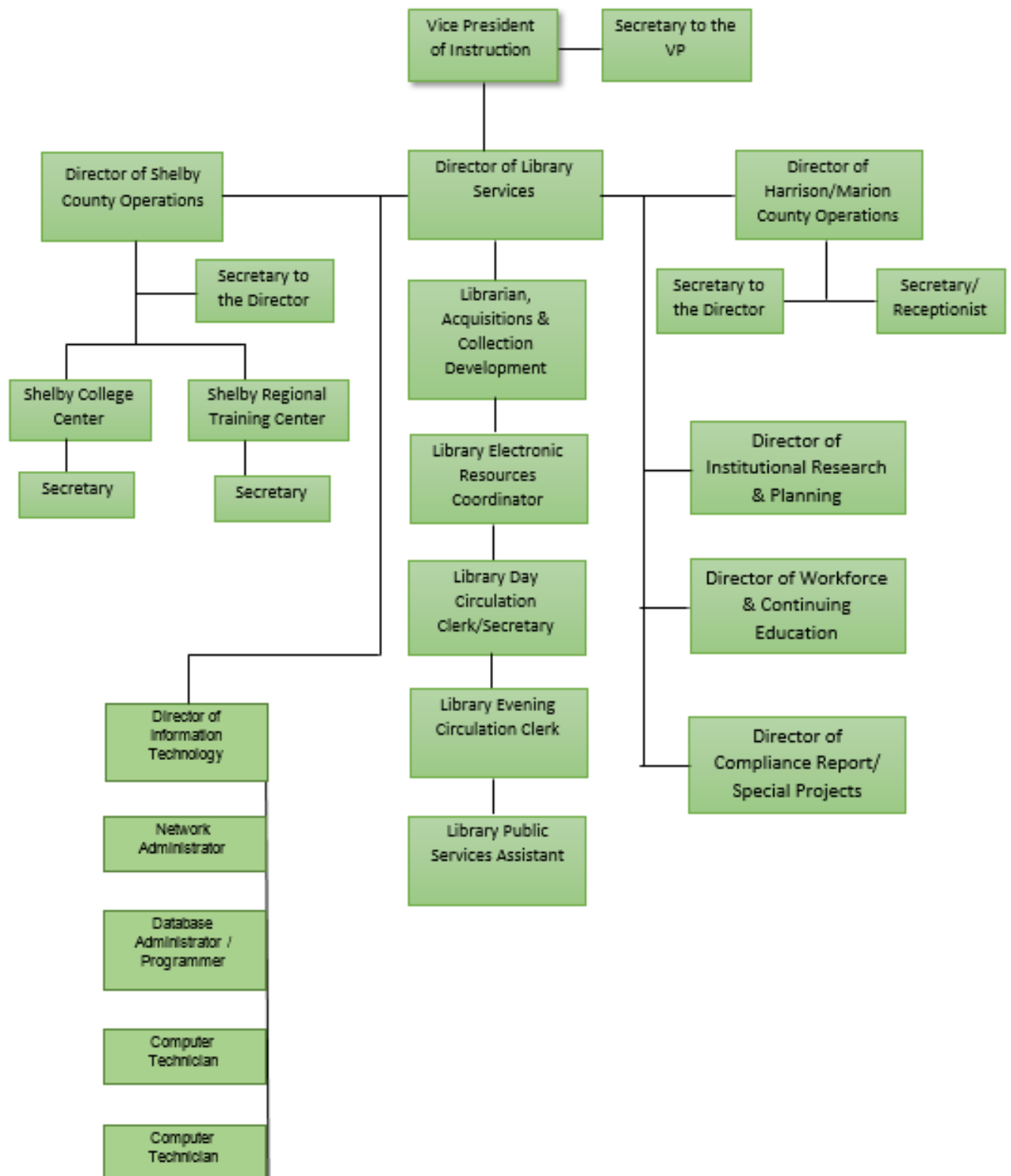


## School of Professional/ Technical Programs

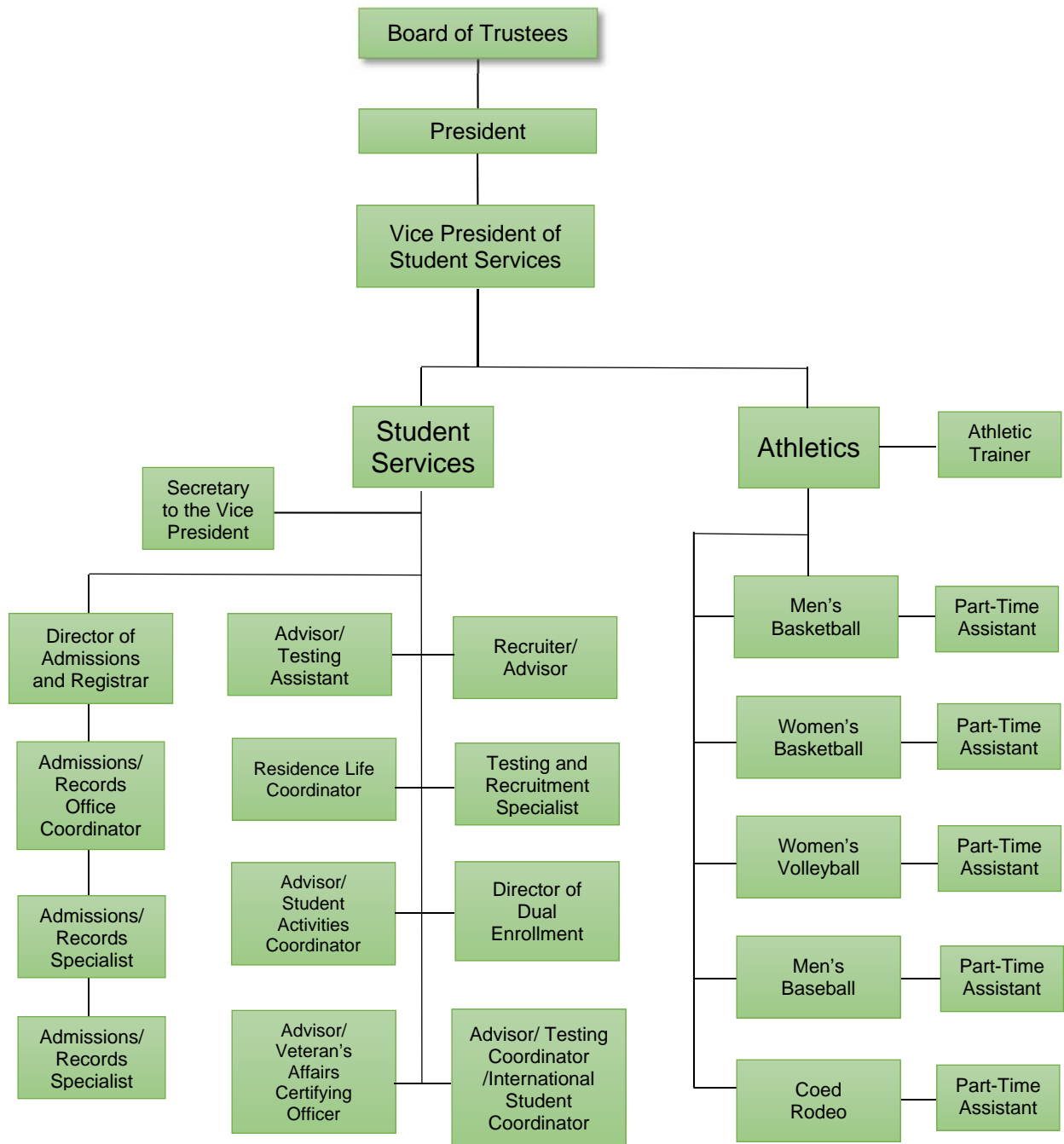




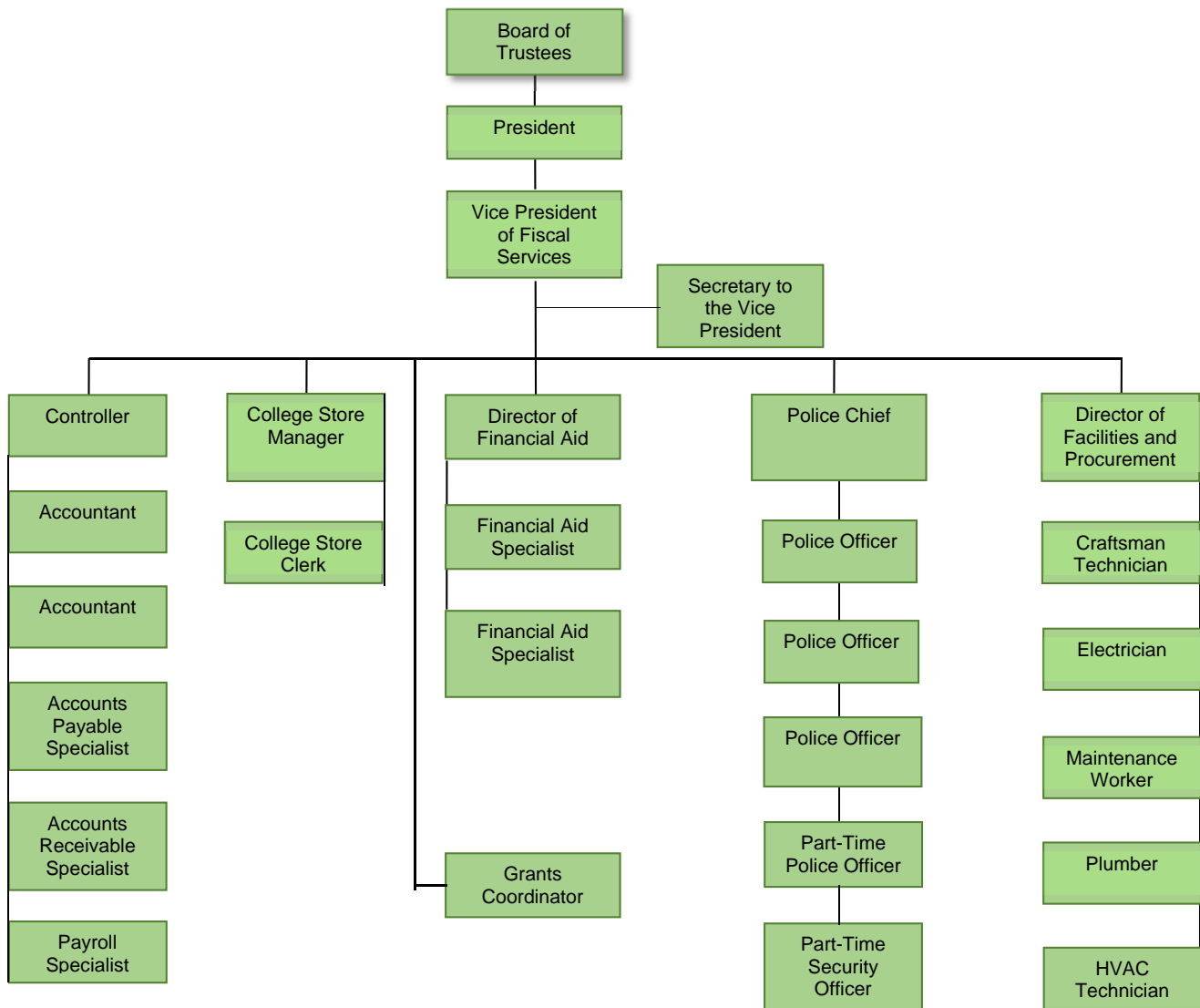
## College Divisions



## Student Services Department



## Fiscal Services



# Harrison County

## Geography

Harrison County is the 52<sup>nd</sup> largest in population of the 253 counties in Texas with an estimated population in 2019 of 66,553 according to the U. S. Census Bureau. Harrison County experienced an estimated 1% increase in population since the 2010 census, compared to the state increase of 15%. The county seat is Marshall (22,831), and Panola College's Marshall Center is located in this city in the Marshall Mall. Other towns found within the county include Elysian Fields (500\*); Hallsville (4,296); Harleton (2,192); Karnack (2,917); Waskom (2,160); and part of Longview. Harrison County is a metro county which lies within the East Texas Workforce Planning region, administered by the Technology Partnership Organization.

The county consists of 900 square miles of land area with a population density of 72.9 residents per square mile according to the 2010 population. The average density in Texas is currently estimated as 96.3 persons per square mile.<sup>1</sup> The county consists primarily of timberland and includes the Sabine River and Caddo Lake ecosystems.

## Population Statistics

The U. S. Census Bureau estimates the county's race/ethnic distribution to be:<sup>2</sup>

	Harrison County	Texas
White, non-Hispanic	75.0%	78.8%
Hispanic or Latino	13.6%	39.6%
Black	21.1%	12.8%
Asian	0.8%	5.2%
Pacific Islander	0.1%	0.1%
American Indian or Alaskan Native	1.2%	1.0%
Report 2 or more races <sup>3</sup>	1.7%	2.0%

The 2018 projected estimates show a population composition according to age as follows:<sup>4</sup>

Age	Harrison County	Texas
0-4	6.8%	7.1%
5-17	18.6%	18.5%
18-24	8.2%	10.1%
25-29	7.0%	7.4%
30-44	18.2%	20.4%
45-64	24.7%	23.8%
65 plus	16.6%	12.7%

\*2010 census information is not available for these towns.

---

<sup>1</sup> U. S. Census Bureau, Census 2010 and Texas Quick Facts population estimates for 2019

<sup>2</sup> U. S. Census Bureau Texas County Quick Facts population estimates published July 2019

<sup>3</sup> Two or more races are also included in other race categories. For this reason, the total percentage may be more than 100%

<sup>4</sup> Population projections by age for 2018 for Texas and Harrison County, TX were obtained from the Texas State Data Center and Office of the State Demographer

When the population cohort of ages 45 and over is higher than the state average, as it is in Harrison County, this suggests a stable, mature population comprised of mainly "empty-nesters," retirees and the aged. When the age 25-44 cohort is higher than the state average, this is a healthy economic situation since this group contains the greatest share of the productive labor force. Decreases over time in this group, especially when similar changes are not occurring statewide, can be an indication that people are moving out of an area they consider to be a poor labor market.<sup>5</sup> In Harrison County the total number in the age group of 25 to 44, was 17,217 or 25.2 percent. This compares to a statewide percentage of 27.8 percent based on the estimated 2018 population.<sup>6</sup>

Harrison County had an average of 23,217 households for the 2018 estimate. This represents an average of 2.8 persons per household. Statewide, there were 2.9 persons per household during the same time period with 9,553,046 Texas households. In 2018, an estimated 25.4% of Harrison County residents were children under age 18. These are our potential college students.<sup>6</sup>

Local industry consists primarily of educational services, and health care and social assistance; manufacturing; and retail trade. The average median household income for Harrison County between 2014 and 2018 was \$51,202, compared with a state average median income of \$59,570 for that same period. Twelve percent of Harrison County households earn less than \$15,000 per year, and 6.6% earn more than \$150,000 annually. Statewide 19.8% of households earn less than \$15,000, and 13.7% earn more than \$150,000 annually. The average unemployment rate in the county over the past five years is 4.8% compared to 4.9% statewide average for the same time period<sup>7</sup>. It was recently estimated that 14.7% of Harrison County residents live below the poverty level, compared to 14.9% rate statewide.<sup>8</sup>

There are six independent school districts in Harrison County: Elysian Fields ISD, Hallsville ISD, Harleton ISD, Karnack ISD, Marshall ISD, and Waskom ISD with an estimated grade 7-12 enrollment of 6,091 and an average dropout rate of 1.4% which is the same as the state dropout rate of 1.4%.<sup>9</sup>

Tracking May 2018 high school graduates, 13.9% of Elysian Fields, 1.8% of Hallsville, 0% of Harleton, 3.6% of Marshall, and 9.8% of Waskom high school graduates, who were known to have enrolled in a public Texas college for fall 2018, enrolled in Panola College. Information was not available from this source for Karnack ISDs.<sup>10</sup>

---

<sup>5</sup> Texas Work Force Commission, Labor Market and Career Information Department, County Narrative Profile

<sup>6</sup> U. S. Census Bureau Texas County Quick Facts population estimates for 2019, published July 2019

<sup>7</sup> U. S. Census Bureau American Community Survey, 2014-2018 average

<sup>8</sup> U. S. Census Bureau Texas County Quick Facts average for years 2014-2018

<sup>9</sup> Texas Education Agency Secondary School Completion and Dropouts in Texas Public Schools, Supplemental County Data, 2017-2018

<sup>10</sup> Texas Higher Education Coordinating Board- High School Graduates Enrolled in Texas Higher Education (fall 2018)



# Marion County

## Geography

Marion County is the 167th largest in population of the 253 counties in Texas with an estimated population in 2019 of 9,854 according to the U. S. Census Bureau. The Marion County population decreased by an estimated 7% since the 2010 census, compared to the state rate of population growth of 15%. The county seat of Marion is Jefferson (1,915) which is by far the most populated city in the county. Marion County is a rural county which lies within the East Texas Workforce Planning region, administered by the Technology Partnership Organization.

The county consists of 380.88 square miles of land area with a population density estimate of 28 residents per square mile according to the 2010 population. The average density in Texas is currently estimated as 96.3 persons per square mile.<sup>11</sup> Pines and hardwood forests cover most of the county and the watershed drains to Caddo Lake, Lake O' the Pines, and Cypress Bayou.

## Population Statistics

The U. S. Census Bureau estimates the county's race/ethnic distribution to be:<sup>12</sup>

	Marion County	Texas
White, non-Hispanic	74.0%	78.8%
Hispanic or Latino	4.3%	39.6%
Black	21.3%	12.8%
Asian	0.9%	5.2%
Pacific Islander	0.1%	0.1%
American Indian or Alaskan Native	1.2%	1.0%
Report 2 or more races <sup>13</sup>	2.4%	2.0%

The 2018 projected estimates show a population composition according to age as follows:<sup>14</sup>

Age	Marion County	Texas
0-4	4.8%	7.1%
5-17	13.7%	18.5%
18-24	6.7%	10.1%
25-29	5.2%	7.4%
30-44	14.7%	20.4%
45-64	29.7%	23.8%
65 plus	25.2%	12.7%

---

<sup>11</sup> U. S. Census Bureau, Texas County Quick Facts population estimates for 2019

<sup>12</sup> U. S. Census Bureau Texas County Quick Facts population estimates published July 2019

<sup>13</sup> Two or more races also are included in other race categories. For this reason, the total percentage may be more than 100%

<sup>14</sup> Population projections by age for Texas and Marion County, TX for 2018 were obtained from the Texas State Data Center and Office of the State Demographer

If the population cohort 45 and over is higher than the state average as it is in Marion County, this suggests a stable, mature population comprised of mainly "empty-nesters," retirees and the aged. When the 25-44 age cohort is higher than the state average, this is a healthy economic situation since this group contains the greatest share of the productive labor force. Decreases over time in this group as is the case in Marion County, especially when similar changes are not occurring statewide, can be an indication that people are moving out of an area they consider to be a poor labor market.<sup>15</sup> In Marion County the total number in the age group of 25 to 44, was 1,979 or 19.9 percent. This compares to a statewide percentage of 27.8 percent based on the estimated 2018 population.<sup>16</sup>

Marion County had an average of 4,459 households between 2014 and 2018. This represents an average of 2.2 persons per household. Statewide, there were 2.9 persons per household during the same time period with 9,553,046 Texas households. In 2018, an estimated 19.0% of Marion County residents were children under the age of 18. These are our potential college students.<sup>16</sup>

Local industry consists primarily of education, health care, social services; retail trade, and manufacturing. The average median household income of Marion County between 2014 and 2018 was \$37,283 compared to the state average median household income of \$59,570 for that same period. Nineteen percent of Marion County households earn less than \$15,000 per year, and 7.9% earn more than \$150,000 annually. Statewide 19.8% of households earn less than \$15,000, and 13.7% earn more than \$150,000 annually. The average unemployment rate in the county over the past five years is 11.1% compared to 4.9% statewide average for the same time period.<sup>17</sup> It has been estimated that 21.9% of Marion County residents live below the poverty level, compared to 14.9% rate statewide.<sup>18</sup>

There is one independent school district in the county, Jefferson ISD, with a grade 7-12 enrollment estimate of 590 students and an average dropout rate of 0.5% compared to the state dropout rate for the same age level of 1.4%.<sup>19</sup>

Tracking May 2018 high school graduates, 13.3% of Jefferson high school graduates, who were known to have enrolled in a public Texas college for fall 2017, enrolled in Panola College.<sup>20</sup>

---

<sup>15</sup> Texas Work Force Commission, Labor Market and Career Information Department, County Narrative Profile

<sup>16</sup> U. S. Census Bureau Texas County Quick Facts population estimates for 2019, published July 2019

<sup>17</sup> U. S. Census Bureau American Community Survey, 2014-2018 average from American Fact Finder

<sup>18</sup> U. S. Census Bureau Texas County Quick Facts average for years 2014-2018

<sup>19</sup> Texas Education Agency Secondary School Completion and Dropouts in Texas Public Schools, Supplemental County Data, 2017-2018

<sup>20</sup> Texas Higher Education Coordinating Board- High School Graduates Enrolled in Texas Higher Education (fall 2018)

# Panola County

## Geography

Panola County ranks the 106th largest in population of the 253 counties in Texas with an estimated population in 2019 of 23,194 according to the U. S. Census Bureau. Panola County's population decreased an estimated 3% since the 2010 census, compared to the state rate of population growth of 15%. The city of Carthage, with an estimated population of 6,431, is the county seat and is the site of Panola College. Other towns in the county include: Beckville (823); Gary (300); and Tatum (1,384). Panola County is a rural county which lies within the East Texas Workforce service delivery area and the East Texas Quality Workforce Planning region, administered by the Technology Partnership Organization.

The county consists of 801.75 square miles of land area with a population density of 29.7 residents per square mile according to the 2010 population. The average density in Texas is currently estimated at 96.3 persons per square mile.<sup>21</sup> Panola County is 60% timberland, and its rolling plains are broken by the Sabine River, Murvaul Creek and Toledo Bend Reservoir.

## Population Statistics

The U. S. Census Bureau estimates the county's race/ethnic distribution to be:<sup>22</sup>

	<i>Panola County</i>	<i>Texas</i>
White, non-Hispanic	80.3%	78.8%
Hispanic or Latino	8.8%	39.6%
Black	15.9%	12.8%
Asian	0.9%	5.2%
Pacific Islander	0.1%	0.1%
American Indian or Alaskan Native	0.7%	1.0%
Report 2 or more races <sup>23</sup>	2.1%	2.0%

The 2018 projected estimates show a population composition according to age as follows:<sup>24</sup>

<i>Age</i>	<i>Panola County</i>	<i>Texas</i>
0-4	6.6%	7.7%
5-17	17.7%	19.6%
18-24	7.7%	10.2%
25-29	6.7%	7.4%
30-44	18.1%	20.8%
45-64	24.3%	24.0%
65 plus	19.0%	10.4%

---

<sup>21</sup> U. S. Census Bureau, Census 2010 and Texas County Quick Facts population estimates for 2019

<sup>22</sup> U. S. Census Bureau Texas County Quick Facts population estimates published July 2019

<sup>23</sup> Two or more races also are included in other race categories. For this reason, the total percentage may be more than 100%

<sup>24</sup> Population projections by age for Texas and Panola County, TX for 2018 were obtained from the Texas State Data Center and Office of the State Demographer

If the population cohort 45 and over is higher than the state average, as it is in Panola County, this suggests a stable, mature population comprised of mainly "empty-nesters," retirees and the aged. When the 25-44 age cohort is higher than the state average, this is a healthy economic situation since this group contains the greatest share of the productive labor force. Decreases over time in this group, as is the case with Panola County, especially when similar changes are not occurring statewide, can be an indication that people are moving out of an area they consider to be a poor labor market.<sup>25</sup> In Panola County the total number in the age group of 25 to 44, was 6,090 or 24.8 percent. This compares to a statewide percentage of 27.8 percent based on the estimated 2018 population.<sup>26</sup>

Panola County had an average of 8,827 households between 2014 and 2018. This represents an average of 2.6 persons per household. Statewide, there were 2.9 persons per household in that same period with 9,553,046 Texas households. In 2018, it was estimated 24.3% of Panola County residents were children under the age of 18. These are our potential college students.<sup>26</sup>

Local industry consists primarily of agriculture, forestry, fishing and hunting, and mining; educational services, and health care and social assistance; and retail trade. The average median household income between 2014 and 2018 was \$51,569; compared to the state average median household income of \$59,570 for that same period. Thirteen percent of Panola County households earn less than \$15,000 per year, and 7.7% earn more than \$150,000 annually. Statewide 19.8% of households earn less than \$15,000, and 13.7% earn more than \$150,000 annually. The average unemployment rate in the county over the past five years is 4.6% compared to 4.9% statewide average for the same time period.<sup>27</sup> It has been estimated that 15.7% of Panola County residents live below the poverty level, compared to 14.9 % rate statewide.<sup>28</sup>

There are three independent school districts and one charter school in the county: Beckville ISD, Carthage ISD, Gary ISD and Panola Charter School with an estimated grade 7-12 enrollment of 2,021 and an average dropout rate of 0.8% compared to the state dropout rate of 1.4%.<sup>29</sup>

Tracking May 2018 high school graduates, 38.5% of Beckville, 22.6% of Carthage, and 48.5% of Gary high school graduates, who were known to have enrolled in a Texas public college for fall 2017, enrolled in Panola College.<sup>30</sup> Information was not provided for Panola Charter School.

---

<sup>25</sup> Texas Work Force Commission, Labor Market and Career Information Department, County Narrative Profile

<sup>26</sup> U. S. Census Bureau Texas County Quick Facts population estimates for 2019, published July 2019

<sup>27</sup> U. S. Census Bureau American Community Survey, 2014-2018 average from American Fact Finder

<sup>28</sup> U. S. Census Bureau Texas County Quick Facts average for years 2014-2018

<sup>29</sup> Texas Education Agency Secondary School Completion and Dropouts in Texas Public Schools, Supplemental District Data, 2017-2018

<sup>30</sup> Texas Higher Education Coordinating Board- High School Graduates Enrolled in Texas Higher Education (fall 2018)

# Shelby County

## Geography

Shelby County is the 101<sup>st</sup> largest in population of the 253 counties in Texas with an estimated population in 2019 of 25,274 according to the U. S. Census Bureau. Shelby County's population has had an estimated decrease of 1% since the 2010 census, compared to the state rate of population growth of 15%. The county seat of Shelby is Center (5,175), so named because of its location in the center of the county. Panola College's Shelby College Center and Shelby Regional Training Center are located in Center, Texas. Other towns in the county include Timpson (1,134), Tenaha (1,146), Joaquin (805), and Shelbyville (2,599\*).

The county consists of 796 square miles of land area with a population density of 32.0 residents per square mile according to the 2010 population. The average density in Texas is currently estimated at 96.3 persons per square mile.<sup>31</sup> A large proportion of the county is hardwood bottomland, and 67,762 acres is national forest land. Bodies of water include Attoyac Bayou and Toledo Bend Reservoir with many other streams.

## Population Statistics

The U. S. Census Bureau estimates the county's race/ethnic distribution to be:<sup>32</sup>

	Shelby County	Texas
White, non-Hispanic	78.1%	78.8%
Hispanic or Latino	18.6%	39.6%
Black	17.8%	12.8%
Asian	1.5%	5.2%
Pacific Islander	0.1%	0.1%
American Indian or Alaskan Native	1.0%	1.0%
Report 2 or more races <sup>33</sup>	1.5%	2.0%

The 2018 projected estimates show a population composition according to age as follows:<sup>34</sup>

Age	Shelby County	Texas
0-4	7.4%	7.1%
5-17	18.8%	18.5%
18-24	7.6%	10.1%
25-29	6.4%	7.4%
30-44	17.5%	20.4%
45-64	24.9%	23.8%
65 plus	17.5%	12.7%

\*2010 census information is not available for this town.

<sup>31</sup> U. S. Census Bureau, Census 2010 and Texas County Quick Facts population estimates for 2019

<sup>32</sup> U. S. Census Bureau Texas County Quick Facts population estimates published July 2019

<sup>33</sup> Two or more races also are included in other race categories. For this reason, the total percentage may be more than 100%

<sup>34</sup> Population projections by age for Texas and for Shelby County, TX for 2018 were obtained from the Texas State Data Center and Office of the State Demographer



If the population cohort of ages 45 and over is higher than the state average, as it is in Shelby County, this suggests a stable, mature population comprised of mainly "empty-nesters", retirees and the aged. When the 25-44 age cohort is higher than the state average, this is a healthy economic situation since this group contains the greatest share of the productive labor force. Decreases over time in this group, as is the case in Shelby County, especially when similar changes are not occurring statewide, can be an indication that people are moving out of an area they consider to be a poor labor market.<sup>35</sup> In Shelby County the total number in the age group of 25 to 44, was 5,864 or 23.9 percent. This compares to a statewide percentage of 27.8 percent based on the estimated 2018 population.<sup>35</sup>

Shelby County had an average of 9,292 households between 2014 and 2018. This represents an average of 2.7 persons per household. Statewide, there were 2.9 persons per household during that same period with 9,553,046 Texas households. In 2018, an estimated 26.2% of Shelby County residents were children under the age of 18. These are our potential college students.<sup>36</sup>

Local industry consists primarily of educational services, and health care and social assistance; agriculture, forestry, fishing and hunting, and mining; and manufacturing. The average median household income between 2014 and 2018 was \$40,764 compared to the state average median household income of \$59,570 for that same period. Seventeen and six-tenths percent of Shelby County households earn less than \$15,000 per year, and 4.2% earn more than \$150,000 annually. Statewide 19.8% of households earn less than \$15,000, and 13.7% earn more than \$150,000 annually. The average unemployment rate in the county over the past five years is 7.2% compared to 4.9% statewide average for the same time period.<sup>37</sup> It has been estimated that 20.6 of Shelby County residents live below the poverty level, compared to 14.9% rate statewide.<sup>38</sup>

There are six independent school districts in the county: Center ISD, Excelsior ISD, Joaquin ISD, Shelbyville ISD, Tenaha ISD, and Timpson ISD with an estimated grade 7-12 enrollment of 2,440 and an average dropout rate of 0.3% compared to the state dropout rate of 1.4%.<sup>39</sup>

Tracking May 2018 high school graduates, 29.2% of Center, 21.3% of Joaquin, 28.3% of Shelbyville, 34.7% of Tenaha, and 21.1% of Timpson high school graduates, who were known to have enrolled in a Texas public college for fall 2017, enrolled in Panola College.<sup>40</sup>

---

<sup>35</sup> Texas Work Force Commission, Labor Market and Career Information Department, County Narrative Profile

<sup>36</sup> U. S. Census Bureau Texas County Quick Facts population estimates for 2019, published July 2019

<sup>37</sup> U. S. Census Bureau American Community Survey, 2014-2018 average from American Fact Finder

<sup>38</sup> U. S. Census Bureau Texas County Quick Facts average for years 2014-2018

<sup>39</sup> Texas Education Agency Secondary School Completion and Dropouts in Texas Public Schools, Supplemental District Data, 2017-2018

<sup>40</sup> Texas Higher Education Coordinating- High School Graduates Enrolled in Texas Higher Education (fall 2018)

## Panola College District Demographics

Educational Attainment – Population 25 years and older, 2014-2018 Five Year Estimates <sup>41</sup>						
	Harrison County	Marion County	Panola County	Shelby County	4 County College District	Texas
No HS diploma or GED	10.2%	12.8%	11.1%	14.2%	12.1%	8.3%
High school graduate or GED	34.3%	40.7%	33.5%	33.4%	33.5%	25.0%
Some college, no degree	24.3%	21.7%	27.9%	21.9%	24.0%	21.8%
Associate degree	7.1%	6.2%	6.8%	5.3%	6.4%	7.1%
Bachelor's degree	13.3%	10.6%	10.5%	10.9%	11.3%	19.1%
Graduate or professional degree	5.8%	4.2%	5.0%	3.6%	4.7%	10.2%
<b>Total HS graduate or higher</b>	<b>84.9%</b>	<b>83.5%</b>	<b>83.7%</b>	<b>75.0%</b>	<b>81.8%</b>	<b>83.2%</b>
<b>Total Bachelor's degree or higher</b>	<b>19.1%</b>	<b>14.9%</b>	<b>15.5%</b>	<b>14.5%</b>	<b>16.0%</b>	<b>29.3%</b>

Income Data, 2014- 2018 Five Year Averages						
Years 2014-2018 Average	Harrison County	Marion County	Panola County	Shelby County	4 County College District	Texas
Persons below poverty level in last 12 months <sup>42</sup>	16.1%	20.7%	15.9%	23.3%	19.0%	15.5%
Median household income <sup>43</sup>	\$51,202	\$37,283	\$51,569	\$40,764	\$45,205	\$59,570
Per capita personal income <sup>44</sup>	\$25,418	\$27,052	\$26,403	\$20,969	\$24,961	\$30,143

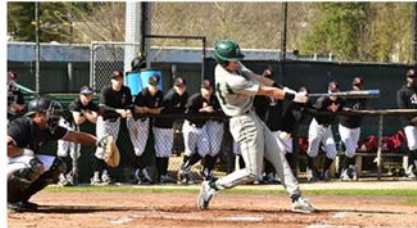
<sup>41</sup> U. S. Census Bureau Fact Finder, 2014-2018 American Community Survey data

<sup>42</sup> U. S. Census Bureau Fact Finder, 2014-2018 American Community Survey data

<sup>43</sup> U. S. Census Bureau Fact Finder, 2014-2018 American Community Survey data

<sup>44</sup> U. S. Census Bureau Fact Finder, 2014-2018 American Community Survey data



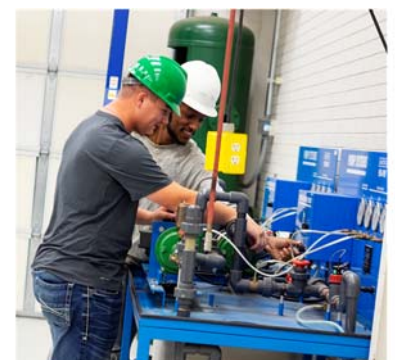


# INSTITUTIONAL DATA



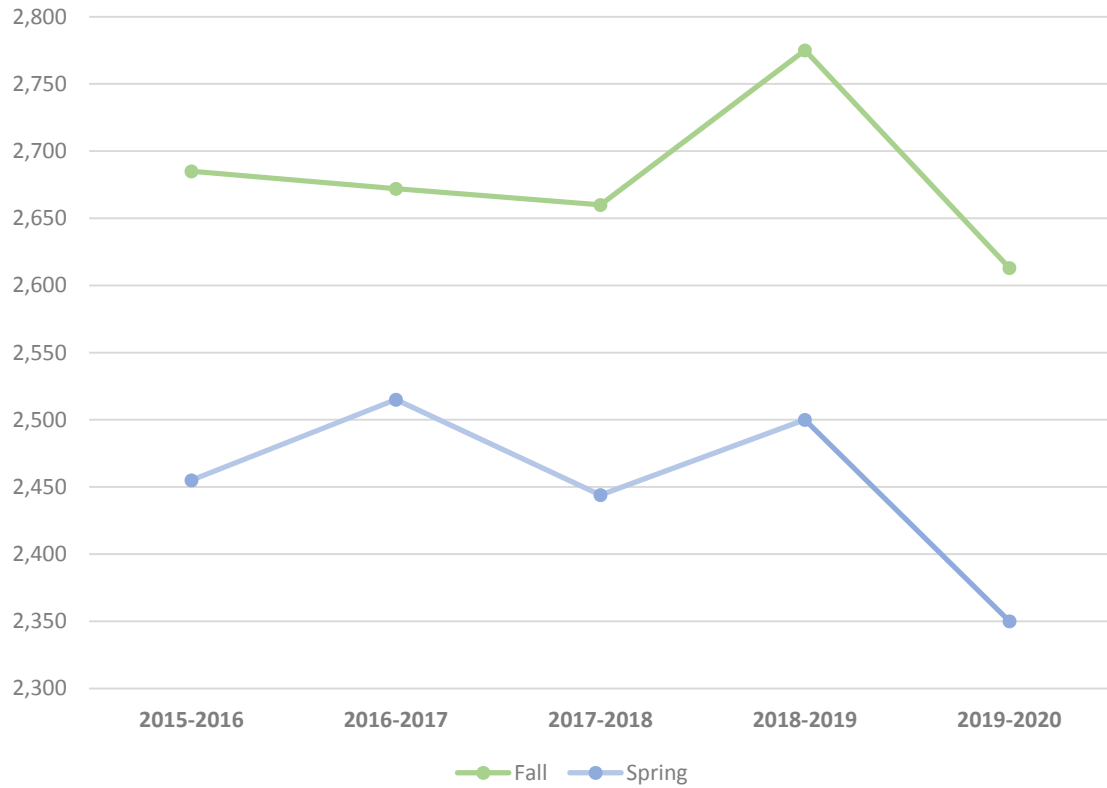
**COVID-19  
Closure**

Spring 2020



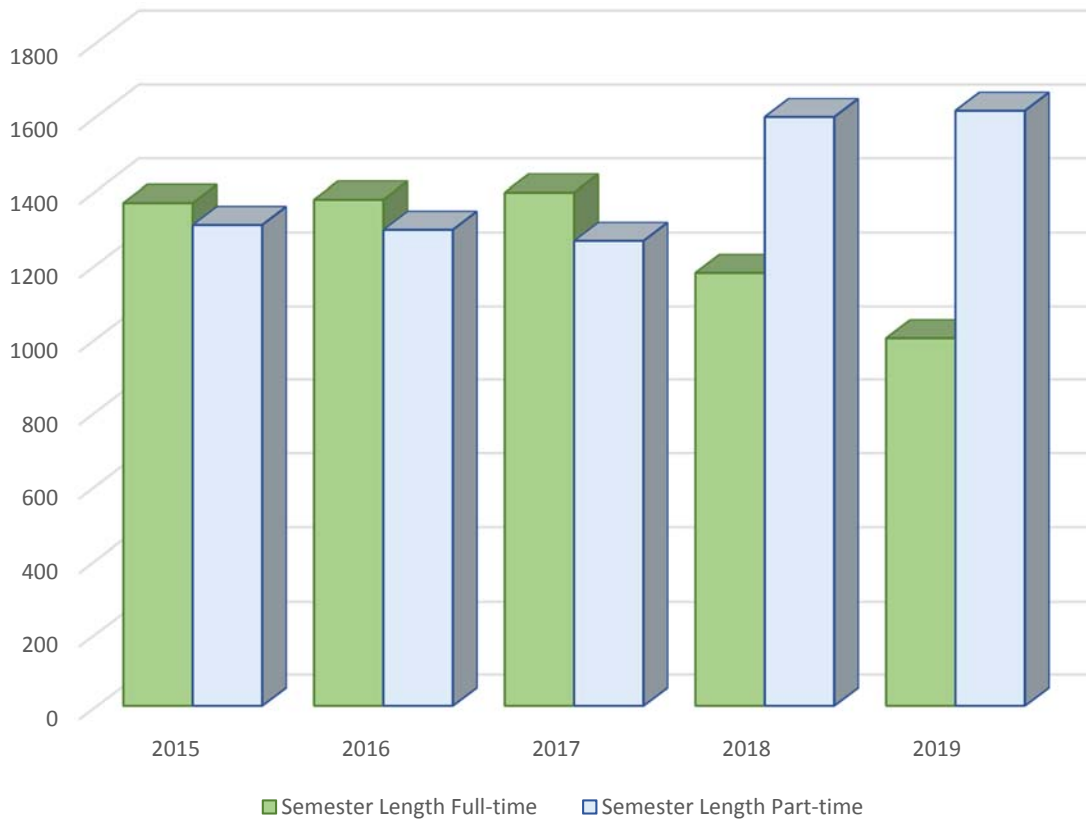
*Photos courtesy of Teresa Beasley,  
Kade Lindsay, and Craig Cain*

## Fall / Spring Enrollment Report



	Year	2015-2016	2016-2017	2017-2018	2018-2019	2019-2020
<b>Number of Students</b>	<b>Fall</b>	2,685	2,672	2,660	2,775	2,613
	<b>Spring</b>	2,455	2,515	2,444	2,500	2,350

Credit Enrollment by Full-time / Part-time Status  
Fall Semesters

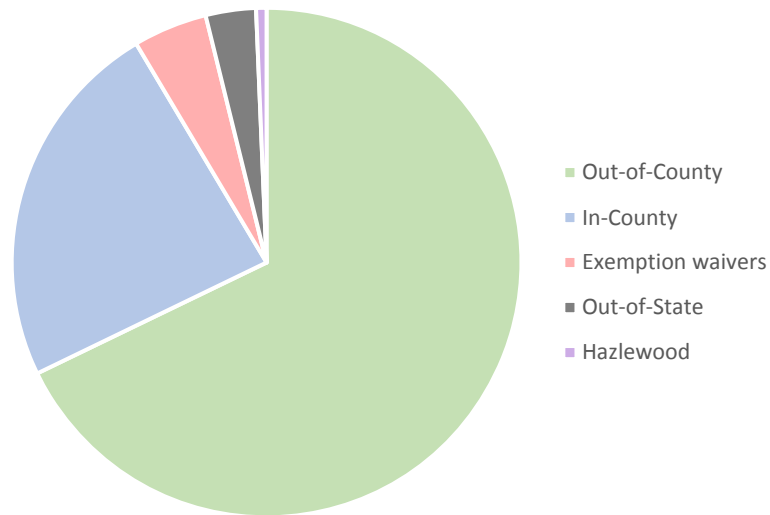


Status	2015	2016	2017	2018	2019
Semester Length Full-time	1,365	1,374	1,393	1,176	999
Semester Length Part-time	1,306	1,293	1,263	1,597	1,614
Total	2,671	2,667	2,656	2,773	2,613



Fall Credit Enrollment  
by Tuition Status and Geographical Distribution

2019 Tuition Status

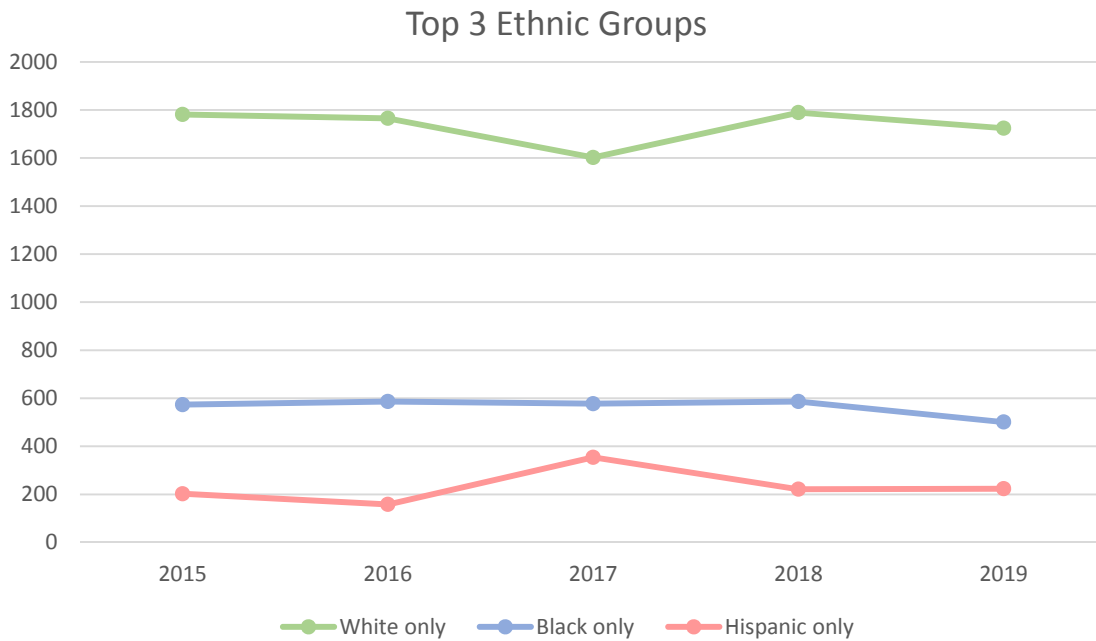


<b>Tuition Status</b>	<b>2015</b>	<b>2016</b>	<b>2017</b>	<b>2018</b>	<b>2019</b>
In-County	700	692	648	618	608
Out-of-County	1,715	1,698	1,706	1,875	1,746
Out-of-State (excludes LA*)	50	66	85	74	82
Exemption waivers (includes LA*)	138	145	141	134	121
Hazelwood	29	27	34	25	17
<b>Total</b>	<b>2,632</b>	<b>2,628</b>	<b>2,614</b>	<b>2,751</b>	<b>2,574</b>

\* LA residents are reported in the exemptions/waivers category.

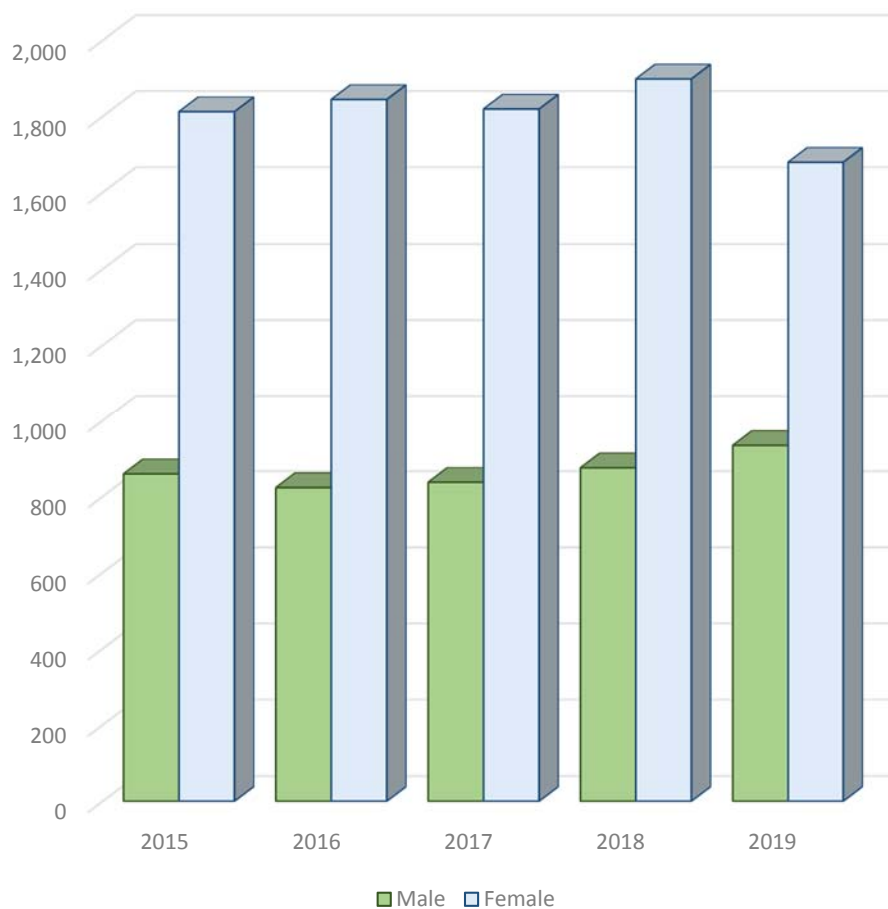
<b>Geographic Distribution</b>	<b>2015</b>	<b>2016</b>	<b>2017</b>	<b>2018</b>	<b>2019</b>
In-State	2,483	2,455	2,429	2,565	2,410
Out-of-State	146	147	147	162	128
Foreign	42	65	80	46	75
<b>Total</b>	<b>2,671</b>	<b>2,667</b>	<b>2,656</b>	<b>2,773</b>	<b>2,613</b>

## Credit Students by Ethnicity Fall Semesters Trend



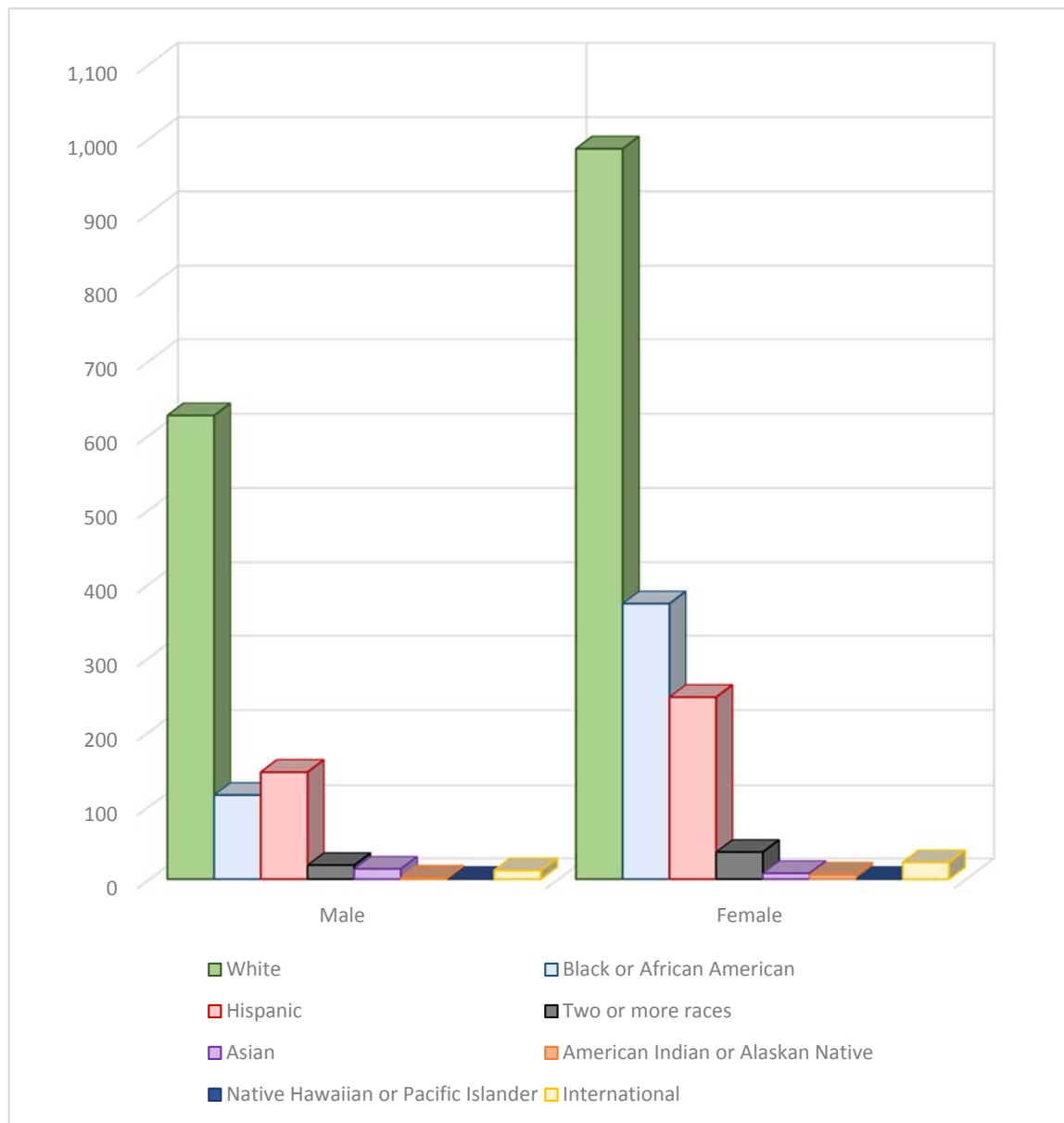
Ethnic Group	2015	2016	2017	2018	2019
White only	1,781	1,765	1,602	1,789	1,724
Black or African American only	573	586	577	586	501
Hispanic only	202	158	354	221	223
Asian only	14	22	23	20	25
American Indian/Alaskan Native only	26	31	7	39	38
International only	38	58	53	46	37
Native Hawaiian/Pacific Islander	5	5	1	4	3
Two or more races	39	43	39	68	62
<b>Total</b>	<b>2,678</b>	<b>2,668</b>	<b>2,656</b>	<b>2,773</b>	<b>2,613</b>

# Credit Students by Gender Fall Semesters Trend



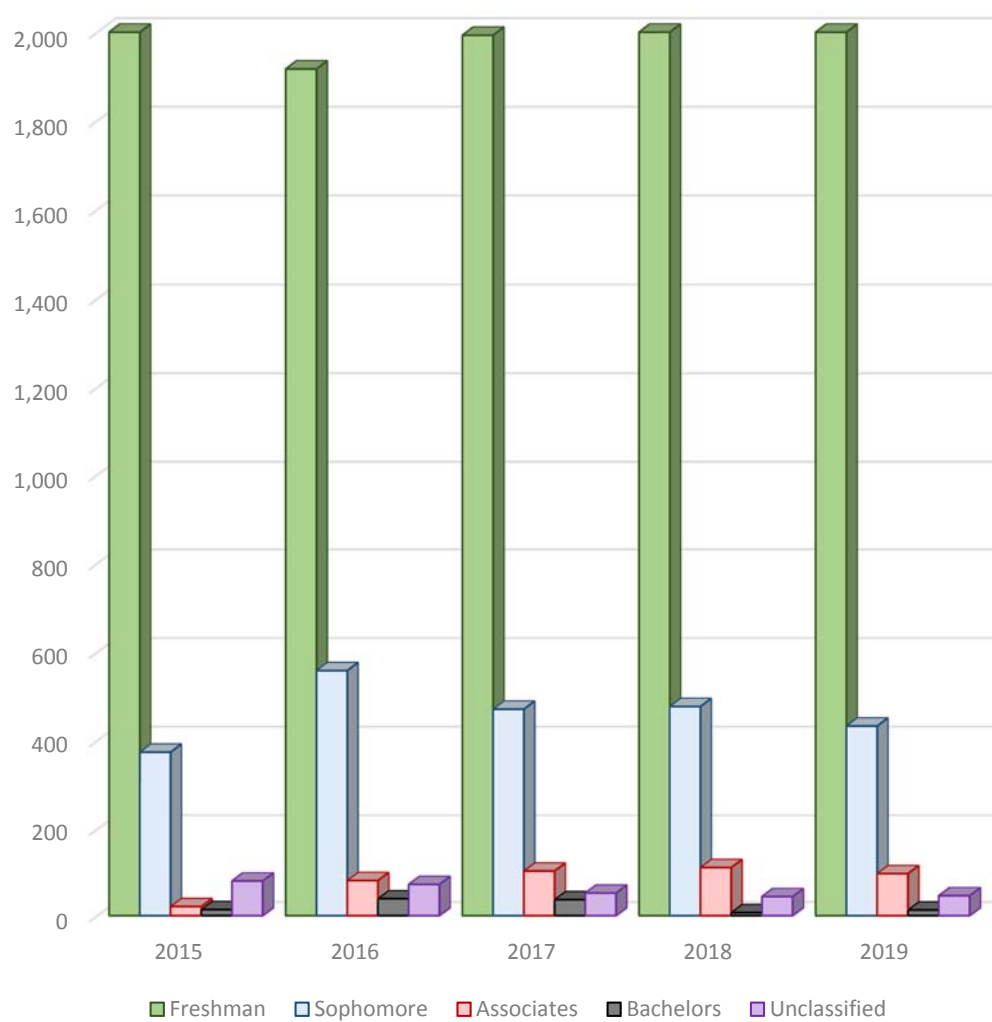
Classification	2015	2016	2017	2018	2019
Male	859	823	837	875	934
Female	1,812	1,844	1,819	1,898	1,679
Total	2,671	2,667	2,656	2,773	2,613

## Fall 2019 Credit Students Ethnic / Gender Breakdown



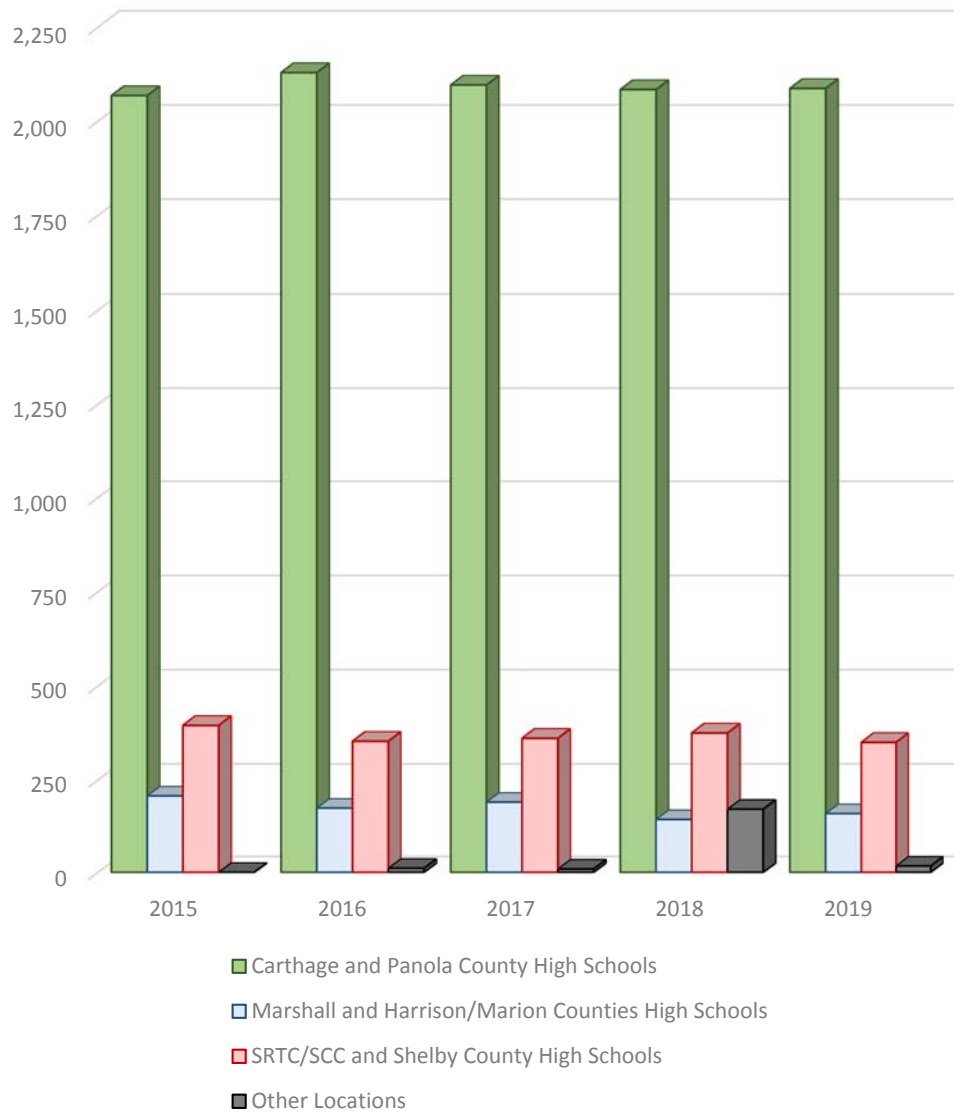
Ethnic Group	Male	Female	Total
White	626	986	1,612
Black or African American	115	373	488
Hispanic	146	246	392
Multi-racial	19	37	56
Asian	14	8	22
American Indian or Alaskan Native	2	6	8
Native Hawaiian or Pacific Islander	0	0	0
International	12	23	35
<b>Total</b>	<b>934</b>	<b>1,679</b>	<b>2,613</b>

## Fall Enrollment by Level



Level	2015	2016	2017	2018	2019
Freshman	2,182	1,917	1,993	2,134	2,024
Sophomore	374	558	471	477	433
Associates	21	81	103	111	97
Bachelors	14	39	37	7	13
Unclassified	80	72	52	44	46
<b>Total</b>	<b>2,671</b>	<b>2,667</b>	<b>2,656</b>	<b>2,773</b>	<b>2,613</b>

## Fall Student Headcount Breakdown by Campus and County



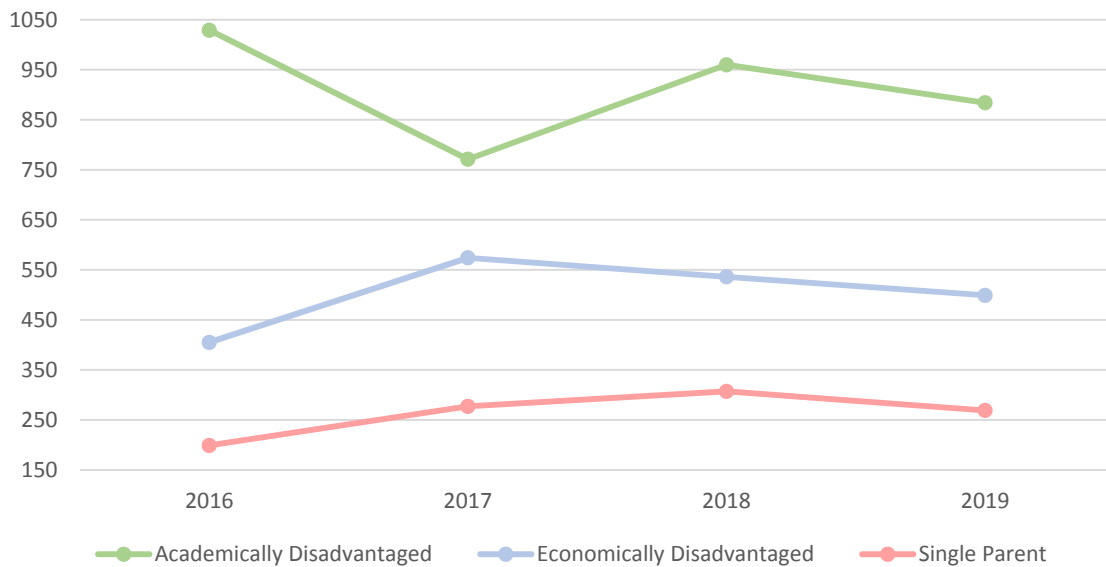
Campus Location	2015	2016	2017	2018	2019
Carthage and Panola County	2,068	2,129	2,096	2,084	2,087
Marshall and Harrison/Marion Counties	207	174	190	143	159
SRTC/SCC and Shelby County	395	353	361	375	350
Other Locations	0	11	9	171	17
<b>Total</b>	<b>2,685</b>	<b>2,667</b>	<b>2,656</b>	<b>2,773</b>	<b>2,613</b>

## Special Populations

FALL 2019

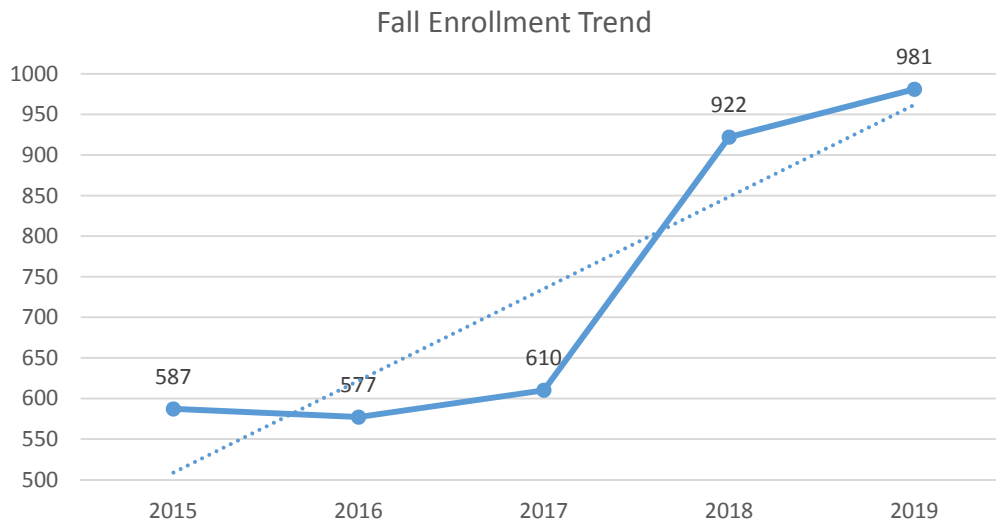
Category	No. of Students	Percent
Academically Disadvantaged	884	50%
Economically Disadvantaged	499	28%
Single Parent	269	24%
Displaced Homemaker	66	4%
Out of Workforce	37	2%
Individual w/Disability	5	0.3%
English Learner	5	0.3%
Homeless Individual	0	0%
Foster Youth	0	0%
Youth w/Active Military Parent	0	0%

Top 3 Special Populations Trend





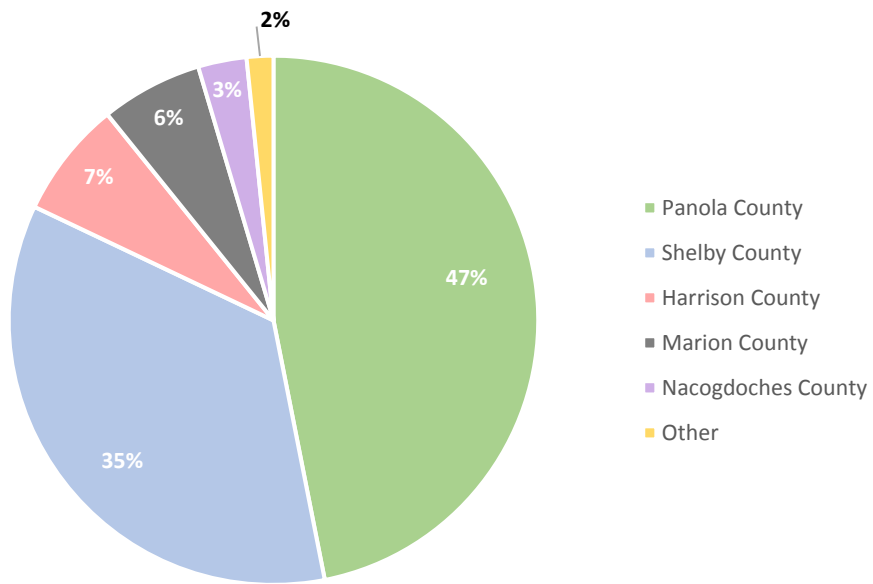
## Dual Credit/ Early Admissions



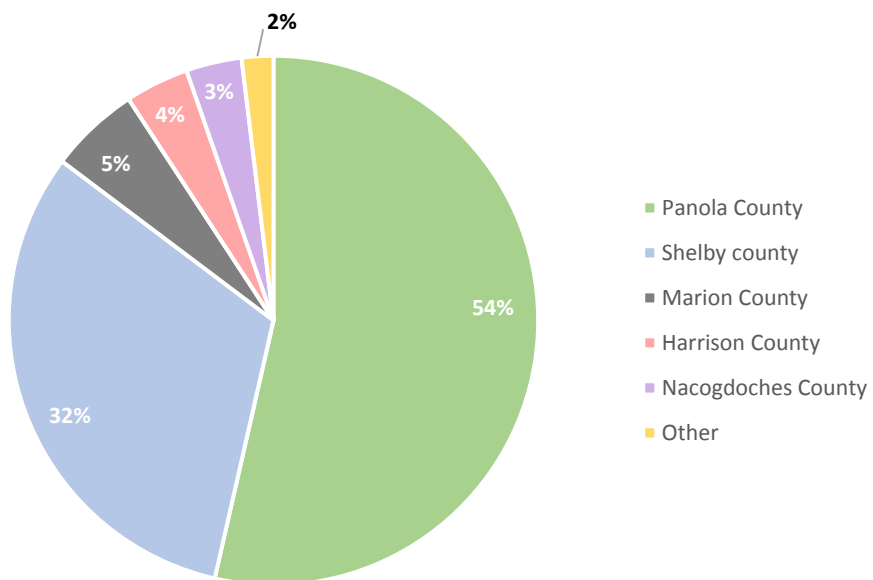
## Fall 2019 Enrollment by High School

High School	Enrollment	Semester Credit Hours
Carthage High School	145	957
Timpson High School	138	715
Panola Charter School/ PECHS/TECHS	116	849
Tatum High School	100	450
Center High School	96	362
Beckville High School	72	443
Jefferson High School	61	288
Shelbyville High School	43	219
Harleton High School	39	147
Joaquin High School	36	154
Tenaha High School	29	198
Garrison High School	28	169
Gary High School	27	104
Home School/Private	16	101
Waskom High School	14	9
Marshall High School	9	27
Elysian Fields High School	8	21
Roughrider Academy	3	11
Douglass High School	1	9

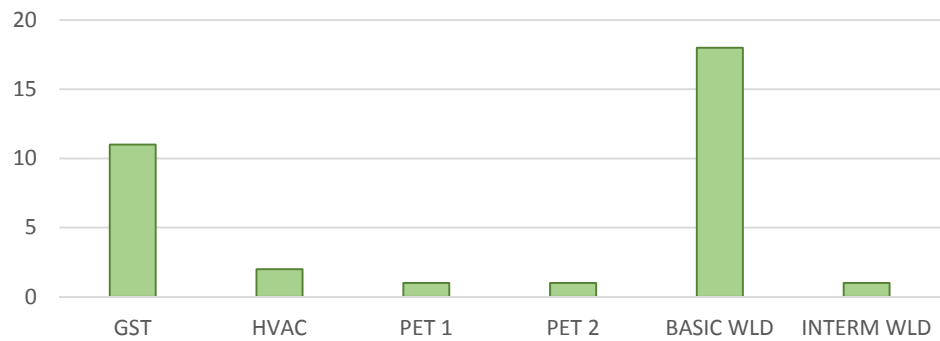
Enrollment by County



Semester Credit Hours by County

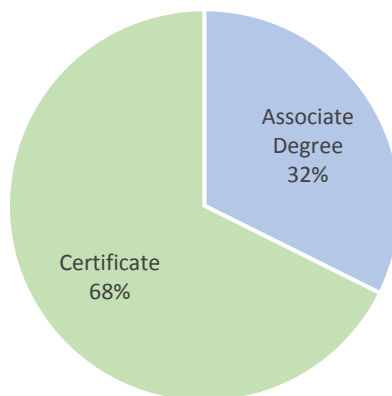


### Dual Credit Awards by Major (2019-2020)

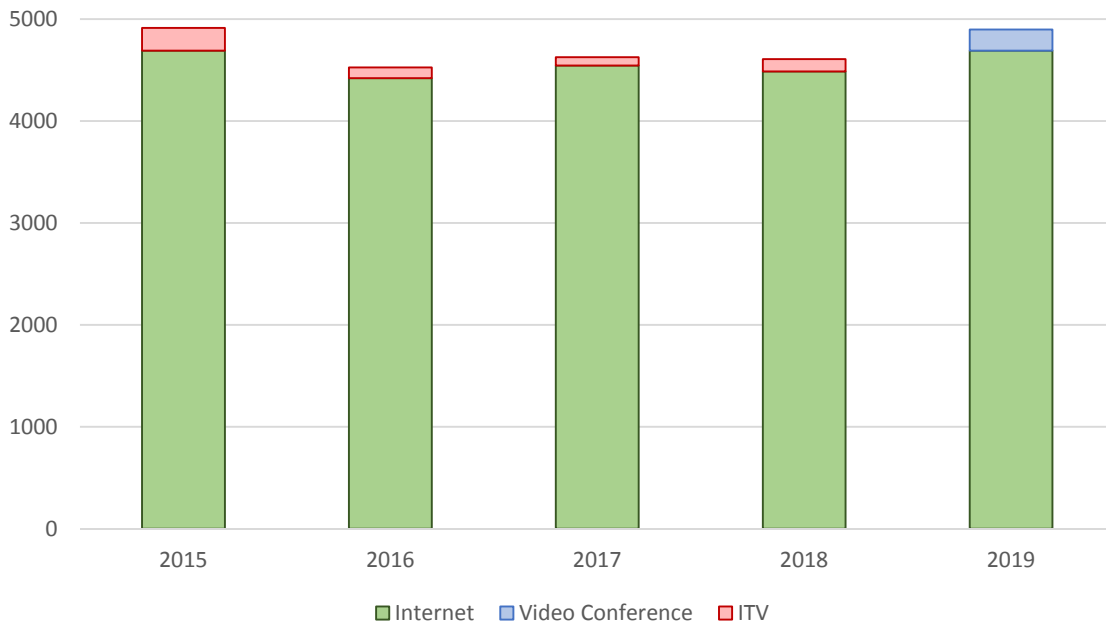


Degree	Associate of Science	Certificate	Total
General Studies	11	0	11
HVAC	0	2	2
Petroleum Technology 1	0	1	1
Petroleum Technology 2	0	1	1
Basic Welding	0	18	18
Intermediate Welding	0	1	1
<b>Total Number</b>	<b>11</b>	<b>23</b>	<b>34</b>

### Dual Credit Awards by Type



## Fall Distance Learning Duplicated Headcount



Mode of Delivery *	2015	2016	2017	2018	2019
<b>Internet</b>					
PC Provides for PC	3,664	4,244	4,069	4,162	4,109
PC Provides for PC – Flex mid-semester	12	2	192	56	109
PC Provides for PC – Hybrid	982	148**	254	259	462
PC Provides for VCT	23	20	19	6	0
PC Hosts for VCT	9	6	11	3	4
<b>Internet Total</b>	<b>4,690</b>	<b>4,420</b>	<b>4,545</b>	<b>4,486</b>	<b>4,678</b>
<b>Video Conference</b>					
PC Provides for PC	0	0	0	0	208
<b>Video Conference Total</b>	<b>0</b>	<b>0</b>	<b>0</b>	<b>0</b>	<b>208</b>
<b>Interactive Television</b>					
PC Provides PC at Remote Sites	184	106	81	122	0
PC Provides for PC – Hybrid / Flex	39	0	0	0	0
<b>ITV Total</b>	<b>223</b>	<b>106</b>	<b>81</b>	<b>122</b>	<b>0</b>
<b>Total</b>	<b>4,913</b>	<b>4,526**</b>	<b>4,626</b>	<b>4,608</b>	<b>4,886</b>

\* An explanation of modes of delivery is on the following page.

\*\*A reduction in the number of students in Hybrid classes, and thus in the total number of Distance Learning students, reflects a redefinition of the Hybrid mode that excludes some previously-included classes but is in closer alignment with state reporting standards.

## Definition of Distance Learning Modes of Delivery

### Internet Courses:

**PC Provides for PC** – Panola College students are enrolled in Internet courses offered by Panola College.

**PC Provides for VCT/DigiTex** – Students enrolled in other community colleges take Panola College Internet courses through the Virtual College of Texas (VCT). These students are not counted toward state funding, but Panola College receives a lease fee for each student.

**PC Hosts for VCT/DigiTex**– Panola College students are enrolled in other community colleges' Internet courses through the Virtual College of Texas. Panola College receives state funding for these enrollments and pays lease fees to the providing colleges.

**PC Provides for PC** – Flex classes – Students are enrolled in Internet courses for terms shorter than sixteen weeks. Two eight-week flex courses are offered in the fall and spring semesters and courses of various lengths are offered in specific programs as needed.

**PC Provides Online Hybrid for PC** – Panola College students are enrolled in classes offered by Panola College in which 51-84% of the instruction occurs online.

### Video Conference Courses:

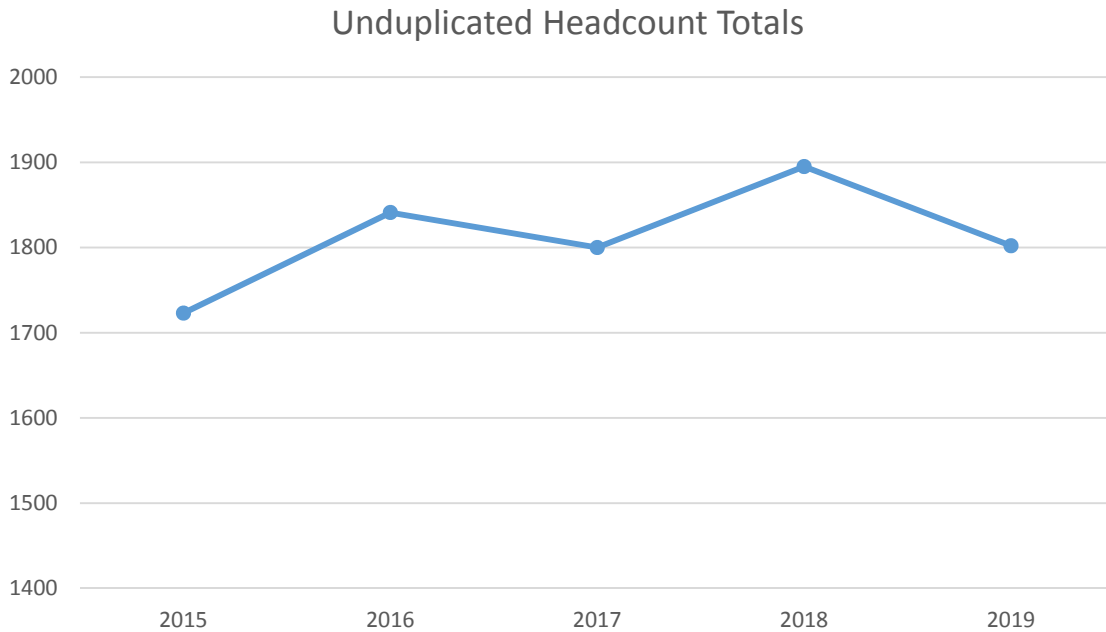
**PC Provides for PC Students at Remote Sites** – Panola College students are enrolled in Panola College courses offered via video conference. Remote sites may include Shelby Regional Training Center, Marshall College Center, area high schools, or sites chosen by the students.

### Interactive Television (ITV) Courses:

**PC Provides for PC Students at Remote Sites** – Panola College students are enrolled in ITV courses offered by Panola College. Only the students at remote sites are counted in this category--students seated in the originating classroom with the instructor are not included. Remote sites include Shelby Regional Training Center, Marshall College Center, and area high schools.

**PC Provides Hybrid/Flex for PC** – Students enrolled in ITV classes in terms shorter than sixteen weeks meet face-to-face or via ITV with the instructor with 51-84% of the instruction online.

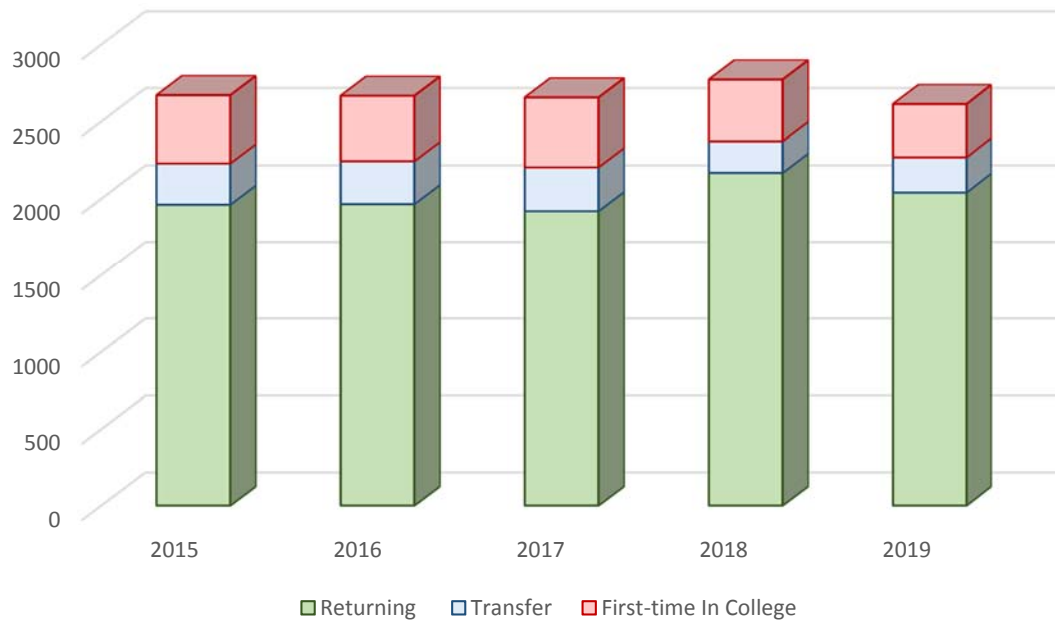
## Fall Distance Learning Enrollment Unduplicated Head Count



Headcount	2015	2016	2017	2018	2019
Unduplicated Internet Count	1,557	1,702	1,685	1,794	1,798
Unduplicated ITV Count	160	135	105	100	0
Virtual College (Internet-based)	6	4	10	1	4
<b>Unduplicated Total *</b>	<b>1,723</b>	<b>1,841</b>	<b>1,800</b>	<b>1,895</b>	<b>1,802</b>

\* Some students may be enrolled in both Internet and ITV classes and counted once for each of the individual categories. Therefore, a student who is counted in the unduplicated headcount for the Internet and for the ITV categories will be counted more than once in the Total category.

## Fall Student Distribution



Distribution	2015	2016	2017	2018	2019
Returning	1,961	1,965	1,919	2,168	2,040
Transfer	268	279	285	205	229
First-time in College	442	423	452	400	344
Total	2,671	2,667	2,656	2,773	2,613

First-time in College Fall 2019	Number
May 2019 Graduates	168
May 2019 Graduates with Prior Dual Enrollment or Early Admission	112
Previous High School Graduates	63
Individual Applications	0
GED Entrants	1
Total	344



Fall Contact Hours by Program Area: Academic and Career / Technical

<b>Academic (Funded)</b>	<b>2015</b>	<b>2016</b>	<b>2017</b>	<b>2018</b>	<b>2019</b>
AD Nursing (ACGM courses only)	---	---	8,896	6,272	6,848
Agriculture	6,720	3,840	6,816	4,032	4,128
Biology	62,640	66,688	66,896	47,760	52,224
Business Management, Marketing	7,776	7,584	7,440	8,064	9,216
Communications	432	768	288	672	0
Computer Sci./ Business Computer Apps	15,456	13,920	18,240	17,136	11,856
Consumer Home EC (Nutrition)	960	2,496	2,736	1,728	1,056
Consumer Home EC (Education)	4,064	4,288	4,096	4,480	2,624
Criminal Justice, Public Admin.	2,448	2,544	3,072	2,976	2,640
Foreign Language	6,336	5,760	8,976	5,232	3,312
Health	3,824	5,344	4,608	3,264	2,064
Letters	79,520	85,088	88,320	68,112	59,216
Mathematics	40,208	40,512	45,328	43,792	36,160
Physical Education and Fitness	30,864	32,272	29,408	23,184	23,568
Physical Science	12,016	16,944	13,520	14,528	14,784
Psychology	21,744	21,408	21,408	25,536	24,928
Social Science	41,808	46,848	46,800	51,600	50,928
Visual and Performing Art	34,480	39,056	40,208	35,904	32,256
<b>Total Funded Academic CH</b>	<b>371,296</b>	<b>395,360</b>	<b>417,056</b>	<b>364,272</b>	<b>337,808</b>

<b>Career / Technical (Funded)</b>	<b>2015</b>	<b>2016</b>	<b>2017</b>	<b>2018</b>	<b>2019</b>
Agriculture	---	---	704	1,088	1,024
Associate Degree Nursing	35,840	38,112	36,688	31,776	29,136
Biology	---	---	---	832	640
Business Mgmt., Admin (OST, Gen Bus)	10,464	15,936	14,496	13,392	14,256
Computer Info Technology	7,968	8,448	10,080	7,488	5,088
Consumer Home EC (Education)	1,584	1,008	2,144	0	0
Cosmetology (Cons & HEC)	21,216	25,792	21,120	24,544	20,320
Emergency Medical Tech	11,088	7,664	8,832	7,504	10,080
Foreign Language (ADN and OTA)	192	0	0	0	0
Health Information Technology	17,056	21,504	16,000	14,528	9,568
Industrial/Petroleum Technology	47,408	32,144	24,128	21,488	22,944
Medical Assisting	14,080	13,424	12,064	8,752	7,696
Medical Lab Technician	4,784	7,776	5,920	8,848	6,064
Nurse Aid CNA	4,032	4,368	6,944	2,912	3,360
Occupational Therapy	22,736	20,768	9,168	11,904	12,144
Social Science (PET)	--	--	1,280	800	1,120
Vocational Nursing	34,896	33,120	20,784	27,824	27,632
Welding	21,600	12,976	14,064	16,240	19,312
<b>Total Funded Career / Tech. CH</b>	<b>254,944</b>	<b>272,144</b>	<b>204,416</b>	<b>199,920</b>	<b>190,384</b>
<b>Total Funded<sup>45</sup> Academic and Career / Technical CH</b>	<b>626,240</b>	<b>667,504</b>	<b>621,472</b>	<b>564,192</b>	<b>528,192</b>

<sup>45</sup> Some contact hours are not funded by the state due to repeated courses.

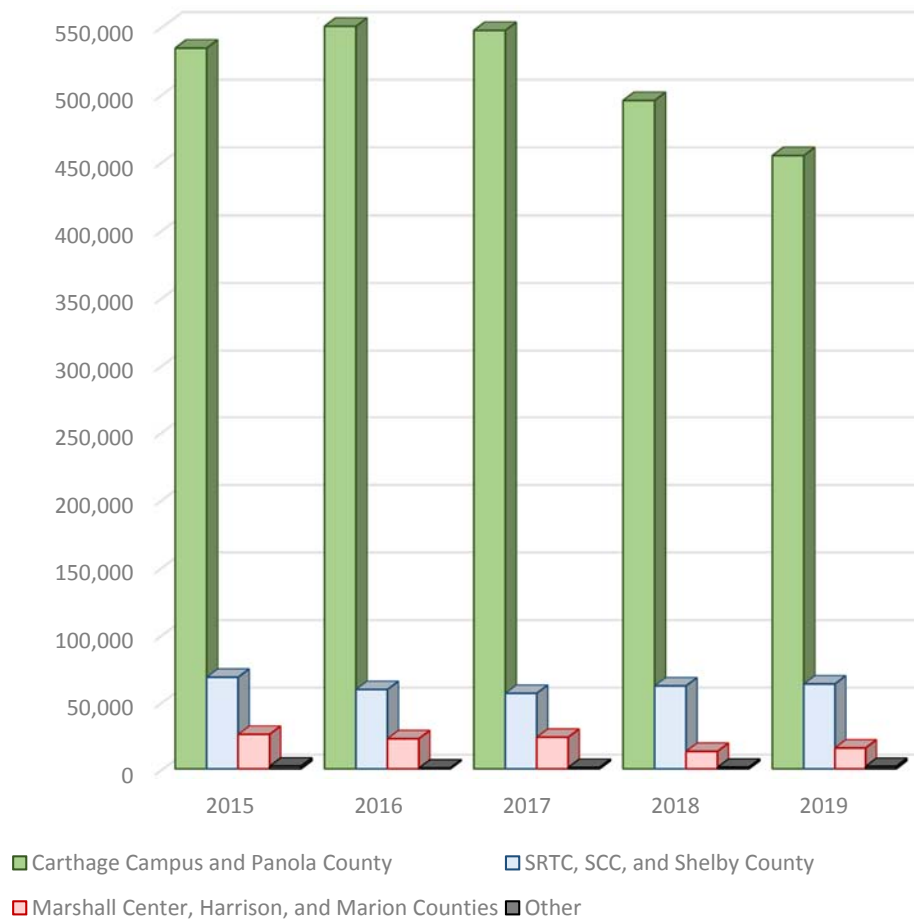
Spring Contact Hours by Program Area: Academic and Career / Technical

<b>Academic (Funded)</b>	<b>2016</b>	<b>2017</b>	<b>2018</b>	<b>2019</b>	<b>2020</b>
AD Nursing (ACGM courses only)	4,544	5,632	6,848	5,568	4,864
Agriculture	2,976	2,304	3,696	3,024	4,416
Biology	54,816	63,488	56,064	38,880	39,072
Business Management, Marketing	2,112	3,168	1,872	2,688	2,784
Communications	288	672	288	336	0
Computer Sci./ Business Computer Apps	12,000	11,424	13,200	13,008	10,560
Consumer Home EC (Nutrition)	1,968	3,744	2,064	1,392	1,392
Consumer Home EC (Education)	5,296	3,888	4,224	4,416	3,184
Criminal Justice, Public Admin.	4,368	4,224	4,656	4,512	4,464
Foreign Language	4,992	5,184	5,952	3,696	1,344
Health	7,776	6,768	5,664	3,984	3,360
Letters	56,512	71,184	71,200	59,520	52,160
Mathematics	32,960	35,584	34,394	28,544	25,568
Physical Education and Fitness	27,664	30,416	26,640	23,456	21,888
Physical Science	6,768	16,384	16,192	14,448	10,000
Psychology and Sociology	22,656	22,368	19,488	17,712	21,872
Social Science	40,752	45,840	47,760	53,072	44,928
Visual and Performing Art	34,896	42,000	35,824	36,288	30,416
<b>Total Funded Academic CH</b>	<b>323,344</b>	<b>374,272</b>	<b>356,026</b>	<b>314,544</b>	<b>282,272</b>

<b>Career / Technical (Funded)</b>	<b>2016</b>	<b>2017</b>	<b>2018</b>	<b>2019</b>	<b>2020</b>
Agriculture (PET/RLM)	---	---	4,752	4,576	6,912
Associate Degree Nursing	42,816	38,816	35,088	29,632	26,544
Business Management/Admin (CIT)	4,512	1,056	1,440	1,152	0
Business (Office Professional/OST)	10,272	17,808	15,840	15,984	16,176
Computer Info Systems	3,552	4,512	4,512	2,592	2,688
Cosmetology (Cons & HEC)	20,672	25,856	24,896	23,424	20,704
Education (Cons & HEC)	1,296	1,728	1,376	0	0
Emergency Medical Tech	4,864	8,848	5,568	7,568	6,720
Foreign Language (ADN, OTA)	304	0	0	0	0
Health Information Technology	15,424	14,320	13,472	9,200	5,936
Industrial / Petroleum Technology	43,024	30,720	17,968	20,128	24,272
Medical Assistant	17,344	13,216	12,960	8,432	8,528
Medical Lab Technician	6,528	5,952	7,888	7,824	5,680
Nurse Aid CNA	4,144	6,496	5,040	6,384	3,584
Occupational Therapy	11,904	11,280	14,448	12,432	12,672
Vocational Nursing	27,952	22,096	26,656	28,672	28,784
Welding	14,768	10,224	11,072	14,576	16,304
<b>Total Funded Career / Tech. CH</b>	<b>229,376</b>	<b>212,928</b>	<b>202,976</b>	<b>192,576</b>	<b>185,504</b>
<b>Total Funded<sup>46</sup> Academic and Career / Technical CH</b>	<b>552,720</b>	<b>587,200</b>	<b>559,002</b>	<b>507,120</b>	<b>467,776</b>

<sup>46</sup> Some contact hours are not funded by the state due to repeated courses.

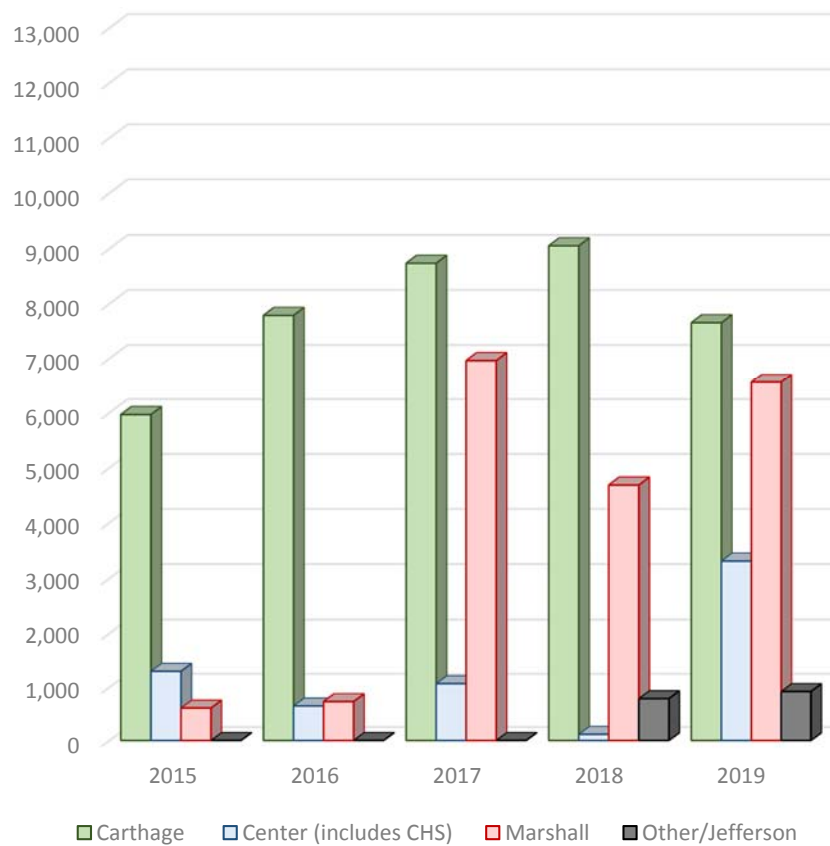
### Fall Contact Hours by Campus: Academic and Career / Technical



Academic & Career / Technical	2015	2016	2017	2018	2019
Carthage Campus	521,808	561,936	538,560	485,024	442,384
Panola County High Schools	12,048	5,680	8,352	10,080	11,952
Marshall Center	24,032	19,680	20,976	11,168	12,256
Harrison County High Schools	192	1,232	1,968	1,008	1,408
Jefferson High School	1,440	1,488	544	768	1,808
SCC and SRTC	61,056	50,176	46,528	53,632	53,344
Shelby County High Schools	7,200	8,928	9,696	8,176	9,904
Garrison High School	1,920	528	960	1,104	1,632
Non-funded * (three-peats and other non-reported or audits)	(7,296)	(7,984)	(6,112)	(6,832)	(6,688)
<b>Total Off-Campus</b>	<b>107,888</b>	<b>87,712</b>	<b>89,024</b>	<b>85,936</b>	<b>92,400</b>
<b>Total Semester Length CH (Includes Non-funded) <sup>47</sup></b>	<b>629,696</b>	<b>649,648</b>	<b>627,584</b>	<b>571,024</b>	<b>534,880</b>

<sup>47</sup> Non-funded CHs have been counted in their respective categories so they are included in the total.

## Continuing Education: Fall Contact Hours by Campus

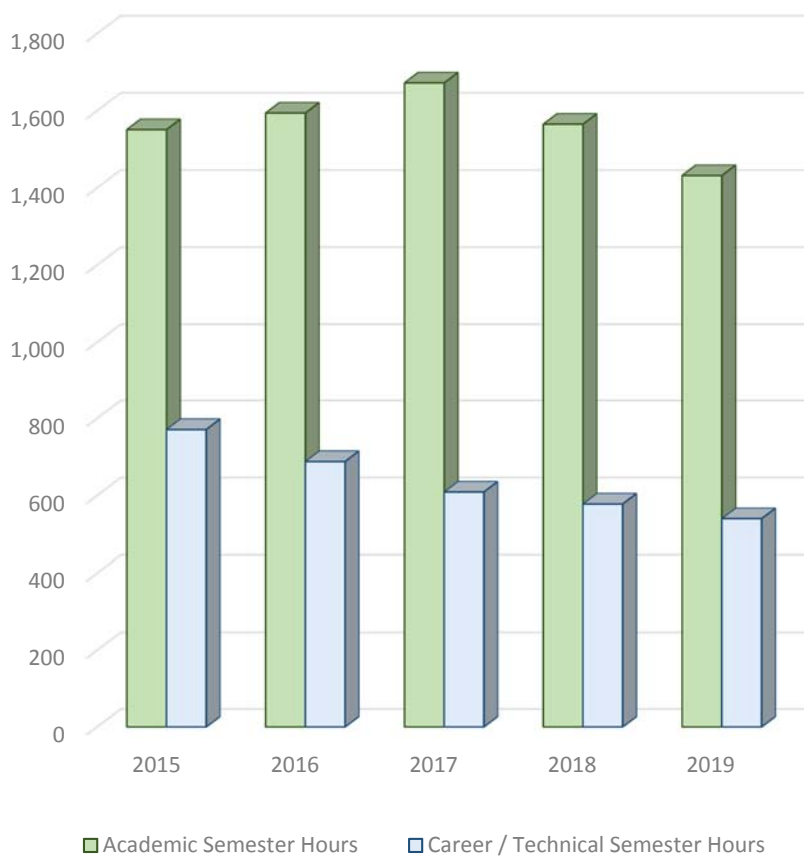


Continuing Education	2015	2016	2017	2018	2019
Carthage	5,965	7,785	8,732	9,050	7,652
Center (includes CHS)	1,296	646	1,064	115	3,300
Marshall	607	728	6,962	4,683	6,559
Other/Jefferson	0	0	0	784	917
<b>Total Continuing Education</b>	<b>7,868</b>	<b>9,159</b>	<b>16,758</b>	<b>14,632</b>	<b>18,428</b>

Fall Contact Hour Summary	2015	2016	2017	2018	2019
Total Semester Length	622,400	641,664	627,584	571,024	534,880
Total Continuing Education	7,868	9,159	16,758	14,632	18,428
Total Unfunded (3-peats and other non-funded)	(7,296)	(7,984)	(6,112)	(6,832)	(6,688)
<b>Total Funded <sup>48</sup></b>	<b>630,268</b>	<b>650,823</b>	<b>638,230</b>	<b>578,824</b>	<b>546,620</b>

<sup>48</sup> Some contact hours are not funded by the state due to repeated courses. The non-funded hours have been included in the totals for contact hours.

Fall Credit Academic / Career Technical  
Full-Time Equivalent (FTE)



Full Time Equivalent	2015	2016	2017	2018	2019
Academic FTE	1,551	1,594	1,672	1,565	1,432
Career / Technical FTE	771	688	609	578	540
Non-funded <sup>49</sup> and Non-reported FTE	25	24	19	24	19
<b>Total FTE</b>	<b>2,306</b>	<b>2,305</b>	<b>2,300</b>	<b>2,167</b>	<b>1,991</b>

<sup>49</sup> Some semester hours are not funded by the state due to repeated courses.

### Academic Degree Programs

Associate of Arts  
Associate of Arts - Teaching  
Associate of Science

### Technical Degree Programs

#### Associate of Applied Science

Computer Information Technology  
Construction Technology  
Electrical and Instrumentation  
General Business  
Health Information  
Technology/Technician  
Medical Assisting  
Clinical/Medical Laboratory Technician  
Natural Gas Compression  
Nursing (Leading to RN Licensure)  
Nursing (LVN-RN Transition)  
Occupational Therapy Assistant  
Office Professional  
Office Professional (Medical Option)  
Petroleum Technology  
Ranch & Land Management  
Welding Technology

### Technical Certificate Programs (Certificate of Proficiency)

Computer Information Technology  
Digital Media Design and Development  
Microcomputer Software Operator  
Microcomputer Support Specialist  
Personal Computer Technical Support

Construction Technology I and II

Cosmetology  
Instructor Training  
Nail Technology  
Operator

Emergency Medical Technology

General Business

Health Information Technology  
Medical Coding Technician

Heating, Ventilation, & Air Conditioning

Licensed Vocational Nurse

Maintenance Technician I and II

Medical Assisting

Natural Gas Compression I and II

Office Professional  
Administrative Assistant  
General Office  
Marketable Skills

Petroleum Technology I and II

Ranch & Land Management I and II

Residential / Commercial Electrician

Welding - Basic and Intermediate Level

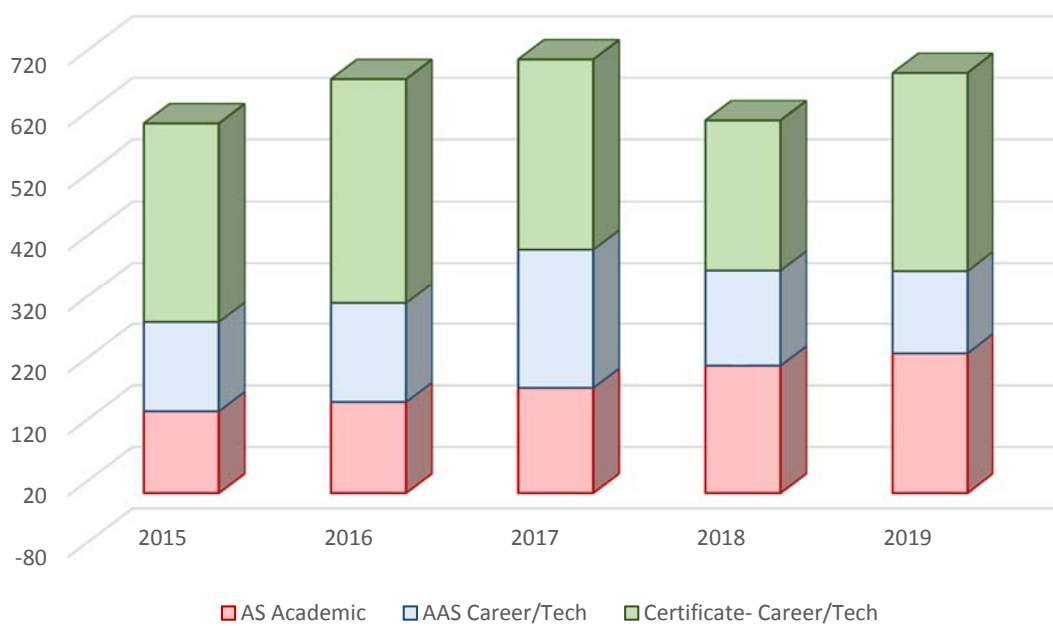
## Fall 2019 Enrollment by Declared Major Field of Study

Curriculum	Total
A D Nursing	107
Administrative Assistant	9
Agriculture, General	35
Architecture	23
Art, General	24
Basic Welding	55
Biology, General	33
Business and Management	152
Chemistry, General	10
Clinical/Medical Assistant	22
Clinical/Medical Assistant Certificate	39
Clinical/Medical Laboratory Technician	22
Computer Information Technology	36
Computer Science	21
Construction Technology	2
Construction Technology I	2
Cosmetology	42
Criminology	64
Digital Media Design and Development	9
Drama / Theater Arts	18
Education, General	6
Electrical and Instrumentation Technology	24
Electrical Specialist	2
Emergency Medical Technician	26
English Language and Literature	25
Foreign Languages & Literatures	1
Forestry Sciences	5
General Business	64
General Business (1 year certificate)	35
General Office	3
General Studies	518
Health Information Technology	21
Health Professions / Related	207
Heating, Ventilation, & Air Conditioning	13
History, General	8
Intermediate Welding	2
Journalism / Communications	4



Curriculum	Total
Liberal Arts / Sciences	4
Mathematics	22
Medical Coding	20
Microcomputer Software Operator	2
Microcomputer Support Specialist	7
Music, General	17
Natural Gas Compression	4
Natural Gas Compression I	1
Occupational Therapy Assisting	116
Office Professional	10
Office Professional Medical Option	6
Personal Computer Technical Support	1
Petroleum Technology	41
Petroleum Technology I	13
Physical Ed. - Teaching and Coach	31
Physics, General	6
Political Science and Government, General	2
Pre-AD Nursing	202
Pre-Dentistry Studies	17
Pre-Law Studies	16
Pre-Medicine Studies	1
Pre-Pharmacy Studies	3
Pre-Veterinary Studies	32
Pre-Vocational Nursing	84
Psychology, General	48
Ranch & Land Management	17
Ranch & Land Management I	6
Residential/Commercial Electrician	7
Sociology	12
Speech and Rhetorical Studies	8
Teaching – EC-6, 4-8, EC-12, Special Education	91
Vocational Nursing	57
Welding Helper	1
Welding Technology	19
<b>Total</b>	<b>2,613</b>

## Total Number of Degrees and Certificates Awarded

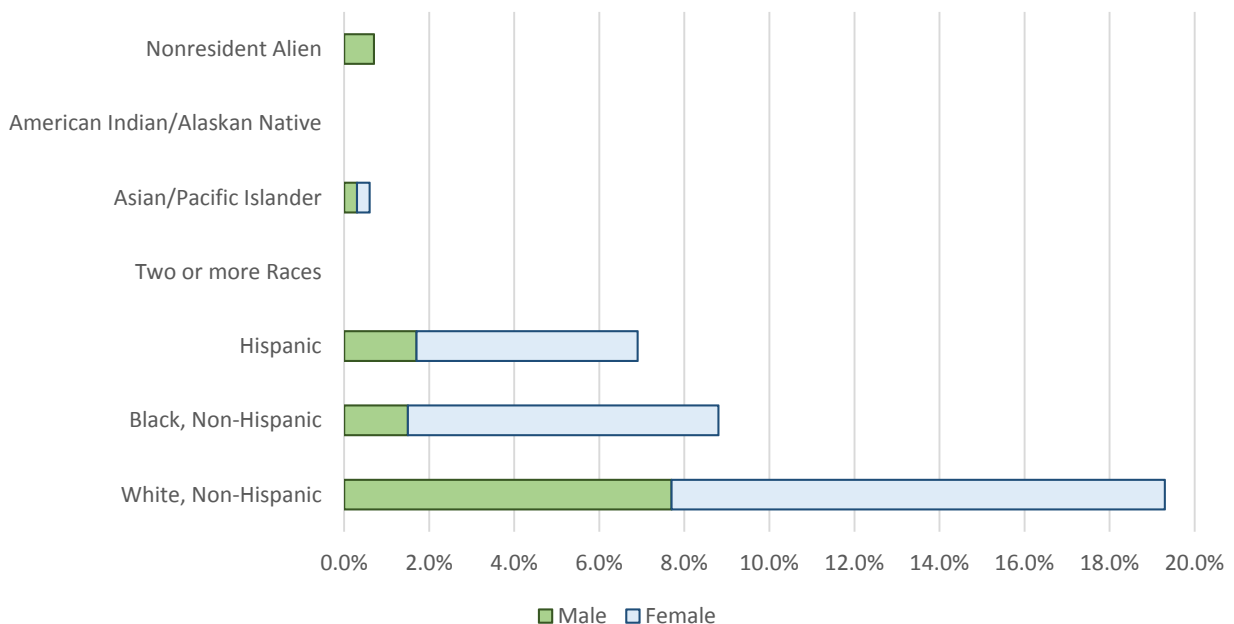


Degree/Certificate	2015	2016	2017	2018	2019
Associate Degree Academic	133	148	171	207	227
Associate Degree Career Tech	145	161	226	156	135
Certificate Career Technical	323	364	308	243	321
<b>Total Degrees and Certificates</b>	<b>601</b>	<b>673</b>	<b>705</b>	<b>606</b>	<b>683</b>
Core Completers	109	131	145	184	216
Field of Study Completers	8	6	9	28	15
<b>Total Completers</b>	<b>718</b>	<b>810</b>	<b>859</b>	<b>818</b>	<b>914</b>

Percent of First-time in College, Full-time Students Who Entered in Fall 2016 (Cohort 2016) and Completed a Degree, a Certificate, or Transferred-out by Fall 2019

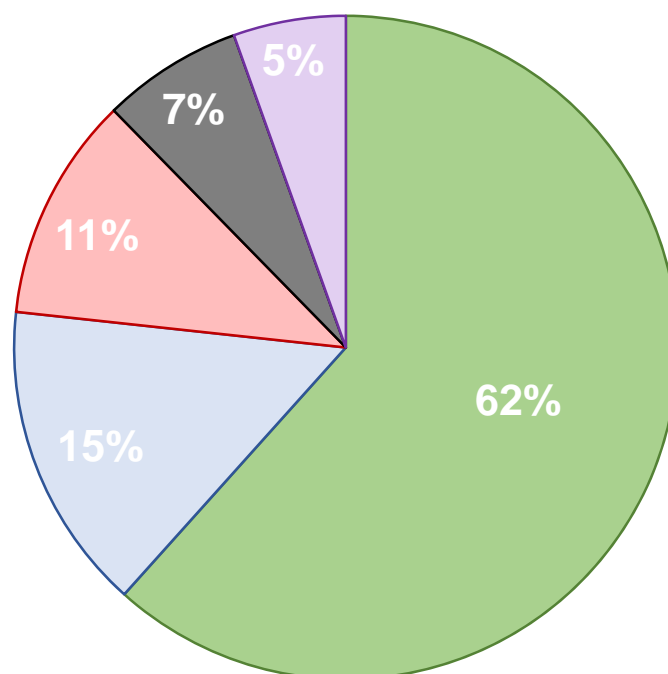
Ethnic Group	Men	Women	Total %	Transfer-out
% of Ethnic Group	% of Group Completing by 2019	% of Group Completing by 2019	% of Group Completing by 2019	% Who Transfer to Another <b>Texas</b> Institution by 2019
White, Non-Hispanic	7.7%	11.6%	19.3%	10.1%
Black, Non-Hispanic	1.5%	7.3%	3.7%	1.7%
Hispanic	1.7%	5.2%	6.9%	2.2%
Asian/Pacific Islander	0.3%	0.3%	0.5%	0%
American Indian/ Alaskan Native	N/A	0%	0%	0%
Non-resident Alien	0.7%	0%	2.5%	0.3%
Two or more races	0%	0%	0%	0.3%
<b>Total % Completing or Transferring-out</b>	<b>11.9%</b>	<b>21.0%</b>	<b>30.4%</b>	<b>14.6%</b>

Percentage of Ethnic Group for the Fall 2016 Cohort Who Completed a Degree or Certificate by Fall 2019



\* Completers include students who earn a one or two year certificate and students earning an Associate's degree. Core completers are not included in this data. (Source: IPEDS Graduation Rates)

Percent and Number of Full-time Faculty  
by Degree and Gender (Fall 2019)

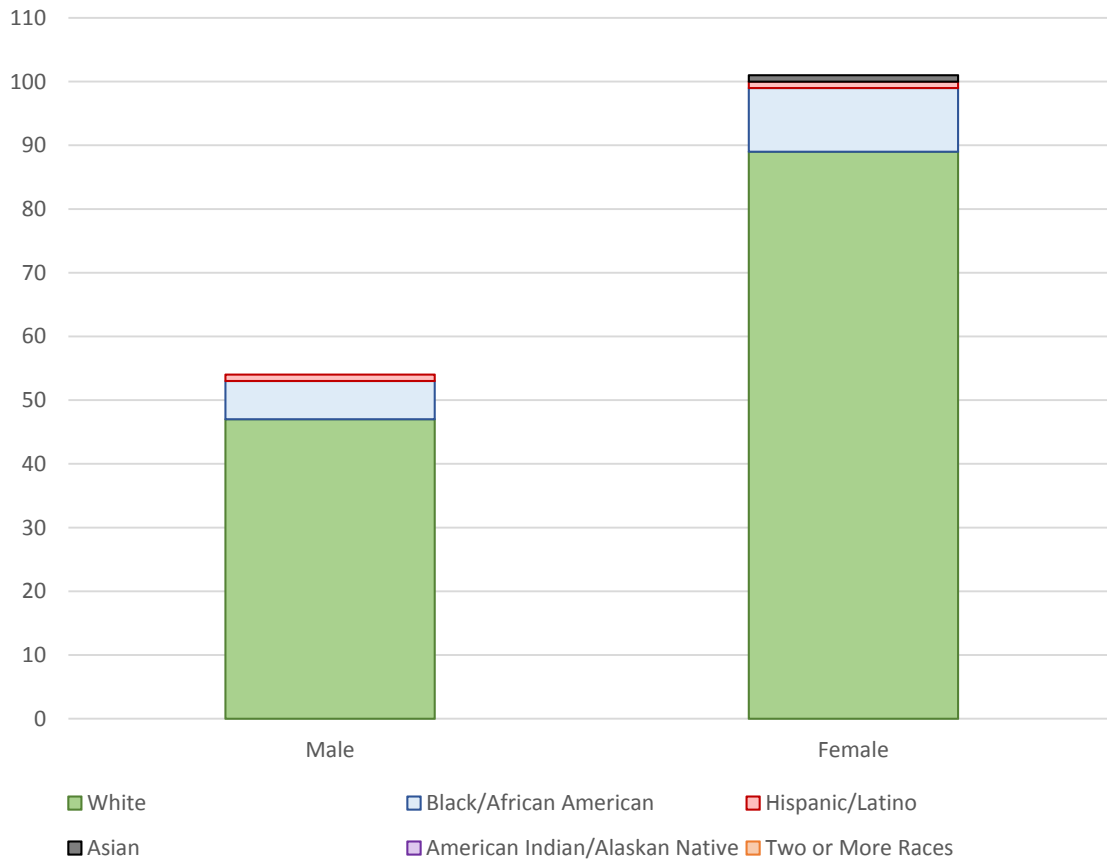


■ Master's	■ Less than Bachelor's	■ Bachelor's
■ Doctorate	■ Master's with 30+ Hours	

Number of Full Time Faculty by Degree and Gender

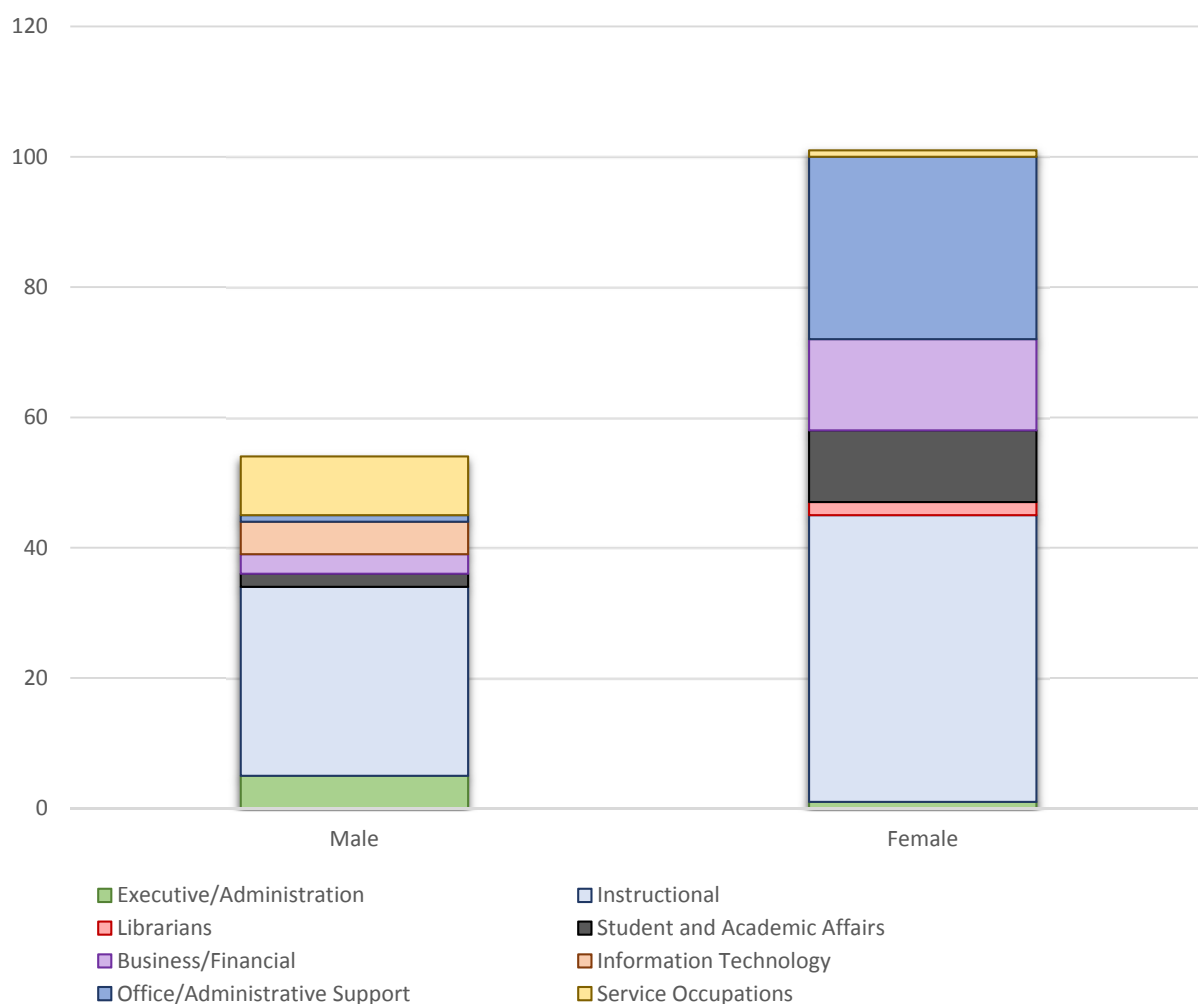
Degree	Male	Female	Total
Doctorate	2	3	5
Master's with 30+ Hours	3	1	4
Master's	18	27	45
Bachelor's	1	7	8
Less than Bachelor's	6	5	11
Total Number	30	43	73

## Full-time Employees by Ethnicity and Gender (Fall 2019)



Ethnic Group	Male	Female	Total
White	47	89	136
Black or African American	6	10	16
Hispanic or Latino	1	1	2
Asian	0	1	1
American Indian/Alaskan Native	0	0	0
Two or More Races	0	0	0
<b>Total Number</b>	<b>54</b>	<b>101</b>	<b>155</b>

## Full-time Employees by Activity and Gender (Fall 2019)



Activity	Male	Female	Total
Executive/Administration	5	1	6
Instructional	29	44	73
Librarians	0	2	2
Student and Academic Affairs and Other Education Services	2	11	13
Business and Financial Operations	3	14	17
Information Technology	5	0	5
Office and Administrative Support	1	28	29
Service Occupations	9	1	10
<b>Total Number</b>	<b>54</b>	<b>101</b>	<b>155</b>



Revenues, Expenses, and Changes in Net Assets  
September 1, 2018 – August 31, 2019

<b>Operating Revenues</b>	<b>2018-2019</b>	<b>2017-2018</b>
Tuition and Fees	3,729,342	3,827,729
Federal Grants and Contracts	714,123	579,903
State Grants and Contracts	504,884	657,914
Non-Government Grants and Contracts	3,224	1,741
Sales & Service of Educational Activities	55,718	73,175
Auxiliary Enterprises	1,257,043	1,095,665
Other Operating Revenues	316,600	365,910
<b>Total Operating Revenues</b>	<b>6,645,934</b>	<b>6,602,037</b>

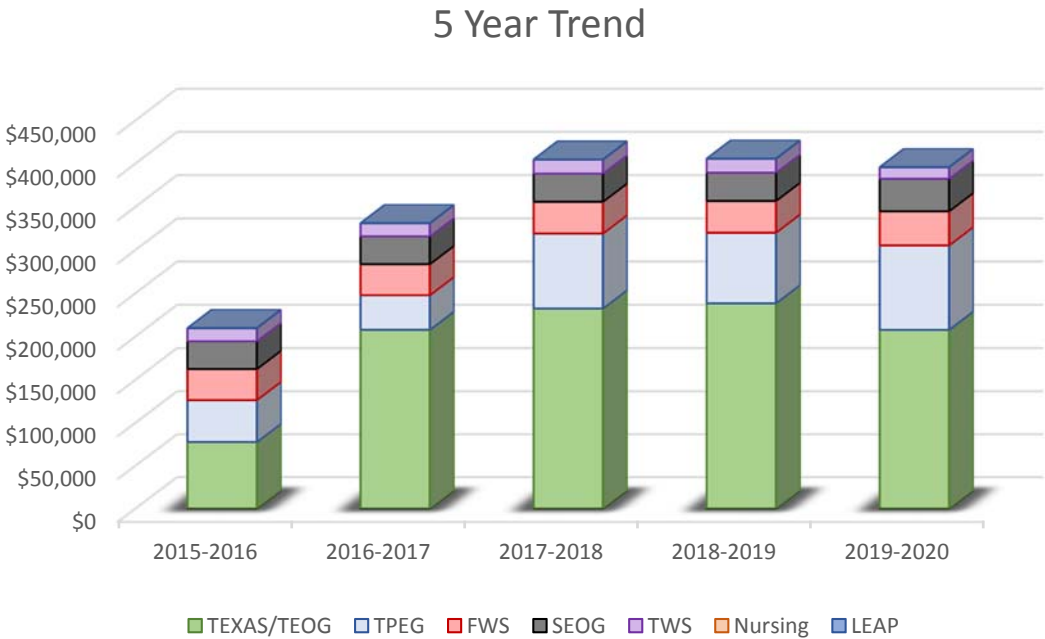
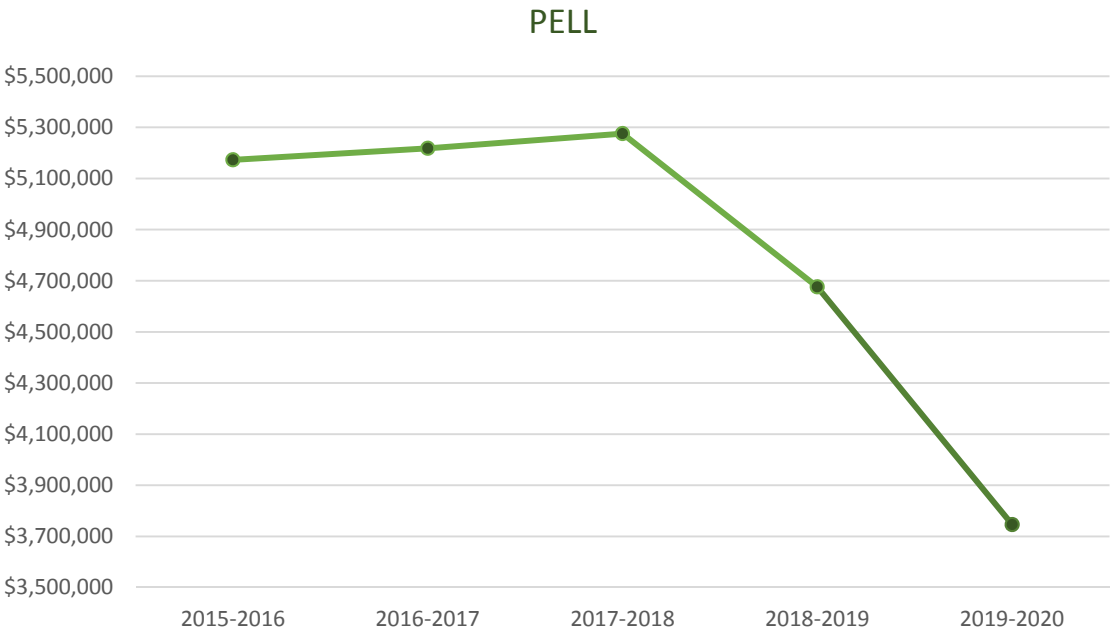
<b>Operating Expenses</b>		
Instruction	8,907,094	8,883,638
Public Service	418,918	364,620
Academic Support	3,035,487	2,879,980
Student Services	1,650,529	1,597,438
Institutional Support	2,947,746	2,759,771
Operation and Maintenance of Plant	1,692,612	1,794,334
Scholarships and Fellowships	3,242,304	4,291,788
Auxiliary Enterprises	2,487,518	2,578,637
Depreciation	2,347,281	2,276,731
<b>Total Operating Expenses</b>	<b>26,729,489</b>	<b>27,426,937</b>
<b>Operating Income Loss</b>	<b>20,083,555</b>	<b>20,824,900</b>

<b>Non-Operating Revenues</b>		
State Appropriations – General Revenue	6,096,469	6,512,379
Ad-valorem Taxes for Current Operation	6,826,243	6,490,785
Ad-valorem Taxes for Debt Service	2,145,694	2,110,786
Federal Revenue, Non-Operating	6,989,236	8,932,617
Gifts	279,809	1,187,111
Investment Income (net of investment expenses)	683,853	533,051
Loss of Disposition of Capital Assets	0	(309,382)
Royalty Income	196,136	292,510
Interest on Capital Related Debt	(931,330)	963,218
<b>Net Non-Operating Revenues</b>	<b>22,286,110</b>	<b>24,786,639</b>
<b>Income Before Other Revenues</b>	<b>2,202,555</b>	<b>3,961,739</b>

<b>Other Revenues</b>		
Additions to Permanent Endowments	158,164	330,436
Total Other Revenues	158,164	330,436
Increase in Net Position	2,360,719	4,292,175

<b>Net Position</b>		
Net Position – Beginning of Year	32,967,924	41,496,585
Cumulative Effect of Change in Accounting Principle		12,820,836
Net Position- Beginning of Year as Restated	32,967,924	28,675,749
Net Position- End of Year	35,328,643	32,967,924

Need-Based Aid Received by Students p. 1

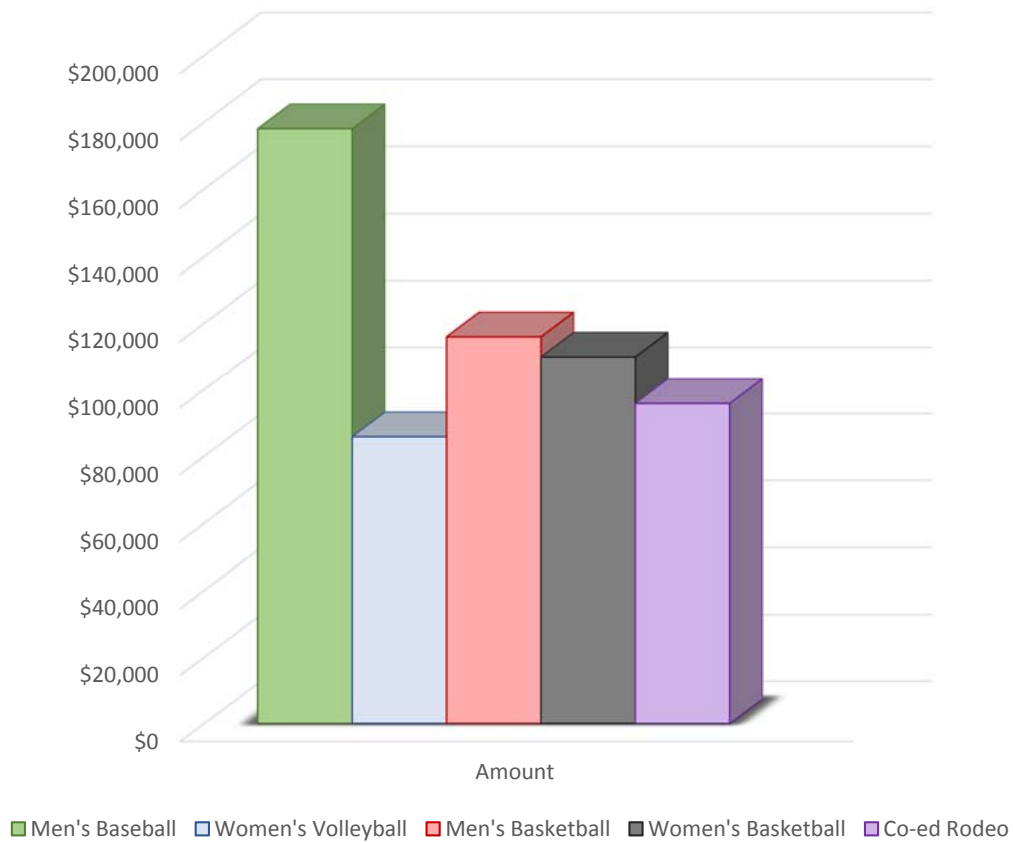


## Need-Based Aid Received by Students p. 2

Program	2015-2016	2016-2017	2017-2018	2018-2019	2019-2020
PELL	5,172,800	5,218,285	5,275,867	4,676,077	3,746,287
SEOG	32,126	32,126	32,626	32,626	37,583
TPEG	48,704	40,000	86,709	81,697	97,658
LEAP	0	0	0	0	0
FWS	35,984	35,984	36,748	36,748	39,466
TEXAS/TEOG	77,511	207,573	232,220	238,222	207,541
Nursing	0	0	0	0	0
TWS	15,134	15,134	16,152	16,150	13,382
<b>TOTAL</b>	<b>5,382,259</b>	<b>5,549,102</b>	<b>5,680,322</b>	<b>5,081,520</b>	<b>4,141,917</b>

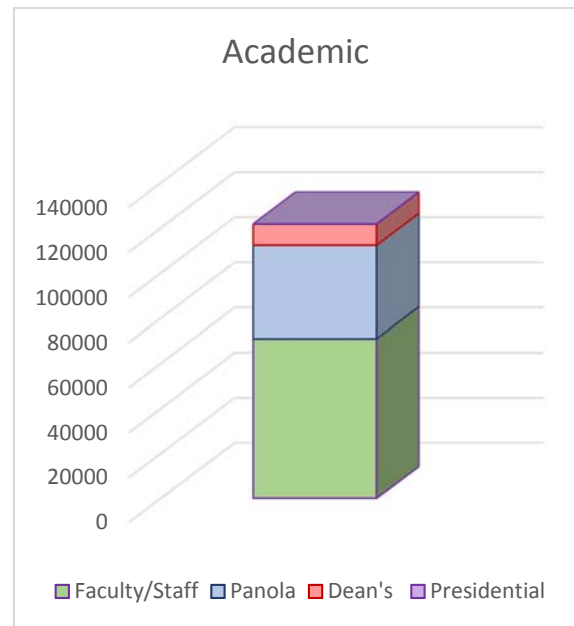
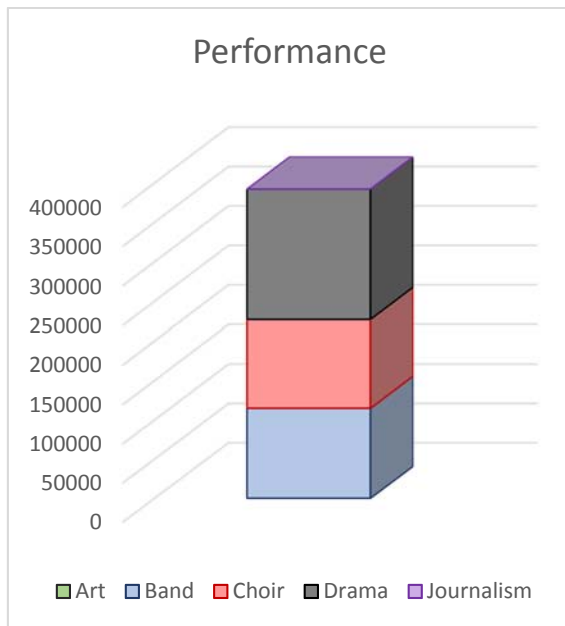
GRANT	Description
PELL SEOG LEAP TEXAS/TEOG TPEG	PELL Supplemental Educational Opportunity Grant Leveraging Educational Assistance Partnership (formerly SSIG) Toward Excellence, Access, and Success / Texas Educational Opportunity Grant Texas Public Educational Grant
Work Study	Description
FWS TWS	Federal Work Study Texas Work Study

## Athletic Scholarships 2019 – 2020



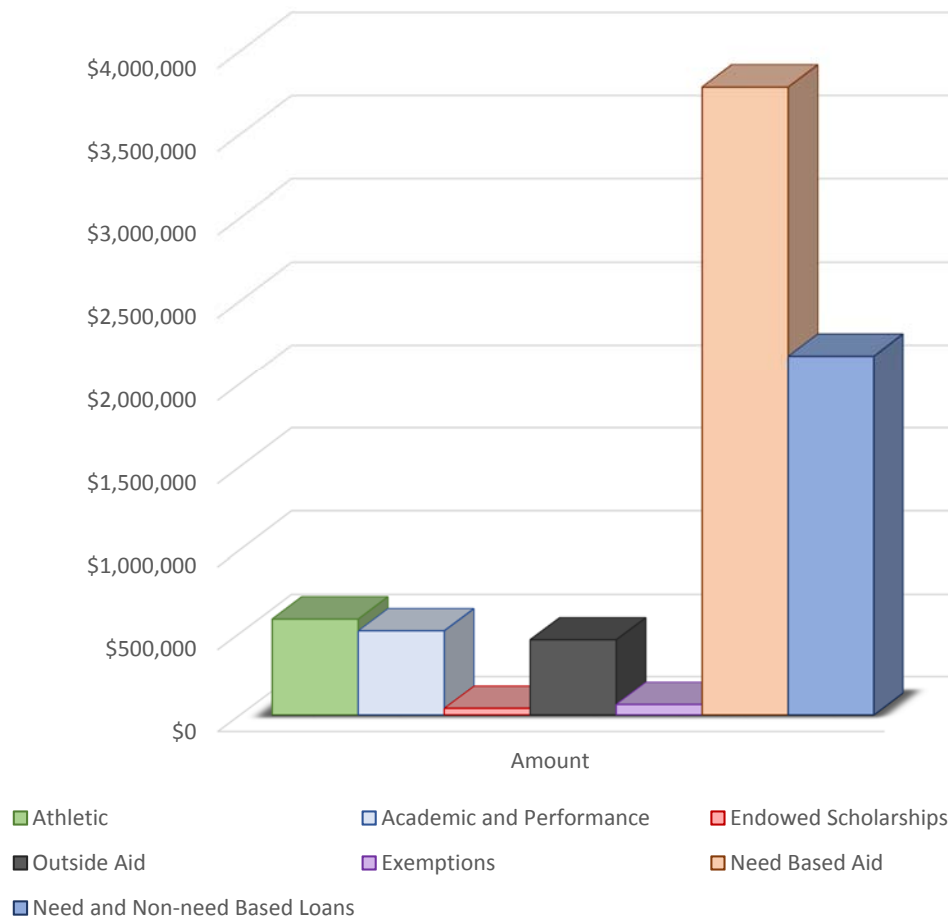
Program	Amount	% Difference from Previous Year
Men's Baseball	\$177,965	-6.5%
Women's Volleyball	\$85,763	-23.4%
Men's Basketball	\$115,902	-11.2%
Women's Basketball	\$109,888	-9.8%
Rodeo	\$95,744	-7.6%
<b>TOTAL</b>	<b>\$585,262</b>	<b>-11.1%</b>

## Academic/Performance Scholarships 2019 – 2020



Program	Amount	% Difference from Previous Year
Performance:		
Art	\$0	-100%
Band	\$114,801	-13.5%
Choir	\$112,133	0.1%
Drama	\$165,055	14.3%
Journalism	\$0	-100%
<b>Total Performance</b>	<b>\$391,989</b>	<b>-0.8%</b>
Faculty/Staff	\$70,932	-35.3%
Panola	\$41,419	29.0%
Dean's	\$9,364	-25.6%
Presidential	\$0	-100%
<b>Total Academic</b>	<b>\$121,715</b>	<b>-21.1%</b>
<b>TOTAL</b>	<b>\$513,704</b>	<b>-6.5%</b>

## Summary of Financial Aid/ Scholarships 2019 – 2020

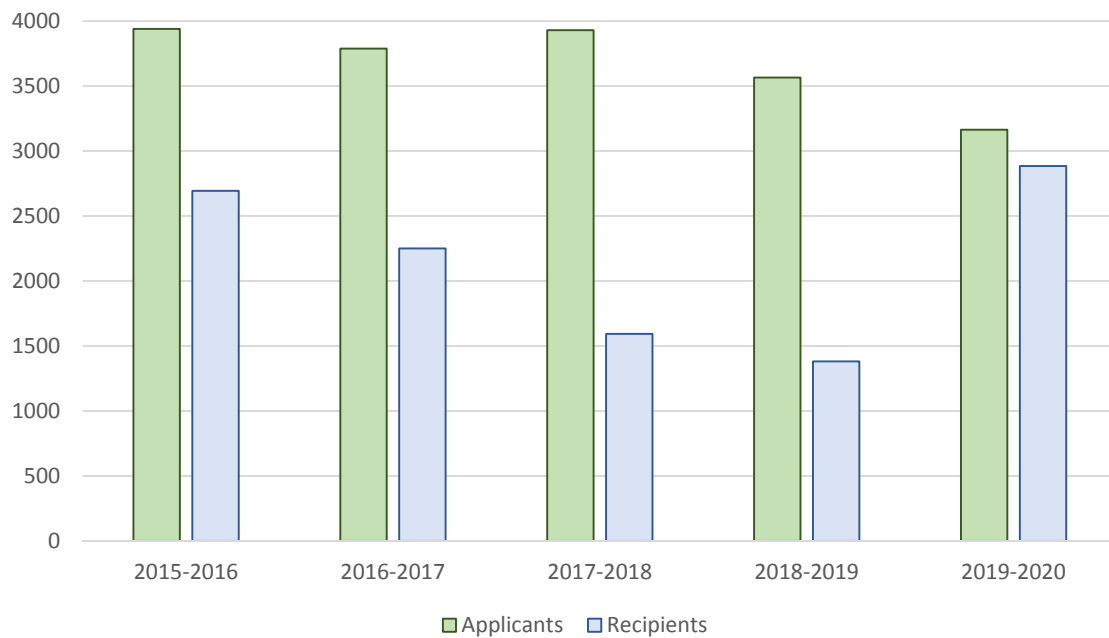


Program	Amount	% Difference from Previous Year
Athletic	\$585,263	-11.1%
Academic and Performance	\$513,705	30.0%
Endowed Scholarships	\$40,425	-33.7%
Outside Aid <sup>50</sup>	\$458,961	3.6%
Exemptions <sup>51</sup>	\$64,341	-97.1%
Need Based Aid	3,783,870	-24.6%
Need and Non-need Based Loans	\$2,167,705	-16.7%
<b>TOTAL</b>	<b>\$7,614,270</b>	<b>-18.4%</b>

<sup>50</sup> Any scholarship or grant not awarded by Panola College.

<sup>51</sup> Exemptions are offered by the state for students in special populations.

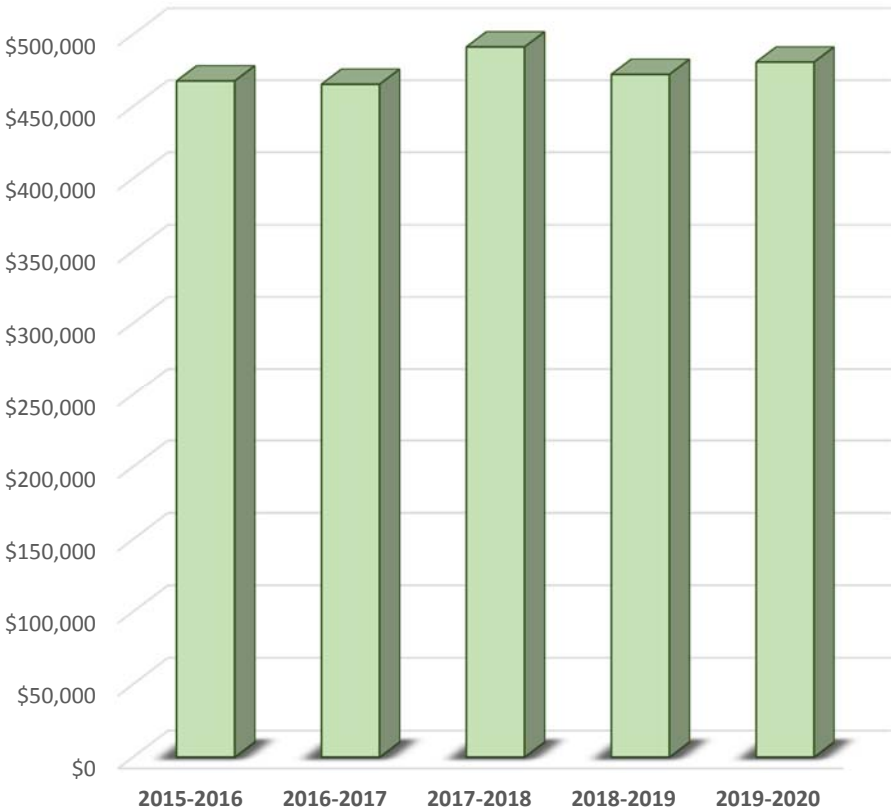
## Number of Financial Aid Applicants and Recipients of Federal or State Aid



	2015-2016	2016-2017	2017-2018	2018-2019	2019-2020
Applicants	3,940	3,788	3,930	3,566	3,164
Recipients	2,694	2,251	1,593	1,381	2,885
Applicants Receiving Aid	68%	59%	41%	39%	91%

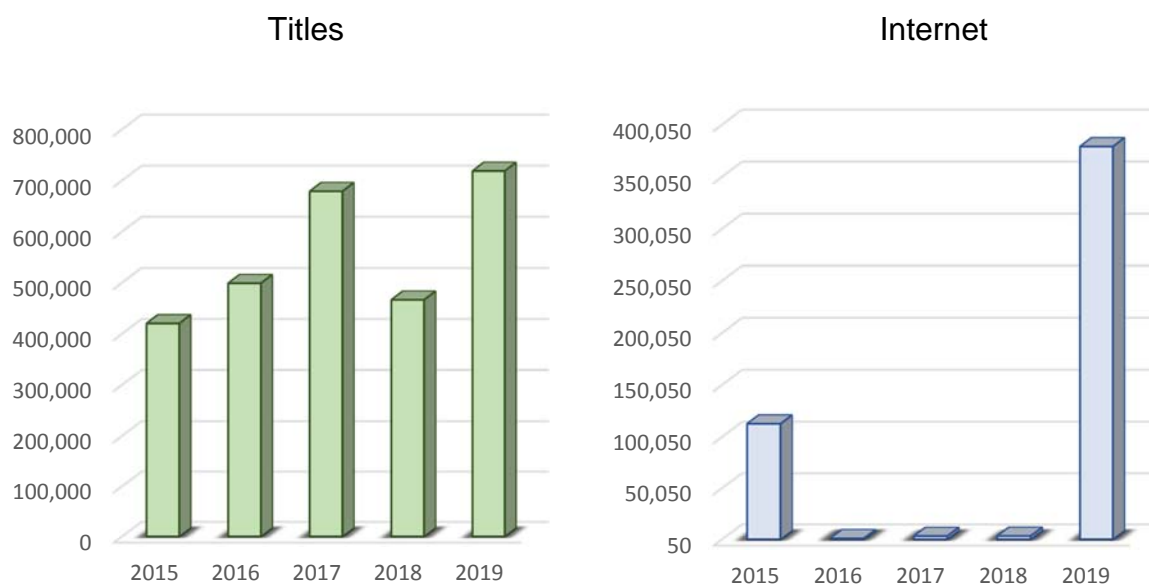


Library Budget: 2015-2019



Year	2015-2016	2016-2017	2017-2018	2018-2019	2019-2020
Budget	\$467,633	\$465,320	\$491,232	\$472,231	\$480,726

## Library Materials: 2015 – 2019

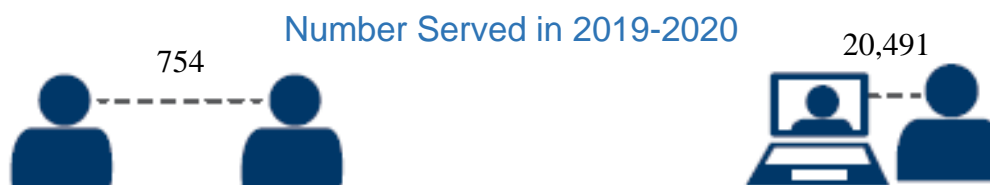


	2015	2016	2017	2018	2019
<b>Internet</b> <sup>52</sup>	112,639	945	3,165	3,260	379,045
<b>Titles</b> <sup>53</sup>	420,141	498,792	678,864	466,424	718,452

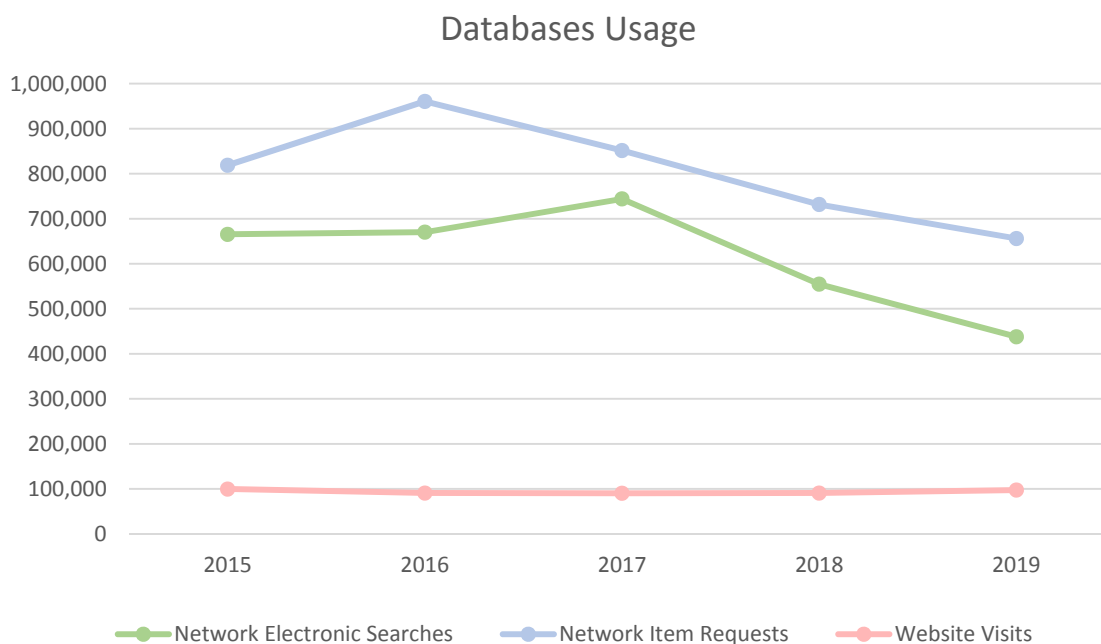
<sup>52</sup> Internet resources included individual database titles, individual streaming media titles, and individual titles preserved by the Portal to Texas History.

<sup>53</sup> Titles includes the number of individual print and eBook titles but not print volume count.

## Library Services: 2015 – 2019



Databases Usage	2015	2016	2017	2018	2019
Network Electronic Searches	665,268	670,049	743,930	554,597	437,890
Network Item Requests	818,790	960,569	851,586	731,635	656,074
Website Visits (Virtual Visits)	99,581	90,666	90,141	90,665	97,216
<b>Circulation Transactions</b>					
General Collection	5,565	3,376	2,499	1,727	2,148
Reserve Collection	4,196	2,080	1,063	751	958
<b>Interlibrary Loans</b>					
Lending	163	200	115	88	40
Borrowing	125	107	88	88	43
<b>Information Services to Groups</b>					
Presentations	72	49	37	20	20
People Served	10,646	12,468	12,547	20,785	21,245



\*Beginning in spring 2015 information literacy classes (presentations) were taught as a class instead of on demand for individual instructors. In spring 2016 information literacy was taught entirely online through Canvas. Tours, online reference services, and face-to-face reference services are still provided on demand and calculated in total people served.